

## B61J

**SHIFTING OR SHUNTING OF RAIL VEHICLES (shifting vehicles in general B60S; marshalling systems B61B)**

### Definition statement

*This subclass/group covers:*

Devices and methods for moving a railway vehicle intra-yards.

### References relevant to classification in this group

*This subclass/group does not cover:*

Marshalling systems	<a href="#">B61B 1/00</a>
---------------------	---------------------------

### Informative references

*Attention is drawn to the following places, which may be of interest for search:*

Shifting vehicles in general	<a href="#">B60S</a>
------------------------------	----------------------

## B61J 1/00

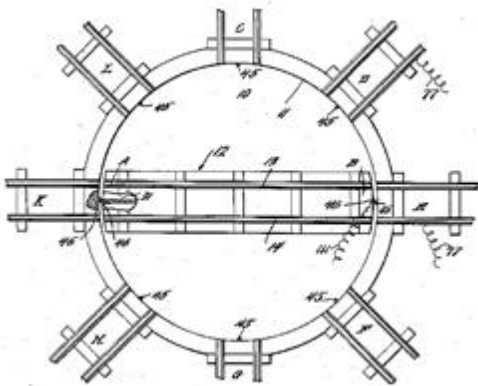
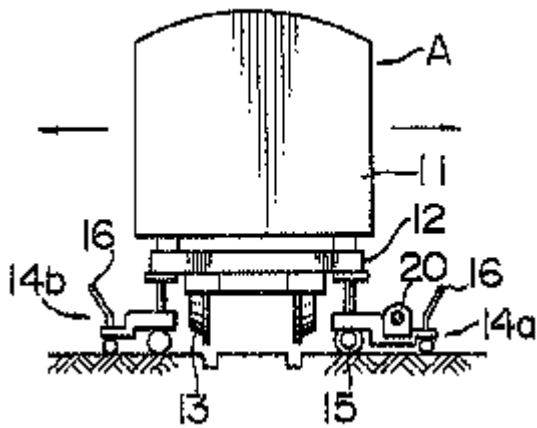
**Turntables; Traversers; Transporting rail vehicles on other rail vehicles or dollies (shunting B61J3/00)**

### Definition statement

*This subclass/group covers:*

The titles of this group are self-explanatory and do not need to be more specified.

Following drawings show two examples:



**References relevant to classification in this group**

*This subclass/group does not cover:*

Shunting	<a href="#">B61J 3/00</a>
----------	---------------------------

**B61J 3/00**

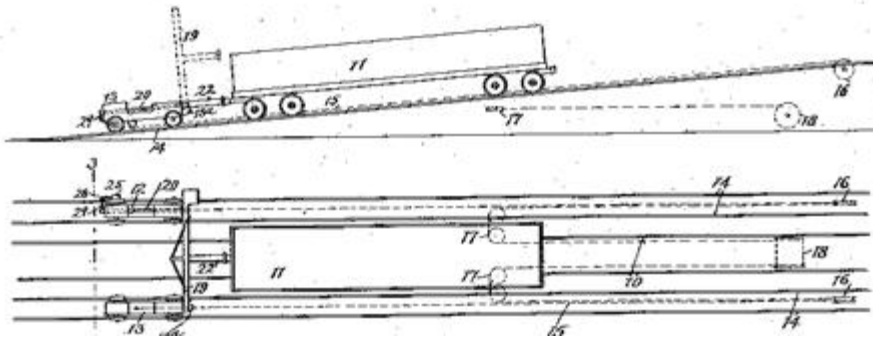
**Shunting or short-distance haulage devices; Similar device for hauling trains on steep gradients or as starting aids; Car propelling devices therefor (overhead travelling cranes combined with auxiliary means for shunting railway vehicles B66C17/26; capstans B66D)**

**Definition statement**

*This subclass/group covers:*

The titles of this group are self-explanatory and do not need to be more specified.

Following drawing shows one example:



## References relevant to classification in this group

*This subclass/group does not cover:*

Overhead travelling cranes combined with auxiliary means for shunting railway vehicles	<a href="#">B66C 17/26</a>
Capstans	<a href="#">B66D</a>
Capstans for shunting	<a href="#">B66D 1/78</a>

## B61J 99/00

**Subject matter not provided for in other groups of this subclass**

### Definition statement

*This subclass/group covers:*

Devices and methods not covered by groups [B61J 1/00](#) to [B61J 3/00](#).