

B61B

RAILWAY SYSTEMS; EQUIPMENT THEREFOR NOT OTHERWISE PROVIDED FOR (lifts or hoists, elevators, escalators, moving walkways B66B)

Definition statement

This subclass/group covers:

Systems in which trains or individual passenger vehicles or load carriers run on or are guided by ground or elevated tracks defined by rails, ropes, cables, chains, racks or other guiding elements for wheels, rollers, or sliding anti-friction devices.

Typical examples are:

- General arrangement of stations or platforms.
- Goods marshalling systems.
- Automatically guided railway vehicles.
- Protection devices for the safety of passengers waiting on or leaving the platform, e.g. gates or video control systems.
- Component parts for rope railways, e.g. cabins, ski-lift seats, cable devices, safety devices for cable fracture, cable lubrication, cable grippers.
- Hybrid personal transport systems.

Informative references

Attention is drawn to the following places, which may be of interest for search:

Electric propulsion	B60L 13/00
Guiding railway traffic, ensuring the safety of railway traffic	B61L
Conveyers	B65G
Track, rail and switches	E01B

B61B 1/00

General arrangement of stations, platforms, or sidings;

Railway networks; Rail vehicle marshalling systems (shunting humps and shunting devices B61J; construction of platforms E01F1/00; time-tables G09D)

Definition statement

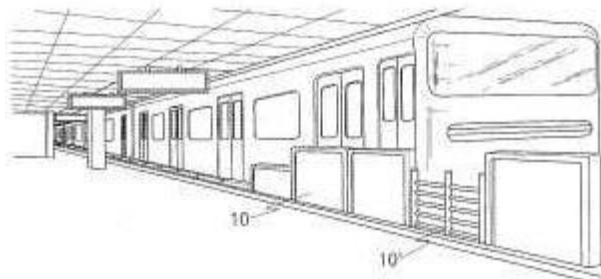
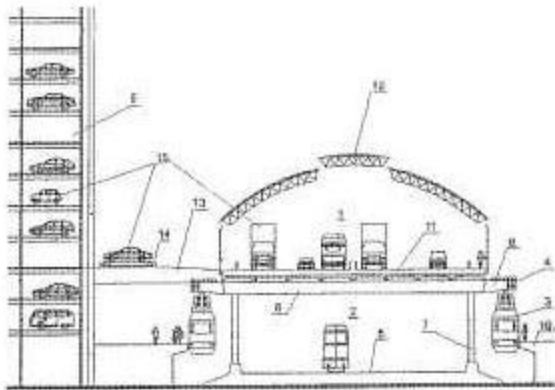
This subclass/group covers:

General arrangement of the station platform to the transportation system to allow an efficient and safe transport of passengers or goods.

Typical examples are:

- Automatic transportation systems, e.g. self-guided railway vehicles.
- Mass transport systems.
- Pipeline transportation systems.
- Protection devices for passengers waiting on the station platform, e.g. gates or video control devices.

Following drawings show two examples for this group:



Informative references

Attention is drawn to the following places, which may be of interest for search:

Track, rails or switches	E01B
Construction of platforms	E01F 1/00
Indicators in the station	G08G 1/127

B61B 3/00

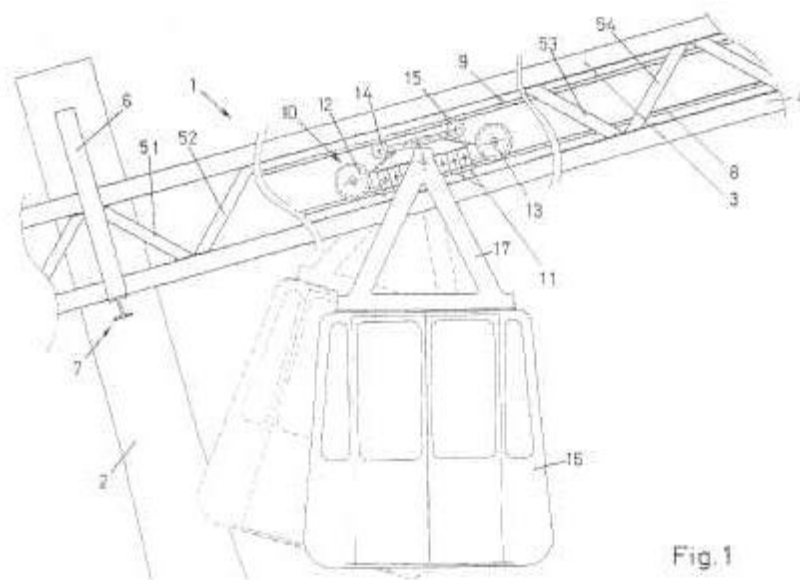
Elevated railway systems with suspended vehicles (with suspended flexible tracks B61B7/00; saddle or like balanced type with monorail B61B13/06; with propelling cables and for transporting materials B65G; tracks therefor E01B25/00)

Definition statement

This subclass/group covers:

Transportation vehicles of the suspended type that runs on elevated tracks being of the rigid type.

Following drawings show one example for this group:



Informative references

Attention is drawn to the following places, which may be of interest for search:

Electric propulsion therefore	B60L 13/00
Conveyers for loading or tipping	B65G
Energy transfer	H02J 5/00

B61B 5/00

Elevated railway systems without suspended vehicles (with monorail B61B13/04; tracks therefor E01B25/00)

Definition statement

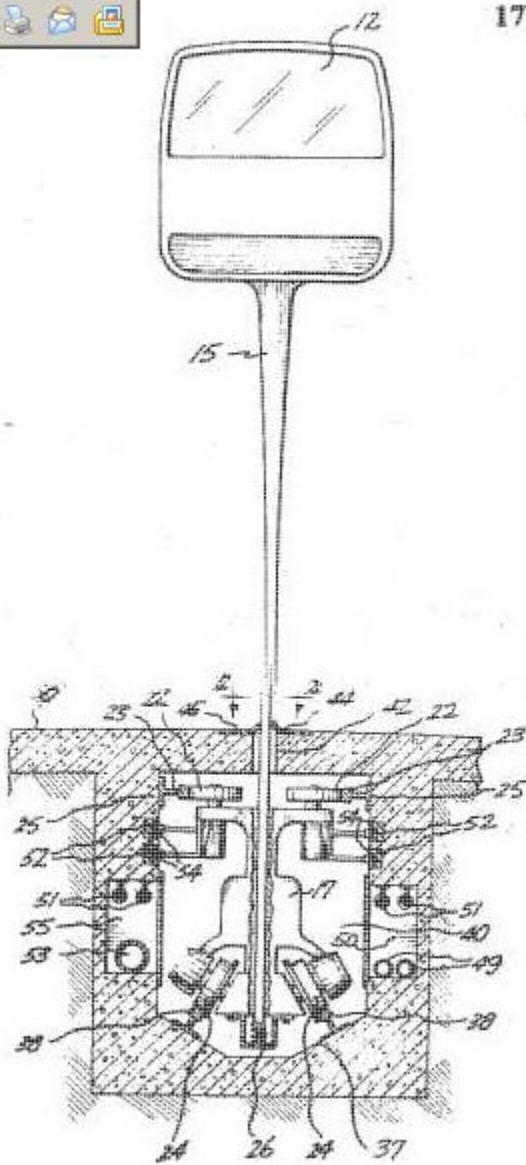
This subclass/group covers:

Elevated transportation vehicles running on the upperside of the track.

Following drawing shows one example for this group:



170



B61B 7/00

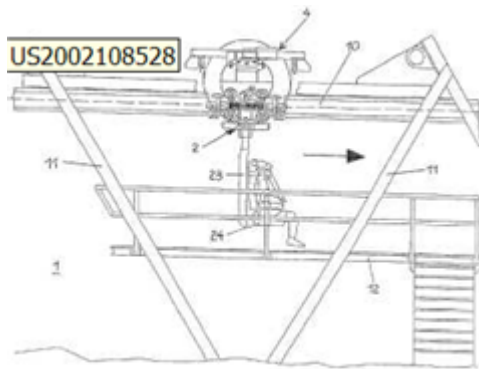
Rope railway systems with suspended flexible tracks

Definition statement

This subclass/group covers:

Transportation systems of the suspended type running on flexible tracks, wherein the track can be a cable or a chain.

Following drawing shows one example:



Informative references

Attention is drawn to the following places, which may be of interest for search:

Toy railways	A63H 21/02
Cable cranes	B66C 21/00
Flexible tracks	E01B 25/14 , E01B 25/16
Camera systems for filming	F16M 11/18 , F16M 11/42

B61B 9/00

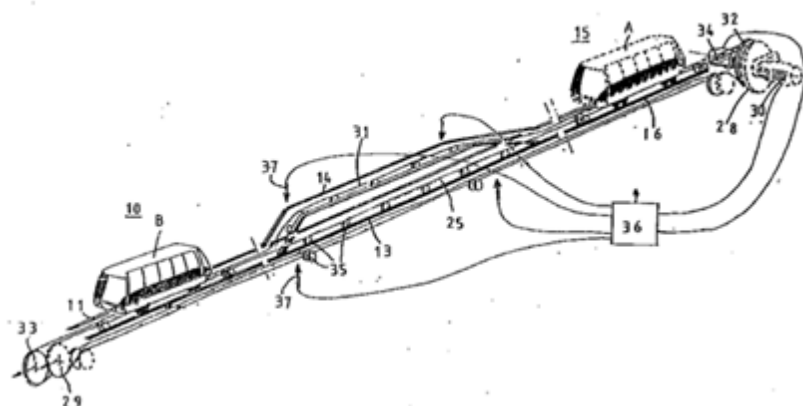
Tramway or funicular systems with rigid track and cable traction (haulage clips B61B12/12)

Definition statement

This subclass/group covers:

Transportation systems moving on a rigid track and being moved by a conveying cable or chain to which the transportation system can be coupled by means of clamping devices arranged thereon.

Following drawing shows one example for this group:



Informative references

Attention is drawn to the following places, which may be of interest for search:

Moving walkways	B66B 21/10
-----------------	----------------------------

B61B 10/00

Power and free systems (ski lifts, sleigh lift or like trackless systems with guided towing cables only B61B11/00)

Definition statement

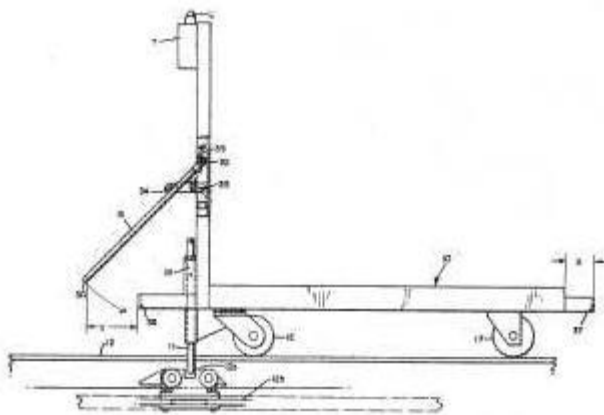
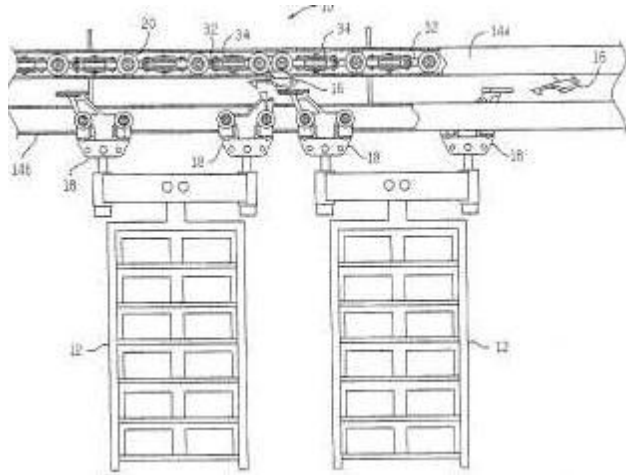
This subclass/group covers:

Conveyors of the power-and-free type comprising a power line track and a free line track positioned conventionally below the power line rail. The power line rail is often provided with a driven chain on which the conveyor conventionally is engageable/disengageable.

Typical examples are:

- Railway vehicles of the towing type running on the ground.
- Railway vehicles rolling on the ground and guided by a track.

Following drawings show two examples for this group.



Informative references

Attention is drawn to the following places, which may be of interest for search:

Road vehicles carrying loads or passengers	B62D 1/26 , B62D 1/28
Conveyors	B65G

B61B 11/00

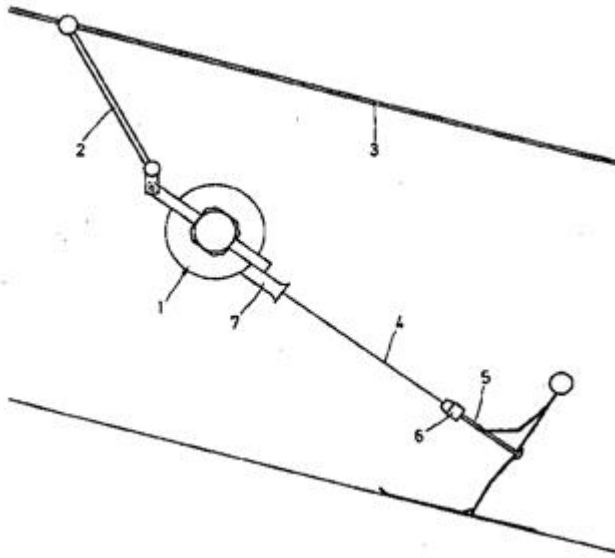
Ski lift, sleigh lift or like trackless systems with guided towing cables only

Definition statement

This subclass/group covers:

Transportation systems wherein the load is running trackless and guided/pulled by towing cables.

Following drawing shows one example for this group:



B61B 12/00

Component parts, details or accessories not provided for in groups B61B7/00 to B61B11/00 (railway brakes B61H; turntables B61J1/06)

Definition statement

This subclass/group covers:

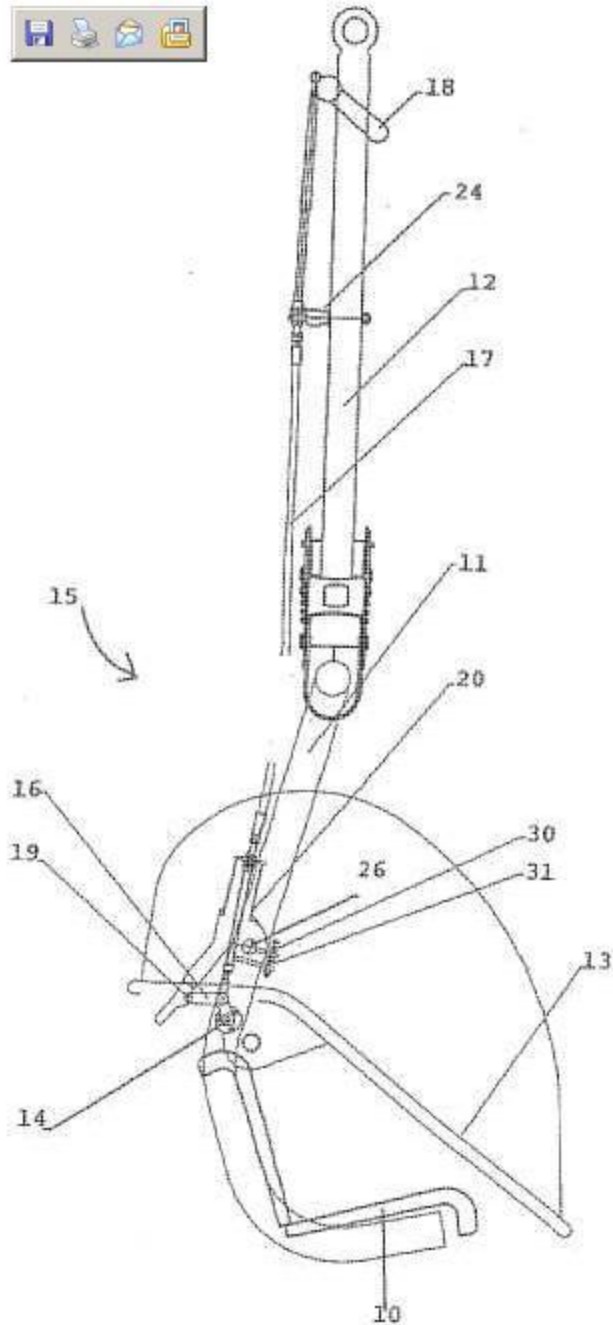
All devices needed to make the cableway faster, safer and more comfortable.

Typical examples are:

- Ski lift radio.
- Vibration damping devices for the cable.
- Cleaning machines to clean ropes.
- Separators for chair lifts.
- Device for transporting a bicycle using a lift.
- Devices for easy entry to the cable car.
- Clamp force testing for cable grippers.
- Devices for monitoring the rotation of a guiding member in a ski lift.
- Devices to avoid derailment of a cable.
- Safety clamping devices for cableway.

- Guiding means for lateral deflection of the cable, see [B61B 12/026](#).
- Guiding means for vertical deflection of the cable, see [B61B 12/02](#).

Following drawing shows one example for this group:



Informative references

Attention is drawn to the following places, which may be of interest for search:

Acceleration for amusements devices	A63G 21/20
-------------------------------------	----------------------------

Details of seats for railway vehicle	B61D 33/00
Brakes for ropes	B61H 9/02
Mining-hoist winding devices	B66B 15/00
Ropers for tracks	E01B 25/18
Rope pulleys	F16H 55/46 , F16H 55/50

B61B 13/00

Other railway systems

Definition statement

This subclass/group covers:

Other railway systems not provided in the groups [B61B 3/00](#) to [B61B 11/00](#).

Typical examples are:

- Railroad systems utilising multiple tracks.
- Air cushion transportation systems.
- Magnetic levitation propulsion systems.
- Evacuated tube transportation systems.
- Devices for contactless movement of transportation systems.

Informative references

Attention is drawn to the following places, which may be of interest for search:

Toy railways with cable vehicles	A63H 21/02
Propulsions	B60L 13/00
Rails	E01B 25/00
Pipe or tunnel systems	F16L 55/00
Energy transfer	H02J 5/00

B61B 15/00

Combinations of railway systems

Definition statement

This subclass/group covers:

Transportation systems with vertical/horizontal movement relative to the track and small vehicles for individual transport in cities which are coupled/guided for intercity transport on highways.

The following drawing shows one example for this group:

