

A24D**CIGARS; CIGARETTES; TOBACCO SMOKE FILTERS; MOUTHPIECES FOR CIGARS OR CIGARETTES; MANUFACTURE OF TOBACCO SMOKE FILTERS OR MOUTHPIECES****Definition statement***This place covers:*

Cigars, Cigarettes

Tobacco smoke filters

Manufacture of tobacco smoke filters or mouthpieces

A24D 1/00**Cigars; Cigarettes****Definition statement***This place covers:*

Cigars, Cigarettes as products per se

References**Limiting references***This place does not cover:*

Manufacture of cigars or cigarettes	A24C
Electronic or imitation cigarettes	A24F 47/002

Informative references*Attention is drawn to the following places, which may be of interest for search:*

Filters	A24D 3/00
Pipes	A24F 1/00

A24D 1/02**with special covers****Definition statement***This place covers:*

Cigars, Cigarettes in which the wrapper has a particular structure or composition.

References**Limiting references***This place does not cover:*

Tobacco smoke filters with ventilation means	A24D 3/043
--	----------------------------

Informative references

Attention is drawn to the following places, which may be of interest for search:

Treatment of cigarette papers	A24C 5/005
-------------------------------	----------------------------

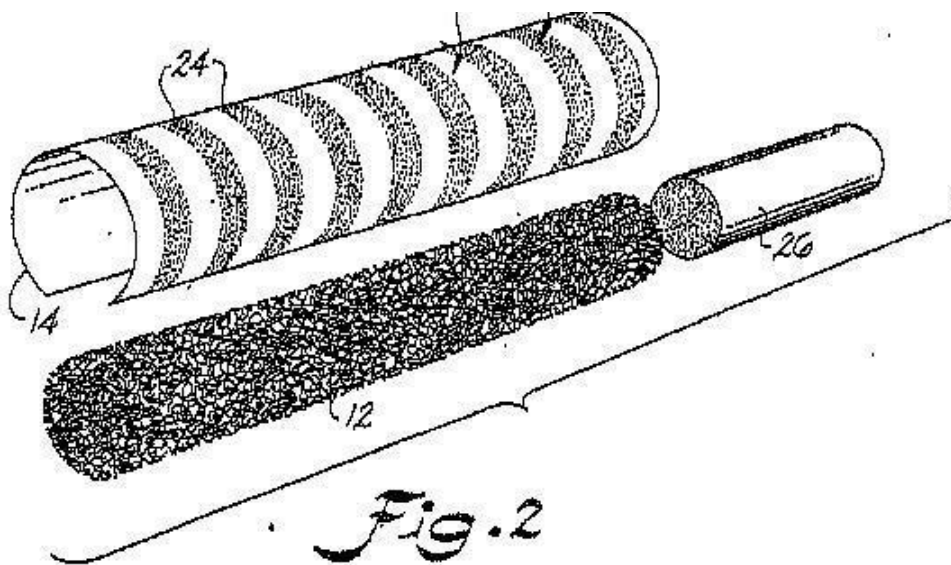
A24D 1/025

{the covers having material applied to defined areas, e.g. bands for reducing the ignition propensity}

Definition statement

This place covers:

US20030136420 A1

**Glossary of terms**

In this place, the following terms or expressions are used with the meaning indicated:

Ignition propensity	the capacity of a cigarette of burning through when left resting on a substrate without puffing
---------------------	---

Synonyms and Keywords

In patent documents, the following abbreviations are often used:

LIP	Low ignition propensity, Low ignition proclivity
-----	--

A24D 1/042

{with mouthpieces ([A24D 1/047](#) takes precedence; mouthpieces per se [A24D 3/18](#))}

References**Limiting references**

This place does not cover:

With extensible mouthpieces	A24D 1/047
-----------------------------	----------------------------

Informative references

Attention is drawn to the following places, which may be of interest for search:

Mouthpieces per se	A24D 3/18
--------------------	---------------------------

A24D 1/08

with lighting means (pyrophoric compositions [C06C 15/00](#); lighters per se [F23Q](#))

Definition statement

This place covers:

Smoking products combined with pyrophoric or easily ignitable material and products combined with match scratchers or analogous means

References**Informative references**

Attention is drawn to the following places, which may be of interest for search:

Pyrophoric compositions	C06C 15/00
Lighters per se	F23Q

A24D 3/00

Tobacco smoke filters, e.g. filter-tips, filtering inserts (filters in general [B01D](#));
Mouthpieces for cigars or cigarettes (for pipes, for cigar or cigarette holders [A24F 7/00](#))

Definition statement

This place covers:

Filters for tobacco smoke, products per se and their manufacture

Mouthpieces for cigars or cigarettes

References

Limiting references

This place does not cover:

Mouthpieces for pipes, for cigar or cigarette holders	A24F 7/00
---	---------------------------

Informative references

Attention is drawn to the following places, which may be of interest for search:

Special covers for cigarettes, cigars	A24D 1/02
Pneumatic transport of filters from the filter maker to the filter attaching machines	A24C 5/323
Filters in general	B01D

A24D 3/02

Manufacture of tobacco smoke filters (manufacture of paper or cellulosic materials for filters [D21](#))

Definition statement

This place covers:

The production of tobacco smoke filters, e.g. from the filter tow bale to the final product

References

Limiting references

This place does not cover:

Attaching filters to the cigarette rod	A24C 5/47
Manufacture of paper or cellulosic material	D21

Special rules of classification

When the process of manufacture confers to the final product a particular structure, then a class of [A24D 3/04](#) should be given.

A24D 3/0287

{for composite filters}

References

Informative references

Attention is drawn to the following places, which may be of interest for search:

Transporting cigarettes during manufacture with lateral transferring means	A24C 5/326
--	----------------------------

A24D 3/0295**{Process control means}****Definition statement***This place covers:*

Control means for the filter manufacturing process.

References**Informative references***Attention is drawn to the following places, which may be of interest for search:*

Examining cigarettes or the rod	A24C 5/34
---------------------------------	---------------------------

A24D 3/04**Tobacco smoke filters characterised by their shape or structure****Definition statement***This place covers:*

The tobacco smoke filter as a product, eventually incorporated in a smoking article

Mechanical or structural aspects of the finished filter product

References**Limiting references***This place does not cover:*

Manufacture of tobacco smoke filters	A24D 3/02
Chemical aspects of filter materials	A24D 3/06

Informative references*Attention is drawn to the following places, which may be of interest for search:*

Structural features of the filter material itself or of a filter additive	A24D 3/062
---	----------------------------

A24D 3/043**{with ventilation means, e.g. air dilution ([A24D 3/041](#) takes precedence)}****References****Limiting references***This place does not cover:*

Adjustable means for modifying the degree of filtration of the filter	A24D 3/041
---	----------------------------

A24D 3/048

{containing additives (additive composition [A24D 3/061](#))}

Definition statement

This place covers:

Filters characterized by the presence of an additive in its constructional features.

References

Limiting references

This place does not cover:

Additive composition	A24D 3/06
----------------------	---------------------------

Special rules of classification

When the additive to the filter is incorporated in the tipping paper, the document should be classified also in [A24D 1/02](#) (special covers for cigarettes)

This class takes precedence over [A24B 15/282](#) (treatment of tobacco products by chemical substances, the action of which being delayed by indirect addition of the chemical substances)

A24D 3/06

Use of materials for tobacco smoke filters

Definition statement

This place covers:

Material used in the tobacco smoke filter.

Chemical, structural or functional aspects of the material or additive.

References

Limiting references

This place does not cover:

Manufacture of tobacco smoke filters	A24D 3/02
Shape or structure of tobacco smoke filter itself	A24D 3/04

Special rules of classification

This group comprises materials including natural organic or inorganic compounds of undefined constitution e.g. tobacco, sand, pine needles, cork and other materials of undefined constitution obtained from animal or plants

A24D 3/061

{containing additives entrapped within capsules, sponge-like material or the like, for further release upon smoking (constructional aspects of the filter [A24D 3/048](#))}

References

Informative references

Attention is drawn to the following places, which may be of interest for search:

Constructional aspects of the filter itself	A24D 3/048
---	----------------------------

Special rules of classification

capsules, sponge like material, (foam or cellular structure are also classified in [A24D 3/066](#))

A24D 3/062

{characterised by structural features}

Definition statement

This place covers:

Structural features of the material itself or the additive (other than fibers), e.g. foam like material, particle size or shape of granular additives.

References

Informative references

Attention is drawn to the following places, which may be of interest for search:

Shape or structure of the filter itself	A24D 3/04
---	---------------------------

Special rules of classification

Documents in these subgroups are also classified in subgroups [A24D 3/06](#) and [A24D 3/08-A24D 3/163](#), according to the chemical nature of the material or additive. Double classification is therefore necessary.

A24D 3/064

{having non-circular cross-section}

Definition statement

This place covers:

e.g. Y or C cross-section

A24D 3/065

{with sheath/core of bi-component type structure}

Definition statement

This place covers:

Fibers with any composite structure, i.e. at least two distinctive regions e.g. sheath/core

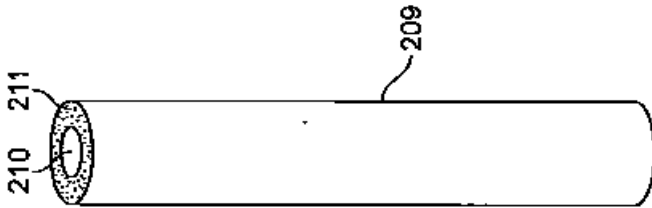


Figure taken from patent application US2008149119 from PHILIP MORRIS USA INC

Sheath/core type or hollow fibers.

Bi-component type fibers:

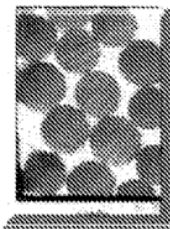


FIG. 2A

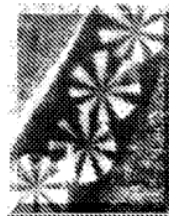


FIG. 2B

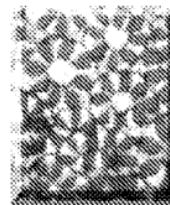


FIG. 2C



FIG. 2D

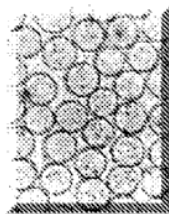


FIG. 2E

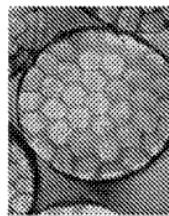


FIG. 2F

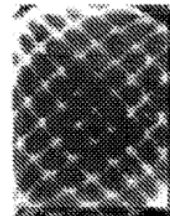


FIG. 2G

Figure taken from patent application WO2013019413 from R.J. REYNOLDS TOBACCO COMPANY

A24D 3/066**{in the form of foam or having cellular structure}****Definition statement***This place covers:*

foam-like, cellular or porous material

A24D 3/067**{characterised by functional properties}****Definition statement***This place covers:*

Functional properties of the material, additive or the filter itself, e.g. biodegradable filter, disintegrative paper or disintegration enhancers.

Special rules of classificationDocuments in these subgroups are also classified in subgroups [A24D 3/06](#) and [A24D 3/08-A24D 3/163](#), according to the chemical nature of the material or additive. Double classification is therefore necessary.**A24D 3/068****{Biodegradable or disintegrable}****Definition statement***This place covers:*

Biodegradability or ease of disintegration in the environment is an important feature of the material or filter itself.

A24D 3/08**of organic materials as carrier or major constituent (of ion exchange materials [A24D 3/12](#))****References****Limiting references***This place does not cover:*

Organic compounds of undefined constitution e.g. pine needle, cork, tobacco, and other organic materials of undefined constitution obtained from animal or plants	A24D 3/06
Of ion exchange materials	A24D 3/12

Special rules of classification

Synthetic products, generally polymeric. The material constitute the carrier or main component of the filter.

A24D 3/10**of cellulose or cellulose derivatives****Definition statement***This place covers:*

Cellulose, e.g. paper or derivative e.g. cellulose acetate

A24D 3/14**of organic materials as additive (of ion exchange materials [A24D 3/12](#))****Definition statement***This place covers:*

Organic additive, e.g. flavouring agent,

References**Limiting references***This place does not cover:*

Of ion exchange materials	A24D 3/12
---------------------------	---------------------------

A24D 3/145**{Microbial metabolite, e.g. enzyme}****Definition statement***This place covers:*

Enzymes or other microbial metabolite or extract thereof, e.g. bacterial extract.

A24D 3/16**of inorganic materials****Definition statement***This place covers:*

Comprising inorganic material as main constituent or as additive

References**Limiting references***This place does not cover:*

Inorganic compounds of undefined constitution e.g. sand, and other inorganic materials of undefined constitution obtained from animal or plants	A24D 3/06
---	---------------------------

A24D 3/163**{Carbon}****Definition statement***This place covers:*

Carbon, generally active carbon.

A24D 3/166**{Silicic acid or silicates}****Definition statement***This place covers:*

includes also silica, zeolites, aluminosilicates

A24D 3/18

Mouthpieces for cigars or cigarettes; Manufacture thereof ([A24D 3/02](#) takes precedence; making tipping materials for, or attaching them to mouthpieces of, cigars or cigarettes [A24C 5/56](#); producing cigar or cigarette holders from plastics or from substances in a plastic state [B29D 23/14](#); manufacture from metal, see the relevant subclasses of Section B)

Definition statement*This place covers:*

elements adapted to be inserted at the mouth end of cigar or cigarettes, usually but not necessarily having filtering action, e.g. elements for smoking Russian cigarettes.

References**Limiting references***This place does not cover:*

Manufacture of tobacco smoke filters	A24D 3/02
--------------------------------------	---------------------------

Informative references*Attention is drawn to the following places, which may be of interest for search:*

Making tipping materials for, or attaching them to mouthpieces of, cigars or cigarettes	A24C 5/56
Producing cigar or cigarette holders from plastics or substances in a plastic state	B29D 23/14