

EUROPEAN PATENT OFFICE
U.S. PATENT AND TRADEMARK OFFICE

CPC NOTICE OF CHANGES 718

DATE: AUGUST 1, 2019

PROJECT RP0364

The following classification changes will be effected by this Notice of Changes:

<u>Action*</u>	<u>Subclass</u>	<u>Group(s)</u>
SCHEME:		
Symbols New:	A47G	1/101,1/102
Titles Changed:	A47G	1/0616
Warnings New:	A47G	1/10,1/101,1/102
DEFINITIONS:		
Definitions New:	A47G	1/0616, 1/101, 1/102
Definitions Modified:	A47G	1/16

*Delete rows for actions not applicable; Add additional rows as needed.

This Notice of Changes includes the following *[Check the ones included]:*

1. CLASSIFICATION SCHEME CHANGES

- A. New, Modified or Deleted Group(s)
- B. New, Modified or Deleted Warning(s)
- C. New, Modified or Deleted Note(s)
- D. New, Modified or Deleted Guidance Heading(s)

2. DEFINITIONS

- A. New or Modified Definitions (Full definition template)
- B. Modified or Deleted Definitions (Definitions Quick Fix)

3. REVISION CONCORDANCE LIST (RCL)

4. CHANGES TO THE CPC-TO-IPC CONCORDANCE LIST (CICL)

5. CHANGES TO THE CROSS-REFERENCE LIST (CRL)

CPC NOTICE OF CHANGES 718

DATE: AUGUST 1, 2019

PROJECT RP0364

1. CLASSIFICATION SCHEME CHANGES

A. New, Modified or Deleted Group(s)

SUBCLASS A47G – PICTURE FRAMES

<u>Type*</u>	<u>Symbol</u>	<u>Indent Level Number of dots (e.g. 0, 1, 2)</u>	<u>Title</u> “CPC only” text should normally be enclosed in {curly brackets}**	<u>Transferred to[#]</u>
M	A47G1/0616	2	{Ornamental frames, e.g. with illumination, speakers or decorative features}	
C	A47G1/10	2	Corner clips or corner-connecting appliances for frames	A47G1/10, A47G1/101, A47G1/102
N	A47G1/101	3	{for insertion within frame members}	
N	A47G1/102	4	{having an aperture to receive a fastener to connect to a frame member}	

*N = new entries where reclassification into entries is involved; C = entries with modified file scope where reclassification of documents from the entries is involved; Q = new entries which are firstly populated with documents via administrative transfers from deleted (D) entries. Afterwards, the transferred documents into the Q entry will either stay or be moved to more appropriate entries, as determined by intellectual reclassification; T= existing entries with enlarged file scope, which receive documents from C or D entries, e.g. when a limiting reference is removed from the entry title; M = entries with no change to the file scope (no reclassification); D = deleted entries; F = frozen entries will be deleted once reclassification of documents from the entries is completed; U = entries that are unchanged.

NOTES:

- **No {curly brackets} are used for titles in CPC only subclasses, e.g. C12Y, A23Y; 2000 series symbol titles of groups found at the end of schemes (orthogonal codes); or the Y section titles. The {curly brackets} are used for 2000 series symbol titles found interspersed throughout the main trunk schemes (breakdown codes).
- U groups: it is obligatory to display the required “anchor” symbol (U group), i.e. the entry immediately preceding a new group or an array of new groups to be created (in case new groups are not clearly subgroups of C-type groups). Always include the symbol, indent level and title of the U group in the table above.
- All entry types should be included in the scheme changes table above for better understanding of the overall scheme change picture. Symbol, indent level, and title are required for all types .
- “Transferred to” column must be completed for all C, D, F, and Q type entries. F groups will be deleted once reclassification is completed.
- When multiple symbols are included in the “Transferred to” column, avoid using ranges of symbols in order to be as precise as possible.
- For administrative transfer of documents, the following text should be used: “< administrative transfer to XX>”, “<administrative transfer to XX and YY simultaneously>”, or “<administrative transfer to XX, YY, ...and ZZ simultaneously>” when administrative transfer of the same documents is to more than one place.
- Administrative transfer to main trunk groups is assumed to be the source allocation type, unless otherwise indicated.
- Administrative transfer to 2000/Y series groups is assumed to be “additional information”.
- If needed, instructions for allocation type should be indicated within the angle brackets using the abbreviations “ADD” or “INV”: <administrative transfer to XX ADD> , <administrative transfer to XX INV>, or < administrative transfer to XX ADD, YY INV, ... and ZZ ADD simultaneously>.
- In certain situations, the “D” entries of 2000-series or Y-series groups may not require a destination (“Transferred to”) symbol, however it is required to specify “<no transfer>” in the “Transferred to” column for such cases.
- For finalisation projects, the deleted “F” symbols should have <no transfer> in the “Transferred to” column.
- For more details about the types of scheme change, see CPC Guide.

CPC NOTICE OF CHANGES 718

DATE: AUGUST 1, 2019

PROJECT RP0364

B. New, Modified or Deleted Warning(s)

SUBCLASS A47G – PICTURE FRAMES

<u>Type*</u>	<u>Location</u>	<u>Old Warning</u>	<u>New/Modified Warning</u>
N	A47G 1/10		Group A47G 1/10 is impacted by reclassification into groups A47G 1/101 and A47G 1/102. Groups A47G 1/10, A47G 1/101, and A47G 1/102 should be considered in order to perform a complete search.
N	A47G 1/101		Group A47G 1/101 is incomplete pending reclassification of documents from group A47G 1/10. Groups A47G 1/10 and A47G 1/101 should be considered in order to perform a complete search.
N	A47G 1/102		Group A47G 1/102 is incomplete pending reclassification of documents from group A47G 1/10. Groups A47G 1/10 and A47G 1/102 should be considered in order to perform a complete search.

*N = new warning, M = modified warning, D = deleted warning

NOTE: The “Location” column only requires the symbol PRIOR to the location of the warning. No further directions such as “before” or “after” are required.

DATE: AUGUST 1, 2019

PROJECT RP0364

2. A. DEFINITIONS (new)

A47G1/0616

Definition statement

This place covers:

Picture frames comprising special features other than those necessary for picture display such as:

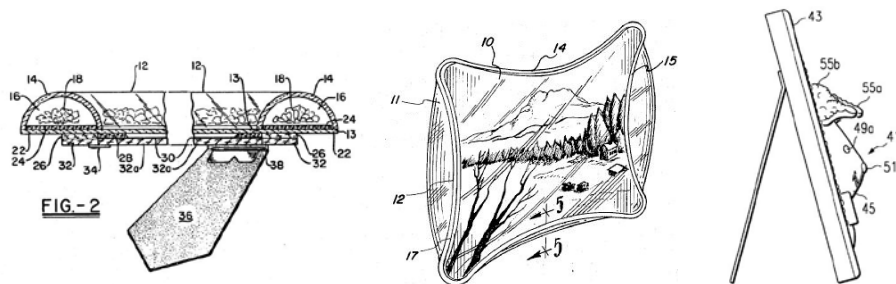
- picture frames having special features, e.g. decoration, illumination, sound, inflatability,
- picture frames in combination with another article, e.g. furniture, article of clothing, book, firefighting equipment, doll.

Informative references

Attention is drawn to the following places, which may be of interest for search:

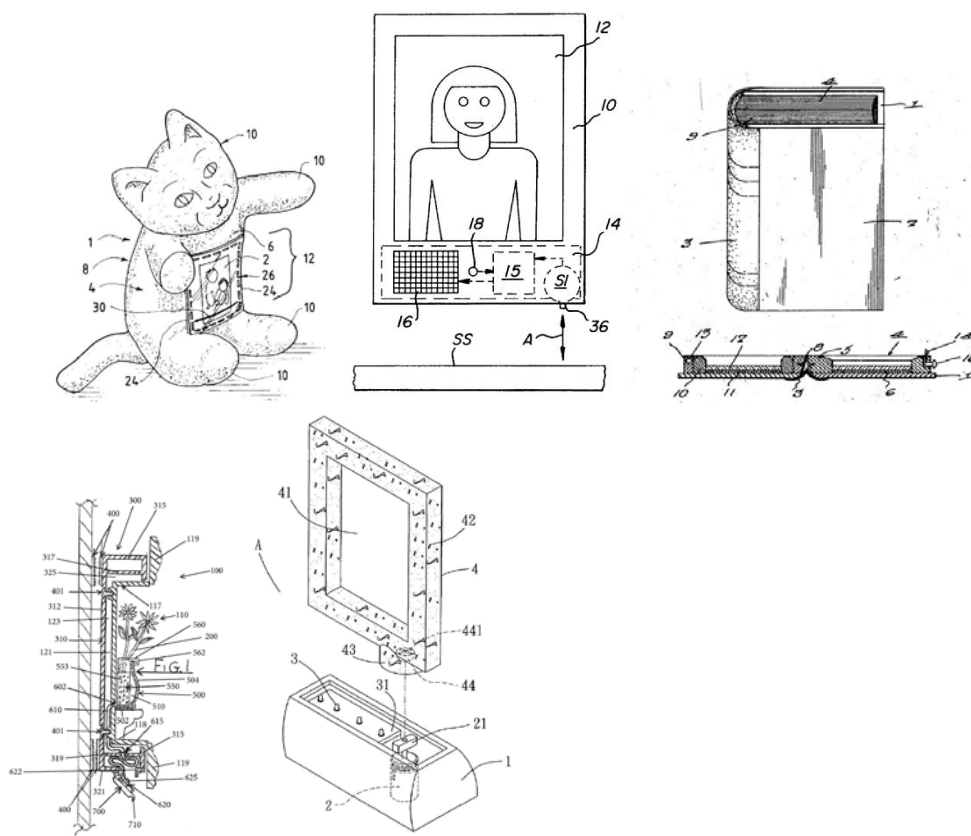
Frames comprising magnifying properties	A47G2001/002
Frames made from flexible material	A47G2001/005
Frames for housing medals, badges or the like	A47G1/12
Decorative arts	B44C, B44D, B44F
Advertising frames	G09F15/00
Mountings for pictures; Mountings of horns on plates	B44C5/02
Cases for storing discs	G11B33/0405

Examples:



DATE: AUGUST 1, 2019

PROJECT RP0364



A47G1/101

Definition statement

This place covers:

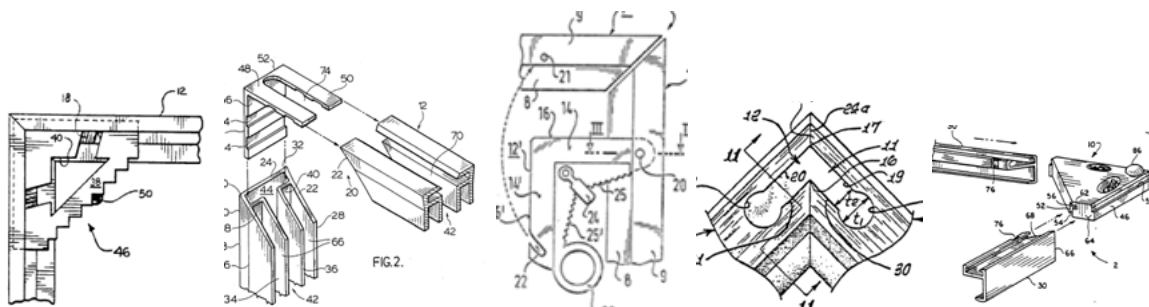
Corner clips or corner-connecting appliances which are:

- for connecting mitred picture frame members for insertion within,
- components separate from the mitred picture frame members,
- substantially L-shaped, each arm connected to a picture frame member,
- hidden when viewing the display side of the picture frame.

Examples:

DATE: AUGUST 1, 2019

PROJECT RP0364



Informative references

Attention is drawn to the following places, which may be of interest for search:

Non-metal corner connections for furniture	F16B12/46
Metal corner connections for furniture	F16B12/50
having a corner insert inserted in mitred members	F16B2012/505
Mitre joints for windows, doors or wings using separate connection pieces	E06B3/9645
Corner filling pieces for plinths	E04F19/0486
Corner mounts for frameless picture holders	A47G1/0638
Corner-holding devices for photographs in albums	B42F5/06
Clamps for holding (mitred) frame members	B25B5/142
Canvas stretching frames	B44D3/185

A47G1/102

Definition statement

This place covers:

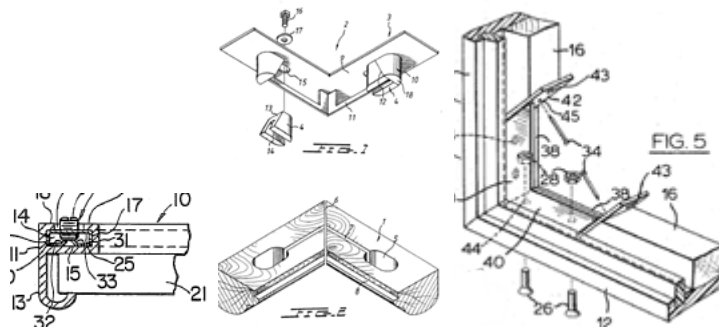
Corner clips or corner-connecting appliances which are:

- for connecting mitred picture frame members for insertion within,
- components separate from the mitred picture frame members,
- substantially L-shaped, each arm connected to a picture frame member,
- hidden when viewing the display side of the picture frame,
- and having an aperture in an arm to receive a fastener, e.g. a screw, a nail, a movable expansion member, an excentric, a wedge or the like, to connect to or frictionally engage a frame member.

Examples:

DATE: AUGUST 1, 2019

PROJECT RP0364



Informative references

Attention is drawn to the following places, which may be of interest for search:

furniture having a corner insert inserted in mitred members	F16B2012/505
Mitre joints for windows, doors or wings using separate connection pieces	E06B3/9645
Corner filling pieces for plinths	E04F19/0486
Canvas stretching frames	B44D3/185

2. A. DEFINITIONS (modified)

A47G 1/16

Definition statement

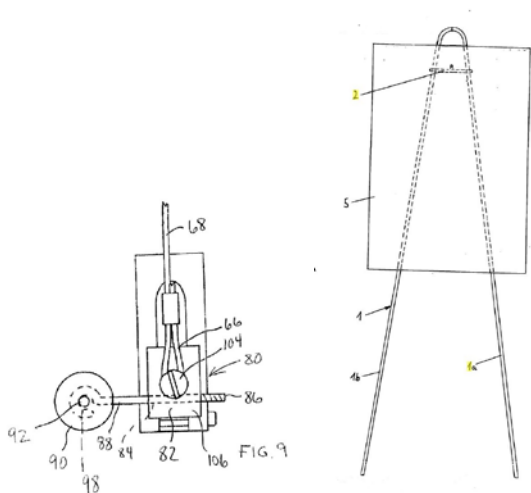
Delete: From the sixth bulleted statement, the following text:

(US2002/0179802 A, -803 A

From the ninth bulleted statement, the following text:

(DE89129344)

Insert: The following two new images after the existing images that appear after the the bulleted list:



CPC NOTICE OF CHANGES 718

DATE: AUGUST 1, 2019

PROJECT RP0364

3. REVISION CONCORDANCE LIST (RCL)

<u>Type*</u>	<u>From CPC Symbol (existing)</u>	<u>To CPC Symbol(s)</u>
C	A47G 1/10	A47G 1/10, A47G 1/101, A47G 1/102

* C = entries with modified file scope where reclassification of documents from the entries is involved; Q = new entries which are firstly populated with documents via administrative transfers from deleted (D) entries. Afterwards, the transferred documents into the Q entry will either stay or be moved to more appropriate entries, as determined by intellectual reclassification; D = deleted entries; F = frozen entries will be deleted once reclassification of documents from the entries is completed.

NOTES:

- Only C, D, F, and Q type entries are included in the table above.
- When multiple symbols are included in the “To” column, do not use ranges of symbols.
- For administrative transfer of documents, the following text should be used: “< administrative transfer to XX>”, “<administrative transfer to XX and YY simultaneously>”, or “<administrative transfer to XX, YY, ...and ZZ simultaneously>” when administrative transfer of the same documents is to more than one place.
- Administrative transfer to main trunk groups is assumed to be the source allocation type, unless otherwise indicated.
- Administrative transfer to 2000/Y series groups is assumed to be “additional information”.
- If needed, instructions for allocation type should be indicated within the angle brackets using the abbreviations “ADD” or “INV”: <administrative transfer to XX ADD>, <administrative transfer to XX INV>, or < administrative transfer to XX ADD, YY INV, ... and ZZ ADD simultaneously>.
- In certain situations, the “D” entries of 2000-series or Y-series groups may not require a destination (“To”) symbol, however it is required to specify “<no transfer>” in the “To” column for such cases.
- RCL is not needed for finalisation projects.

CPC NOTICE OF CHANGES 718

DATE: AUGUST 1, 2019

PROJECT RP0364

4. CHANGES TO THE CPC-TO-IPC CONCORDANCE LIST (CICL)

<u>CPC</u>	<u>IPC</u>	<u>Action*</u>
A47G 1/101	A47G 1/10	NEW
A47G 1/102	A47G 1/10	NEW

*Action column:

- For an (N) or (Q) entry, provide an IPC symbol and complete the Action column with “NEW.”
- For an existing CPC main trunk entry or indexing entry where the existing IPC symbol needs to be changed, provide an updated IPC symbol and complete the Action column with “UPDATED.”
- For a (D) CPC entry or indexing entry complete the Action column with “DELETE.” IPC symbol does not need to be included in the IPC column.
- For an (N) 2000 series CPC entry which is positioned within the main trunk scheme (breakdown code) provide an IPC symbol and complete the action column with “NEW”.
- For an (N) 2000 series CPC entry positioned at the end of the CPC scheme (orthogonal code), with no IPC equivalent, complete the IPC column with “CPCONLY” and complete the action column with “NEW”.

NOTES:

- F symbols are not included in the CICL table above.
- T and M symbols are not included in the CICL table above unless a change to the existing IPC is desired.