

EUROPEAN PATENT OFFICE  
U.S. PATENT AND TRADEMARK OFFICE

CPC NOTICE OF CHANGES 490

DATE: JANUARY 1, 2018

PROJECT RP0506

**The following classification changes will be effected by this Notice of Changes:**

<u>Action*</u>	<u>Subclass</u>	<u>Group(s)</u>
<b>SCHEME:</b>		
Symbols Deleted:	A41D	1/20, 1/205
Symbols New:	A41D	1/085, 1/089, 1/21, 1/215
Titles Changed:	A41D	1/04, 1/08, 1/082, 1/084, 1/086, 1/088, 1/22
Warnings New:	A41D	1/08, 1/085, 1/089
<b>DEFINITIONS:</b>		
Definitions Deleted: (no frozen (F) symbol definitions should be deleted)	A41D	1/20, 1/205
Definitions New:	A41D	1/21, 1/215
Definitions Modified:	A41C	subclass
	A41D	1/00, 1/002, 1/007, 1/04, 1/06, 1/08, 1/082, 1/086, 1/088, 1/10, 1/14, 1/16, 1/18, 1/22

\*Delete rows for actions not applicable; Add additional rows as needed.

**The following subclasses/groups are also impacted by this Notice of Changes (indicate subclasses/groups outside of the project scope, such as those listed in the CRL): A41C 1/10; A41D 1/06**

**This Notice of Changes includes the following [Check the ones included]:**

1. CLASSIFICATION SCHEME CHANGES

- A. New, Modified or Deleted Group(s)
- B. New, Modified or Deleted Warning(s)
- C. New, Modified or Deleted Note(s)
- D. New, Modified or Deleted Guidance Heading(s)

2. DEFINITIONS

- A. New or Modified Definitions (Full definition template)
- B. Modified or Deleted Definitions (Definitions Quick Fix)

3.  REVISION CONCORDANCE LIST (RCL)

4.  CHANGES TO THE CPC-TO-IPC CONCORDANCE LIST (CICL)

5.  CHANGES TO THE CROSS-REFERENCE LIST (CRL)

## CPC NOTICE OF CHANGES 490

DATE: JANUARY 1, 2018

PROJECT RP0506

## 1. CLASSIFICATION SCHEME CHANGES

A. New, Modified or Deleted Group(s)SUBCLASS **A41D** - OUTERWEAR; PROTECTIVE GARMENTS; ACCESSORIES

<u>Type*</u>	<u>Symbol</u>	<u>Indent Level Number of dots (e.g. 0, 1, 2)</u>	<u>Title (new or modified) "CPC only" text should normally be enclosed in {curly brackets}**</u>	<u>Transferred to#</u>
U	A41D 1/00	0	Garments (for children A41D 11/00)	
M	A41D 1/04	1	Vests, jerseys, sweaters or the like	
U	A41D 1/06	1	Trousers	
C	A41D 1/08	2	specially adapted for sporting purposes	A41D 1/08, A41D 1/085, A41D 1/089
M	A41D 1/082	3	for skiing	
M	A41D 1/084	3	for cycling	
N	A41D 1/085	3	for playing golf	
M	A41D 1/086	3	for horse riding	
M	A41D 1/088	3	{with crotch reinforcement}	
N	A41D 1/089	3	Shorts	
D	A41D 1/20	1	<i>Maternity clothing</i>	<Administrative transfer to A41D 1/21>
D	A41D 1/205	2	<i>{Nursing clothing (brassières for nursing mothers A41C 3/04)}</i>	< Administrative transfer to A41D 1/215>
N	A41D 1/21	1	Maternity clothing; Clothing specially adapted for persons caring for infants	
N	A41D 1/215	2	Nursing clothing, e.g. for breastfeeding	
M	A41D 1/22	1	Clothing specially adapted for women, not otherwise provided for	

\*N = new entries where reclassification into entries is involved; C = entries with modified file scope where reclassification of documents from the entries is involved; Q = new entries which are firstly populated with documents via administrative transfers from deleted (D) entries. Afterwards, the transferred documents into the Q entry will either stay or be moved to more appropriate entries, as determined by intellectual reclassification; E= existing entries with enlarged file scope, which receive documents from C or D entries, e.g. when a limiting reference is removed from the entry title; M = entries with no change to the file scope (no reclassification); D = deleted entries; F = frozen entries will be deleted once reclassification of documents from the entries is completed; U = entries that are unchanged.

## NOTES:

- \*\*No {curly brackets} are used for titles in CPC only subclasses, e.g. C12Y, A23Y; 2000 series symbol titles of groups found at the end of schemes (orthogonal codes); or the Y section titles. The {curly brackets} are used for 2000 series symbol titles found interspersed throughout the main trunk schemes (breakdown codes).
- For U groups, the minimum requirement is to include the U group located immediately prior to the N group or N group array, in order to show the N group hierarchy and improve the readability and understanding of the scheme. Always include the symbol, indent level and title of the U group in the table above.
- All entry types should be included in the scheme changes table above for better understanding of the overall scheme change picture. Symbol, indent level, and title are required for all types except "D" which requires only a symbol.
- #“Transferred to” column must be completed for all C, D, F, and Q type entries. F groups will be deleted once reclassification is completed.

CPC NOTICE OF CHANGES 490

DATE: JANUARY 1, 2018

PROJECT RP0506

- When multiple symbols are included in the “Transferred to” column, avoid using ranges of symbols in order to be as precise as possible.
- For administrative transfer of documents, the following text should be used: “< administrative transfer to XX>” or “<administrative transfer to XX and YY simultaneously>” when administrative transfer of the same documents is to more than one place.
- Administrative transfer to main trunk groups is assumed to be “invention information”, unless otherwise indicated, and to 2000 series groups is assumed to be “additional information”.

CPC NOTICE OF CHANGES 490

DATE: JANUARY 1, 2018

PROJECT RP0506

B. New, Modified or Deleted Warning notice(s)

**SUBCLASS A41D - OUTERWEAR; PROTECTIVE GARMENTS; ACCESSORIES ---**

<u>Type*</u>	<u>Location</u>	<u>Old Warning notice</u>	<u>New/Modified Warning notice</u>
N	A41D 1/08		Group A41D 1/08 is impacted by reclassification into groups A41D 1/085 and A41D 1/089.  Groups A41D 1/08, A41D 1/085 and A41D 1/089 should be considered in order to perform a complete search.
N	A41D 1/085		Group A41D 1/085 is incomplete pending reclassification of documents from group A41D 1/08.  Groups A41D 1/08 and A41D 1/085 should be considered in order to perform a complete search.
N	A41D 1/089		Group A41D 1/089 is incomplete pending reclassification of documents from group A41D 1/08.  Groups A41D 1/08 and A41D 1/089 should be considered in order to perform a complete search.

\*N = new warning, M = modified warning, D = deleted warning

NOTE: The "Location" column only requires the symbol PRIOR to the location of the warning. No further directions such as "before" or "after" are required.

## 2. A. DEFINITIONS (modified)

### A41C

CORSETS; BRASSIERES

**Insert** the following new Definition statement:

#### **Definition statement**

*This place covers:*

Corsets or girdles being a special type of undergarments for shaping or correction of a figure, with or without stays or steels, auxiliary belts, straps or fasteners; corsets with or without brassieres, e.g. of annular or tubular shape; girdles, e.g. with high waist part, with open bottom, or girdles of panty type, e.g. with elongated thigh part with or without suspenders.

Brassieres being a type of undergarments for supporting or shaping breasts having connected or separate cups including strapless, backless brassieres, e.g. self-adhesive bra cups, or brassieres with stiffening or bust-forming inserts, e.g. with pads containing gel or foam filling, with pockets; bra specially adapted for nursing mothers, e.g. fold-down convertible bra or with replaceable absorbing pads or cups; bra cups with massage elements.

Details of corsets, girdles or brassieres relating to materials used in making process thereof, e.g. elastic corsets including corsets made of rubber, or of layered materials; special materials for nursing mother brassieres or brassieres for sport activities.

Machines or appliances for manufacturing corsets or brassieres, such as integrated manufacturing system or production lines including, e.g. cutting or sewing machines, ironing-machines, attachment mechanisms for assembling component parts, circular knitting machines, machines for molding cup-shaped parts.

Methods for manufacturing corsets or brassieres, mostly the combination of individual process steps such as mechanical treatment e. g. pattern cutting or sewing, physical treatment with the use of high temperature or pressure e.g. hot pressing forming die for a brassiere cup, thermoforming for shape retention or hardening of the articles, high temperature adhering and pressing process without sewing, ultrasonic adhering, antibacterial treatment, aromatizing or steeping by perfume, chemical methods for densification of the knitted stitches; methods of manufacturing one piece bra; finishing edges.

DATE: JANUARY 1, 2018

PROJECT RP0506

**Insert** the following new Relationships with other classification places:

### **Relationships with other classification places**

Group A41B 17/00 "Selection of special materials for underwear" is used not only with groups A41B 9/00 "Undergarments" or A41B 13/00 "Baby linen" but it should also be used together with groups A41C 1/00 and A41C 3/00 if the material of articles is of interest.

Manufacturing of corsets, girdles or bras is classified in group A41C 5/00 "Machines, appliances, or methods for manufacturing corsets or brassieres". However provided that a subject of the invention concerns also an individual step of the combined method or an individual machine of the aggregated plant such information can be separately classified in the appropriate places of the CPC in section B or section D, e.g. in groups: B32B 37/00 Methods or apparatus for laminating, e.g. by curing or by ultrasonic bonding;

B29C 51/00 Shaping by thermoforming, e.g. shaping sheets in matched moulds or by deep-drawing; Apparatus therefor;

D04B 1/24 Weft knitting processes for the production of fabrics or articles not dependent on the use of particular machines; Fabrics or articles defined by such processes specially adapted for wearing apparel;

D04B 21/14 Fabrics characterised by the incorporation by knitting, in one or more thread, fleece, or fabric layers, of reinforcing, binding, or decorative threads; Fabrics incorporating small auxiliary elements, e.g. for decorative purposes;

D06C 29/00 Finishing or dressing, of textile fabrics;

D06M 23/14 Processes for the fixation or treatment of textile materials in three-dimensional forms

D05C 7/00 Special-purpose or automatic embroidering machines

**Insert** the following new References section:

### **References**

#### **Application-oriented references**

*Examples of places where the subject matter of this place is covered when specially adapted, used for a particular purpose, or incorporated in a larger system:*

Non-implantable mammary prostheses	A61F 2/52
------------------------------------	-----------

DATE: JANUARY 1, 2018

PROJECT RP0506

Orthopaedic corsets	A61F 5/02
Nursing devices in the form of corsets or bandages for abdomen, teat, or breast support, with or without pads	A61F 5/03
Bandages specially adapted for breast or abdomen	A61F 13/14
Absorbent pads for external application to the body	A61F 13/15

### Informative references

*Attention is drawn to the following places, which may be of interest for search:*

Combined undergarment	A41B 9/08
Waistbands forming part of the undergarments	A41B 9/14
Shoulder-straps forming part of undergarments	A41B 9/16
Maternity clothing	A41D 1/21
Clothing specially adapted for women	A41D 1/22
Swim-suits, beach suits	A41D 7/00
Corset fasteners	A41F 1/04
Shoulder or like straps in general	A41F 15/00

**Insert** the following new Glossary of terms:

### Glossary of terms

*In this place, the following terms or expressions are used with the meaning indicated:*

Corset	(n) tight-fitting undergarments often reinforced by stays, worn to support and shape the waistline, hips, and breasts.
Girdle	(n) a woman's corset extending from waist to thigh
Stay	(n) a flat strip of steel, plastic, etc., used especially for stiffening corsets, collars, etc. (in.pl.) hist. a corset esp. with whalebone etc. stiffening, and laced
Steel	(n) a steel stiffener in a corset, etc.

**Insert** the following new Synonyms and Keywords:

DATE: JANUARY 1, 2018

PROJECT RP0506

## Synonyms and Keywords

*In patent documents the following abbreviations are often used:*

Bra	Brassiere
-----	-----------

*In patent documents, the following words/expressions are often used as synonyms:*

- Girdle, Stays, Corset

*In patent documents, the word/expression in the first column is often used instead of the word/expression in the second column, which is used in the classification scheme of this place:*

Foundation garment	Bra
--------------------	-----



## 2. A. DEFINITIONS (modified)

### A41D 1/00

#### Garments (for children A41D 11/00)

##### Definition statement

*This place covers:*

**Insert** the following new line **above** “Illustrative examples of subject matter classified in this group” in the Definition statement:

Also covers costumes and religious outfits.

**Delete** the current image US2003177562 – (A1 B2) Weather and climate adaptive Halloween costume.

**Insert** the following new image:



DATE: JANUARY 1, 2018

PROJECT RP0506

**Delete** the current image US4912780 – Combined shirt and religious garment.

**Insert** the following new image:



**Delete** the existing Special rules of classification.

## 2. A. DEFINITIONS (modified)

### A41D 1/002

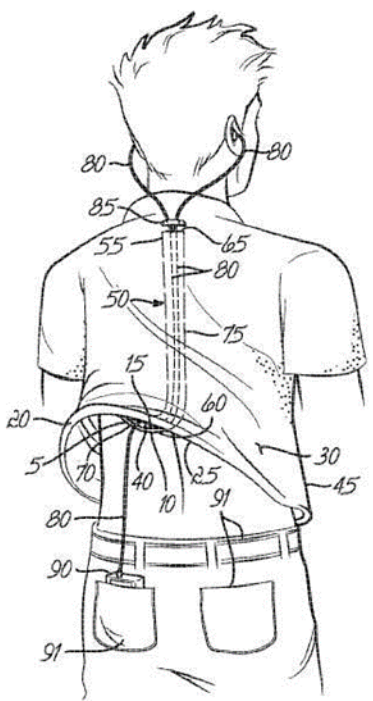
{adapted to accommodate electronic equipment (patients' garments for medical monitoring A41D 13/1281; luminous ornaments A41D 27/085)}

#### Definition statement

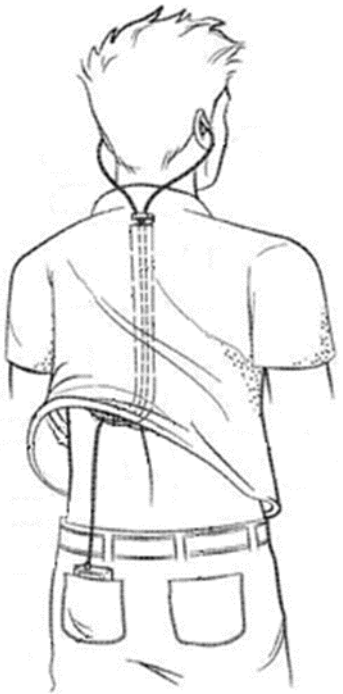
*This place covers:*

Illustrative example of subject matter classified in this group.

**Delete** the following numbered image:



**Replace** with the following image:



## References

### Informative references

**Replace** the **seventh row** of the Informative references table with the following:

Conductors dispersed in non-conductive materials	H01B 1/20
--	-----------

**Replace** the existing Special rules of classification with the following:

### Special rules of classification

CPC NOTICE OF CHANGES 490

DATE: JANUARY 1, 2018

PROJECT RP0506

When the subject is focused mainly on electronic equipment classify in this group as "additional information" only, and consider main classification in the relevant field. For pockets adapted to receive electronic equipment consider classification in A41D 27/205.

## 2. A. DEFINITIONS (modified)

### A41D 1/007

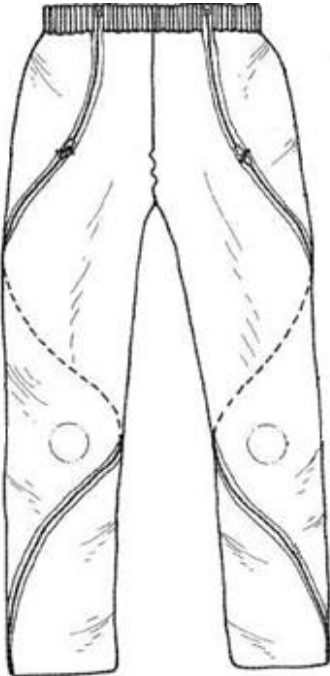
{made by a helically or spirally wound material}

#### Definition statement

*This place covers:*

Illustrative example of subject matter classified in this group.

**Replace** the existing image with the following:



## 2. A. DEFINITIONS (modified)

### A41D 1/04

Vests, jerseys, sweaters, or the like

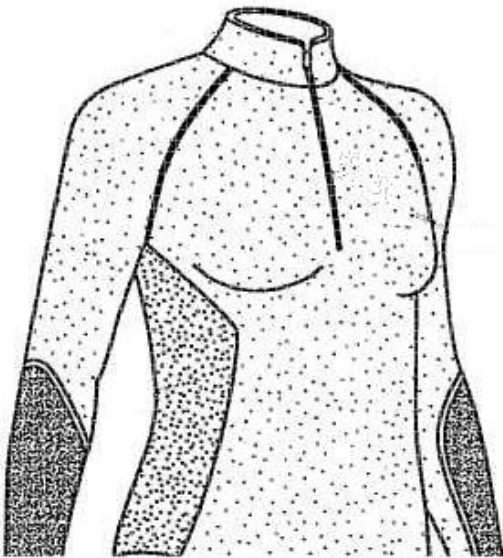
#### Definition statement

*This place covers:*

Illustrative examples of subject matter classified in this group.

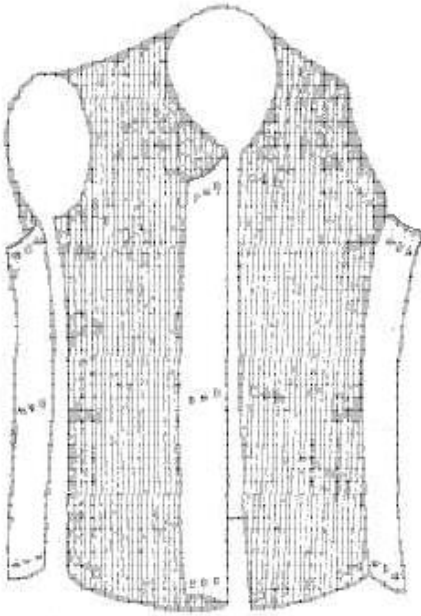
**Delete** the current image WO2009018293 – Articles of base layer apparel including zones having different thermal properties.

**Insert** the following new image:



**Delete** the current image FIG.2.

**Insert** the following new image:



**Delete** the Special rules of classification section.



## 2. A. DEFINITIONS (modified)

### A41D 1/06

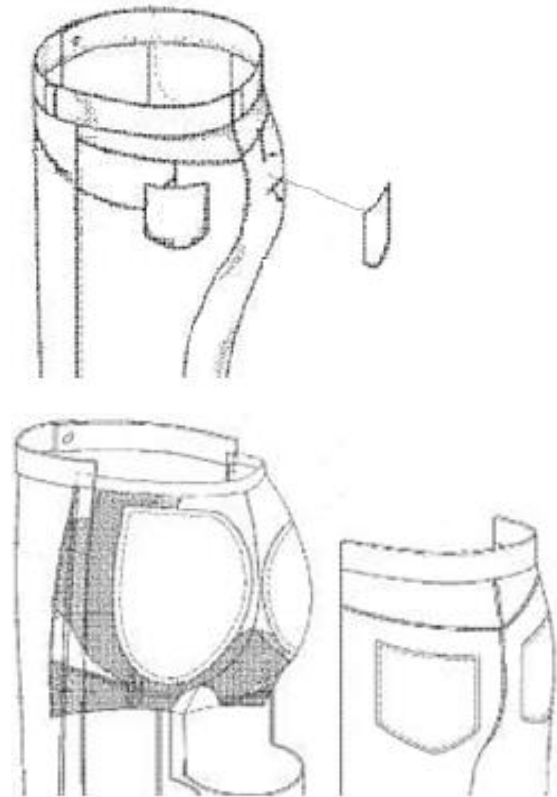
#### Trousers

##### Definition statement

**Insert** the following new line **above** “Illustrative examples of subject matter classified in this group” in the Definition statement:

Also covers details of trouser cuffs.

**Delete** the existing numbered images and **replace** with the following:



CPC NOTICE OF CHANGES 490

DATE: JANUARY 1, 2018

PROJECT RP0506

**Delete** the first line of the Special rules of classification:

Comprises details of trouser cuffs.

## 2. A. DEFINITIONS (modified)

### A41D 1/08

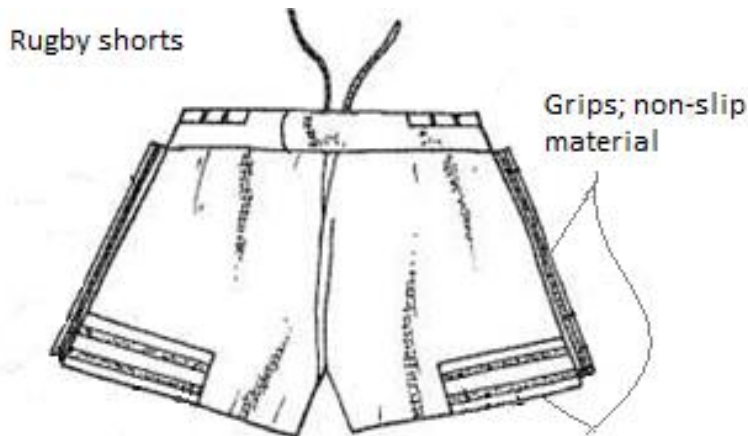
for sporting purposes

#### Definition statement

*This place covers:*

Illustrative example of subject matter classified in this group.

**Delete** the existing numbered image and **replace** with the following:



**Delete** the existing Special rules of classification and **replace** with the following:

#### Special rules of classification

For underwear panti-hose classify in A41B 11/14 and subgroups.

For sportive tights classify in A41D 1/08 and subgroups.

For sportive garments with embedded elastic bands but no compression, classify in A41D 13/0015.

CPC NOTICE OF CHANGES 490

DATE: JANUARY 1, 2018

PROJECT RP0506

For compression tights, elastic trousers with curative purposes consider classification in A61F 13/08.

## 2. A. DEFINITIONS (modified)

### A41D 1/082

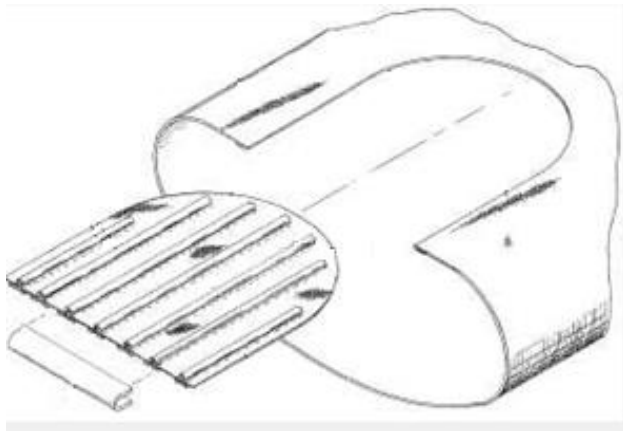
for skiing

#### Definition statement

*This place covers:*

Illustrative examples of subject matter classified in this group.

**Replace** the existing numbered image with the following:





## 2. A. DEFINITIONS (modified)

### A41D 1/088

{Crotch reinforcement}

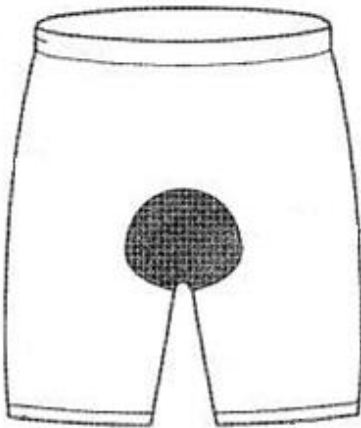
#### Definition statement

*This place covers:*

**Insert** the following new line **above** “Illustrative examples of subject matter classified in this group” in the Definition statement:

Comprises sports trousers with crotch area reinforcements, i.e. garment protection.  
Illustrative example of subject matter classified in this group.

**Replace** the existing image with the following:



**Delete** the Limiting references section.

**Insert** new Informative references section:

#### Informative references

DATE: JANUARY 1, 2018

PROJECT RP0506

*Attention is drawn to the following places, which may be of interest for search:*

Cycling trousers (with saddle reinforcements and padding)	A41D 1/084
Buttocks protection in sports trousers not for cycling and not at crotch area	A41D 13/0537
Protectors for clothing, not in crotch area of sports trousers	A41D 27/12

**Replace** the existing Special rules of classification section with the following:

### **Special rules of classification**

When reinforcements are used as interface between body and cycling saddle, e.g. for impact or pressure reduction, or for saddle shaped reinforcements, even if the word "cycling" is not used, classify only in A41D 1/084, and not in A41D 1/088. For all other crotch area reinforcements in sports trousers e.g. garment protection, classify only in A41D 1/088.

For buttocks protection in sports trousers not for cycling and not at crotch area, classify in A41D 13/0537.

For clothing protection, i.e. patches avoiding wear and tear, not in crotch area of sports trousers, classify in A41D 27/12.



## 2. A. DEFINITIONS (modified)

### A41D 1/10

Means for maintaining the crease

#### Definition statement

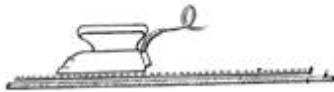
*This place covers:*

Illustrative examples of subject matter classified in this group.

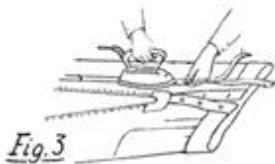
**Replace** the existing two images with the following:



*Fig. 1*



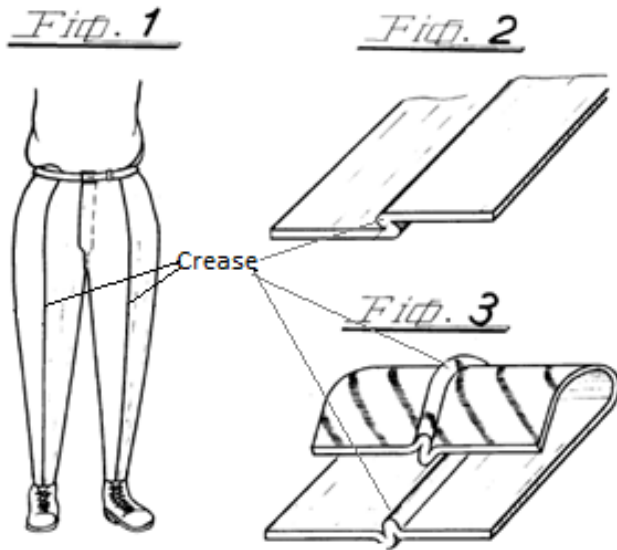
*Fig. 2*



*Fig. 3*



*Fig. 4*



## Glossary of terms

*In this place, the following terms or expressions are used with the meaning indicated:*

**Replace** the existing table with the following:

Crease	the line or mark produced on the surface of anything by folding; a furrow in a surface, such as is caused by folding; a fold, wrinkle, ridge, specifically in trousers.
--------	---

## 2. A. DEFINITIONS (modified)

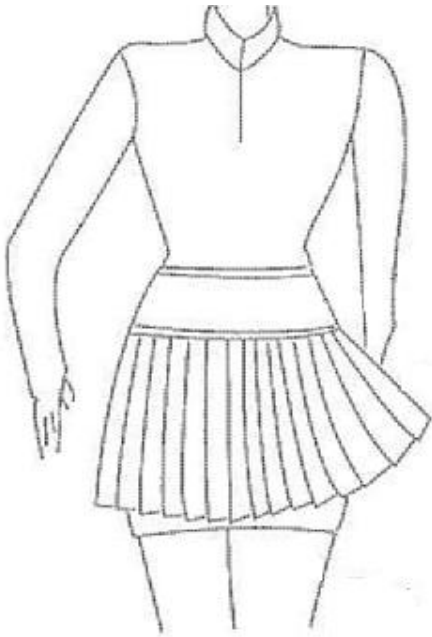
### A41D 1/14

#### Skirts

#### Definition statement

Illustrative example of subject matter classified in this group.

**Replace** the existing image with the following:



## 2. A. DEFINITIONS (modified)

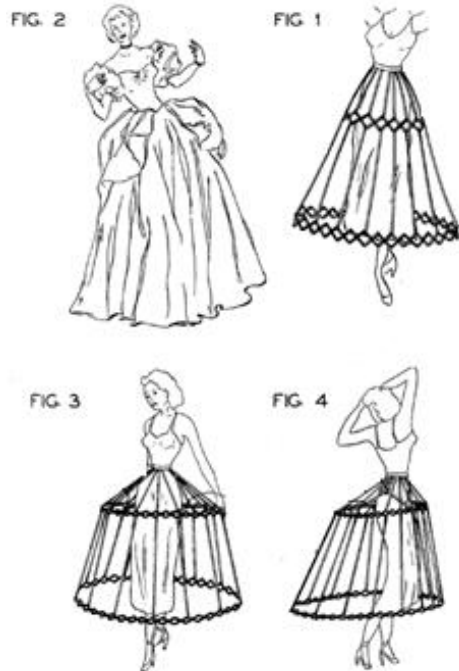
### A41D 1/16

#### Hooped skirts; Crinolines

##### Definition statement

Illustrative example of subject matter classified in this group.

**Replace** the existing image with the following:



## 2. A. DEFINITIONS (modified)

### A41D 1/18

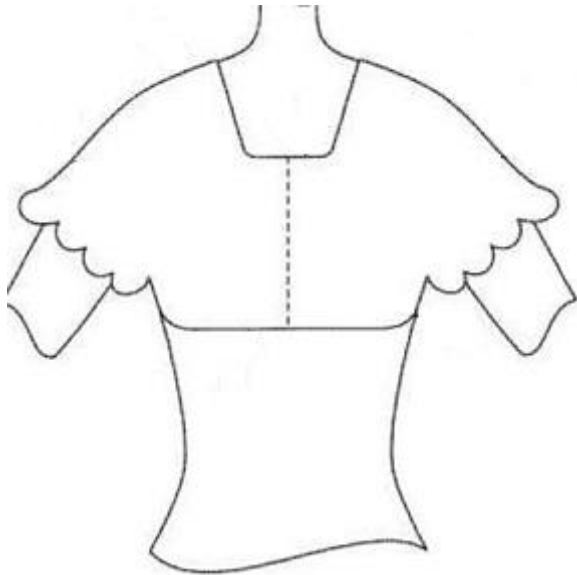
#### Blouses

#### Definition statement

*This place covers:*

Illustrative examples of subject matter classified in this group.

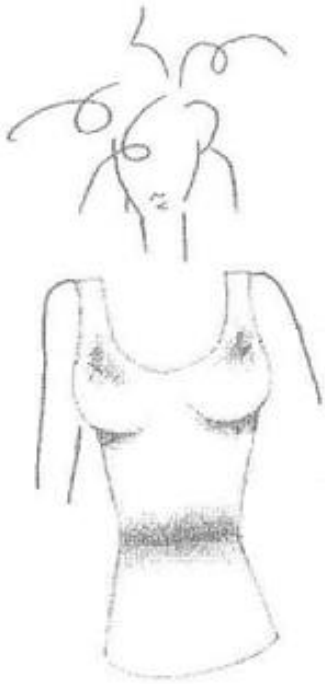
**Replace** the existing two images with the following:



CPC NOTICE OF CHANGES 490

DATE: JANUARY 1, 2018

PROJECT RP0506



## 2. A. DEFINITIONS (new)

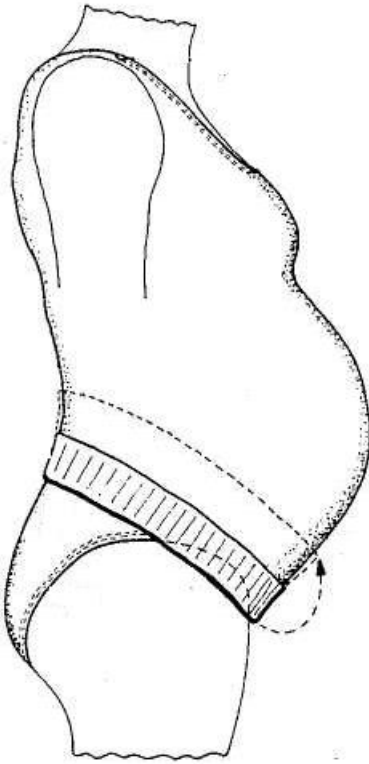
### A41D 1/21

Maternity clothing; Clothing specially adapted for persons caring for infants.

#### Definition statement

*This place covers:*

Illustrative examples of subject matter classified in this group.



#### References

#### Informative references

*Attention is drawn to the following places, which may be of interest for search:*

CPC NOTICE OF CHANGES 490

DATE: JANUARY 1, 2018

PROJECT RP0506

Maternity corsets
-------------------

A41C 1/10
-----------



## 2. A. DEFINITIONS (new)

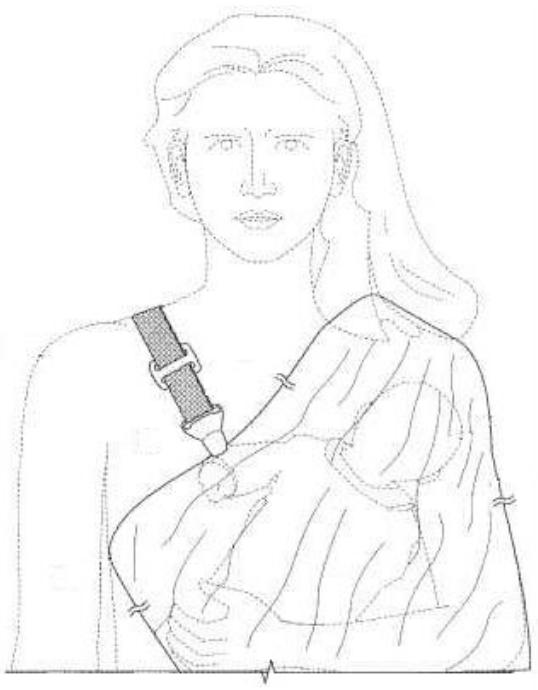
### A41D1/215

#### Nursing clothing, e.g. for breastfeeding

##### Definition statement

*This place covers:*

Illustrative example of subject matter classified in this group.



Comprises also other clothes worn by infant carer, i.e. stimulating baby

CPC NOTICE OF CHANGES 490

DATE: JANUARY 1, 2018

PROJECT RP0506

**Informative references**

*Attention is drawn to the following places, which may be of interest for search:*

Infant toys	A63H 33/006
Educational appliances	G09B 1/00
Baby-carriers	A47D 13/025

## 2. A. DEFINITIONS (modified)

### A41D 1/22

#### Definition statement

*This place covers:*

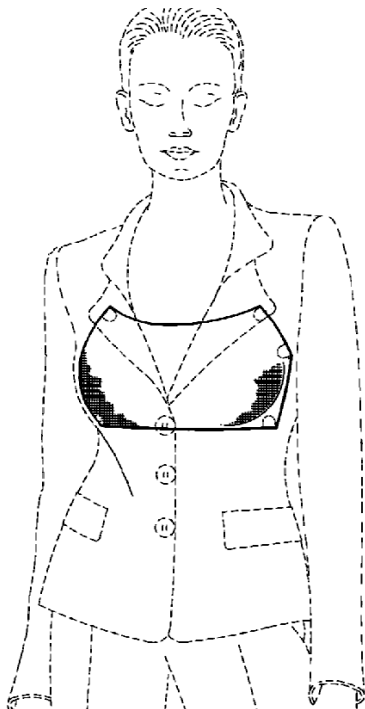
**Insert** the following new line **above** “Illustrative examples of subject matter classified in this group” in the Definition statement:

Comprises dresses and cleavage covers.

**Insert** the following image title:

Cleavage cover

**Replace** the existing two images with the following:



CPC NOTICE OF CHANGES 490

DATE: JANUARY 1, 2018

PROJECT RP0506



**Delete** the Special rules of classification section.

## CPC NOTICE OF CHANGES 490

DATE: JANUARY 1, 2018

PROJECT RP0506

## 2. B. DEFINITIONS QUICK FIX

<u>Symbol</u>	<u>Location of change</u> (e.g., section title)	<u>Existing reference symbol or text</u>	<u>Action; New symbol; New text</u>
A41D1/084	Limiting references	Sports pants with crotch reinforcement (not for cycling, i.e. garment protection) A41D 1/088  Buttocks protection in sports trousers not for cycling and not at crotch area A41D 13/0537	<b><u>Delete entire Limited references table</u></b>
A41D1/084	Informative references		<b><u>Create new Informative references table</u></b> Sports pants with crotch reinforcement (not for cycling, i.e. garment protection) A41D 1/088  Buttocks protection in sports trousers not for cycling and not at crotch area A41D 13/0537
A41D1/20	Delete all		<b><u>Delete all</u></b>
A41D1/205	Delete all		<b><u>Delete all</u></b>

## NOTES:

- The table above is used for corrections or modifications to existing definitions, e.g. delete an entire definition or part thereof; propose new wording or modify wording of a section, change the symbol the definition is associated with, change or delete a reference symbol, etc.
- Do not delete (F) symbol definitions.

CPC NOTICE OF CHANGES 490

DATE: JANUARY 1, 2018

PROJECT RP0506

3. REVISION CONCORDANCE LIST (RCL)

<u>Type*</u>	<u>From CPC Symbol</u>	<u>To CPC Symbol(s)</u>
C	A41D 1/08	A41D 1/08, A41D 1/085, A41D 1/089
D	A41D 1/20	<Administrative transfer to A41D 1/21>
D	A41D 1/205	<Administrative transfer to A41D 1/215>

\* Type:

- C = existing group, which serves as source for reclassification, e.g. because of modified file scope;
- D = deleted group;
- F = existing group, serving as source for reclassification, which is blocked (“frozen”) from being used for classification of new documents (front-file) and will be deleted once reclassification is completed (i.e. with deferred deletion);
- Q = new group, serving as source for reclassification as well, which is first populated with documents via administrative transfers from deleted (D) entries; afterwards, the documents which were transferred into the Q group will either stay or be moved to more appropriate group, as determined by intellectual reclassification. It is a quite specific situation, which mostly occurs only when implementing IPC-related projects.

Notes:

- Only C, D, F, and Q type groups can be included as “source” (“From” column) in the table above.
- All destination symbols should be explicitly listed in the “To” column. Do not use ranges of symbols.
- In certain situations, the D for 2000-series or Y-series groups may not require a destination (“To”) symbol, however this should be indicated with “[no transfers]”.
- For administrative transfer of documents, the following text should be used: “<administrative transfer to XX>” or “<administrative transfer to XX and YY simultaneously>” when administrative transfer of the same documents is to more than one place.
- Administrative transfer to main-trunk groups is assumed to be the source classification value, unless otherwise indicated
- Administrative transfer to 2000-series or Y-series groups can only be “additional information”.

CPC NOTICE OF CHANGES 490

DATE: JANUARY 1, 2018

PROJECT RP0506

4. CHANGES TO THE CPC-TO-IPC CONCORDANCE LIST (CICL)

<u>CPC</u>	<u>IPC</u>	<u>Action*</u>
A41D 1/082	A41D 1/082	UPDATED
A41D 1/084	A41D 1/084	UPDATED
A41D 1/085	A41D 1/085	NEW
A41D 1/086	A41D 1/086	UPDATED
A41D 1/089	A41D 1/089	NEW
A41D 1/20		DELETE
A41D 1/205		DELETE
A41D 1/21	A41D 1/21	NEW
A41D 1/215	A41D 1/215	NEW

\*Action column:

- For an (N) or (Q) entry, provide an IPC symbol and complete the Action column with “NEW.”
- For an existing CPC main trunk entry or indexing entry where the existing IPC symbol needs to be changed, provide an updated IPC symbol and complete the Action column with “UPDATED.”
- For a (D) CPC entry or indexing entry complete the Action column with “DELETE.” IPC symbol does not need to be included in the IPC column.
- For an (N) 2000 series CPC entry which is positioned within the main trunk scheme (breakdown code) provide an IPC symbol and complete the action column with “NEW”.
- For an (N) 2000 series CPC entry positioned at the end of the CPC scheme (orthogonal code), with no IPC equivalent, complete the IPC column with “CPCONLY” and complete the action column with “NEW”.

NOTES:

- F symbols are not included in the CICL table above.
- E and M symbols are not included in the CICL table above unless a change to the existing IPC is desired.

CPC NOTICE OF CHANGES 490

DATE: JANUARY 1, 2018

PROJECT RP0506

5. CROSS-REFERENCE LIST (CRL)

Scheme references impacted by this revision project

<u>Location of reference to be changed</u>	<u>Referenced subclass or group to be changed</u>	<u>Action; New reference symbol; New text</u>
A41C 3/04	A41D 1/205	A41D 1/215

Definitions references impacted by this revision project

<u>Location of reference to be changed</u>	<u>Referenced subclass or group to be changed</u>	<u>Section of definition</u>	<u>Action; New reference symbol; New text</u>
A41C 1/10	A41D 1/20	Informative references	Modify symbol to: A41D 1/21
A41D 1/06	A41D 1/08	Special rules of classification	Modify text/symbol: For all types of shorts classify in A41D1/089

NOTES:

- The CRL tables above are used for changes to locations **outside** of the project scope. Changes to references in scheme titles or definitions **inside** the project scope will be reflected in the “scheme change” template or one of the “definition” templates.
- In addition to other changes proposed in the tables above, in the column titled “Referenced subclass or group to be changed,” **referenced** D symbols should indicate an action of “delete” or should indicate a replacement symbol and **referenced** F symbols should indicate a replacement symbol.
- When a reference is deleted, text related to that reference will also be deleted unless other references or a range of references associated with the same text remain.