

EUROPEAN PATENT OFFICE
U.S. PATENT AND TRADEMARK OFFICE

CPC NOTICE OF CHANGES 1777

DATE: AUGUST 1, 2025

PROJECT DP12702

The following classification changes will be effected by this Notice of Changes:

| <u>Action</u> | <u>Subclass</u> | <u>Group(s)</u> |
|--|-----------------|---|
| DEFINITIONS: | | |
| Definitions Deleted: (no frozen (F) symbol definitions should be deleted) | | |
| Definitions New: | A01G | 13/21, 13/23, 13/24, 13/27, 13/28, 13/35, 13/39 |
| | | |
| Definitions Modified: | A01G | 9/14 |
| | | 13/00, 13/10, 13/26 |

No other subclasses/groups are impacted by this Notice of Changes.

This Notice of Changes includes the following *[Check the ones included]*:

1. CLASSIFICATION SCHEME CHANGES

- ☐ A. New, Modified or Deleted Group(s)
- ☐ B. New, Modified or Deleted Warning(s)
- ☐ C. New, Modified or Deleted Note(s)
- ☐ D. New, Modified or Deleted Guidance Heading(s)

2. DEFINITIONS

- ☒ A. New or Modified Definitions (Full definition template)
- ☐ B. Modified or Deleted Definitions (Definitions Quick Fix)

- 3. ☐ REVISION CONCORDANCE LIST (RCL)
- 4. ☐ CHANGES TO THE CPC-TO-IPC CONCORDANCE LIST (CICL)
- 5. ☐ CHANGES TO THE CROSS-REFERENCE LIST (CRL)

DATE: AUGUST 1, 2025

PROJECT DP12702

2. A. DEFINITIONS (new)

A01G 13/21

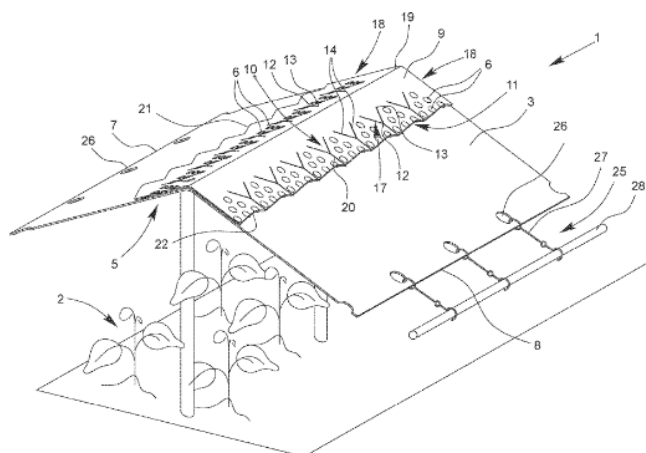
Definition statement

This place covers:

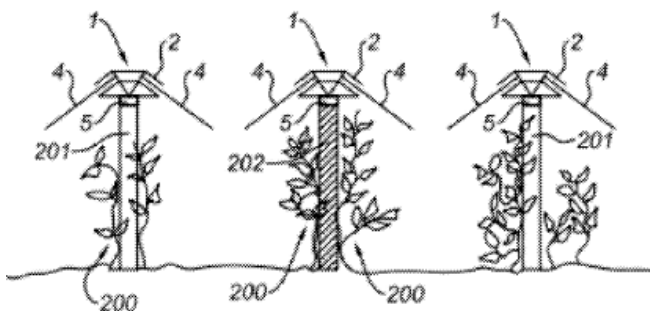
Coverings provided above the plant and supported without enclosing the plant.

Illustrative examples of the subject matter classified in this place:

1.



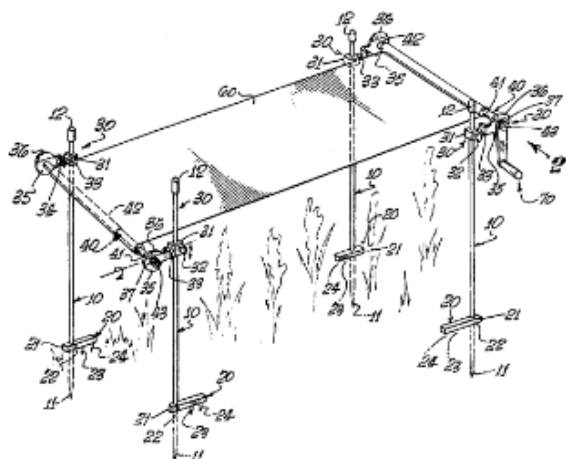
2.



DATE: AUGUST 1, 2025

PROJECT DP12702

3.



References

Informative references

Attention is drawn to the following places, which may be of interest for search:

| | |
|-------------------------------|----------------------------|
| Tents or canopies, in general | E04H 15/00 |
|-------------------------------|----------------------------|

A01G 13/23

Definition statement

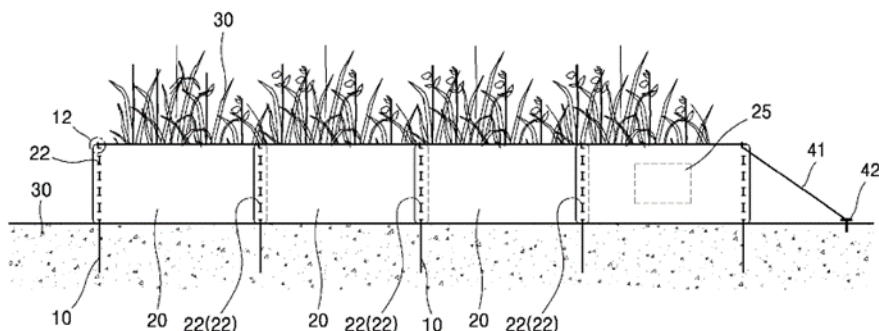
This place covers:

Illustrative example of subject matter classified in this place:

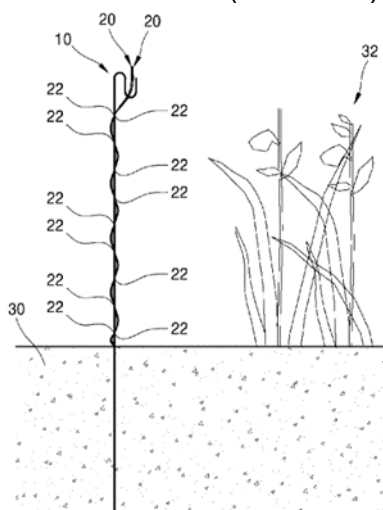
DATE: AUGUST 1, 2025

PROJECT DP12702

1a. Wind fence (front view)



1b. Wind fence (side view)

**A01G 13/24****Definition statement***This place covers:*

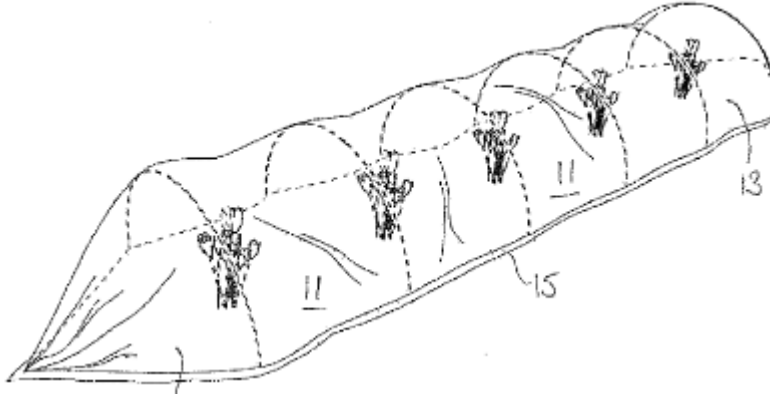
Tunnel-like covers for extending over rows of plants, most often a single row. The covers can allow or prevent light from passing through. The heights of the covers are generally close to the height of the plants they are protecting.

Illustrative examples of the subject matter classified in this place:

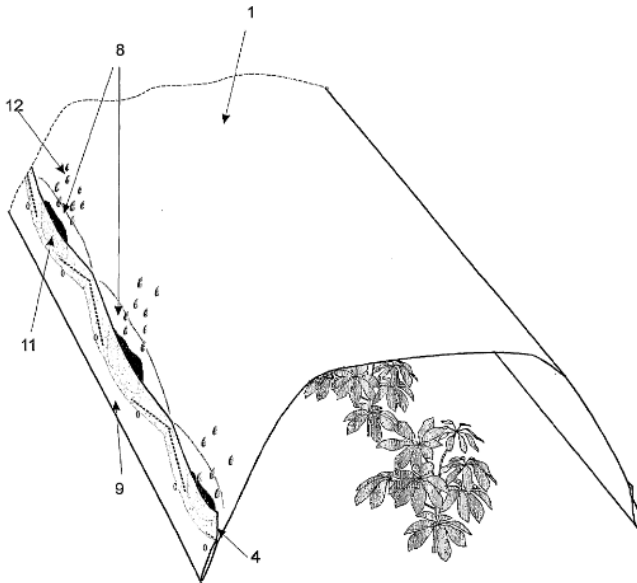
DATE: AUGUST 1, 2025

PROJECT DP12702

1.



2.



Relationships with other classification places

Greenhouses can have the same rounded or semicircular shape as tunnels, but should be classified in group [A01G 9/14](#). Tunnels are specifically designed for covering a row or rows of plants, and the tunnel width required to cover only a single row or small number of rows generally results in a structure much closer in height to that of the plants being covered. Greenhouses, e.g. high tunnels, are constructed in a size allowing a person to enter, independent of the configuration or size of the plants within.

A01G 13/27

Definition statement

This place covers:

Protecting parts of plants including roots, stems, trunks, branches, leaves, flowers or fruit.

Illustrative examples of subject matter classified in this place:

1.

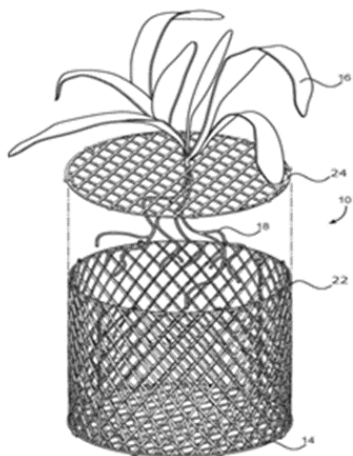


Figure 1 illustrates a protective barrier for plant roots.

2.

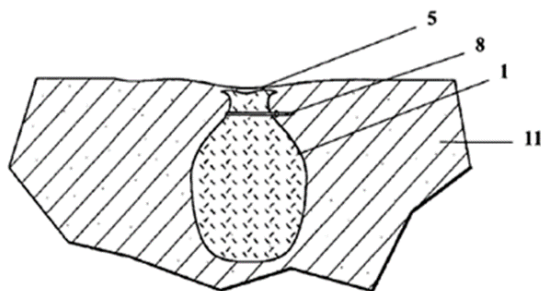
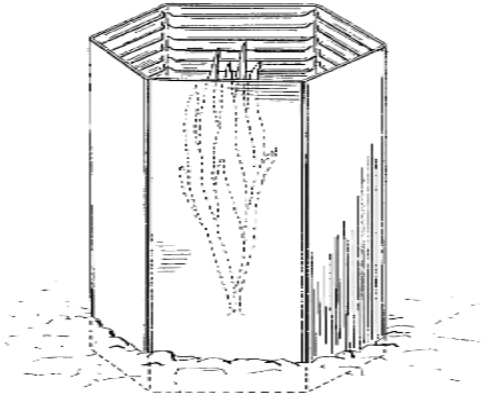


Figure 2 illustrates a protective liner for a plant root and bulb.

DATE: AUGUST 1, 2025

PROJECT DP12702



A01G 13/35

Definition statement

This place covers:

Physical characteristics of mulches provided in a loose form to be spread over the ground, e.g. bark chips or shredded wood, mechanical aspects of making or treating mulch and methods of mulching plants.

Illustrative examples of subject matter classified in this place:

1.

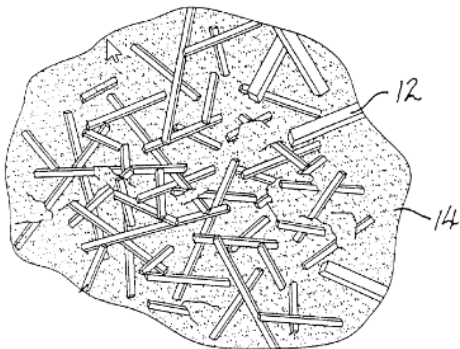


Figure 1 illustrates a mulch product (12) characterized by its physical properties of shape, dimension, length and material on soil (14).

DATE: AUGUST 1, 2025

PROJECT DP12702

2.

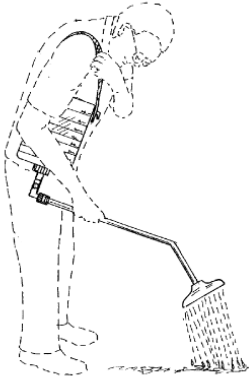


Figure 2 illustrates a method of treating mulch by applying an adhesive to prevent undesired movement of the mulch.

Relationships with other classification places

This place covers physical and mechanical aspects of mulch. Chemical compositions of mulches and formulations thereof are found in group [C09K 17/52](#).

A01G 13/39

Definition statement

This place covers:

Arrangements for forming perforations or holes in ground coverings, e.g. by cutting, punching, blanching, hooking or heating, after laying out the coverings on the ground.

Illustrative examples of subject matter classified in this place:

DATE: AUGUST 1, 2025

PROJECT DP12702

1.

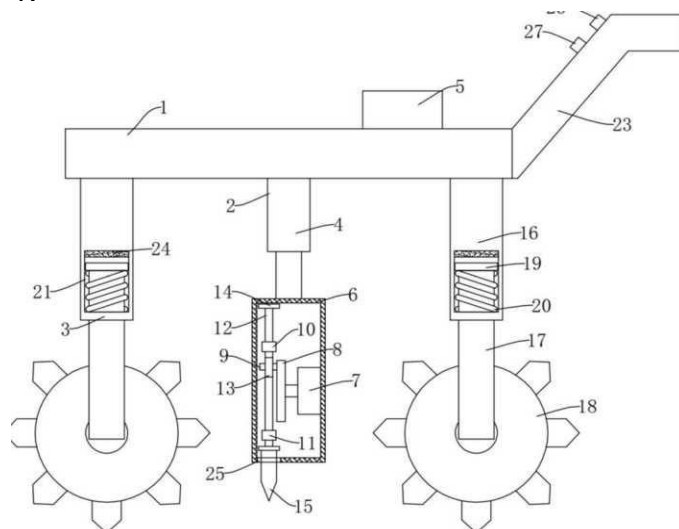


Figure 1 illustrates a pointed member (15) for piercing a ground covering.

2.

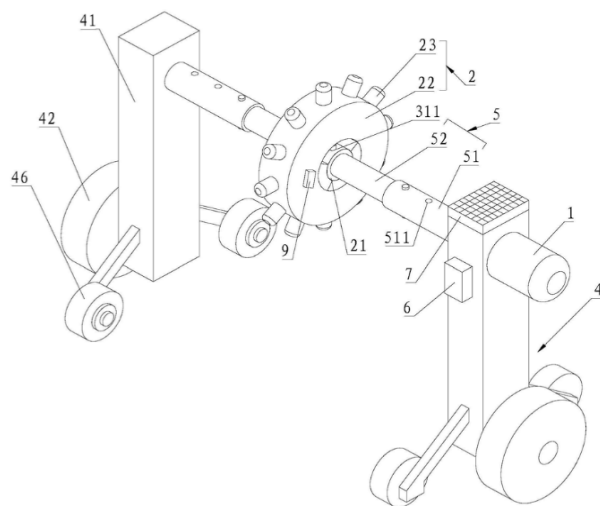


Figure 2 illustrates a heat generating component (23) for burning perforations in a ground covering.

CPC NOTICE OF CHANGES 1777

DATE: AUGUST 1, 2025

PROJECT DP12702

References

Informative references

Attention is drawn to the following places, which may be of interest for search:

| | |
|--|---------------------------|
| Machines for making or covering holes for sowing or planting | A01C 5/04 |
| Perforating non-metallic material | B26F |

DATE: AUGUST 1, 2025

PROJECT DP12702

2. A. DEFINITIONS (modified)

A01G 9/14

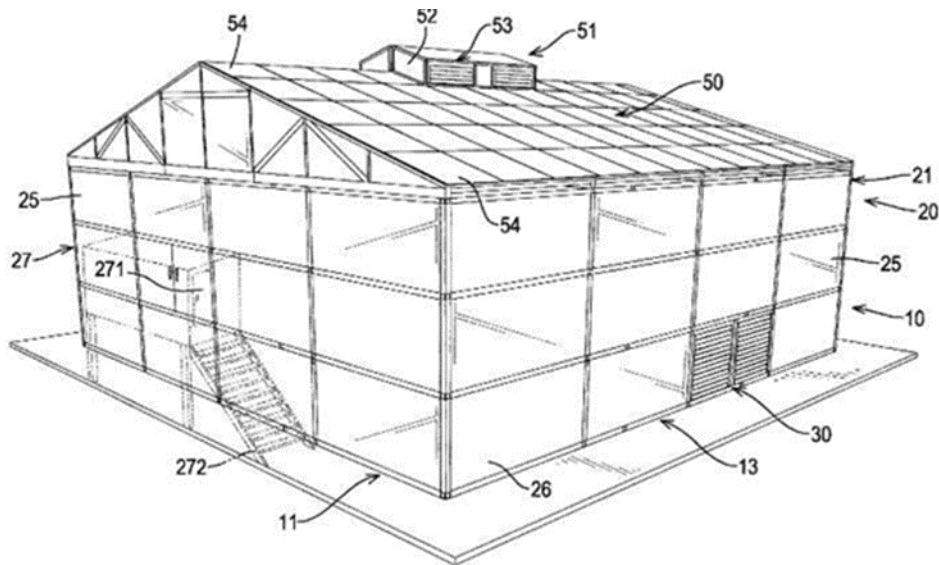
Insert: The following new Definition statement.

Definition statement

This place covers:

Enclosed structures providing a regulated, e.g. warmer or plant-growing environment. The structures are constructed with transparent or translucent roofs and walls to allow solar radiation to pass through and warm the interior and enclosed to prevent warmed air from escaping.

Illustrative example of subject matter classified in this place:



DATE: AUGUST 1, 2025

PROJECT DP12702

Insert: The following new Relationships section.

Relationships with other classification places

The following structures also create warmer plant-growing environments by allowing solar radiation to pass at least through transparent or translucent roofs, but have other classification places:

- Forcing-frames for the growth of seeds or young plants outside of their natural growing season are classified in group [A01G 9/20](#). Forcing-frames are generally smaller in construction than greenhouses due to only accommodating seeds or young plants.
- Environmental control chambers for regulating the environment within greenhouses are classified in group [A01G 9/24](#).
- Tunnels for extending over rows of plants, most often a single row, are classified in group [A01G 13/24](#). Tunnels can be constructed with a material like polyethylene that warms the interior and prevents damage from cold or frost. The heights of the tunnels are generally close to the heights of the plants they are protecting.
- Cloches for enclosing a single plant or a small group of plants are classified in group [A01G 13/26](#). The heights of the cloches are generally close to the heights of the plants they are protecting.

A01G 13/00

Replace: The existing Definition statement with the following updated statement.

Definition statement

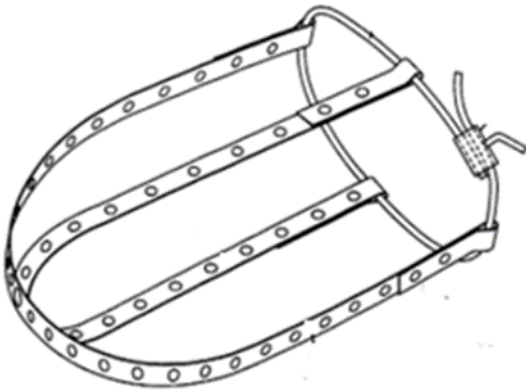
This place covers:

The protection of plants through the use of physical or mechanical arrangements.

Illustrative example of subject matter classified in this place:

DATE: AUGUST 1, 2025

PROJECT DP12702



The Figure illustrates an anti-theft device to prevent stealing of plants.

A01G13/10

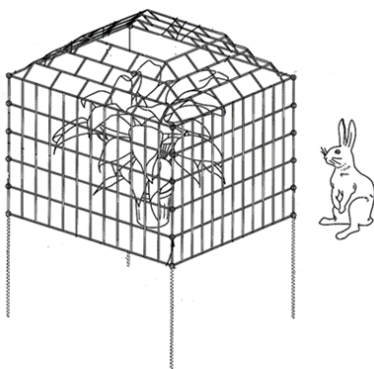
Insert: The following new Definition statement.

Definition statement

This place covers:

Illustrative examples of subject matter classified in this place:

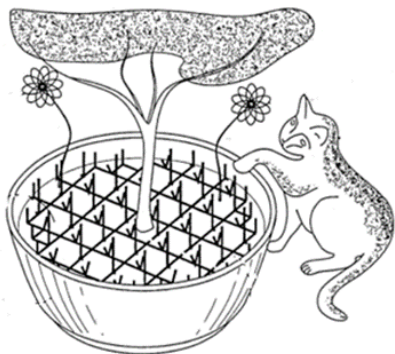
1.



DATE: AUGUST 1, 2025

PROJECT DP12702

2.



A01G13/26

Insert: The following new Definition statement.

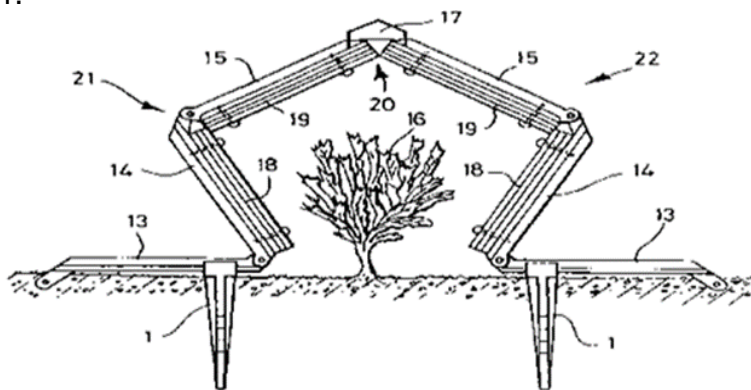
Definition statement

This place covers:

Protective covers enclosing a single plant or a small group of plants that can be set over the plant(s).

Illustrative examples of subject matter classified in this place:

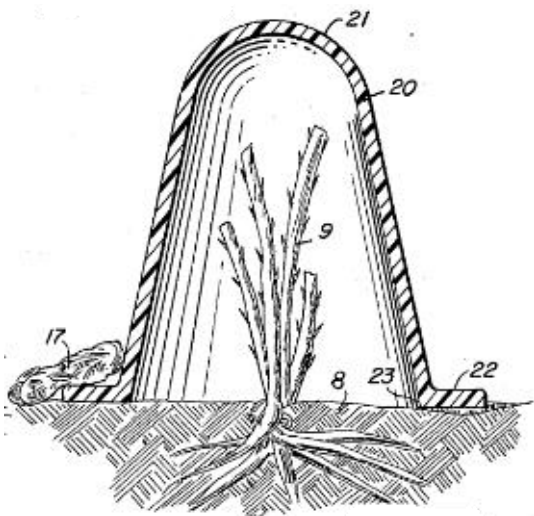
1.



DATE: AUGUST 1, 2025

PROJECT DP12702

2.



References

Insert: The following new reference in the Informative references table.

Informative references

Attention is drawn to the following places, which may be of interest for search:

| | |
|--------------------------------------|---------------------------|
| Dismountable or portable greenhouses | A01G 9/16 |
|--------------------------------------|---------------------------|