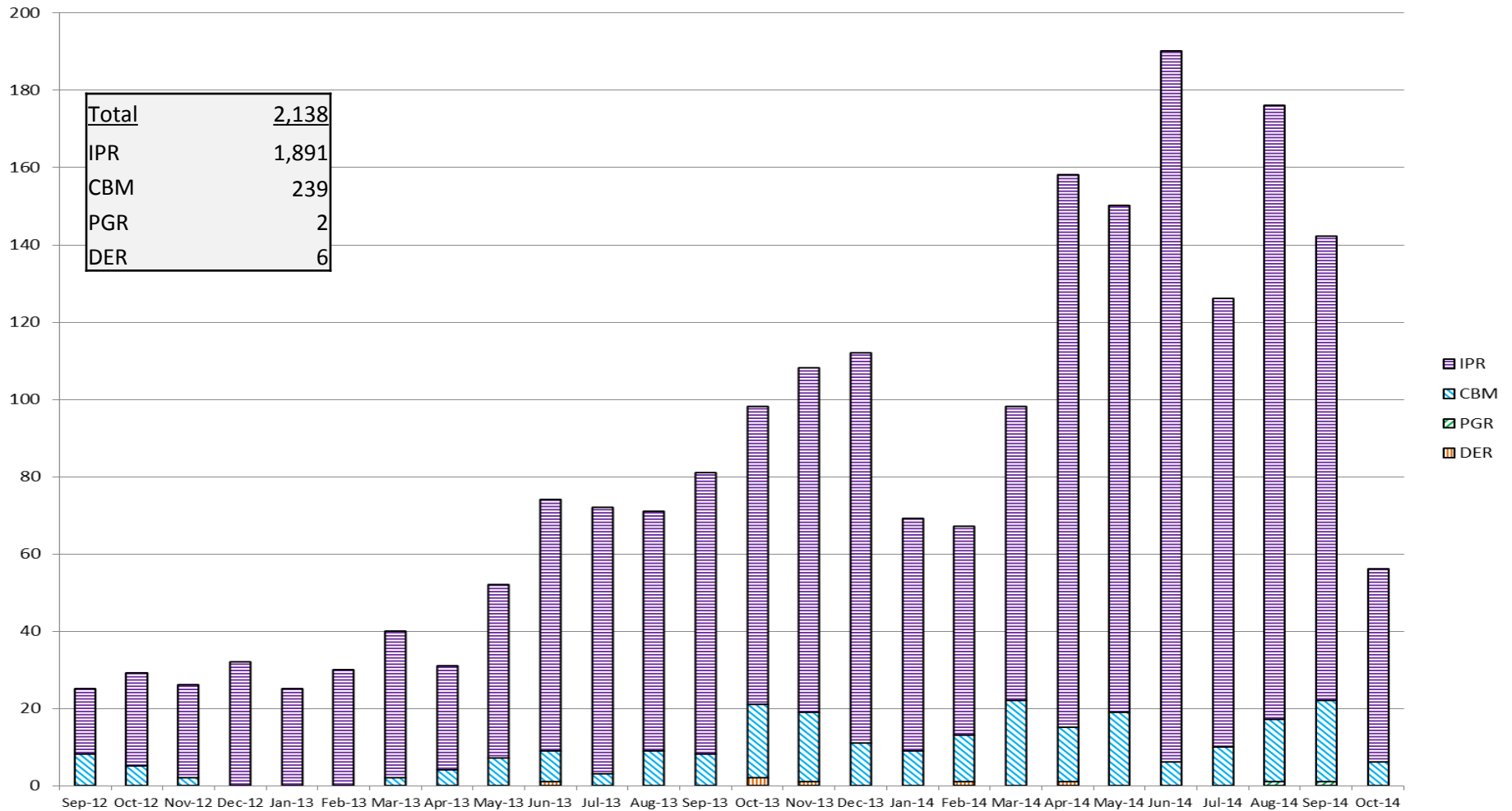




# AIA Progress (as of October 9, 2014)

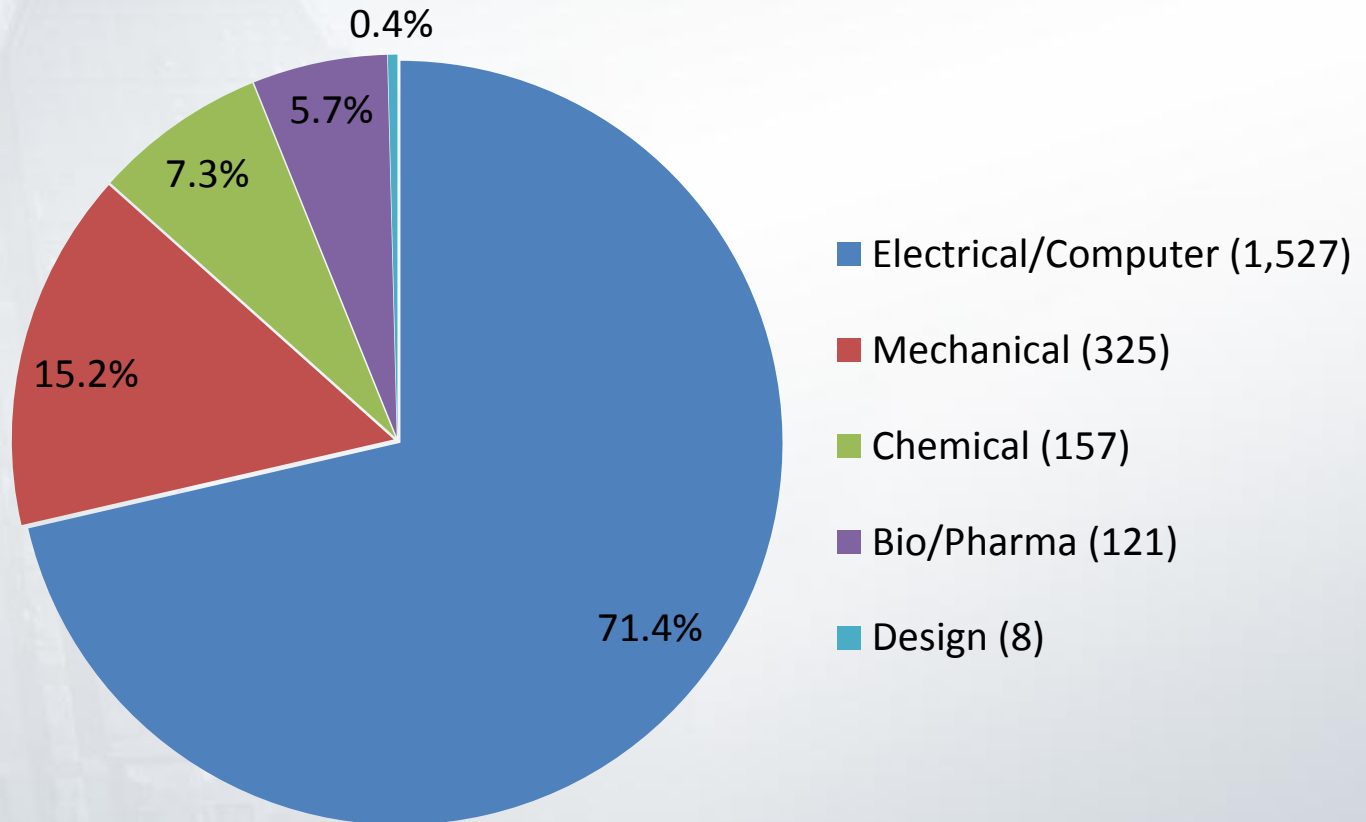
- AIA Monthly Filings





# AIA Progress (as of October 9, 2014)

- AIA Petition Technology Breakdown





# AIA Progress (as of October 9, 2014)

- Cumulative Patent Owner Preliminary Responses

|            | <b>Filed</b> | <b>Waived</b> |
|------------|--------------|---------------|
| <b>IPR</b> | 1,113        | 267           |
| <b>CBM</b> | 149          | 20            |



# AIA Progress (as of October 9, 2014)

- AIA Petition Dispositions

|            |      | Trials Instituted | Joinders | Percent Instituted | Denials | Total No. of Decisions on Institution |
|------------|------|-------------------|----------|--------------------|---------|---------------------------------------|
| <b>IPR</b> | FY13 | 167               | 10+      | 87%                | 26      | 203                                   |
|            | FY14 | 557               | 15+      | 75%                | 193     | 765                                   |
|            | FY15 | 17                | 9+       | 84%                | 5       | 31                                    |
| <b>CBM</b> | FY13 | 14                | -        | 82%                | 3       | 17                                    |
|            | FY14 | 77                | 1+       | 75%                | 26      | 104                                   |
|            | FY15 | 3                 | -        | 75%                | 1       | 4                                     |
| <b>DER</b> | FY14 | -                 | -        | 0%                 | 3       | 3                                     |



# AIA Progress (as of October 9, 2014)

- AIA Final Dispositions

|            |      | Settlements | Adverse Judgments | Final Written Decisions |
|------------|------|-------------|-------------------|-------------------------|
| <b>IPR</b> | FY13 | 38          | 2                 | 0                       |
|            | FY14 | 210         | 39                | 130                     |
|            | FY15 | 3           | 1                 | 3                       |
| <b>CBM</b> | FY13 | 3           | 0                 | 1                       |
|            | FY14 | 27          | 3                 | 13                      |
|            | FY15 | -           | -                 | 2                       |