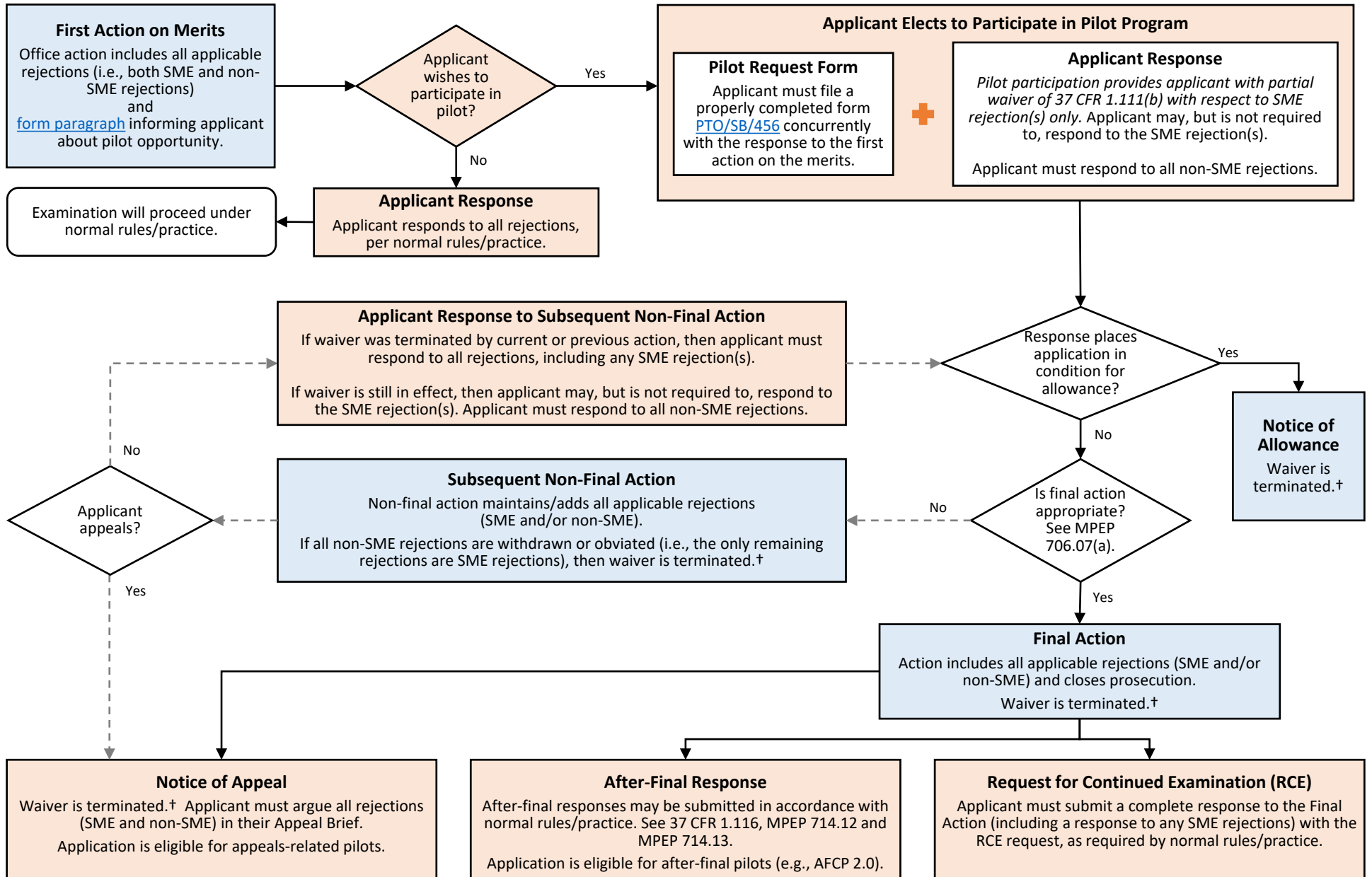


Typical process flow for DSMER Pilot Program (applicant perspective)



† The waiver is terminated by a “final disposition”, or by the withdrawal or obviation of all other (non-SME) outstanding rejections. See Section III.A. of the pilot program [Notice](#) for more information about “final dispositions” and the waiver. Once the waiver is terminated, examination proceeds under normal rules/practice.

2022-01-28

Solid line (→) indicates typical process flow. Dashed line (- ->) indicates alternative flow that may occur for some applications. Although not shown here, applicant may also choose to abandon the application before or after final action, and to file continuing applications, in accordance with normal rules/practice.