

**UNITED STATES  
PATENT AND TRADEMARK OFFICE**





# Appeal and Interference Statistics

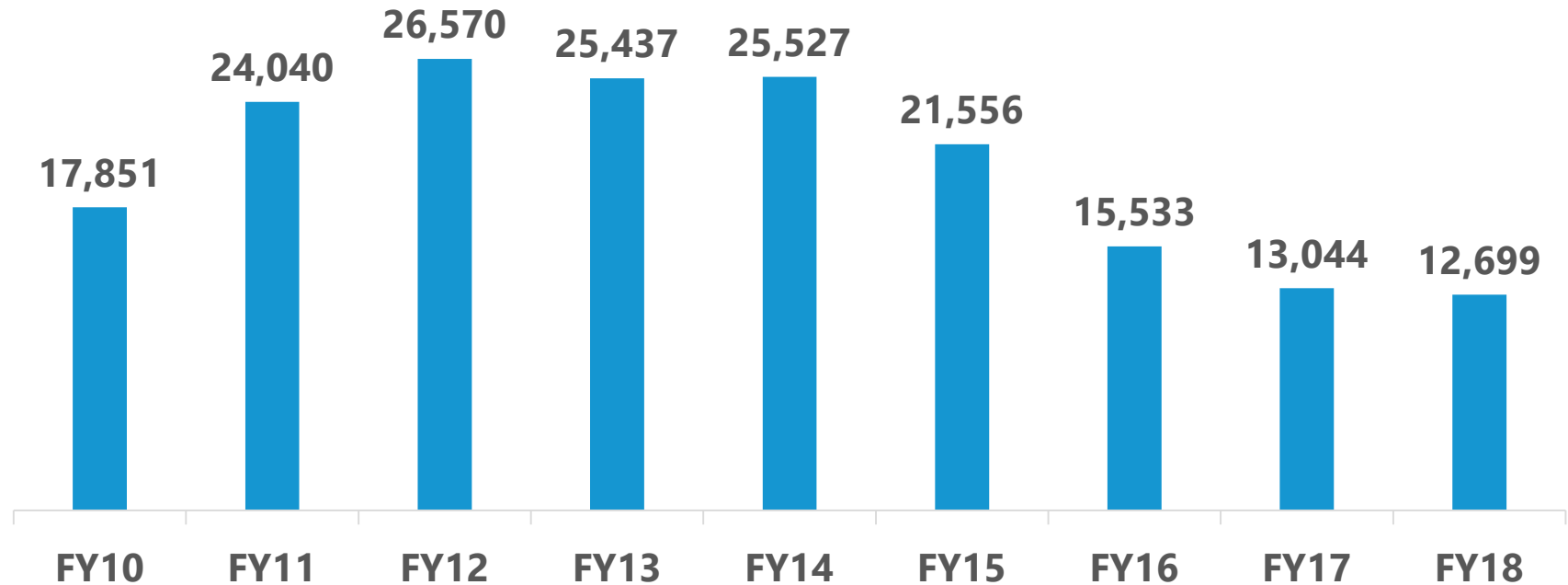
Patent Trial and Appeal Board  
December 2017

UNITED STATES  
PATENT AND TRADEMARK OFFICE



# Pending Appeals

(FY10 to FY18: 9/30/10 to 12/31/17)

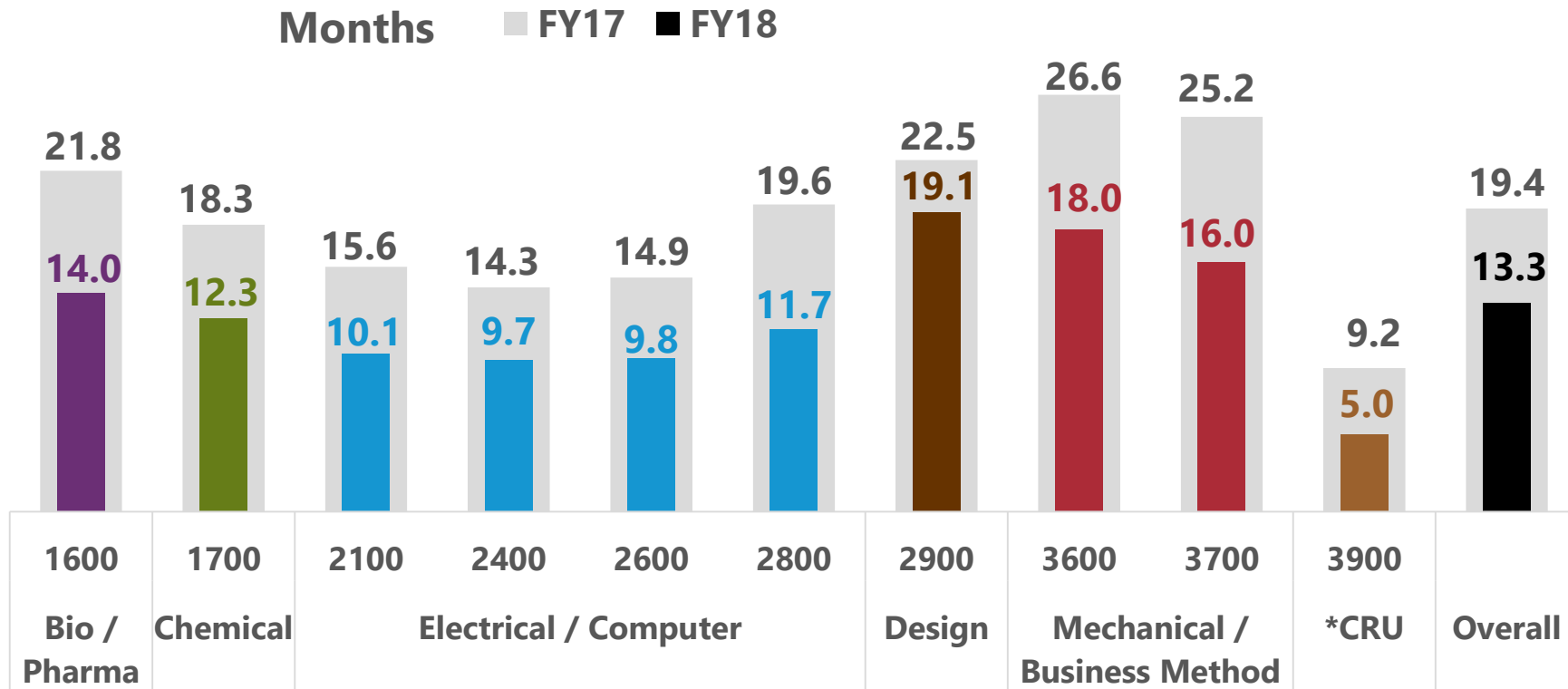


Note: FY17 pending changed from 13,034 to 13,044 due to an internal end of FY18 Q1 audit.



# Pendency of Decided Appeals in FY17 and FY18

(12/31/16 compared to 12/31/17)

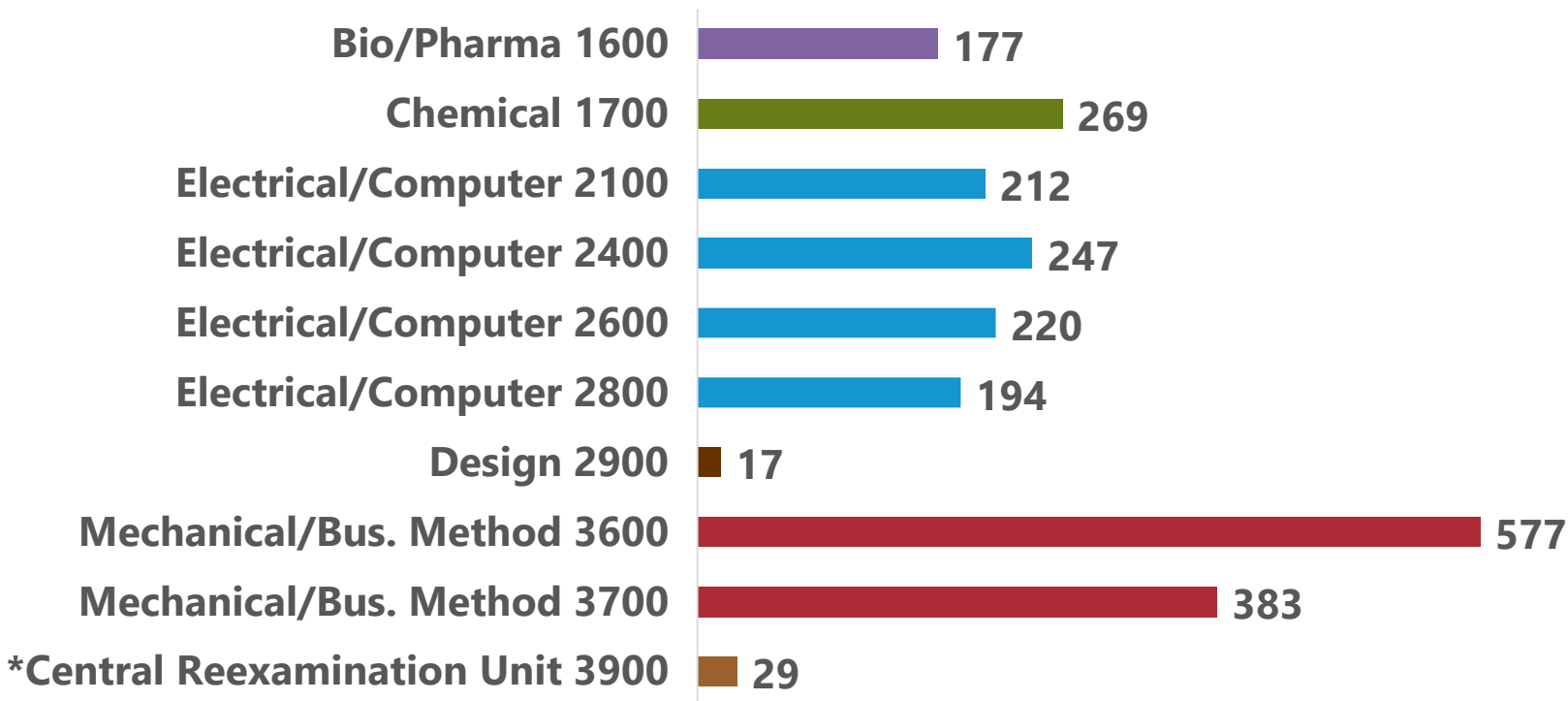


Pendency is calculated as average months from Board receipt date to final decision.  
 \*CRU (Central Reexamination Unit) includes ex parte reexams, inter partes reexams, supplemental examination reviews and reissues from all technologies.



# Appeal Intake in FY18

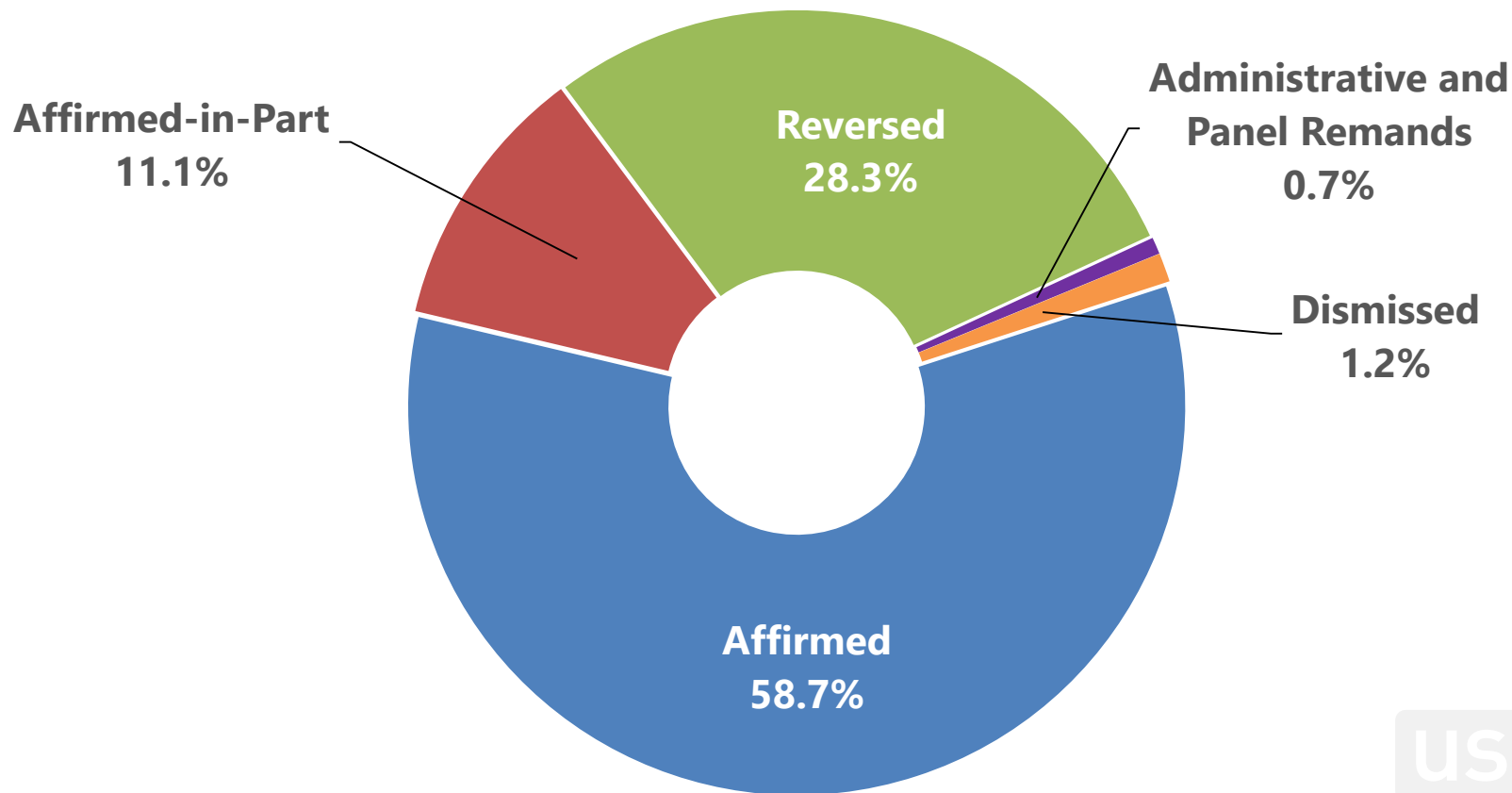
(10/1/17 to 12/31/17)



\*The Central Reexamination Unit includes ex parte reexams, inter partes reexams, supplemental examination reviews and reissues from all technologies.

# Appeal Outcomes in FY18

(FY18: 10/1/17 to 12/31/17)



# Interference Inventory

(FY08 to FY18: 9/30/08 to 12/31/17)

