

**UNITED STATES
PATENT AND TRADEMARK OFFICE**



Appeal and Interference statistics

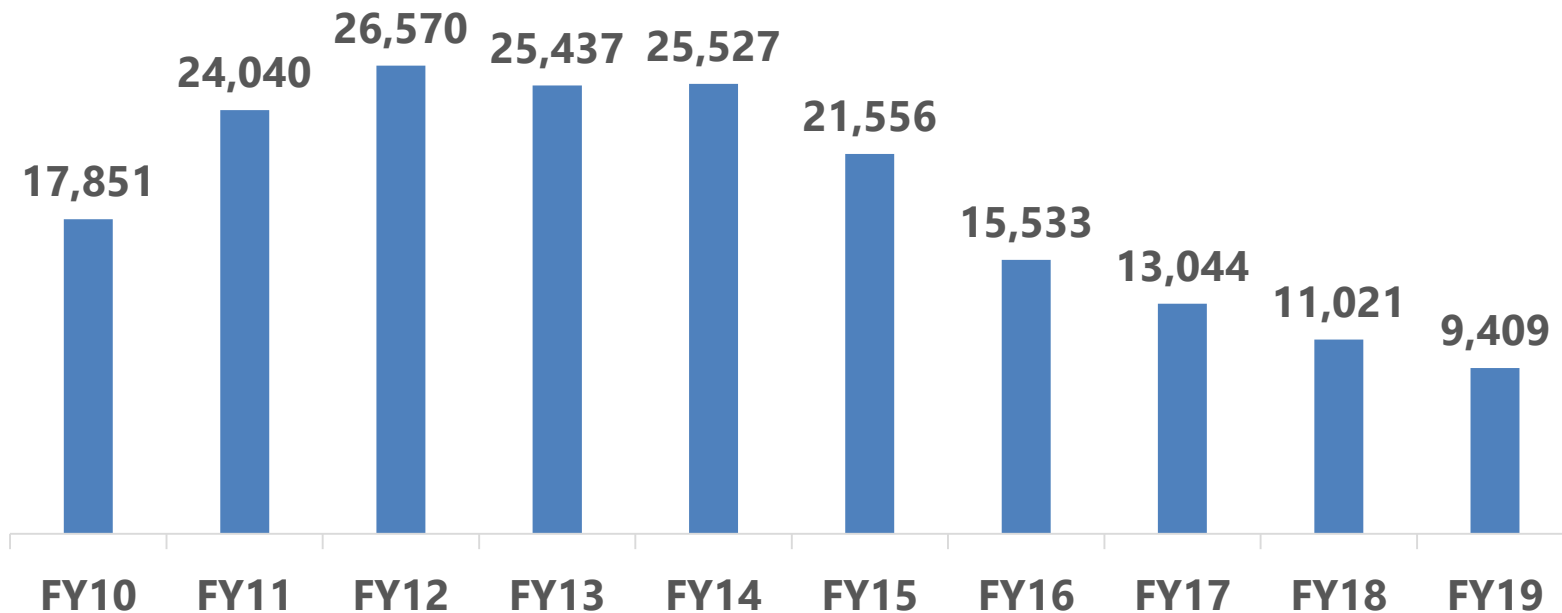
Patent Trial and Appeal Board
May 31, 2019

UNITED STATES
PATENT AND TRADEMARK OFFICE



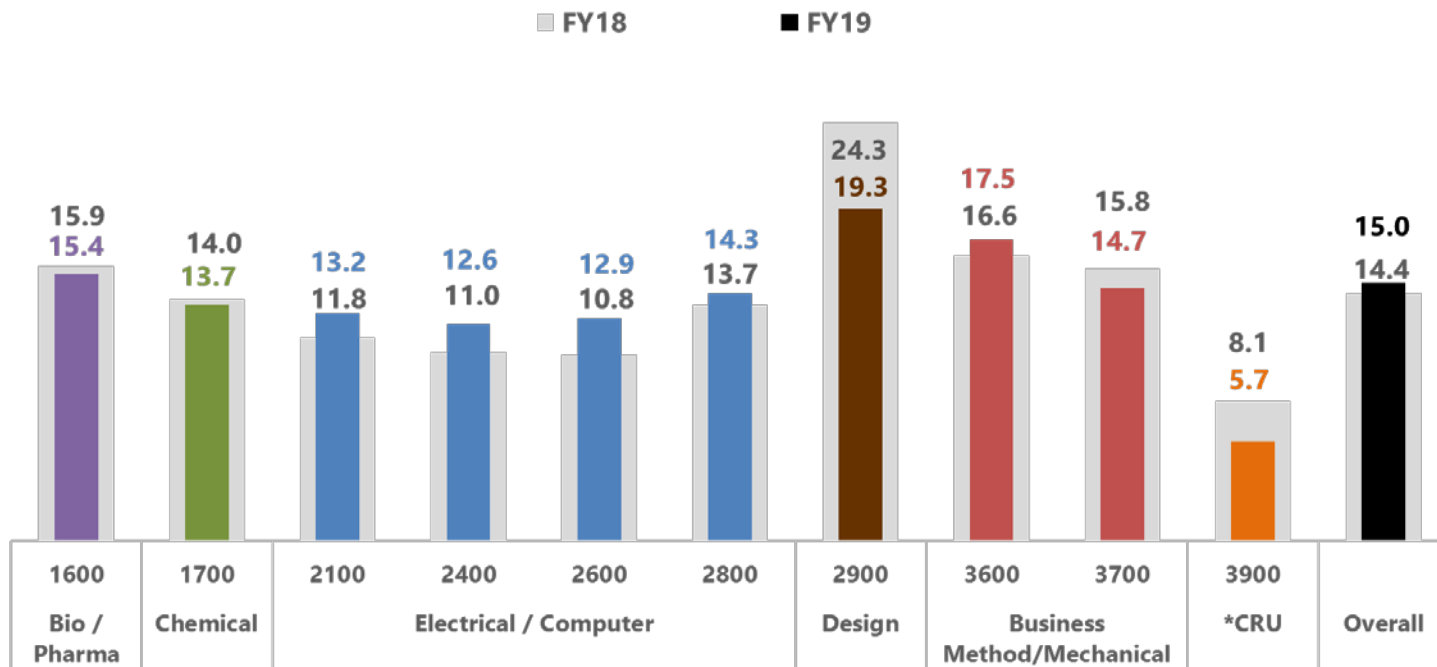
Pending appeals FY10 to FY19

(Sept. 30, 2010 – May 31, 2019)



Pendency of decided appeals in FY18 and FY19

(Mar. – May FY18 compared to Mar. – May FY19)



Pendency is calculated as average months from Board receipt date to final decision.

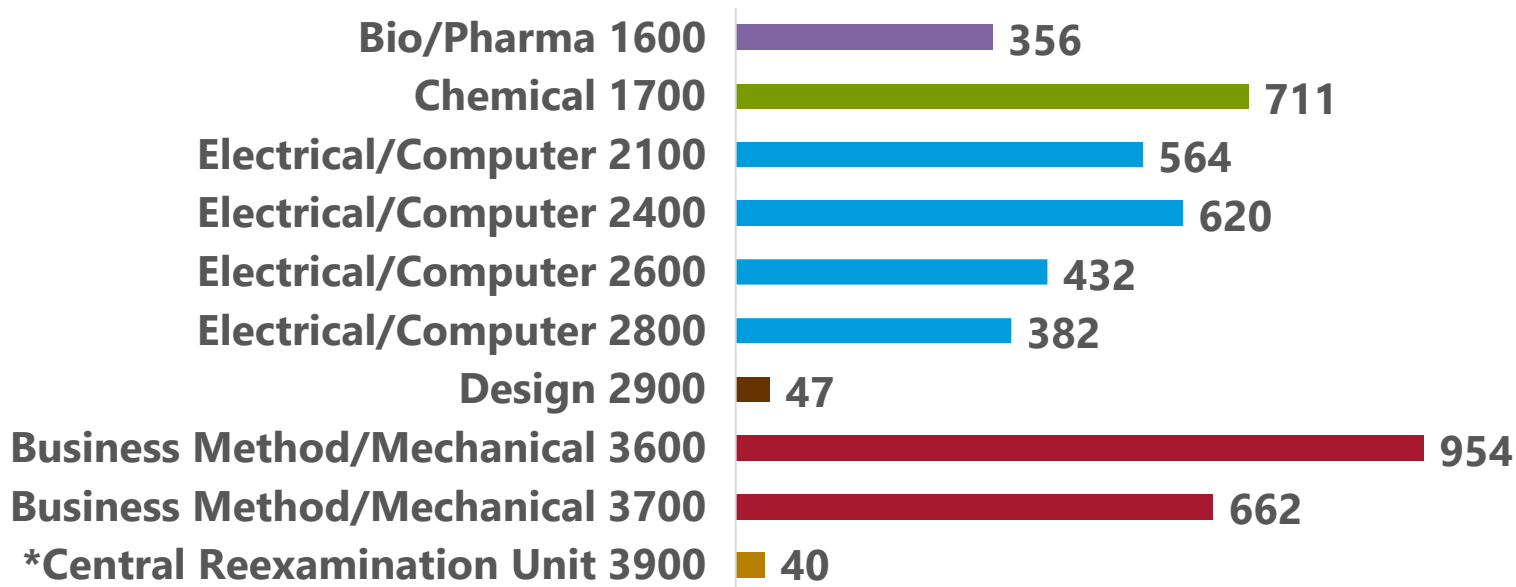
Pendency is calculated for a three month period compared to the same period the previous year.

*CRU (Central Reexamination Unit) decisions include 7 *ex parte* reexam, 11 *inter partes* reexam, 1 supplemental examination review, and 4 reissues from all technologies.



Appeal intake in FY19

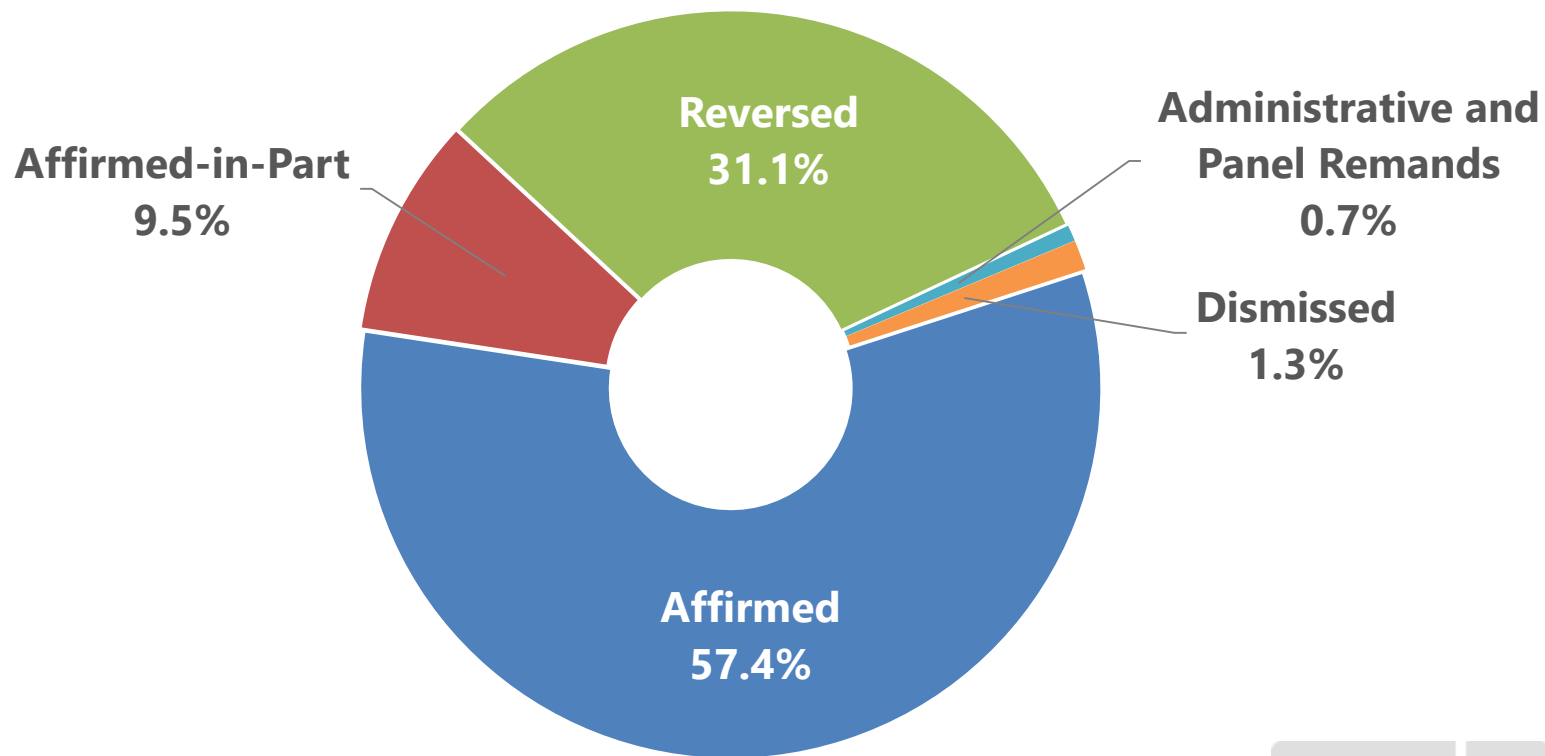
(Oct. 1, 2018 – May 31, 2019)



*The Central Reexamination Unit includes ex parte reexams, inter partes reexams, supplemental examination reviews and reissues from all technologies.

Appeal outcomes in FY19

(Oct. 1, 2018 - May 31, 2019)



Interference inventory

(Sept. 30, 2008 – May 31, 2019)

