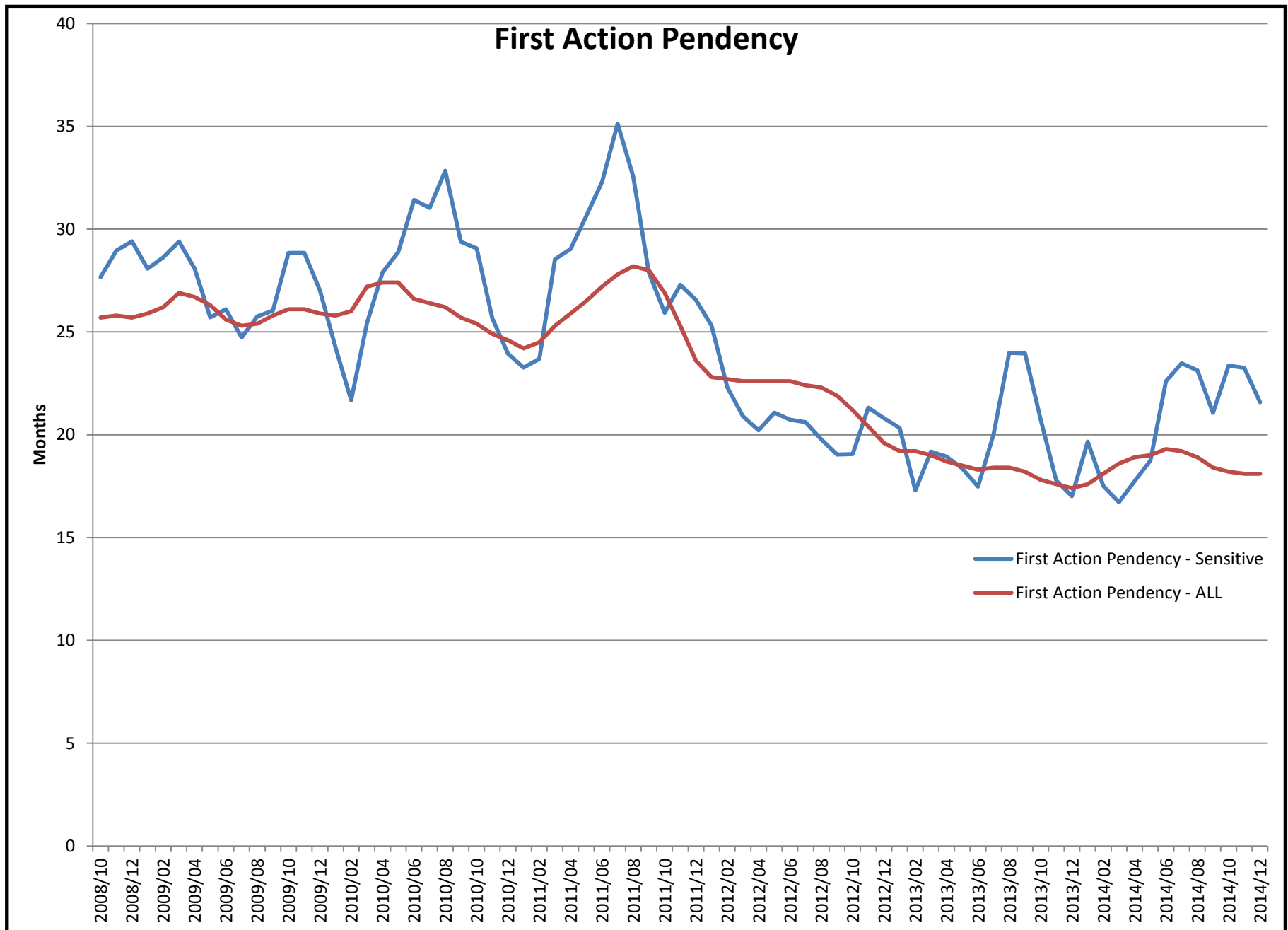
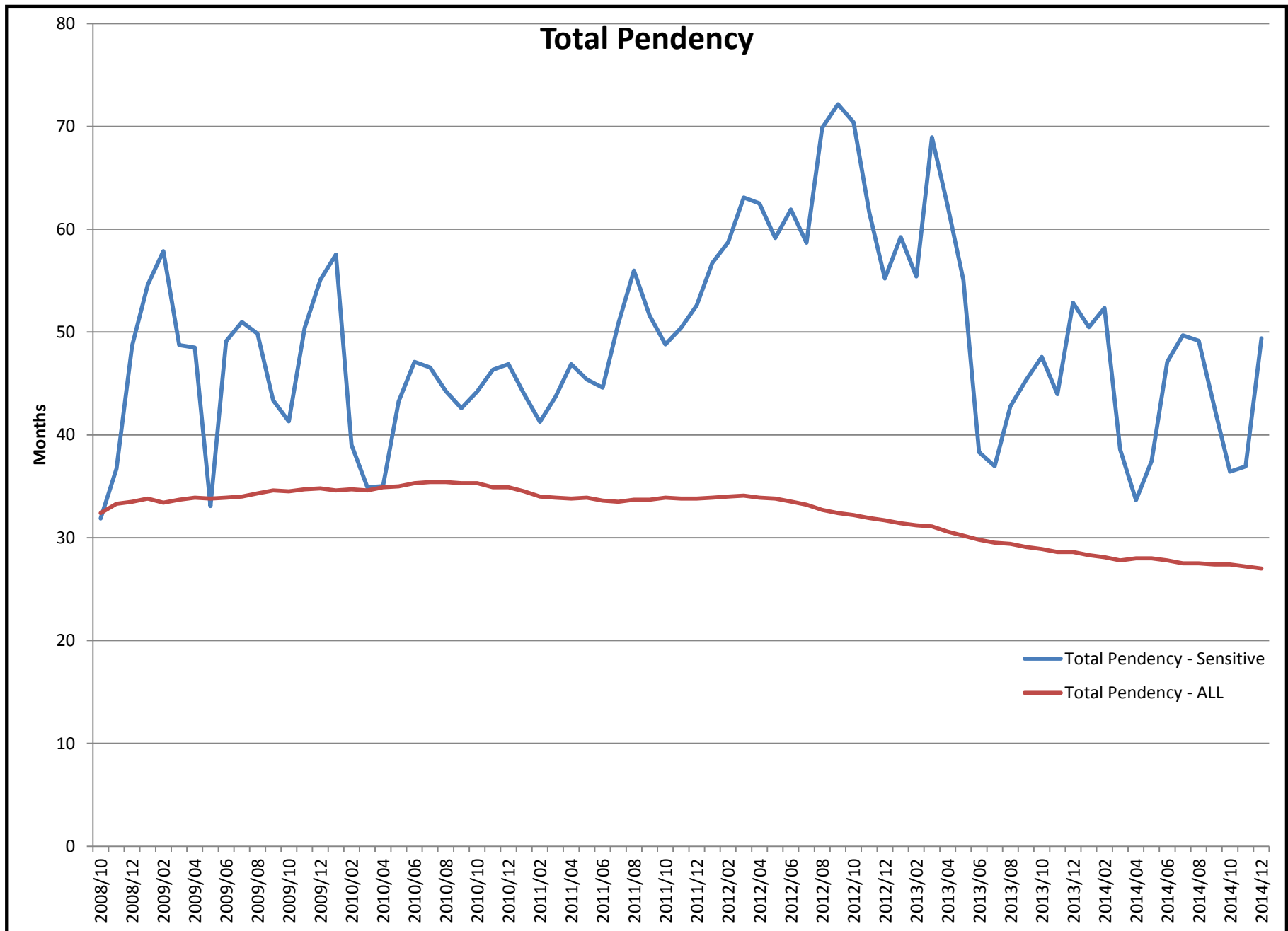


In a typical month, the total volume of cases classified as sensitive is just over 500. In contrast, there are approximately 1.2 million total applications pending, making sensitive cases equal to about 0.04% of all cases.



Sensitive cases have approximately the same First Action pendency as other cases. The very small number of sensitive cases (typically about 50 first actions, or about 0.05% of total) causes considerable variance from month-to-month. The chart shows a three-month rolling average.



Sensitive cases have higher total pendency than other cases due to the nature of the applications and subject matter involved. The very small number of sensitive cases (typically about 30 disposals, or about 0.03% of total) causes considerable variance from month-to-month. The chart shows a three-month rolling average.