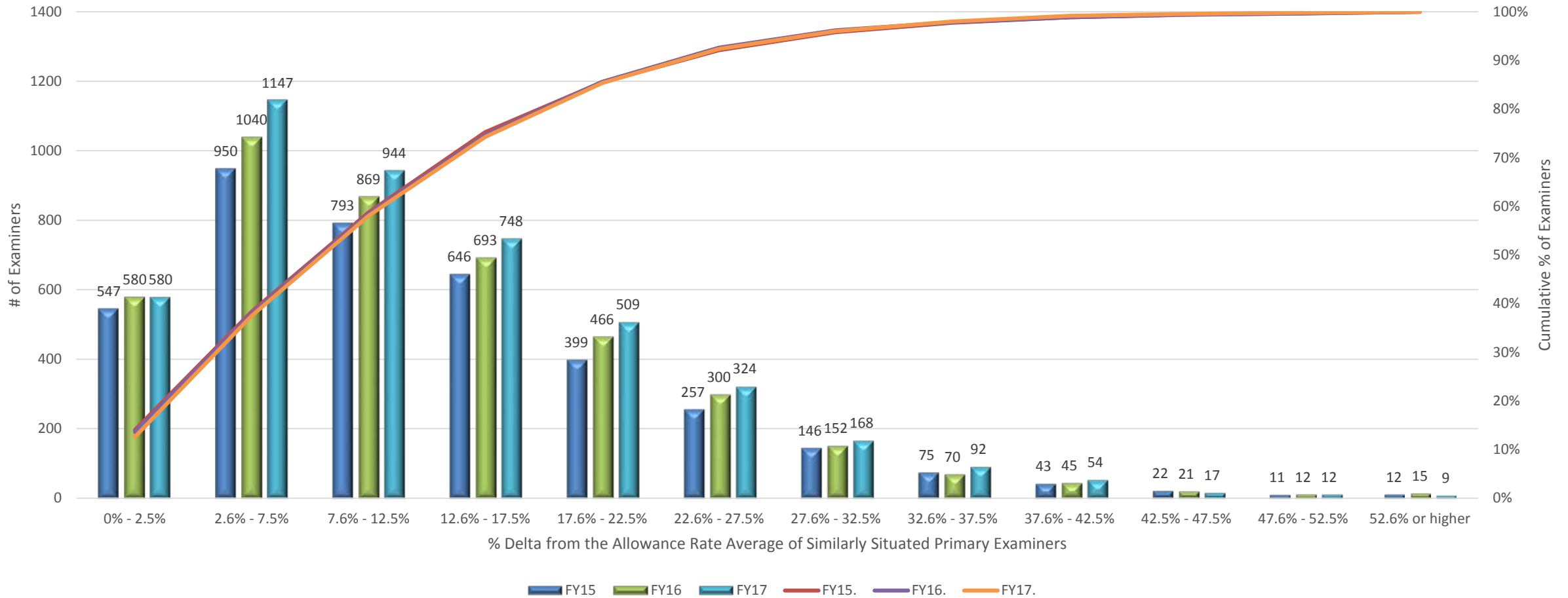


Consistency in Decision Making

Differences in allowance rates among similarly situated primary examiners



Consistency of Decision Making: This chart shows, for individual primary examiners, the percent change from their allowance rate to the allowance rate of similarly situated primary examiners in a Technology Center or Class (e.g., $|(examiner\ rate - average\ rate\ of\ similarly\ situated\ examiner)/average\ rate\ of\ similarly\ situated\ examiners|$). In other words, in FY17, 944 primary examiners had an allowance rate within 7.6-12.5% of the average allowance rate. Also, the cumulative x-axis on the right shows, for example, that about 66% of primary examiners were within 12.5% of the average allowance rate in FY17, as depicted by the orange line.

USPTO uses this type of information to identify areas to investigate further through a root-cause analysis.