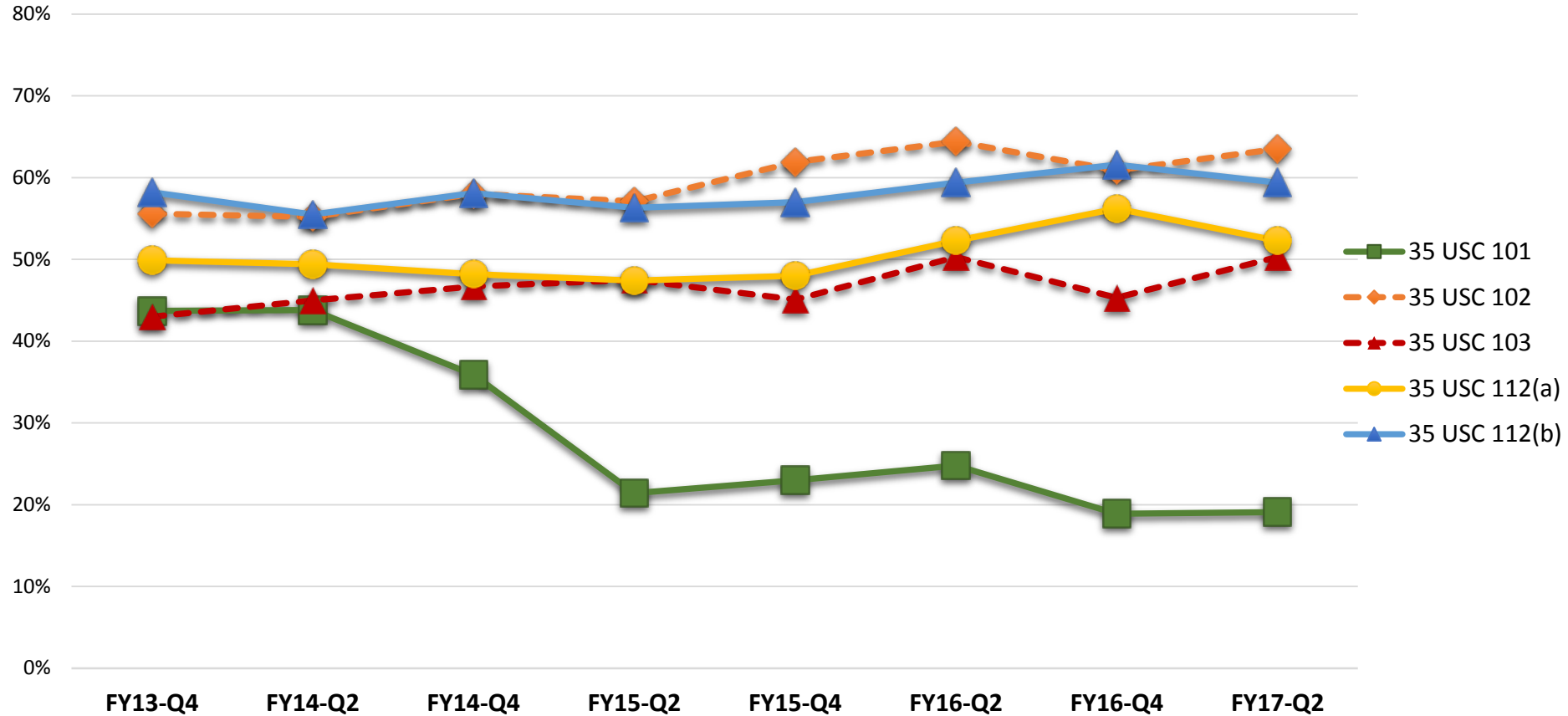


# Frequency of Sound Rejections by Statute

Percentage of respondents reporting since 2013 “most” or “all” of the time they received technically, legally and logically sound rejections in the various statutory categories



**Frequency of Sound Rejections:** This chart shows how external customers have responded to the question “How often were the rejections, which you received over the past 3 months made under the following statutes, reasonable in terms of being technically, legally, and logically sound?” on a scale of 1 (rarely), 2 (some of the time), 3 (most of the time), and 4 (all of the time) reported as a combination of “most” and “all” of the time rejections were sound.

USPTO uses this type of information to compare trends in perception to trends in compliance rates, for a given statute, to assure alignment of our metrics with stakeholders’ perceptions.