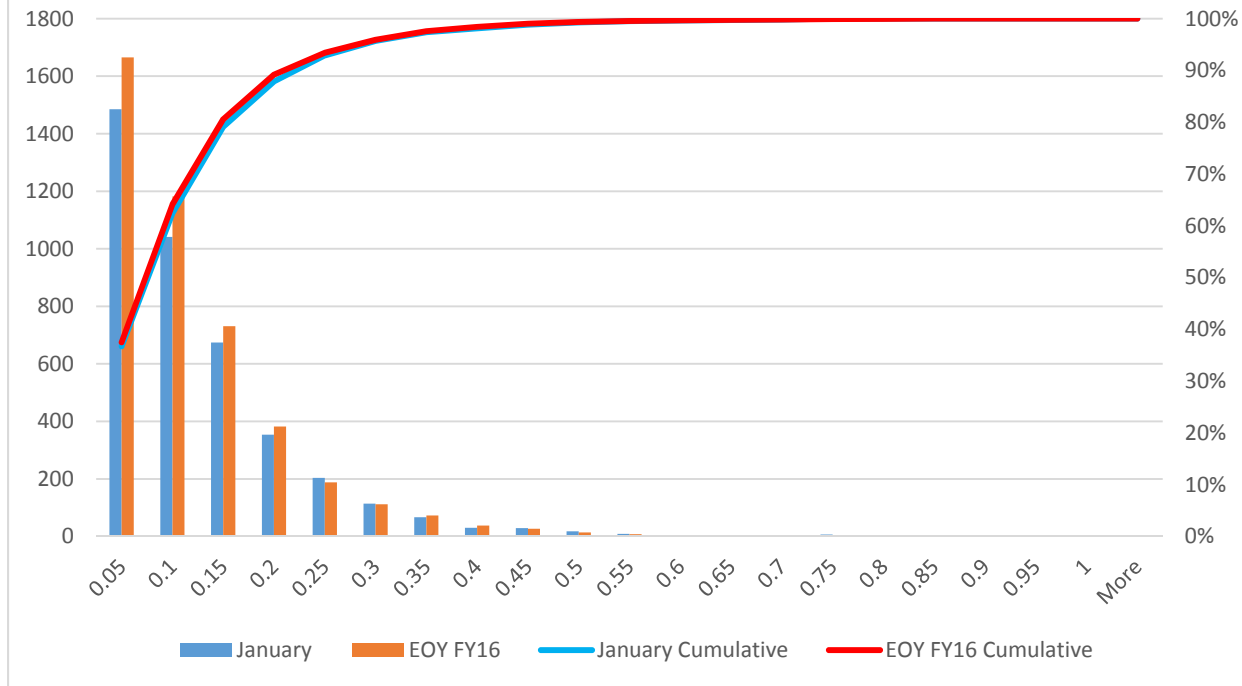


## Consistency in Decision Making (January vs EOY FY2016)

Differences in Allowance Rates among Similarly Situated Primary Examiners  
Primary Examiners vs. Average of Other Primary Examiners in TC/Class



**Consistency of Decision Making:** This chart shows the absolute value of the difference between the allowance rate of a primary examiner and the average allowance rate of similarly situated primary examiners in a Technology Center or Class. The chart also shows the percentage of primary examiners falling between no difference and a given difference on the x-axis.

The Office uses this type of information to identify areas to investigate further through a root-cause analysis.