

Patent Public Advisory Committee Meeting

Patent Operations



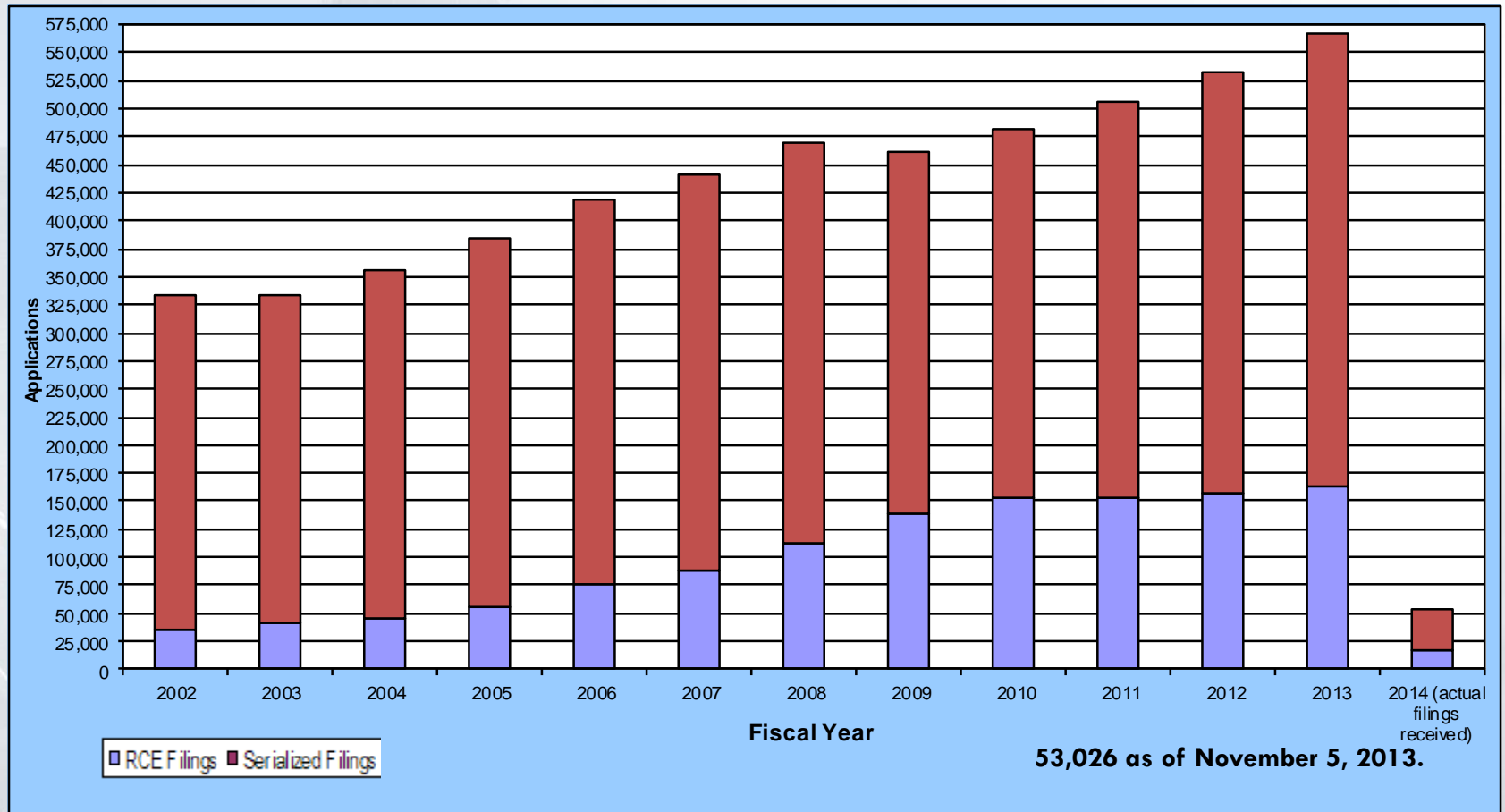
Jacqueline Stone

Assistant Deputy Commissioner for Patent Operations

November 21, 2013



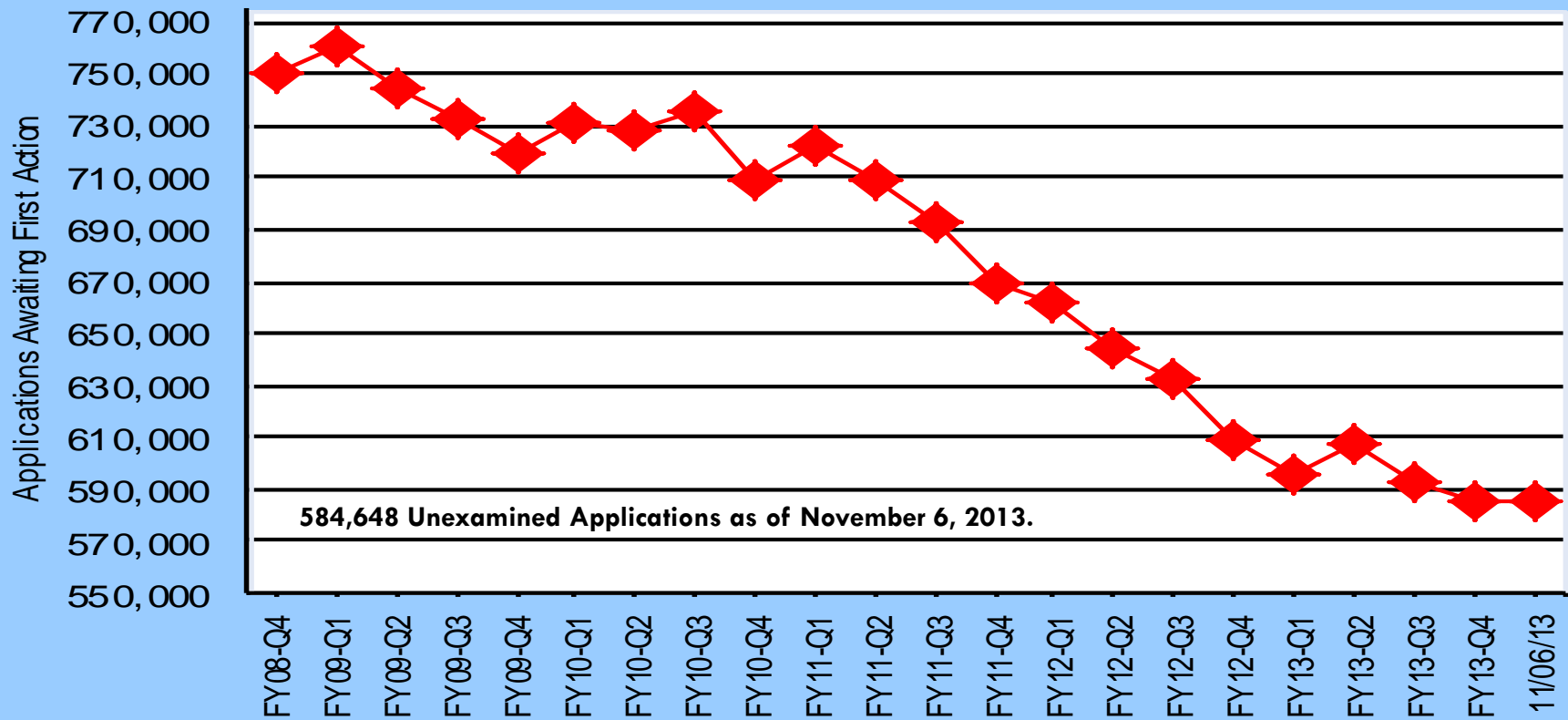
Total Serialized and RCE Filings FY 2002 – FY 2014 (through November 5)



FY 2014 total UPR filing growth rate is projected to be 6.5% over FY 2013.



Unexamined Patent Application Backlog FY 2009 – FY 2014 (through November 6)

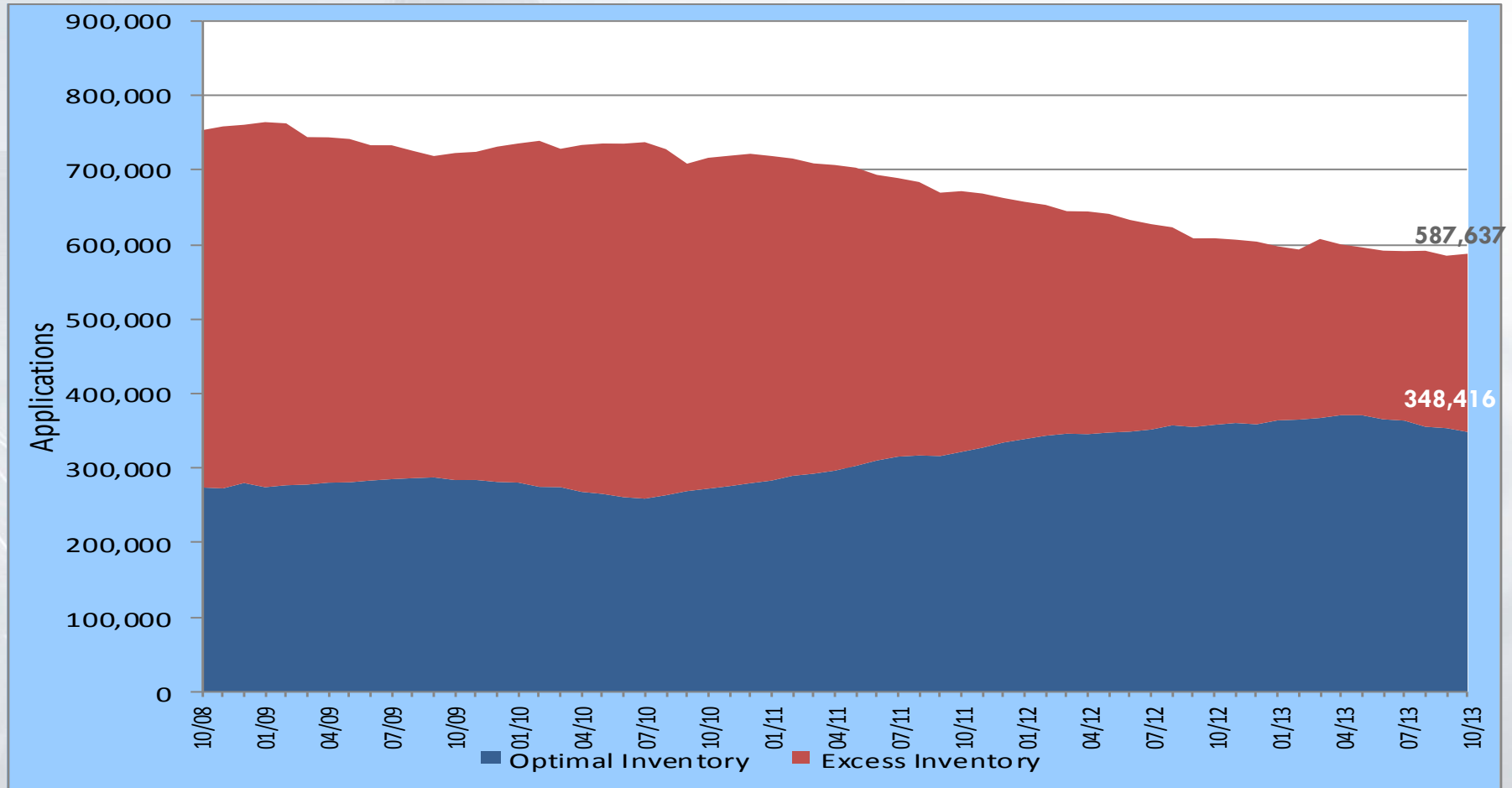




Excess and Optimal

Unexamined Patent Application Inventory

FY 2009 – FY 2014 (through October 30)

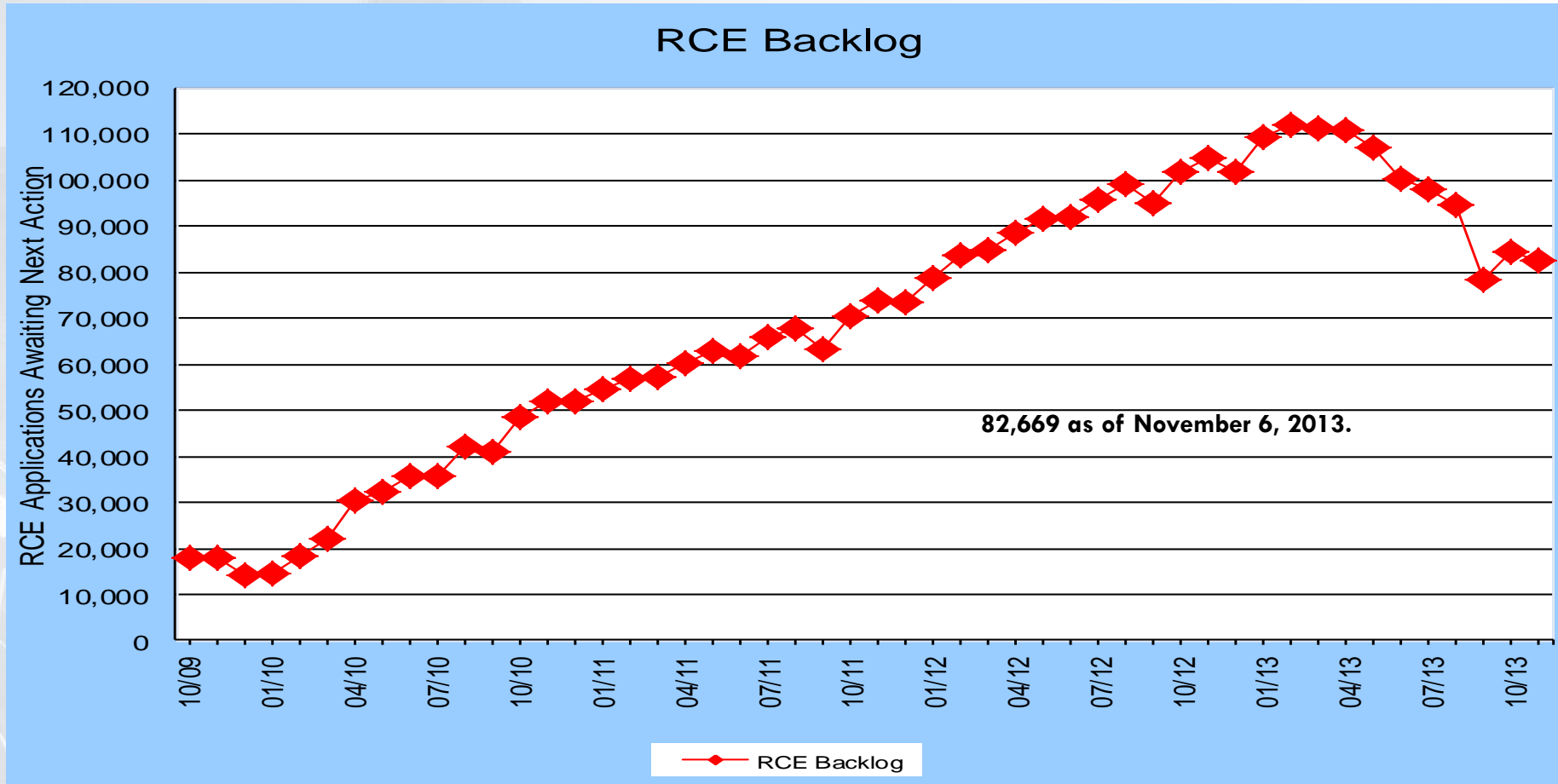


239,221 Excess Unexamined Applications as of October 2013.



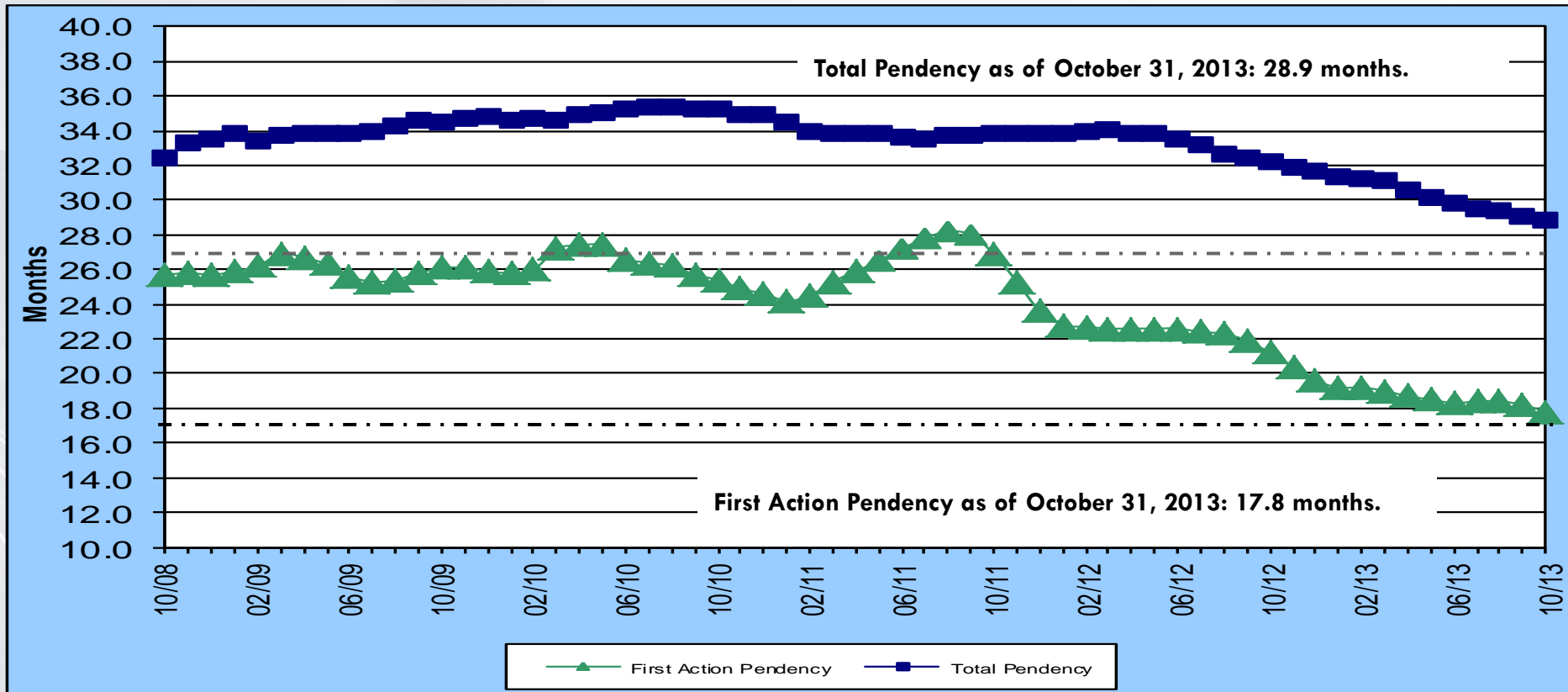
RCE Backlog

FY 2010 – FY 2014 (through November 6)





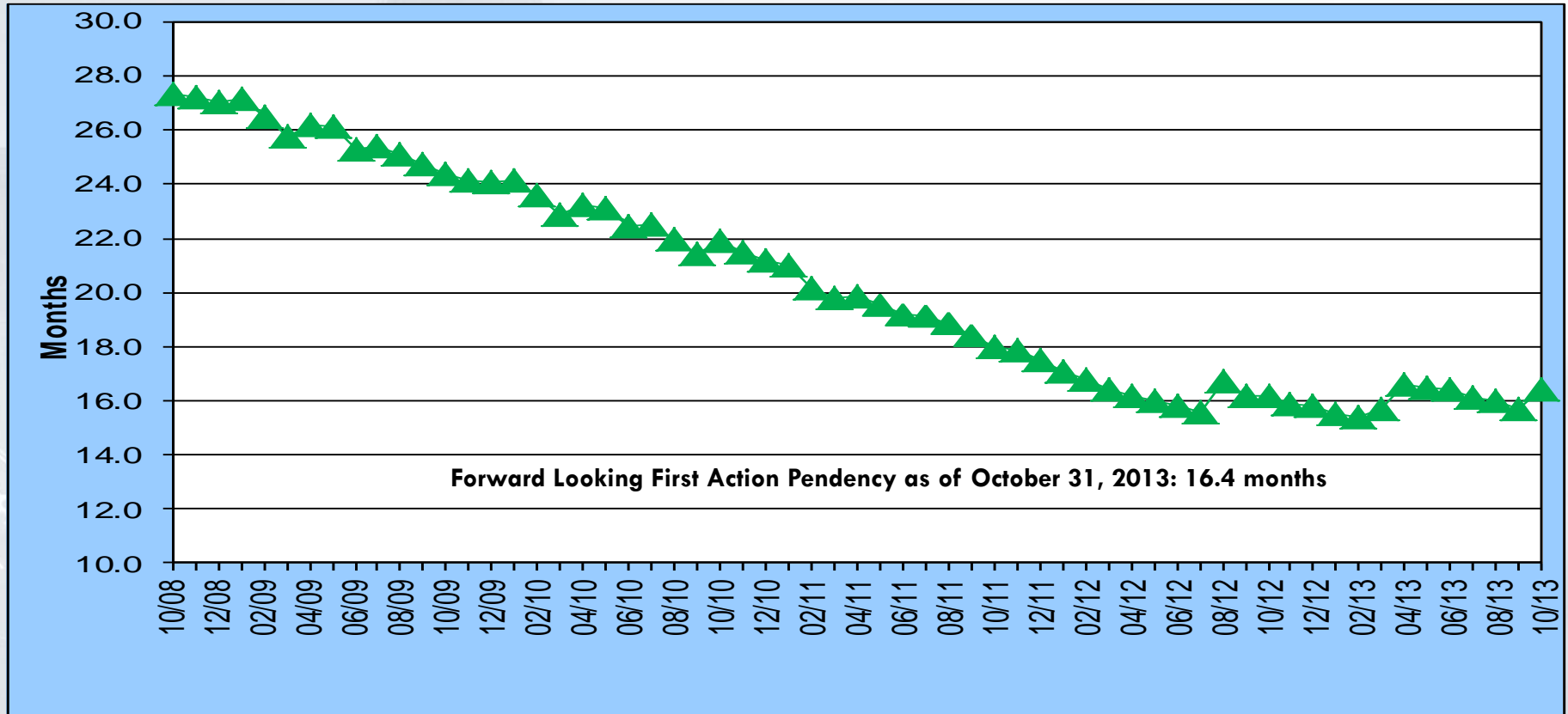
First Action Pendency and Total Pendency FY 2009 – FY 2014 (through October)



- - - Average Total Pendency FY 2014 Target (2015 President's Budget): 26.7 months
- - - Average First Action Pendency FY 2014 Target (2015 President's Budget): 17.4 months



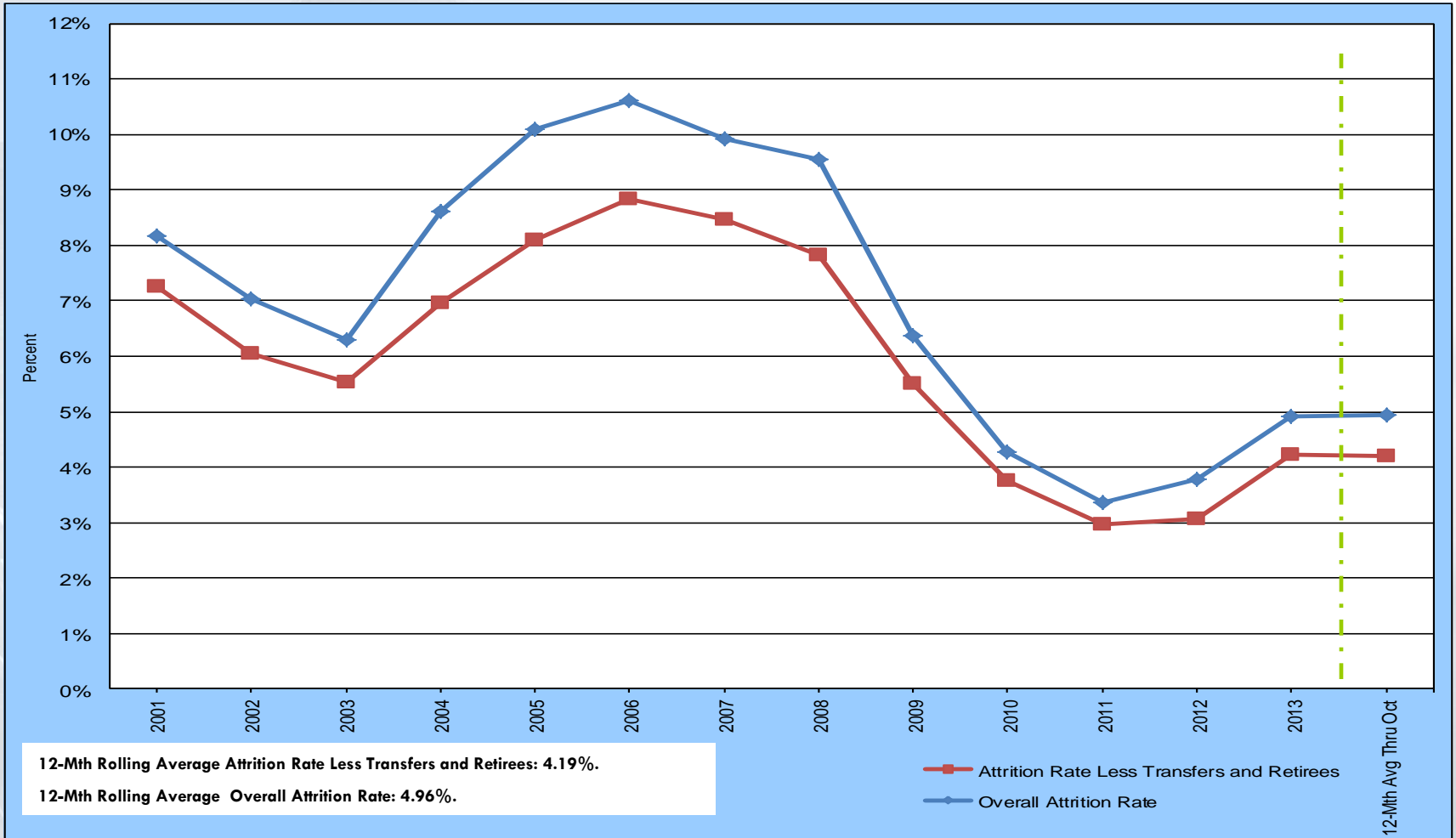
Forward Looking First Action Pendency FY 2009 – FY 2014 (through October)



Forward Looking Pendency represents an estimate of the average number of months it would take to complete a first Office action under current and projected workload and resource levels for an application filed at the given date.



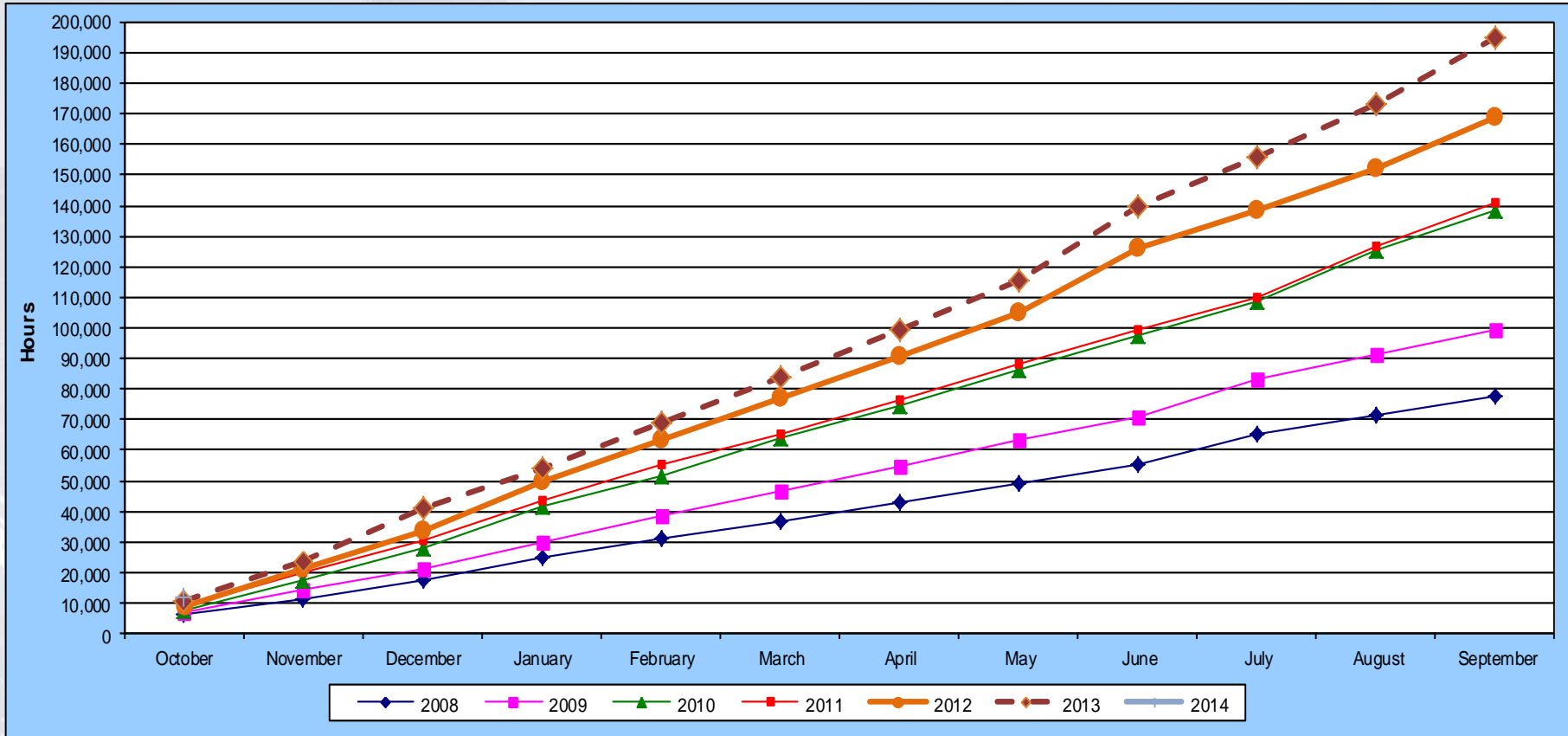
12-Month Rolling Average UPR Examiner Attrition Rate Less Transfers and Retirees and Overall Attrition Rate FY 2001 – FY 2014 (through October 31)



— · — · — The line represents when 12-month rolling average data begins.



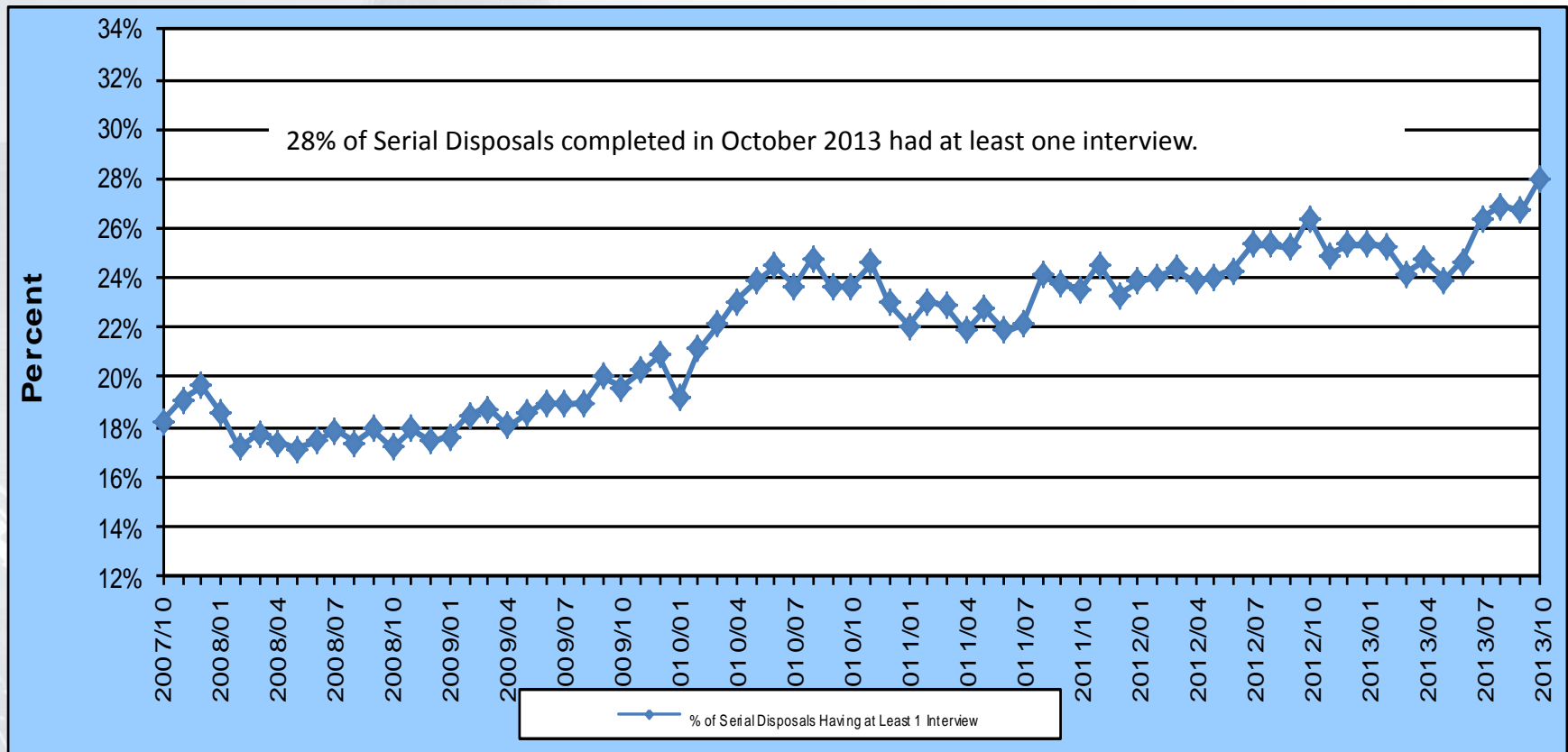
Interview Time FY 2008 – FY 2014 (through October 31)



12,050 hours through October FY 2014, compared with 10,567 hours in October FY 2013.



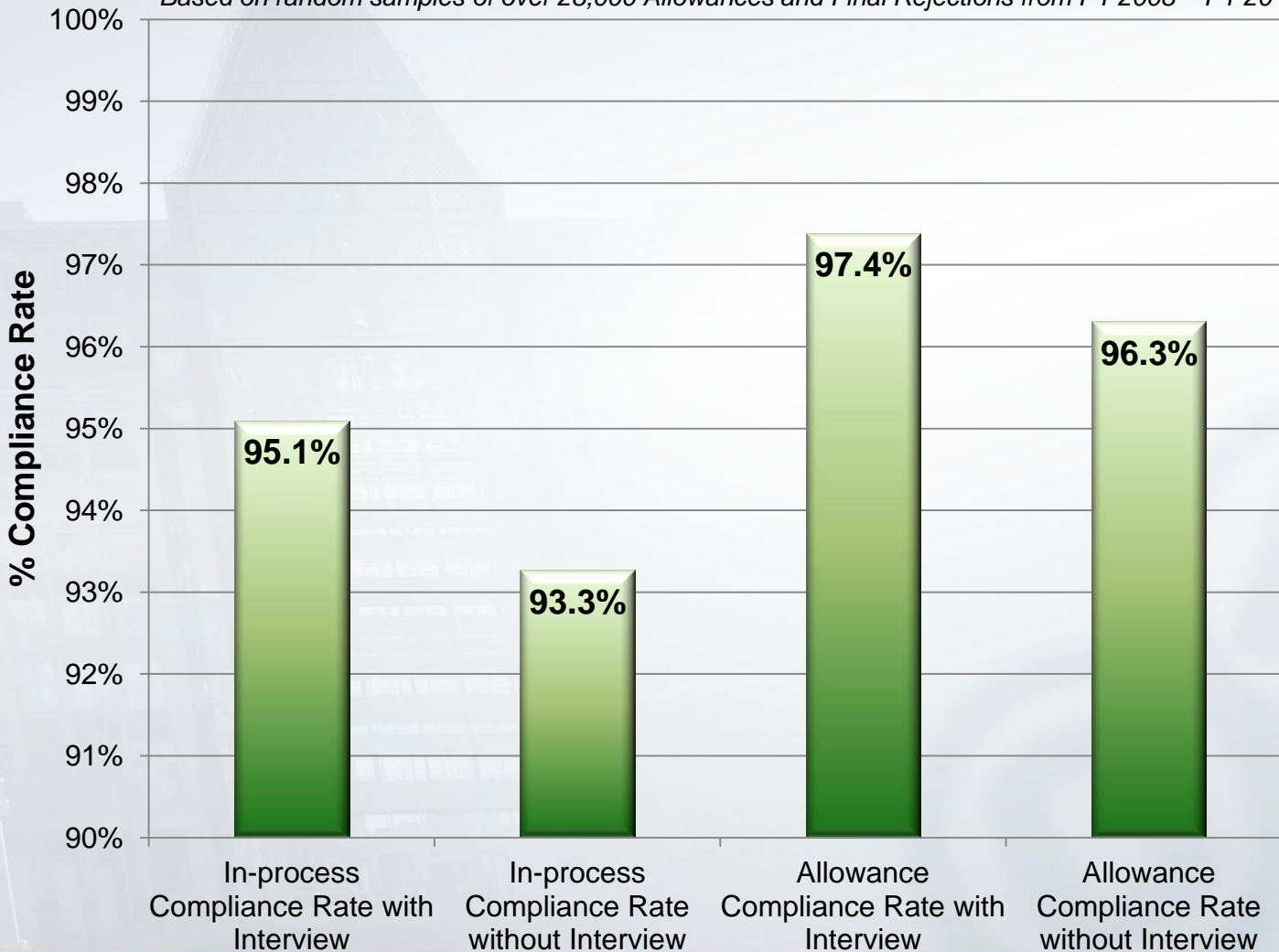
Percent of Serial Disposals Having at Least One Interview by Month FY 2008 – FY 2014 (through October 31)





Influence of Interviews on Compliance Rate

•Based on random samples of over 28,000 Allowances and Final Rejections from FY 2008 – FY 2012





Track One Statistics (through November 14, 2013)

Petitions Received	October	November	December	January	February	March	April	May	June	July	August	September	Total
FY 11												855	855
FY 12	390	302	285	292	371	442	457	516	436	470	517	559	5,037
FY 13	505	513	575	504	468	1,029	400	508	530	584	642	636	6,894
FY 14	712	210											922

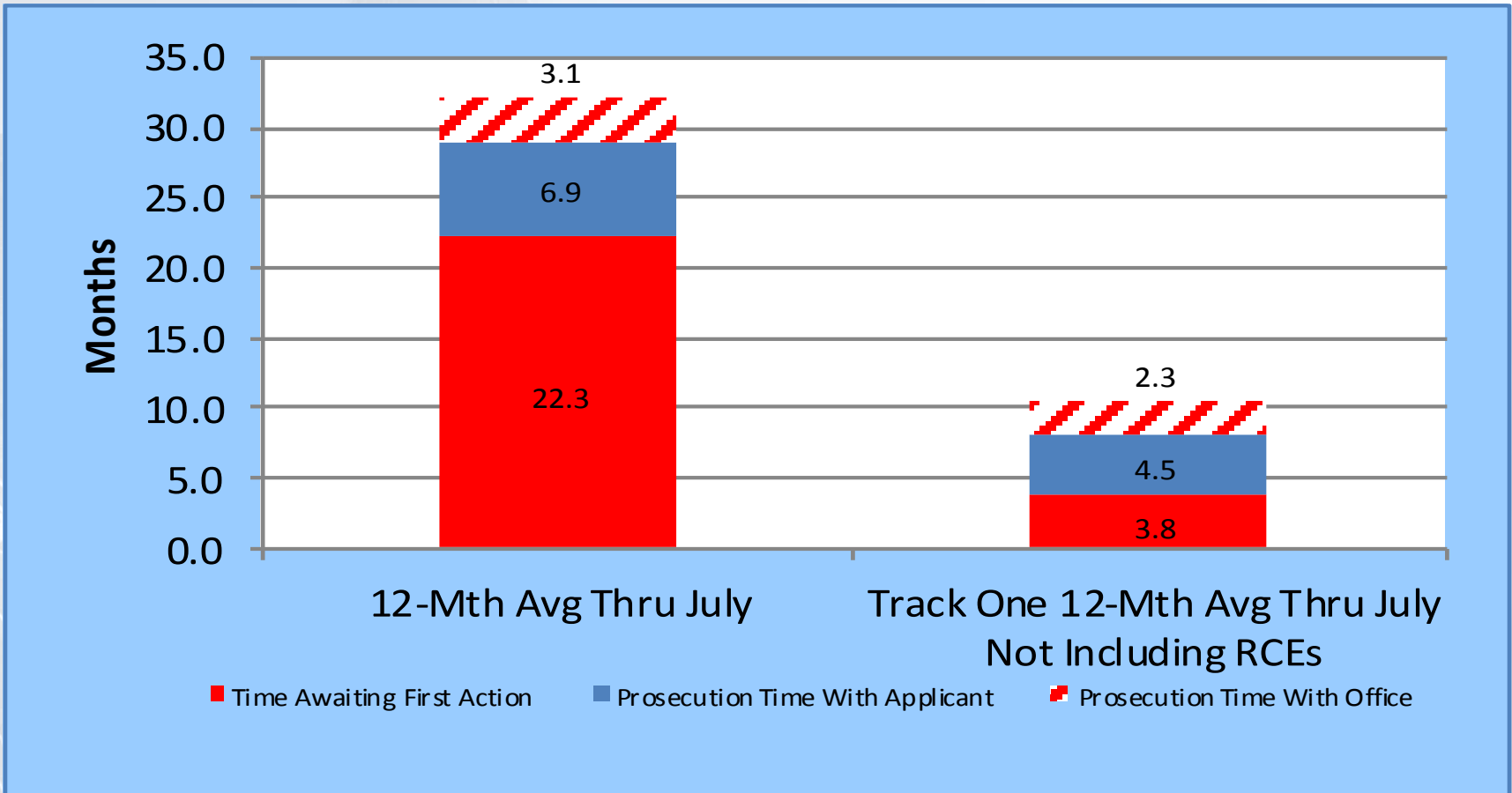
Percent of Petitions From Small Entities	Number of Micro Entity Applications	Average Days to Petition Decision	% of Decided Petitions Granted	Track One Requests Filed After RCE	% of Track One Serial Disposals Having at Least One Interview
48.2%	227	48	94%	943	52%

First Actions Completed	Average Days from Petition Grant to First Office action	Final Rejections	Issues	Number of Abandonments	Number of Allowances	Number of Appeal Briefs Filed	Number of Notice of Appeals Filed	Average Days From Petition Grant to Allowance	Average Days From Petition Grant to Final Disposition
10,259	64	3,809	3,420	159	3,712	178	421	152.7	187

First Patent Issued on January 10, 2012 from a September 30, 2011 Prioritized Examination filing



Office Time/Applicant Time – Total Pendency Vs. Track One Total Pendency (12-month Rolling Average through July)





Quality Composite



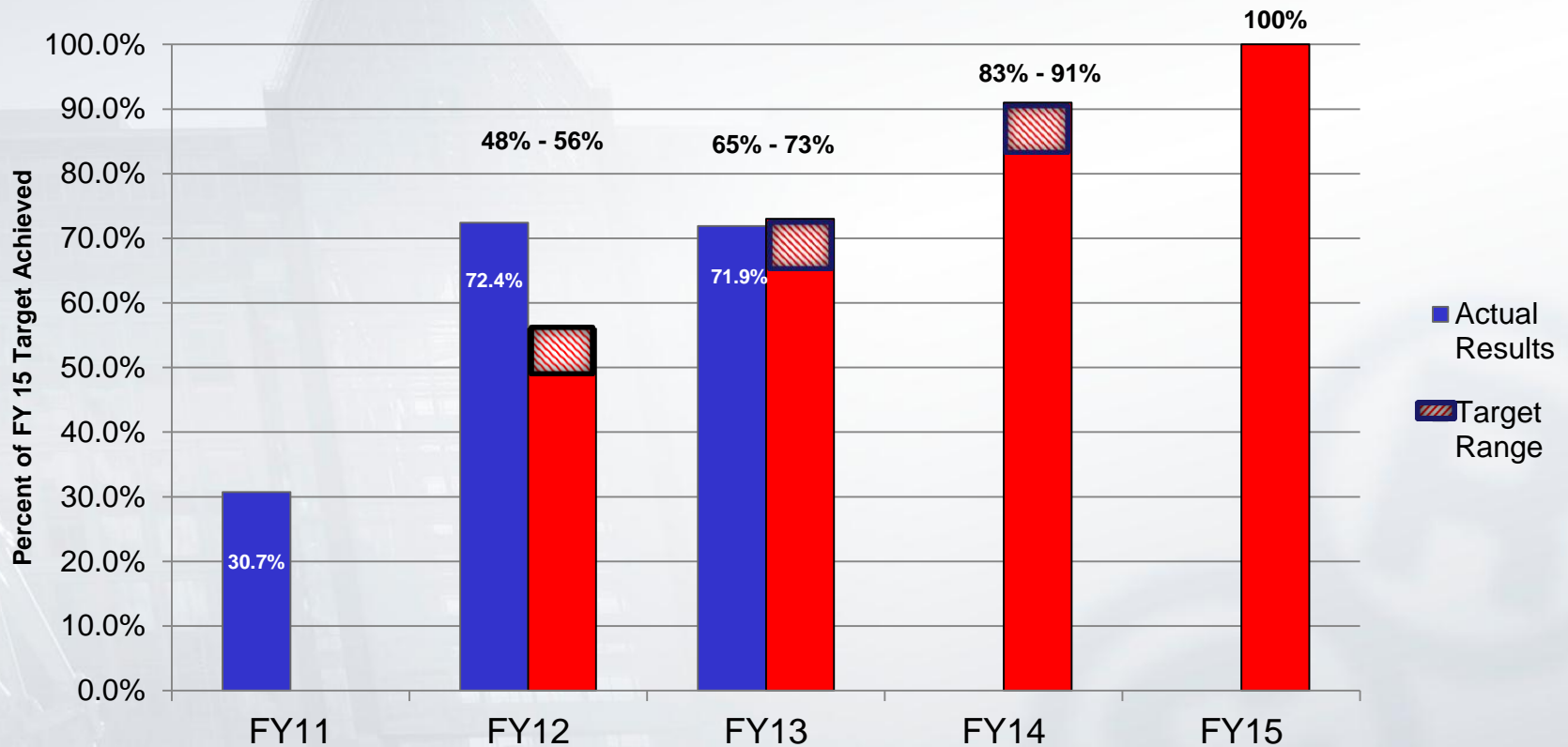
Reporting Period	USPTO Patent Quality Composite Metrics							Quality Composite Score Stretch Goal (FY15) = 100%
	Final Disposition Compliance Rate	In-Process Compliance Rate	FAOM Search Review	Complete FAOM Review	Quality Index Reporting	External Quality Survey	Internal Quality Survey	
	Baseline (FY09) = 94.4% Stretch Goal (FY15) = 97.0%	Baseline (FY09) = 93.6% Stretch Goal (FY15) = 97.0%	Baseline (FY11) = 94.6% Stretch Goal (FY15) = 97.0%	Baseline (FY11) = 90.9% Stretch Goal (FY15) = 97.0%	Baseline (FY09) = 85.9% Stretch Goal (FY15) = 94.0%	Baseline (FY09) = 1.2 Stretch Goal (FY15) = 5.0	Baseline (FY11) = 4.3 Stretch Goal (FY15) = 6.0	
FY13Q4	96.2%	96.3%	97.6%	90.5%	90.8%	5.8	7.4	71.9%
FY13Q3	96.2%	96.2%	97.4%	90.6%	90.2%	--	--	64.9%
FY13Q2	96.5%	95.6%	97.1%	90.5%	89.9%	6.4	5.1	63.6%
FY13Q1	96.6%	95.9%	96.8%	90.6%	89.8%	--	--	72.0%
EOY12	96.6%	95.9%	97.2%	90.9%	89.8%	5.2	9.4	72.4%
FY12Q3	96.6%	96.1%	96.6%	90.8%	90.1%	--	--	66.1%
FY12Q2	96.3%	96.0%	97.0%	91.3%	89.6%	5.0	5.1	65.5%
FY12Q1	95.4%	95.2%	95.7%	90.8%	89.5%	--	--	35.2%
EOY11	95.4%	95.2%	94.6%	90.9%	89.5%	3.0	4.3	0.0%
EOY10	96.3%	94.9%	N/A	N/A	89.3%	3.6	N/A	N/A
EOY09 (Baseline)	94.4%	93.6%			85.9%	1.2		
Composite Weight	20%	15%	10%	10%	20%	15%	10%	

Composite components are based on 12-month rolling averages collected on a quarterly basis, with the exception of the two survey items which are collected on a semi-annual basis and represent a snapshot of that particular period only.



Quality Composite FY 2011 – FY 2013

Monitoring Continuous Improvement



FY 2011 was baseline year.



Questions and Comments?

Jacqueline Stone

Assistant Deputy Commissioner for
Patent Operations

571-272-0500

Jacqueline.Stone@uspto.gov