



UNITED STATES  
PATENT AND  
TRADEMARK OFFICE

---

**PPAC**  
**Patents Operations Update**

**Peggy Focarino**  
**Deputy Commissioner for Patents**  
**July 8, 2010**



# Dashboard

			1st			2nd		
	Oct-09	Nov-09	Dec-09	Jan-10	Feb-10	Mar-10	Apr-10	May-10
<b>Total UPR Filings</b>	37,791	36,567	41,925	33,076	36,564	46,264	41,164	37,393
<b>RCE Filings</b>	11,298	11,612	10,178	10,714	12,405	15,151	13,651	11,794
<b>2nd and subsequent RCE Filings</b>	3,320	3,596	2,951	3,168	3,881	4,762	4,372	
<b>% RCE of Total</b>	29.9%	31.8%	24.3%	32.4%	33.9%	32.7%	33.2%	31.5%
<b>Actions per disposal</b>	2.18	2.27	2.29	2.28	2.27	2.34	2.35	2.37
<b>Reissue Filings</b>	84	79	63	76	79	80	82	
<b>Allow &amp; Final Comp Rate (12 month rolling avg)</b>			94.5%			94.4%	95.1%	95.0%
<b>Non Final Comp Rate (12 month rolling avg)</b>			94.1%			95.7%	96.6%	96.2%
<b>Number of Printer Rushes Over 30 Days in TC</b>	1,276	1,588	1,538	1,065	1,003	739	741	715
<b>UPR Allowance rate *</b>	41.3%	43.3%	44.3%	44.0%	43.7%	44.2%	44.0%	44.3%
<b>Allowance rate without RCE abandonments *</b>	56.4%	57.4%	57.1%	57.1%	57.3%	58.3%	58.6%	59.1%
<b>Number of Allowances *</b>	23,461	42,911	69,599	79,056	95,601	115,322	131,255	131,255
<b>UPR Backlog</b>	722,835	724,458	731,399	735,691	739,243	728,323	733,625	736,138
<b>RCE Backlog</b>	17,763	18,114	14,226	15,978	18,480	22,009	28,155	31,738
<b>RCE to FAOM (months)</b>	2.07	2.05	2.05	2.05	2.05	2.01	2.00	1.99

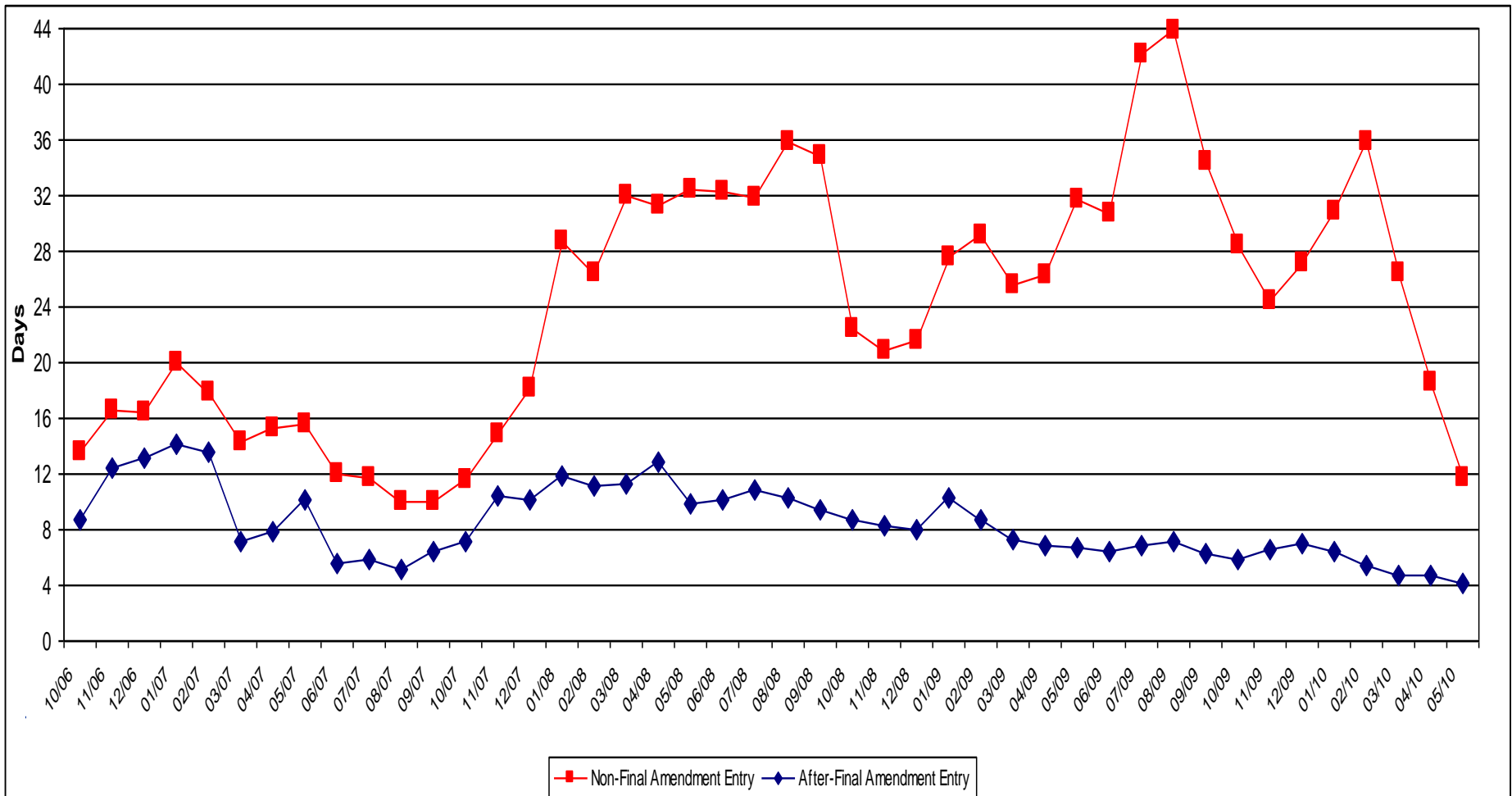


# Dashboard

			1st			2nd		
	Oct-09	Nov-09	Dec-09	Jan-10	Feb-10	Mar-10	Apr-10	May-10
Months of Inventory	26.1	26.1	25.9	25.8	26.0	27.2	27.4	27.5
UPR Pendency FA (months)	26.1	26.1	25.9	25.8	26.0	27.2	27.4	27.5
UPR Total Pendency	34.5	34.7	34.8	34.6	34.7	34.6	34.9	35.0
Rexam FA Pendency (months)			6.5					
Green Tech Petitions received			325	351	124	76	67	72
Green Tech Petitions approved %				10.4%	39.8%	35.90%	37.30%	39.80%
Exchange Petitions received *				16	14	2	4	2
Office of Petitions Pendency (months)			3.1					
UPR Examiner Staff	6,126	6,107	6,093	6,068	6,060	6,046	6,045	6,029
Examiner Attritons (less transfers & retirees)	22	18	18	18	12	20	17	25
Percent of Staff attrited	0.36%	0.29%	0.30%	0.30%	0.20%	0.33%	0.28%	0.41%
UPR Backlog per examiner	118.0	118.6	120.0	121.2	122.0	120.5	121.4	122.1
UPR Production Units	29,985	36,661	42,235	48,379	33,184	41,433	34,265	35,770
UPR Production units per Examiner	4.89	6.00	6.93	7.97	5.48	6.85	5.67	5.93
Design Filings ~	2,318	2,135	2,480	2,251	2,013	2,801	2,597	1,758
Design Backlog ~	17,409	17,297	17,257	17,573	17,773	17,466	18,229	18,590
Amendment Processing Time (days)	28.5	24.5	27.1	30.8	35.9	26.4	18.6	11.7

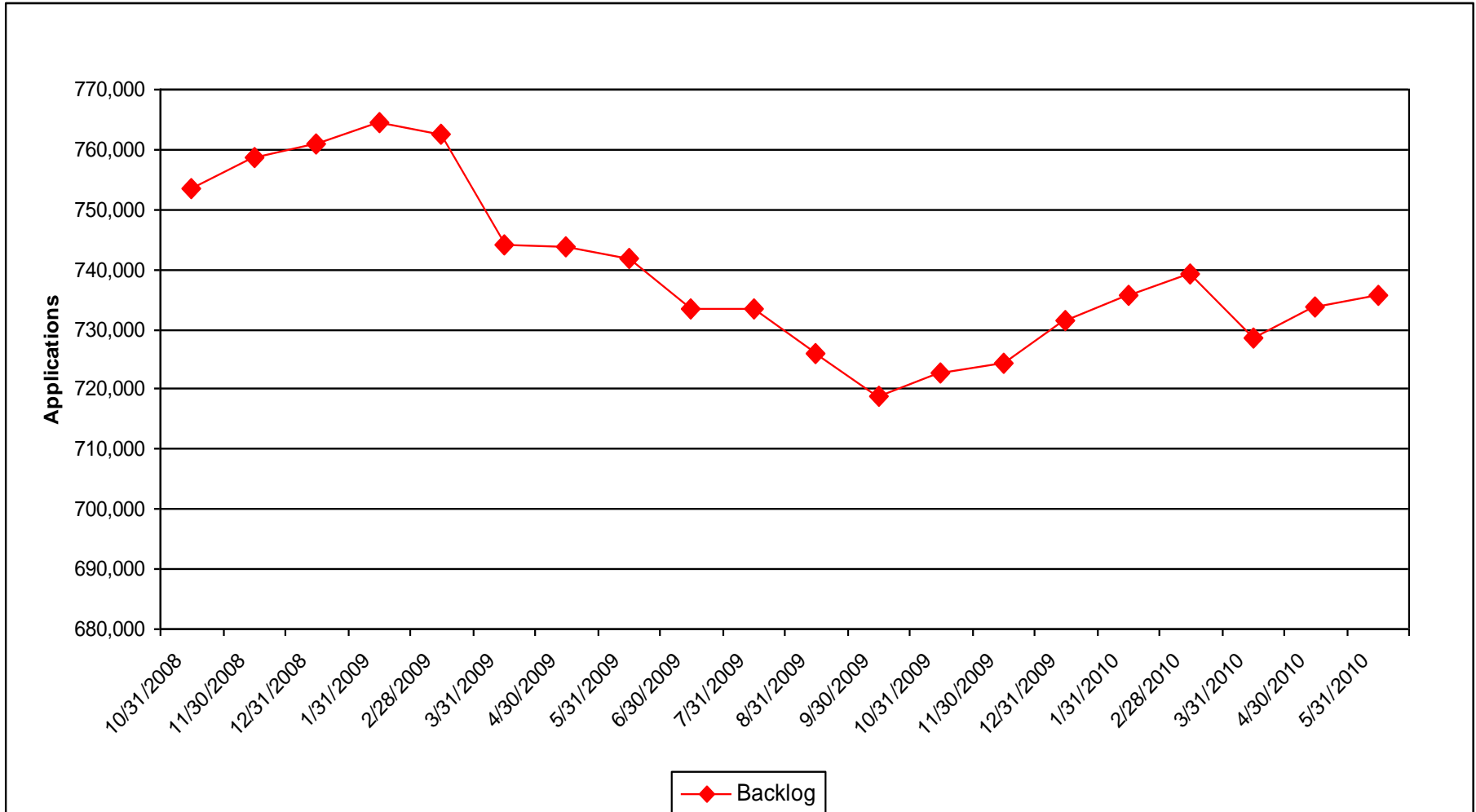


# Clerical Processing Time FY 2003 – FY 2010 (Biweekly average)





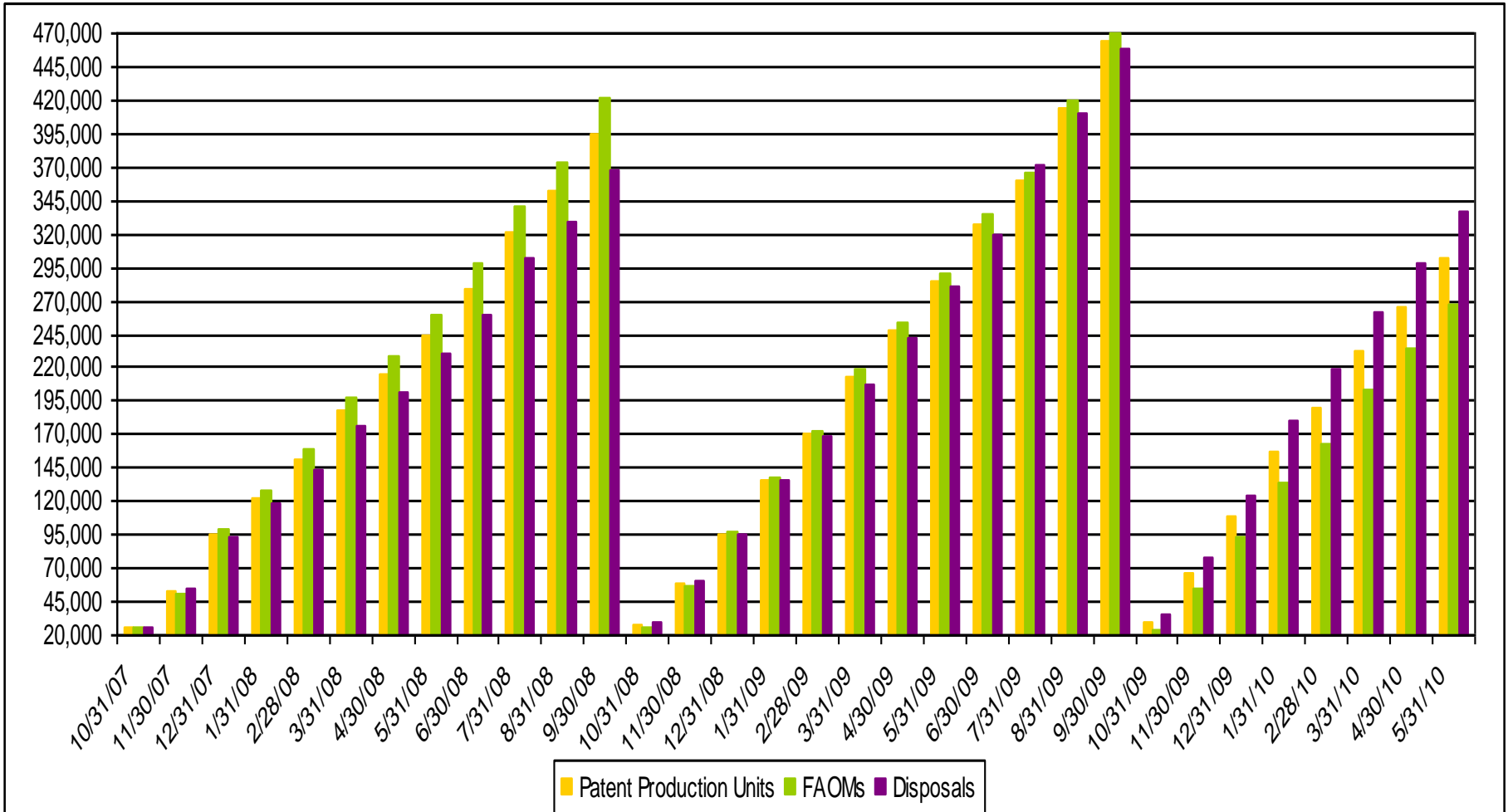
## Backlog FY 2009 – FY 2010 (year-to-date)





# Patent Production Units First Actions on Merit Disposals

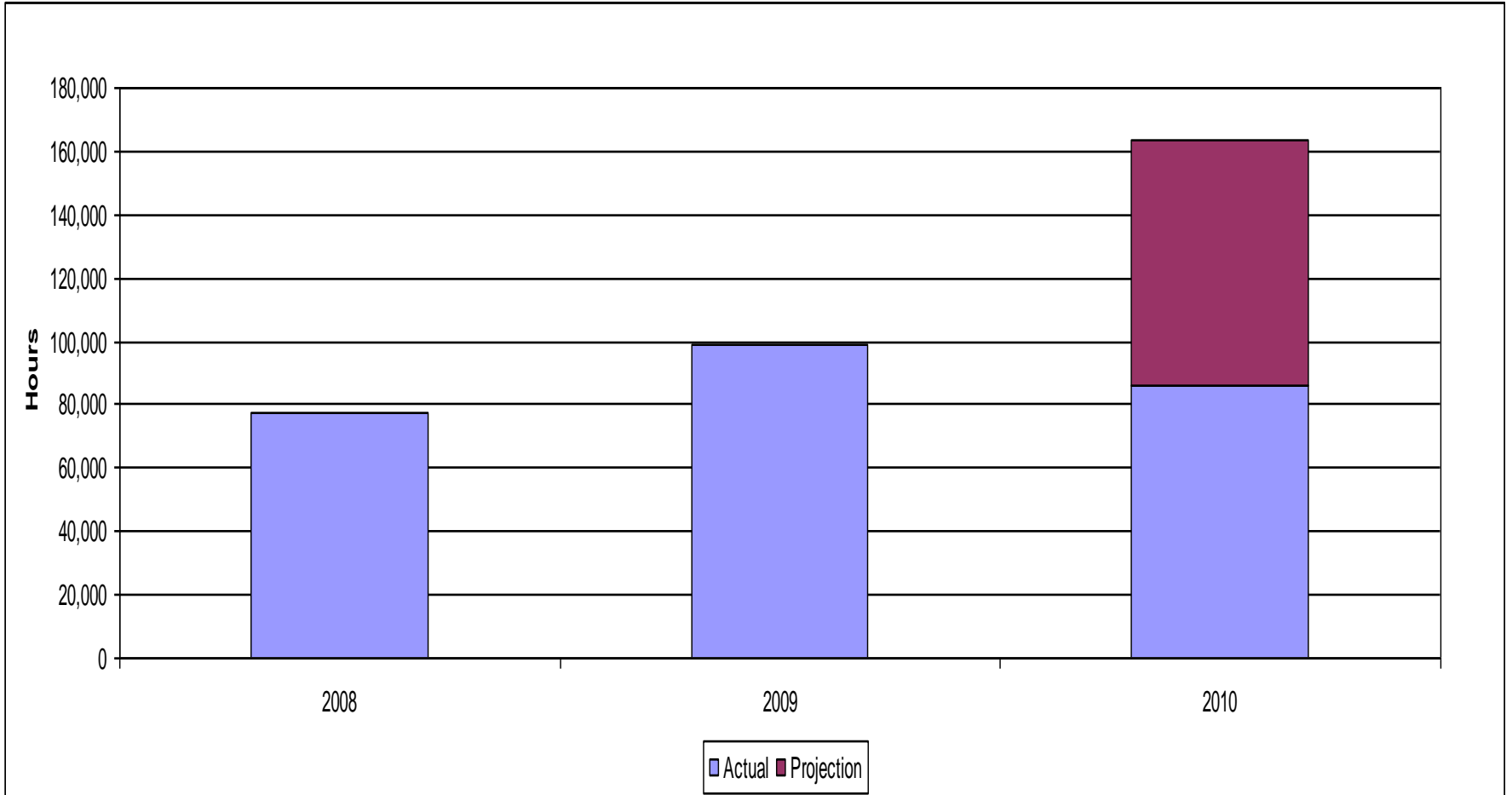
FY 2008 – FY 2010 (year-to-date by month)





# Interview Time FY 2008 – FY 2010\*

(\*Projected)



Updated Through May 22, 2010



# Board Decision Affirmance Rate FY 2000 – FY 2010 (year-to-date)

