

[54] STUFFED TOY BEAR OR SIMILAR ARTICLE

[76] Inventor: Francesca S. Hoerlein, 857 Castac, Pacific Palisades, Calif. 90272

[\*\*] Term: 14 Years

[21] Appl. No.: 293,357

[22] Filed: Aug. 17, 1981

[51] Int. Cl. .... D21-01

[52] U.S. Cl. .... D21/159

[58] Field of Search ..... D21/159

[56] References Cited  
PUBLICATIONS

Ace Toy Cat., p. 9, Panda.

Ka-Klar 1968 Cat., p. 6, upper left, No. 856/25, Teddy.

Primary Examiner—Melvin B. Feifer  
Attorney, Agent, or Firm—Lyon & Lyon

[57] CLAIM

The ornamental design of a stuffed toy bear or similar article, as shown.

DESCRIPTION

FIG. 1 is a front view of a stuffed toy bear or similar article showing my new design;

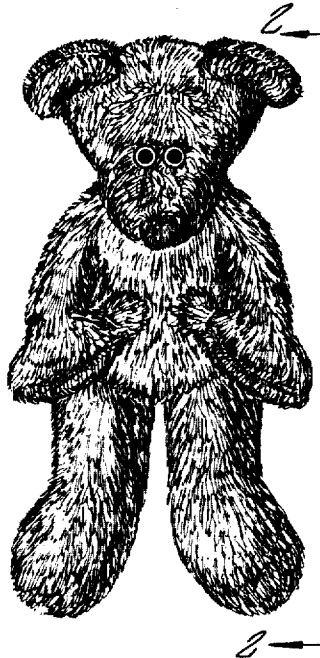
FIG. 2 is a lateral view of the toy of FIG. 1 taken on line 2-2 of FIG. 1.

FIG. 3 is a back view of the toy of FIG. 1.

FIG. 4 is a lateral view of the toy of FIG. 3 taken on line 4-4 of FIG. 3.

FIG. 5 is a top view of the toy of FIG. 1.

FIG. 6 is a bottom view of the toy of FIG. 1.



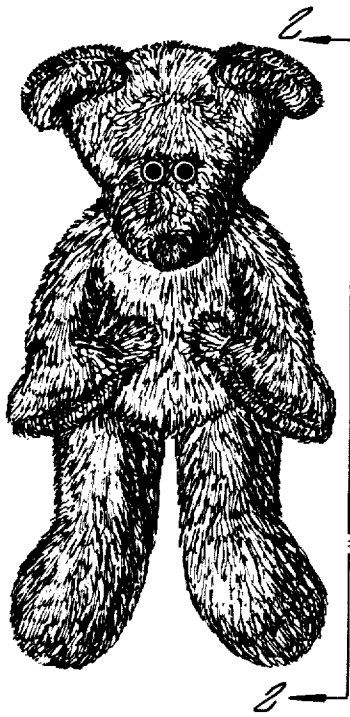


FIG. 1.



FIG. 2.

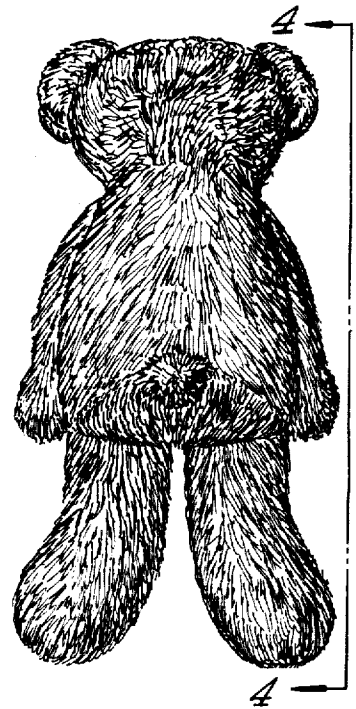


FIG. 3.



FIG. 4.

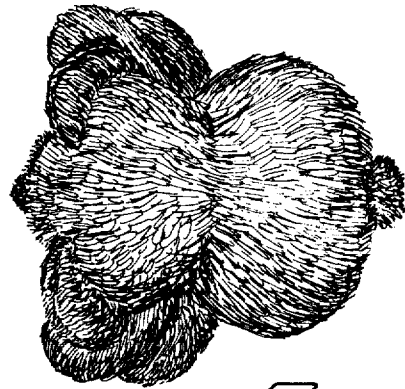


FIG. 5.



FIG. 6.