

# Trademarks Management Report

David Gooder

Commissioner for Trademarks

UNITED STATES  
PATENT AND TRADEMARK OFFICE

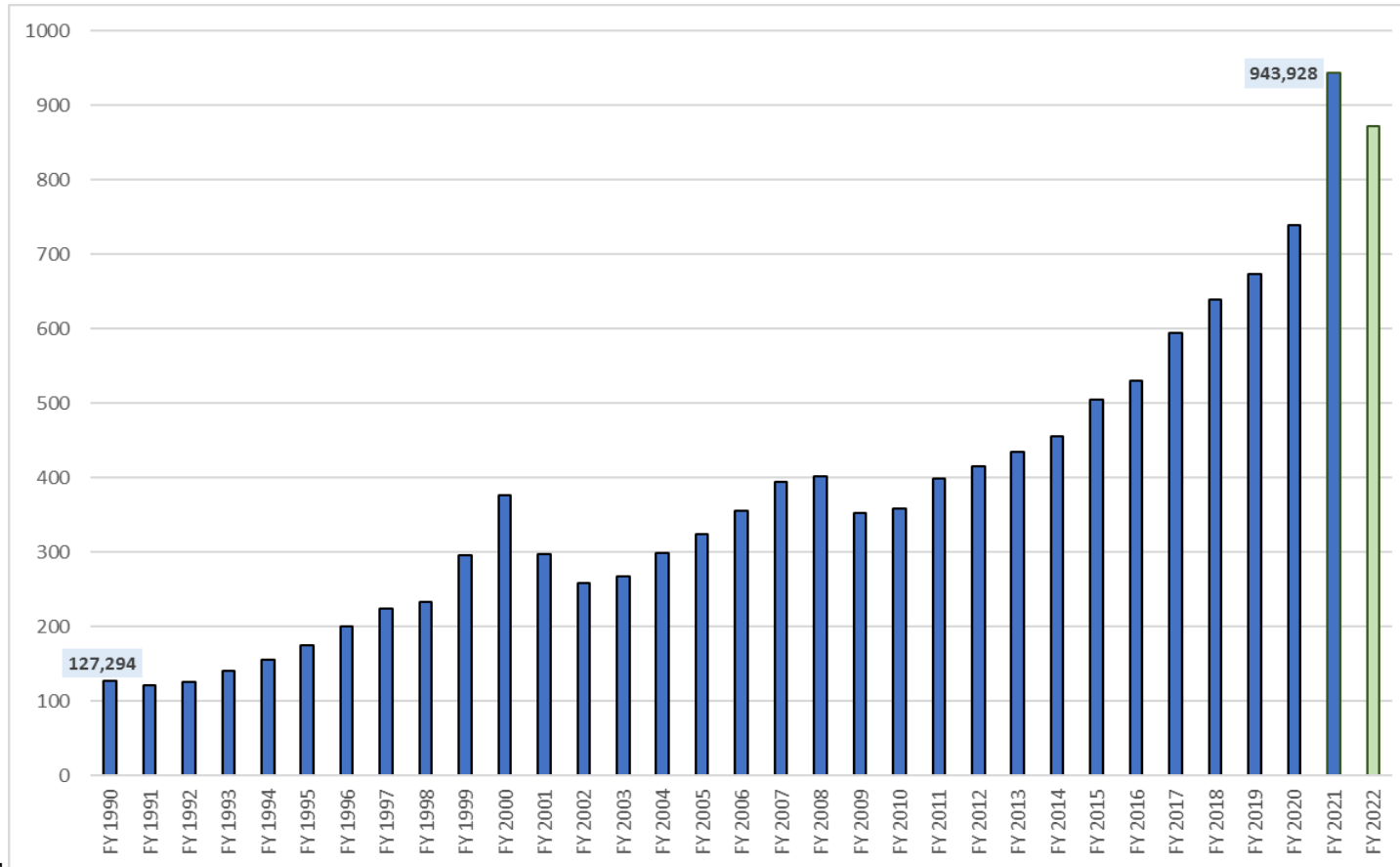


# Trademarks Management report agenda

- FY22 YTD business operations update
- Financial update (OCFO)
- Two things you might not know
- FY22 priorities updates

# Trademark filing performance

# Trademark application filing levels



## FY 2022

- 872k classes (Proj.)
- YTD:
  - -2% vs plan
  - +16% vs FY20
  - -9% vs FY21

## FY 2021

- 944k classes
- +27.5%

## FY 2020

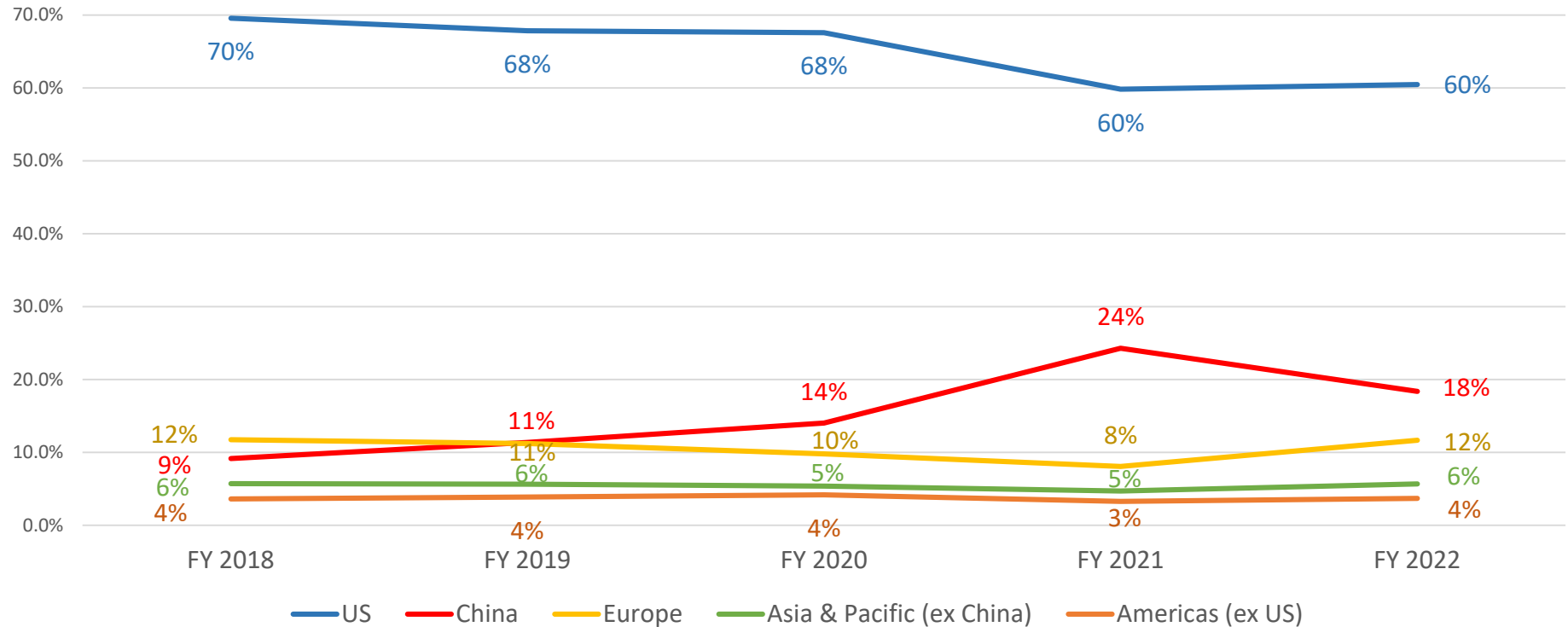
- 738k classes
- +9.5%

## Since FY 1990

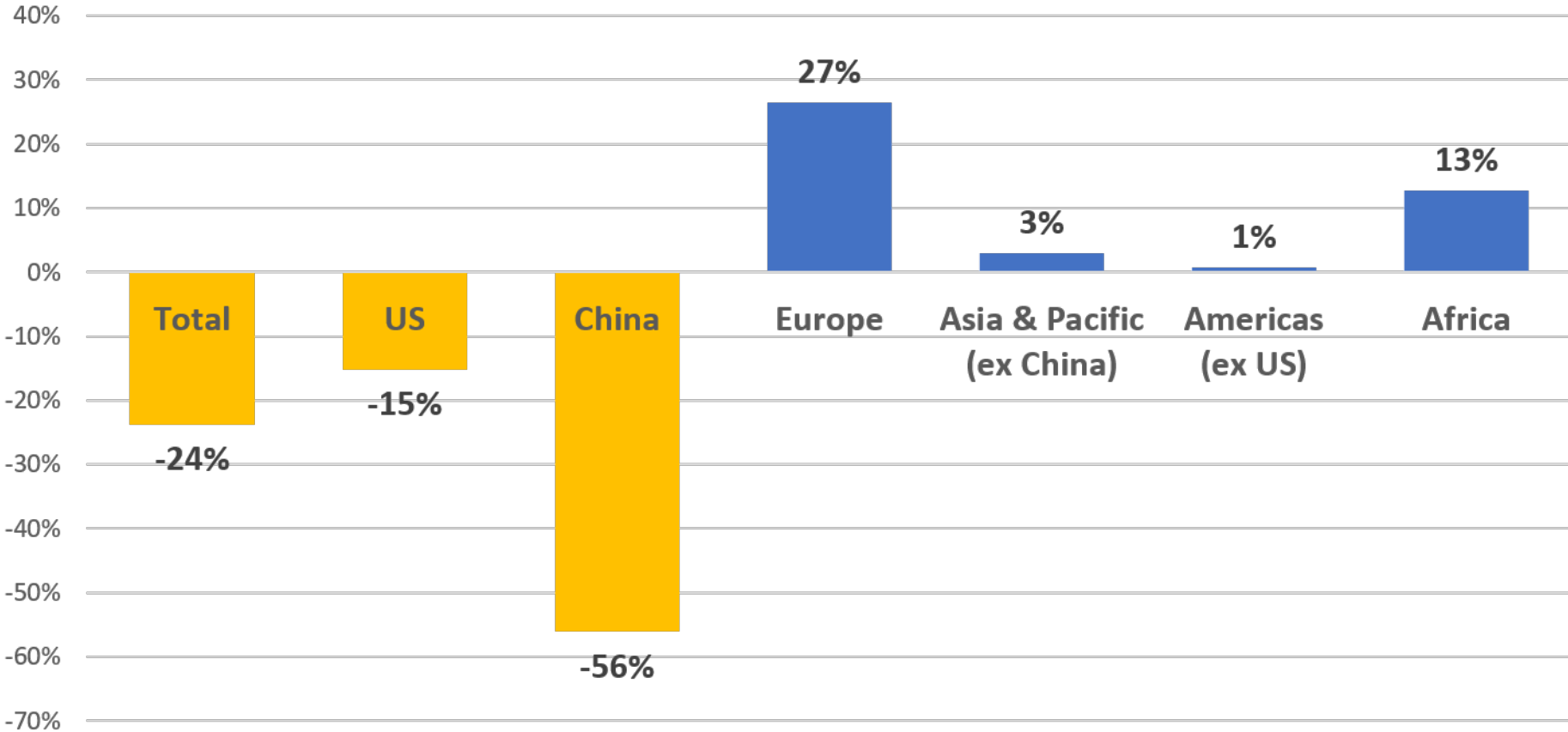
- Grown 642%
- CAGR = 6.5%



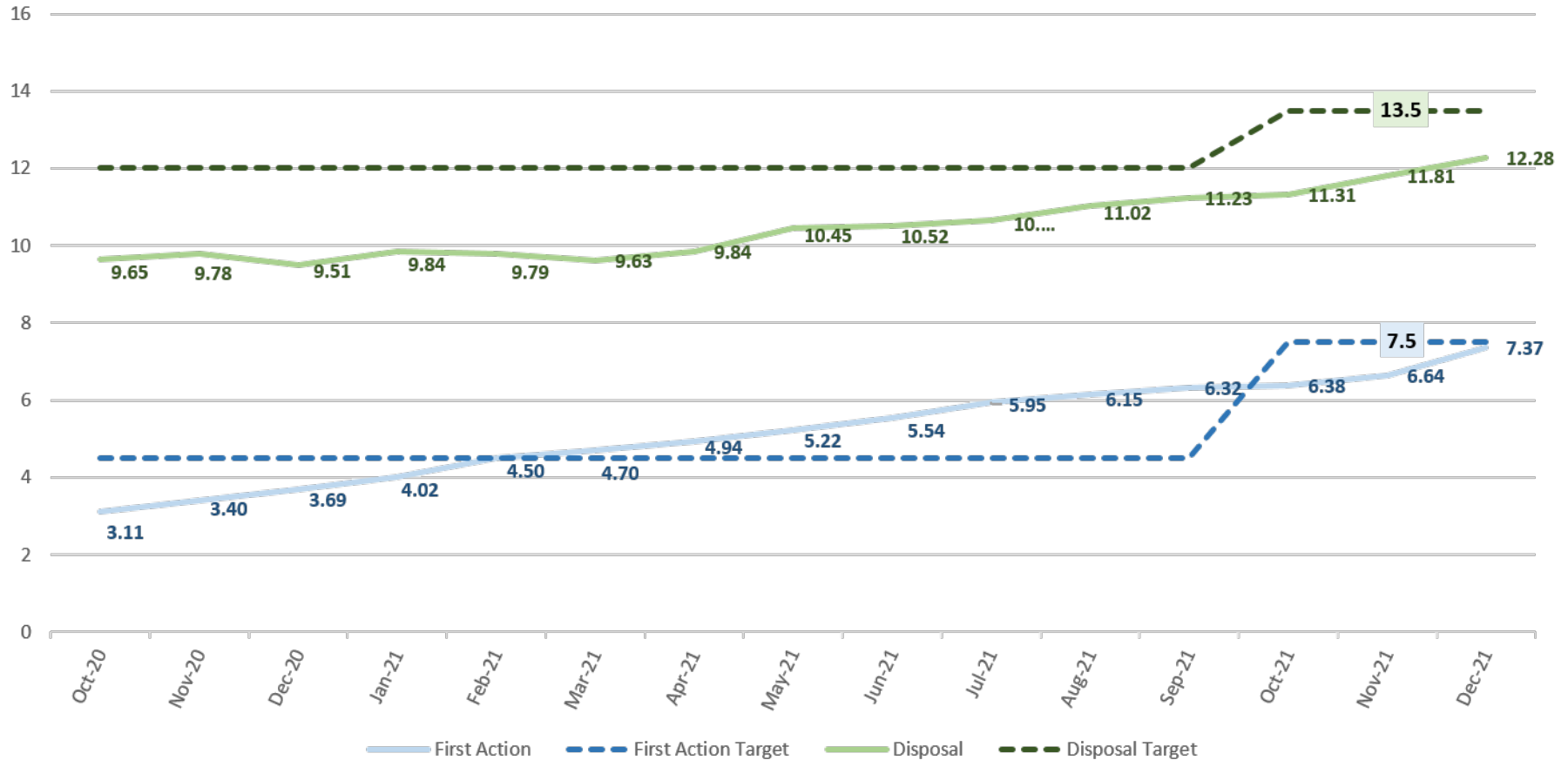
# Share of Application Classes Filed by Applicant's Domicile (FY18-FY22)



# Classes Filed: YTD FY22 Compared to FY21



# FY22 first action and disposal pendency



# Trademarks performance: quality

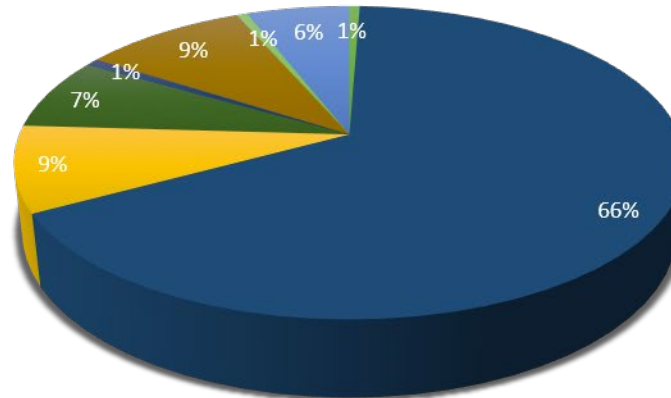
Trademarks performance measures	FY 2022 targets	FY 2022 YTD Results
<b>First action compliance</b> In-process review evaluation of the statutory bases for which the USPTO raises issues and/or refuses marks for registration based on the first office action	<b>95.5%</b>	<b>96.6%</b>
<b>Final action compliance</b> In-process review evaluation of the statutory bases for which the USPTO raises issues and/or refuses marks for registration based on the examining attorney's approval or denial of the application	<b>97.0%</b>	<b>97.2%</b>
<b>Exceptional office action</b> Measure indicating the comprehensive quality of the first office action search, evidence, writing, and decision making	<b>50.0%</b>	<b>60.2%</b>



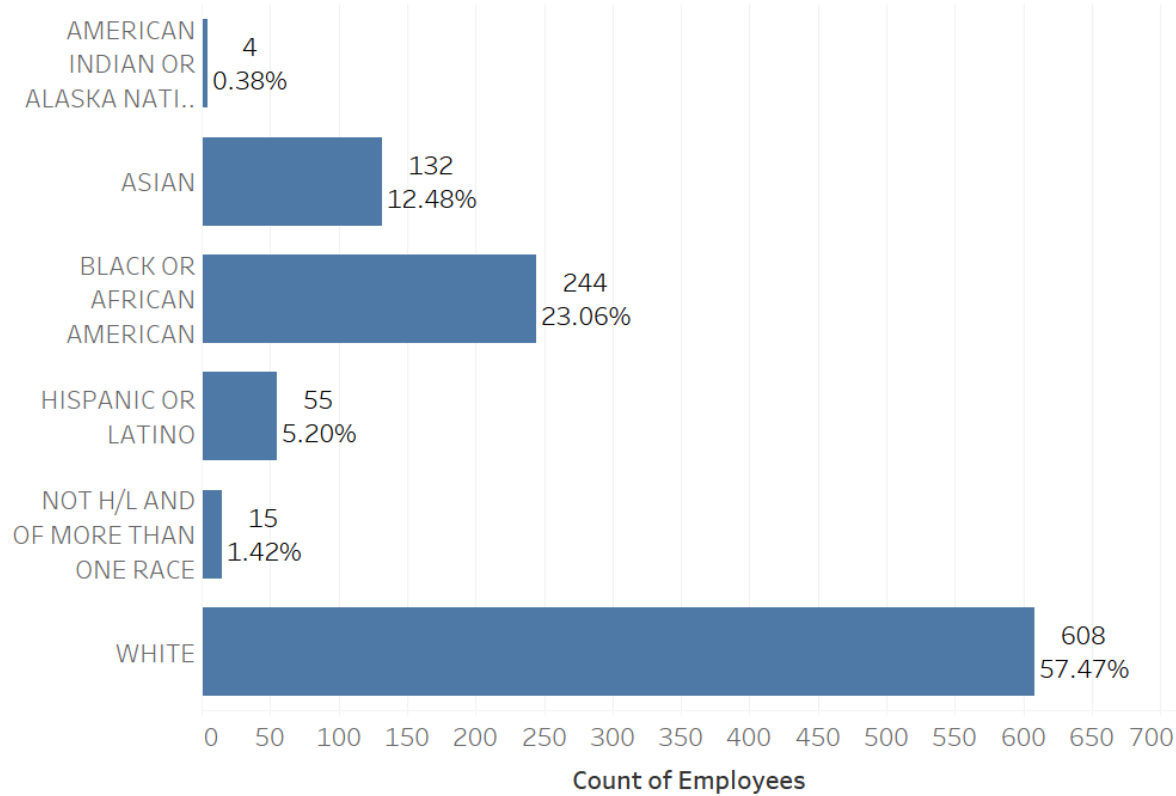
# Trademarks staffing at a glance

# Trademarks staffing

- 1,063 employees (7.5% of USPTO)
- 706 examining attorneys (66% of Trademarks)
  - 59 hires onboarded in October 2021
- Still in state of “Maximum telework”



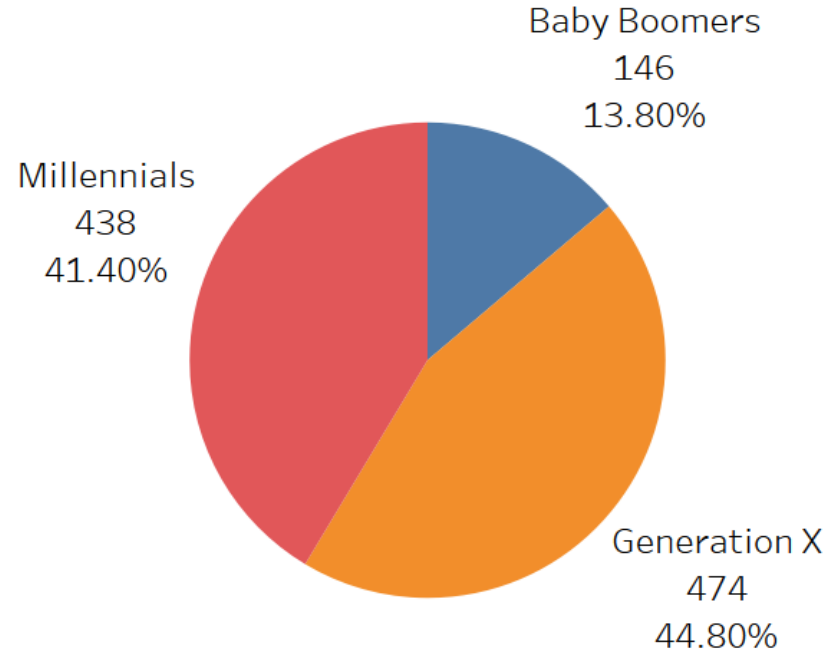
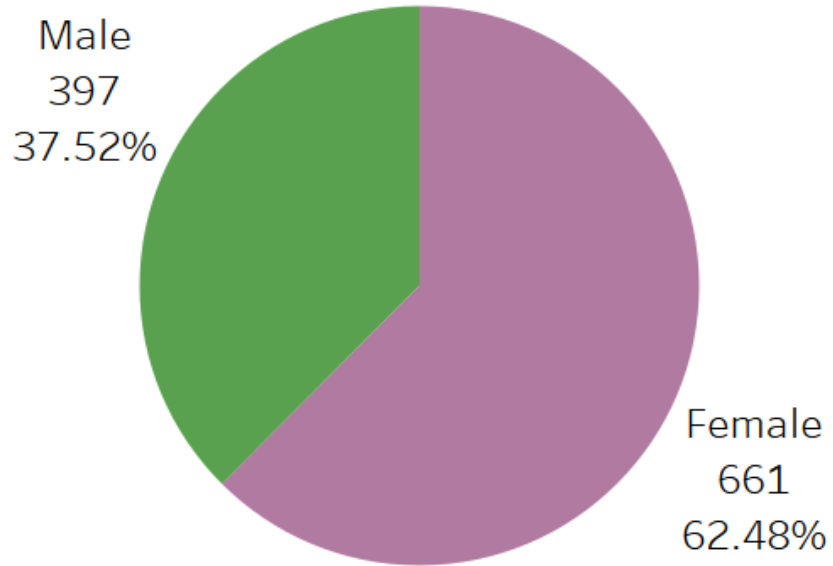
# Ethnicity/Race



Data Reflects USPTO Trademark Business Unit Employees as of Pay Period 26-2021 Produced by the Office of Human Resources HRIS Data Analytics Questions please email: CAO\_Data\_Analytics@uspto.gov



# Gender and generation distribution



# Length of Service

