

From: Annette I. Kahler [e-mail address redacted]
Sent: Monday, January 30, 2012 8:29 PM
To: SatelliteOffices
Subject: Comments re Albany-Capital Region NY for USPTO Satellite Office

Dear Mr. Khan,
I am pleased to provide the attached comments with respect to the USPTO's Satellite Office initiative. The attached letter is accompanied by 12 letters of support from key stakeholders inviting the USPTO to open its next satellite office in New York's Capital Region. This proposal is further supported by numerous other organizations in the region that have, or will, provide letters to you under separate cover.

We thank you in advance for consideration of our area as a satellite office location. To learn more about New York's Capital Region, please see the attached brochure from our Center for Economic Growth:

"Be In The Middle of Everywhere" at http://www.ceg.org/wp-content/uploads/2011/06/CEG_Broch_LR.pdf.

We look forward to hearing from you.

Best Regards,
Annette I. Kahler

Annette I. Kahler, Esq.
Heslin Rothenberg Farley & Mesiti P.C.
Intellectual Property Law
5 Columbia Circle
Albany, NY 12203
[phone redacted]
[e-mail address redacted]
www.hrfmlaw.com



Annette I. Kahler
President & Executive Director
akahler@exigent.org

January 30, 2012

United States Patent and Trademark Office
Attn: Azam Khan, Deputy Chief of Staff
Mail Stop - Office of Undersecretary and Director
P.O. Box 1450
Alexandria, Virginia 22313-1450

Sent via email: satelliteoffices@uspto.gov

**Re: Comments from Albany/Capital Region NY on Additional
USPTO Satellite Offices for the Nationwide Workforce Program**

Dear Mr. Kahn:

Working together in coordination with a strong team of colleagues from the Capital Region of New York, I am pleased to submit this response to the USPTO's request for public comments regarding future locations of satellite offices.

This response proposes **Albany, NY and the Capital Region of New York State** as an ideal location for a future USPTO satellite office as measured against all identified criteria. This proposal enjoys strong support on every level, as shown by the multitude of supporting letters that are being submitted for your consideration.

In summary, the Capital Region is a premiere site for high tech business and research, and hosts a vibrant and actively engaged intellectual property community. In addition, it offers proximity to major geographic markets, a highly qualified technical workforce, outstanding educational opportunities, a strong business environment, and excellent quality of life at an affordable cost of living.

Background on the Capital Region of New York State

- The Capital Region is located in upstate New York, and encompasses the counties immediately surrounding Albany, the capital of the State, including Albany County, Schenectady County, Rensselaer County, and Saratoga County. The Capital District is home to more than 1 million residents across more than 400,000 households.
- The Capital District is part of the larger Tech Valley of New York State, which stretches from the Canadian border south to Westchester County and contains more than 1,000 technology companies providing more than 50,000 jobs. The companies of Tech Valley have an economic impact of \$5 billion and an annual payroll of \$2 billion. These include IBM, General Electric,

Global Foundries, Sematech, and many others well known for innovation and high levels of intellectual property output.

- The region has five primary high-tech sectors: Nanotechnology, Biotechnology/Life Sciences, Energy, Information Technology, and Advanced Materials.
- Twenty-one (21) colleges and universities are located in the region, with 77,000 students, including the State University of New York at Albany, the College of Nanoscale Science and Engineering, Rensselaer Polytechnic Institute, Union College, Sage, and many others offering cutting-edge engineering and science-oriented curricula. There are 73 school districts in the area, with 90% rate of high school graduation, many with advanced science and technology programs, including the region's Tech Valley High School where 48% of the students are studying for STEM-related careers.
- At our area colleges and universities, there are 17 business incubators providing support for a strong culture of entrepreneurship in the region.
- Albany International Airport has 71 daily departures, and the Albany-Rensselaer Amtrak station is the ninth busiest in the nation.
- There are numerous efficient and affordable means of transportation between Albany, NY and the USPTO headquarters in Alexandria, VA, by plane, train or automobile. Likewise, the Capital Region is only a few short hours away by car or train from several major cities in the Northeast and Canada, including New York City, Boston, Philadelphia, and Montreal.

Patent Activity in New York State

New York is second only to California in patent volume. As an example, the table below shows the rankings of the top states in U.S. patents issued cumulatively from 1999 to 2009.

	State	U.S. Patents Issued FY1999 - FY2009
1	California	218,168
2	New York	65,260
3	Texas	64,043
4	Michigan	39,879
5	Massachusetts	39,304
6	Illinois	38,999
7	New Jersey	36,647
8	Ohio	34,886
9	Pennsylvania	33,325
10	Florida	30,147
11	Minnesota	29,870
12	Washington (State)	29,864

The Capital Region and larger Tech Valley Region of New York State, both enjoy higher than average rates of patent productivity when patent activity is normalized against population density.

In addition, with nearly 4,000 registered attorneys and agents, New York State is also second only to California in its number of licensed patent professionals. Moreover, six of the top 10 states in number of patent practitioners are located in the Northeast and Mid-Atlantic regions of the U.S. The Capital Region of New York represents a geographically desirable location for tapping into this network of professionals, and provides a reasonable cost of living alternative while retaining good proximity to northern Virginia and other key geographies.

Conclusion

In summary, the Albany, NY/Capital Region area is an outstanding location for a USPTO satellite office, which will fully support the USPTO's objectives of (1) increasing outreach activities to better connect with patent filers and innovators; (2) enhancing patent examiner retention; (3) improving recruitment of examiners; (4) decreasing patent applications in the queue; and (5) improving the quality of patent examination.

Key stakeholders in New York's Capital Region stand ready to work in cohesive and coordinated fashion with your office to determine the logistical details of locating a satellite office in our community. Attached with this letter you find the following additional letters of support:

Congressman Paul D. Tonko, 21st District, New York
Gerald D. Jennings, Mayor, City of Albany
James Dias, Ph.D., Vice President of Research, University at Albany
Laura Schweitzer, Ph.D., President, Union Graduate College
F. Michael Tucker, President and CEO, Center for Economic Growth
Robert E. Blackman, Vice President, Realty USA; CEG Board Chair
Michael Relyea, President, Luther Forest Technology Campus
Jeff Rothenberg, Managing Partner, Heslin Rothenberg Farley & Mesiti
Thomas Keane, Ph.D., Director, INVEST Incubator
Jim Connolly, President and CEO, Ellis Medicine
Walter Robb, President, Vantage Management
Victor Cardona, Cleantech Practice Group, Heslin Rothenberg Farley & Mesiti

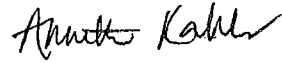
In addition to the attached letters, you will find that many letters of support from throughout the Capital Region are being provided directly to your office under separate cover, including from the following:

Senator Kirsten Gillibrand, United States Senator, New York
Albany/Colonie Chamber of Commerce
General Electric
Law Firm of Schmeiser, Olsen and Watts
Rensselaer Polytechnic Institute
RPI Emerging Ventures Ecosystem (EVE) Program
Empire State Development and NYSTAR
Eastern New York Angels (ENYA)

We expect that numerous other letters in support of our region are being provided as well.

Thank you for the opportunity to provide these comments. I welcome you to contact me for any questions or further information about Albany, NY and the Capital Region as a future USPTO satellite office site. Stakeholders in our region would welcome you to visit our area to discuss the satellite office program. We look forward to hearing from you.

Respectfully Submitted,

A handwritten signature in black ink that reads "Annette Kahler". The signature is written in a cursive style with a large initial "A" and a long, sweeping underline.

Annette I. Kahler
(518) 852-1401
akahler@exigent.org

PAUL TONKO
21ST DISTRICT, NEW YORK

COMMITTEE ON
THE BUDGET

COMMITTEE ON
SCIENCE, SPACE, AND TECHNOLOGY



Congress of the United States
House of Representatives
Washington, DC 20515-3221

422 CANNON HOUSE OFFICE BUILDING
WASHINGTON, DC 20515
(202) 225-5076

DISTRICT OFFICES:
61 COLUMBIA STREET
4TH FLOOR
ALBANY, NY 12210
(518) 465-0700

61 CHURCH STREET
ROOM 309
AMSTERDAM, NY 12010
(518) 643-3400

105 JAY STREET
ROOM 15
SCHENECTADY, NY 12305
(518) 374-4547

January 30, 2012

United States Patent and Trademark Office
Attn: Azam Khan, Deputy Chief of Staff
Mail Stop - Office of Undersecretary and Director
P.O. Box 1450
Alexandria, Virginia 22313-1450

**Re: Comments on Additional USPTO Satellite Offices for the
Nationwide Workforce Program (Docket No. PTO-C-2011-0066)**

Dear Mr. Kahn:

I write to urge the United States Patent and Trademark Office to select the Capital Region of New York State as the next location for a satellite office.

It is my pleasure to represent Albany, New York, and the greater Capital Region in Congress. As you may be aware, the Albany, New York area has been the center of significant investment in the high-tech and clean energy sectors over the past ten years. This investment has led to the Capital Region standing as one of the fastest growing markets for green jobs in the country.

As an engineer by training, I have been focused on creating an environment where investment in innovation and research can have the greatest impact, helping to spur economic development and improve quality of life. By locating a satellite office of the USPTO in the Albany area, it would give further credibility and opportunity for innovation and research. In addition, the location of a USPTO office in Albany will take advantage of the rich resources of this area, including previous investment from both the public and private sector in nanotechnology and clean energy, as well as a rich academic environment that boasts some of the nation's finest programs.

I encourage you to visit and tour Albany and the surrounding Tech Valley and hope that we may be able to celebrate the opening of a new satellite office of the USPTO in the near future. Your consideration of this request – consistent with current laws, rules and agency policy – is appreciated.

Sincerely,

PAUL D. TONKO
Member of Congress

PDT/dtc



OFFICE OF THE MAYOR
CITY OF ALBANY
CITY HALL
24 EAGLE STREET
ALBANY, NEW YORK 12207

GERALD D. JENNINGS
MAYOR



January 30, 2012

United States Patent and Trademark Office
Attn: Azam Khan, Deputy Chief of Staff
Mail Stop - Office of Undersecretary and Director
P.O. Box 1450
Alexandria, Virginia 22313-1450

Sent via email: satelliteoffices@uspto.gov

**Re: Comments on Additional USPTO Satellite Offices for the
Nationwide Workforce Program (Docket No. PTO-C-2011-0066)**

Dear Mr. Kahn:

As the Mayor of the City of Albany, I am proud to support the efforts to bring a USPTO satellite office to New York's Capital Region.

The City of Albany is a vibrant epicenter of high technology development and businesses and the heart of New York's Tech Valley. We offer a highly qualified technical workforce, outstanding educational opportunities, a strong business environment, and excellent quality of life at an affordable cost of living.

As intellectual property protection is a critical component of building a strong innovation economy, Albany stands behind the USPTO's efforts to increase the quality of patents granted in the U.S. and decrease the volume of patent applications in the queue. Bringing a satellite office to Albany would enable the USPTO to leverage our area's core competencies in nanotechnology, clean energy, life sciences, information technology, and advanced materials.

As you move forward with satellite office location selection, we invite you to visit us in Albany to see our capabilities first-hand and discuss further details.

Sincerely,

Gerald D. Jennings
Mayor, City of Albany



January 30, 2012

United States Patent and Trademark Office
Attn: Azam Khan, Deputy Chief of Staff
Mail Stop - Office of Undersecretary and Director
P.O. Box 1450
Alexandria, Virginia 22313-1450

Sent via email: satelliteoffices@uspto.gov

**Re: Comments on Additional USPTO Satellite Offices for the
Nationwide Workforce Program (Docket No. PTO-C-2011-0066)**

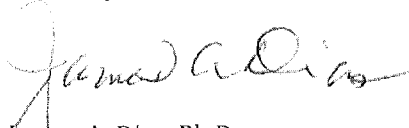
Dear Mr. Kahn:

We write in support of bringing a USPTO satellite office to Albany or the surrounding area.

The University at Albany is proud to be one of the six high intensity research centers in the State University of New York's 64-campus university system. The scientific research programs at UAlbany are extensive and expanding. By means of example, most recently UAlbany's RNA Institute has been awarded \$2M by the Governor's Regional Economic Development Council to promote biotech translational research, and UAlbany's Cancer Research Center at its East Campus will receive \$1M toward the development of a biotech corridor. These leading edge programs, together with others in our research portfolio, bring world class expertise to the life sciences community in Albany, NY. Albany is a cost effective location for a USPTO satellite, with easy access to major metropolitan areas of Boston and New York City. Many of our scientists travel to Washington DC regularly to serve on National Review Panels, taking either air or train travel.

I applaud the efforts of the USPTO to strive for high quality patent output and faster processing of applications through the introduction of new satellite offices. Looking at the broad ranging benefits of our region, I am confident the Capital Region of New York is well positioned to open and operate a productive office that will recruit and retain the necessary scientific and technical talent. Thank you for your consideration of our area for the next USPTO satellite office site.

Sincerely,



James A. Dias, Ph.D.
Vice President for Research



Office of the President

United States Patent and Trademark Office
Attn: Azam Khan, Deputy Chief of Staff
Mail Stop - Office of Undersecretary and Director
P.O. Box 1450
Alexandria, Virginia 22313-1450

Sent via email: satelliteoffices@uspto.gov

**Re: Comments on Additional USPTO Satellite Offices for the
Nationwide Workforce Program (Docket No. PTO-C-2011-0066)**

Dear Mr. Kahn,

I am the president of Union Graduate College in Schenectady New York. Union Graduate College is one of the twenty-one colleges and universities located in the Capital Region of Upstate New York. The intent of this letter is to support the initiative of Annette I. Kahler who is leading the Region's efforts to apply for consideration as a future location of a USTPO satellite office.

With a graduate program in engineering developed in conjunction with General Electric dating back more than a hundred years to 1905, Union Graduate College is now classified by Carnegie as Private/Master's/Medium. The Graduate College has graduate programs in Business (Management and Healthcare Management), Education, Engineering (Mechanical/Electrical [Energy in 2012/13]), Bioethics, English and History that were previously part of Union College (ranked US News & Report Top 50 Liberal Arts). It is a fully independent private college now comprised of four graduate and professional schools — the programs each have the highest levels of accreditation available and are viewed as having among the most selective graduate programs in the Capital Region of Upstate New York. The Bioethics and MBA/Healthcare programs have a national draw.

Union Graduate College is a member of Union University, a five school consortium located in the Capital Region of New York State. Well known for its members' interdisciplinary joint degree programs, the successful joint degree programs date

back several decades. A new MS in engineering/ JD to support the efforts of development of intellectual property in the Region, is being actively sought by Union Graduate College and Albany College of Law.

Union Graduate College supports the efforts of Innogen, one of seventeen (17) business incubators providing support for a strong culture of entrepreneurship in the region.

I hope that you will consider our region for development of the satellite. In addition to my role as college president, I serve on the Executive Committee of the Board for the Council for Economic Growth (CEG) of Upstate New York and as one of twenty members of the Schenectady Stakeholders, a group of CEOs who have made commitments of time and money to the growth of Schenectady. I provide this information to you to give you a sense of the excitement and momentum the Region has. I know you will find the environment here highly supportive of your efforts.

Sincerely,

A handwritten signature in cursive script that reads "Laura Schweitzer".

Laura Schweitzer, PhD
President



CENTER FOR ECONOMIC GROWTH
anything's possible™

January 30, 2012

United States Patent and Trademark Office
Attn: Azam Khan, Deputy Chief of Staff
Mail Stop - Office of Undersecretary and Director
P.O. Box 1450
Alexandria, Virginia 22313-1450

Sent via email: satelliteoffices@uspto.gov

**Re: Comments on Additional USPTO Satellite Offices for the
Nationwide Workforce Program (Docket No. PTO-C-2011-0066)**

Dear Mr. Kahn:

The Center for Economic Growth (CEG) joins with our colleagues to strongly support the establishment of a USPTO satellite office in New York's Capital Region.

Since 1987, CEG has been committed to fostering visionary economic growth throughout the 11-county Capital Region, as well as a significant portion of the Tech Valley corridor. As a private, not-for-profit organization we work with a diverse group of members and partners to advance the ability of the region and its assets to succeed in the global marketplace. With a focused and strategic approach we work to:

GROW local companies by offering tactical business development strategies and services;

ATTRACT opportunities for technology investment and expansion throughout Tech Valley and

PREPARE communities to achieve their desired economic growth while enhancing the region's excellent quality of life.

The Capital Region of New York offers a key geographic advantage of being in the middle of everywhere in the U.S.'s northeast corridor. Located 150 miles north of New York City, 165 miles west of Boston, and 215 miles south of Montreal, the Capital Region is proximate to major hubs of high tech industry and intellectual property development.

CEG commits to provide its full support to opening a successful USPTO satellite office in the Capital Region. Thank you for the opportunity to provide these comments.

Very truly yours,

F. Michael Tucker
President and CEO

SENT VIA EMAIL

SUBJECT: Comments on additional USPTO Satellite Offices for the
Nationwide Workforce Program-Docket No. PTO C-2011-0066

Dear Mr. Kahn,

I am involved in many of the regions various initiatives for growth. Let me offer just a couple to give you some background:

Current Board Chair of the Center for Economic Growth

Angel Investor in several local start-ups

Member of Schenectady Stakeholders

Board Member of Fuller Road Management Corporation--(a component of College of
Nanoscale Science and Engineering--CNSE)

Board member-Tech Valley Connects

It is very important that our region receives very strong consideration for your development of this important satellite. Our region is bursting with growth initiatives and the placement of your facility will be both an asset to this region and I know that it will be an active office that you will be proud to have here.

There is little question that the environment here is conducive to your mission.

Thank you for your consideration and I hope to be a part of the welcoming committee when you are open for business!!!!

Most respectfully,

Robert E. Blackman

Cell: 518-461-7228

Email: rblackman@realtyusa.com



January 30, 2012

United States Patent and Trademark Office
Attn: Azam Khan, Deputy Chief of Staff
Mail Stop - Office of Undersecretary and Director
P.O. Box 1450
Alexandria, Virginia 22313-1450

Sent via email: satelliteoffices@uspto.gov

**Re: Comments on Additional USPTO Satellite Offices for the
Nationwide Workforce Program (Docket No. PTO-C-2011-0066)**

Dear Mr. Kahn:

I am pleased to submit this response to the USPTO's request for public comments on "Additional USPTO Satellite Offices for the Nationwide Workforce Program", in which the USPTO is requesting information on potential cities and regions for future locations of satellite offices.

This response provides information on the **Albany/Capital Region of New York State**, which is an ideal location for a future USPTO satellite office as measured against all identified criteria.

In summary, the Capital Region is a premiere site for high tech business and research, and hosts a vibrant and actively engaged intellectual property community. In addition, it offers proximity to major geographic markets, a highly qualified technical workforce, outstanding educational opportunities, a stable business environment, and excellent quality of life at an affordable cost of living.

As the President of the Luther Forest Technology Campus and the past Executive Director of New York State's office of Science, Technology and Academic Research (NYSTAR), I have seen firsthand the important role the Capital Region (Tech Valley) plays in patent development. The Tech Valley Region is home to GE Global Research and GLOBALFOUNDRIES. These two industry titans have the ability to produce and spin off valuable intellectual property that continues to lead to job creation in our area and around the world.

I strongly support the application and information already sent to you on behalf of our region. While Science, Technology, Engineering and Mathematics are critical knowledge paths for American competitiveness, it is equally important to strategically locate the resources such as a USPTO Satellite Office where it will serve the most good. Strategic placement of the office in Tech Valley not only provides access, but it will serve as a catalyst for knowledge and understanding of the often intimidating world of patents.

The application provides information on the statistics and reasoning for our region's request. What you want see in statistics is the passion of the people in our region who continue to work together and

advocate for the resources that allow us to remain competitive. There is no doubt that should this office be located in Tech Valley, it will be utilized to its maximum potential and beyond. Thank you for your consideration and attention to our request. Should you have any questions or would like to reach me by phone, please feel free to contact me at (518)-424-4248.

Best Wishes,

A handwritten signature in black ink, appearing to read "Mike Relyea", with a long horizontal flourish extending to the right.

Mike Relyea

President

Luther Forest Technology Campus, EDC

www.Lutherforest.org

518-587-0945

Robert E. Heslin
Jeff Rothenberg
Kevin P. Radigan
Susan E. Farley
Nicholas Mesiti
Philip E. Hansen*
Blanche E. Schiller
Wayne F. Reinke
David P. Miranda
Victor A. Cardona
Brett M. Hutton
John W. Boger

* Patent Agent
† HK and UK Patent Attorney

HESLIN ROTHENBERG FARLEY & MESITI P.C.

INTELLECTUAL PROPERTY LAW
PATENTS · TRADEMARKS · COPYRIGHTS

Attorneys at Law

5 Columbia Circle
Albany, New York 12203
Telephone: (518) 452-5600
Facsimile: (518) 452-5579
www.hrfnlaw.com

January 30, 2012

Kathy Smith Dias
David A. Pascarella
Alana M. Fuierer
Shanna K. O'Brien
Caroline B. Ahn
Kellie S. Fredericks*
Andrew K. Gonsalves
Erica M. Hines
Shahrokh Falati
Garth H. Mashmann
Matthew M. Hulihan
Melvin Li*†
Dmitry Andreev
Teige P. Sheehan
Rachel Leah Pearlman
Kristian E. Ziegler
Jacquelyn A. Graff

Of Counsel
Jill M. Breedlove
Annette I. Kahler
George S. Blasiak

United States Patent and Trademark Office
Attn: Azam Khan, Deputy Chief of Staff
Mail Stop - Office of Undersecretary and Director
P.O. Box 1450
Alexandria, Virginia 22313-1450

Sent via email: satelliteoffices@uspto.gov

**Re: Comments on Additional USPTO Satellite Offices for the
Nationwide Workforce Program (Docket No. PTO-C-2011-0066)**

Dear Mr. Khan:

I write to you as a former USPTO patent examiner, and now the managing partner of the largest IP law firm in upstate New York and the Chair of the Technology Executive Council for the Center for Economic Growth (CEG) in Albany, NY.

It is with great enthusiasm that I fully support and endorse the comments submitted by my colleague Annette Kahler and many others proposing **Albany, NY and the Capital Region of New York State** as an ideal location for a future USPTO satellite office.

While studying at George Washington University Law School I began my career in patent law as an examiner with the USPTO. The experience that I received was unparalleled and prepared me for a long and successful career in intellectual property. Due to my personal experience as a patent examiner, I believe strongly that nationalizing the USPTO workforce through the opening of satellite offices will greatly benefit the entire patent system, and that the Albany/Capital Region of New York is an ideal site.

The Capital Region which is home to Rensselaer Polytechnic Institute, the oldest technological university in the US, the Global Research Center of General Electric, the College of Nanoscale Science and Engineering that houses the most advanced 200mm/300mm wafer facilities in the academic world and recently attracted Sematech, the semiconductor industry R&D consortium, and a new Global Foundries chip fabrication facility, is increasingly recognized, both nationally and internationally, as a premiere site

for high tech business and research. President Obama has twice visited to showcase our region as a model of successful public- academic- corporate collaboration in the innovation economy.

The region also hosts a vibrant and actively engaged intellectual property community, and a law school that offers a concentration in IP. Many of the 32 attorneys and patent agents in our firm, for example, graduated from Albany Law School.

In addition, the Capital region offers proximity to major geographic markets, a highly qualified technical workforce, outstanding educational opportunities, a stable business environment, and excellent quality of life at an affordable cost of living.

As the USPTO implements the provisions of the America Invents Act and we enter a new era of patent practice, I urge you to consider the Albany New York/Capital Region as a viable and attractive location for a satellite office.

Sincerely,

A handwritten signature in black ink that reads "Jeff Rothenberg". The signature is written in a cursive style with a prominent underline at the end.

Jeff Rothenberg



January 30, 2012

United States Patent and Trademark Office
Attn: Azam Khan, Deputy Chief of Staff
Mail Stop - Office of Undersecretary and Director
P.O. Box 1450
Alexandria, Virginia 22313-1450

Sent via email: satelliteoffices@uspto.gov

Re: Comments on Additional USPTO Satellite Offices for the Nationwide Workforce Program (Docket No. PTO-C-2011-0066)

Dear Mr. Kahn:

With this letter I join with many of my colleagues in the Capital Region of New York to support the establishment of a USPTO satellite office in our region.

I write to you in my capacity as Director of the **Incubator for New Ventures in Emerging Sciences and Technologies (INVEST)** located at **Russell Sage College** in Troy, New York. INVEST is an exceptionally well equipped facility, offering 21 wet-lab workstations suitable for nanotechnology, energy, pharmaceutical and biotechnology clients. A separate wing has office suites available to users of lab space and flexible for "dry" ventures in IT or other fields and micro-enterprise. In addition to my role as Director of INVEST, I also direct the college's Laboratories for Interdisciplinary Studies in Emerging Sciences (ISES).

As we grow our nation's innovation economy and encourage entrepreneurs to start new businesses, it is imperative that we have a strong and efficient patent system. For this reason, I support the USPTO's efforts to streamline and improve the quality of our IP processes. Locating a USPTO satellite office in the Capital Region of New York would be an important step and a great boost for our region. Thank you for your consideration.

Sincerely,

Thomas C. Keane, Ph.D.

Associate Professor and Scientist, Department of Chemistry and Biochemistry
Founder, Director and Academic Liaison, INVEST @ Sage
(Incubator for New Ventures in Emerging Sciences and Technologies)
Founder and Director, ISES Labs @ Sage
(Laboratories for Interdisciplinary Studies in Emerging Sciences)

Russell Sage College
<http://www.sage.edu/invest>

Annette I. Kahler

From: Annette I. Kahler
Sent: Monday, January 30, 2012 5:45 PM
To: Annette I. Kahler
Subject: FW: #USTPO Satellite Office

From: **Connolly, Jim** <ConnollyJ@ellismedicine.org>
Date: Sat, Jan 28, 2012 at 2:47 PM
Subject: USTPO Satellite Office
To: satelliteoffices@uspto.gov
Cc: Laura Schweitzer <schweidl@uniongraduatecollege.edu>

Dear Mr. Kahn,

I am the president of Ellis Medicine in Schenectady New York. Ellis is the sole community hospital for the Schenectady region. The intent of this letter is to support the initiative of Annette I. Kahler who is leading the Region's efforts to apply for consideration as a future location of a USTPO satellite office.

Ellis Medicine was the product of a three hospital merger in Schenectady - a merger accomplished within 10 months and characterized as "seamless" by the local newspapers. We currently employ over 3300 as a result of that consolidation with few people having lost their jobs. Since that merger Ellis has sought to be at the leading edge of innovation, most recently in the area of population health where our focus is to help sustain people's health and keep them in their homes and out of our ER and hospital. Accomplishing this on a large scale with such high prevalence of chronic disease in the American population requires creative application of advanced technologies. This kind of innovation and creativity is most frequently carried out at the local community level. Among other efforts, Ellis Medicine supports the efforts of Innogen, one of seventeen (17) business incubators providing support for a strong culture of entrepreneurship in the region which will help sustain this creativity.

I hope that you will consider our region for development of the satellite. In addition to my role as hospital president, I serve on many business groups and the Board of the Schenectady Chamber of Commerce and was one of the founders of the Schenectady Stakeholders, a group of CEOs who have made commitments of time and money to the growth of Schenectady. I provide this information to you to give you a sense of the excitement and momentum the Region has. I know you will find the environment here highly supportive of your efforts.

Jim Connolly
President and CEO
Ellis Medicine
518-243-4141
Connollyj@ellismedicine.org

Annette I. Kahler

From: Annette I. Kahler
Sent: Monday, January 30, 2012 6:17 PM
To: Annette I. Kahler
Subject: FW: #Satellite Office Locations

From: **Walt Robb** <waltrobb2@yahoo.com>
Date: Mon, Jan 30, 2012 at 3:15 PM
Subject: Satellite Office Locations
To: satelliteoffices@uspto.gov

Mr. Azam Kahn, Deputy Chief of Staff,
United States Patent and Trademark Office
PO Box 1450, Alexandria, Va. 22313

Dear Mr Kahn,

I am writing about the possible locations of the USPTO Satellite Offices for the Nationwide Workforce Program (Docket No. PTO-C-2011-0066), and am pleased to propose that one location for such an office be in what we call "Tech Valley", an area centered around the tri-cities of Albany, Troy and Schenectady, New York.

Having spent my working life here, getting 12 patents decades ago, eventually being in charge of the GE Research Lab, and more recently being on the board of directors of ten local start-ups, I can attest to the pride that this area has in the people and process of getting patents. A few years ago, I calculated that Tech Valley got more patents per million population than any area of the country, helped largely by GE and IBM. But in addition, the colleges and small business in the area also contribute immensely. And we now have the Nano-Institute of SUNY University becoming a major contributor to our patents and professional man-power. SEMI-TECH has moved its national headquarters here, from Austin, as further evidence of where they thought the most breakthroughs in semiconductors were going to originate. I know no area of the country where the value of patents is better appreciated than right here.

Your consideration of this area will put the Office in the center of a circle including Boston, New York City, and Rochester, making it accessible in a few hours driving to a sizeable fraction of the patents generated each year in the USA. If documentation on these patent density numbers would be helpful, I would be pleased to collect the data to confirm my estimates.

Sincerely yours,

Walter L. Robb

Pres. Vantage Management

518-782-0050

Robert E. Heslin
Jeff Rothenberg
Kevin P. Radigan
Susan E. Farley
Nicholas Mesiti
Philip E. Hansen*
Blanche E. Schiller
Wayne F. Reinke
David P. Miranda
Victor A. Cardona
Brett M. Hutton
John W. Boger

* Patent Agent

† HK and UK Patent Attorney

HESLIN ROTHENBERG FARLEY & MESITI P.C.

INTELLECTUAL PROPERTY LAW
PATENTS · TRADEMARKS · COPYRIGHTS

Attorneys at Law

5 Columbia Circle
Albany, New York 12203
Telephone: (518) 452-5600
Facsimile: (518) 452-5579
www.hrfmlaw.com

Kathy Smith Dias
David A. Pascarella
Alana M. Fuierer
Shanna K. O'Brien
Caroline B. Ahn
Kellie S. Fredericks*
Andrew K. Gonsalves
Erica M. Hines
Shahrokh Falati
Garth H. Mashmann
Matthew M. Hulihan
Melvin Li*†
Dmitry Andreev
Teige P. Sheehan
Rachel Leah Pearlman
Kristian E. Ziegler
Jacquelyn A. Graff

Of Counsel

Jill M. Breedlove
Annette I. Kahler
George S. Blasiak

January 30, 2012

United States Patent and Trademark Office
Attn: Azam Khan, Deputy Chief of Staff
Mail Stop - Office of Undersecretary and Director
P.O. Box 1450
Alexandria, Virginia 22313-1450

Sent via email: satelliteoffices@uspto.gov

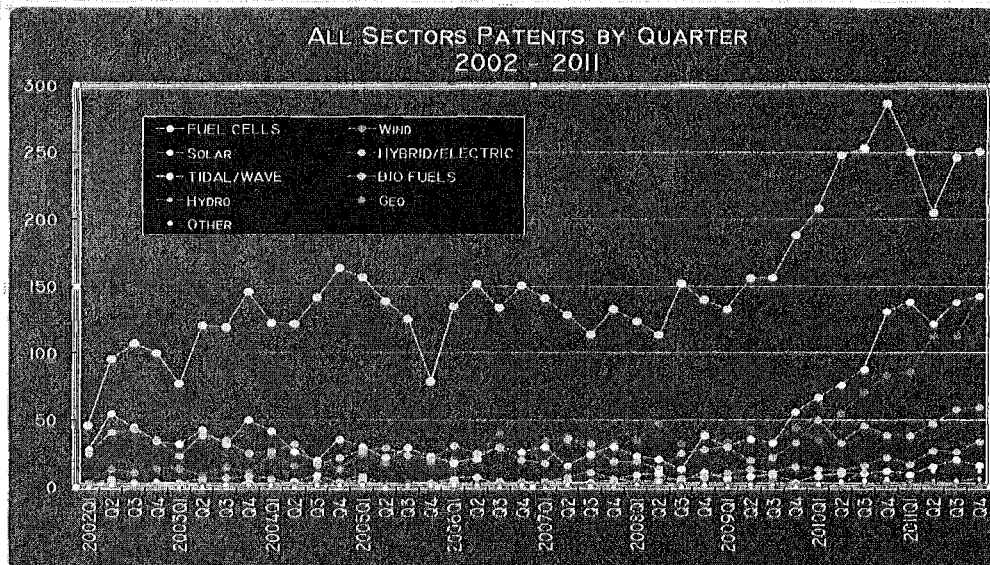
**Re: Comments on Additional USPTO Satellite Offices for the
Nationwide Workforce Program (Docket No. PTO-C-2011-0066)**

Dear Mr. Kahn:

I write to lend support for the establishment of a USPTO satellite office in New York's Capital Region. In particular, a satellite office will have great benefits for the nation's cleantech community and its rapidly expanding patent landscape.

In addition to a large number of local IP professionals, a Cleantech Cluster is present in the Capital/Tech Valley region. Several fuel cell companies, university research in the Cleantech area, a Cleantech incubator, the new Solar Photovoltaic Manufacturing Consortium, and other Cleantech businesses too numerous to mention, are all located nearby. The New York State Energy and Research Development Authority (NYSERDA) is based in Albany. GE's main R&D facility is located in Niskayuna with an emphasis on Wind turbine research, producing the associated patents.

In fact, New York's Cleantech patent numbers have increased dramatically along that with that of GE's Wind business as depicted in the below chart depicting the Clean Energy Patent Growth Index, published by our firm. Wind patents are in blue and the largest growth component has been GE's wind patents, largely driven by its R&D operation in Niskayuna.



The large number of patent generators and IP professionals would find a satellite office in the Capital Region/Tech Valley extremely useful for meetings with examiners and other learning opportunities for IP enrichment that such facility would provide. Further, any examiners working out of such office would find the large number of IP professionals, Cleantech and other technical professionals, not to mention the large number of universities and associated IP, extremely stimulating.

Thank you for your consideration of New York's Capital Region as a future location for a USPTO satellite office. I appreciate the opportunity to submit these comments.

Sincerely,

Victor Cardona

Urban excitement,
suburban ease,
rural escapes...



NEW YORK'S CAPITAL REGION

BE IN THE
MIDDLE
OF EVERYWHERE



Four seasons
for all reasons...



Art, history, sports,
culture, nature,
technology...
it's all here!



NEW YORK'S CAPITAL REGION

NEW YORK'S CAPITAL REGION PUTS YOU RIGHT IN THE MIDDLE OF EVERYWHERE...WITH INSTANT ACCESS TO EVERYTHING

Welcome to New York's Capital Region — and life as it should be! From the bustling energy of downtown Albany, to the pure splendor of the Adirondacks, to the unrivaled corporate opportunities for global success, you'll discover great minds and great finds to help you achieve your greatest moments.

Growth

Enriched by a tradition of innovation and manufacturing dating back more than 150 years with the founding of global powerhouses General Electric and IBM, New York's Capital Region is now witnessing its most exhilarating period of growth in decades with over \$15 billion in investment by business, government, education and the arts over the past 10 years.

Lifestyle

Offering a lifestyle for every personality, and city, suburban or countryside living to meet any need, New York's Capital Region boasts unrivaled quality of life at a low cost of living. School systems, healthcare and recreational activities here are among the best in the country.

Location

New York's Capital Region is the center of the world's richest marketplace — 150 miles north of New York City, 165 miles west of Boston, and 215 miles south of Montréal. The region's central location facilitates easy access to a large, affluent market area, with the largest population concentration in North America within one day's shipping time.

Diversity

The high-tech, global business environment of this region is complemented by its proximity to popular resort destinations, such as the Adirondack Park and Lake George, as well as sports and concert venues, historical sites, and arts and entertainment complexes. Four seasons and a diverse geography mean endless possibilities for recreation and cultural interests.

Discover the wonders of New York's Capital Region

To learn more about our Region or arrange for a custom visit that meets your professional and personal needs, call us directly at (518) 465.8975. We look forward to meeting you!

Best Regards,

F. Michael Tucker
President & CEO
CENTER FOR ECONOMIC GROWTH

Small businesses and global giants.
World-class educational institutions.
All-season resort destinations.
Unparalleled accessibility to New York City, Boston and Montréal.

IT'S ALL RIGHT HERE.



SEMATECH WILL MOVE THE BULK OF ITS REMAINING OPERATIONS

from Austin, Texas to Albany starting in January, bringing at least 100 new jobs to the Upstate New York area.

The move comes after another Sematech subsidiary, International Sematech, relocated its headquarters from Austin to the Albany campus in 2008. That decision was preceeded by a \$300 million incentive package that was approved by the state of New York.

New York State has put tremendous backing behind this initiative," Armbrust said. "I think we've crossed the tipping point where there are enough entities that are investing here that we have to be here too." Sematech is a consortium of computer chip makers, including Intel Corp., HP and Toshiba. Sematech is designed to help the R&D efforts of its member companies.

NEW YORK STATE HAS THE THIRD-LARGEST NUMBER OF FORTUNE 500 COMPANIES IN THE COUNTRY,

according to Fortune Magazine.

PRESIDENT OBAMA ENDORSED THE CAPITAL REGION'S TECHNOLOGY SECTOR IN A SEPTEMBER, 2009 SPEECH AND TOUTED IT AGAIN AS A "MODEL OF WHAT'S POSSIBLE" IN A JANUARY 2011 VISIT TO GE IN SCHENECTADY.

Obama highlighted the technological developments in Saratoga County as something to be duplicated in other parts of the country. The cornerstone is an over \$5 billion computer chip plant being built by GLOBALFOUNDRIES in MALTA, NY.

Forbes

ALBANY IS ONE OF AMERICA'S MOST INNOVATIVE CITIES.

That's according to the latest ranking by Forbes magazine. Forbes said its list is based on trademarks issued per capita, venture capital investments and the types of ratio of high-tech, science and creative jobs the region, based on ZoomProspector.com information.

Forbes.com



NEW YORK IS HOME TO 56 FORTUNE 500 FIRMS.

GE announces plans for \$100M battery manufacturing plant in the Capital Region and hundreds of new "green collar" manufacturing jobs.



SURROUNDED BY

TECHNOLOGY.

The Capital Region's population has been increasing at almost twice the rate of New York State's and most Northeastern states in the past decade. Over \$15 billion invested in the last 10 years by industry, government, education and the arts.

NEW YORK'S CAPITAL REGION

CENTER OF THE WORLD'S RICHEST MARKETPLACE



REPRESENTS

132 million people with a personal income of over \$1.7 trillion

OVER 50% of all retail sales and wholesale receipts
54% of all manufacturing facilities
56% of all skilled workers



M+W Group

M+W Group is a recognized global project partner for technology-based clients in the electronics, photovoltaics, life sciences, chemicals, science and research, energy, automotive, IT and telecoms, aerospace and defense segments.



Albany International Airport

The major air center for the Capital Region, Northeastern New York and Western New England, recently invested \$510 million in capital redevelopments.



GLOBALFOUNDRIES

At over \$5 billion, the location of Fab 8 in Malta, NY is one of the largest public-private sector investments in New York's history.



ANGIODYNAMICS

A leading provider of innovative medical devices used by interventional radiologists, nephrologists and surgeons for the minimally invasive treatment of cancer and peripheral vascular disease.



RPI

Rensselaer Polytechnic Institute is the nation's oldest technological university and home to the world's most powerful University-based supercomputer.



Rensselaer Train Station

Opened in 2002 after \$53 million in renovations, it is the 10th busiest station in the country, serving more than 750,000 people per year.

GENERAL ELECTRIC

Hub of rapidly expanding operations-including multimillion dollar capital investments in R&D, wind, battery and imaging/bio-life sciences.



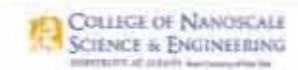
GE Energy announced \$100 million state-of-the-art advanced Battery Manufacturing Center to expand clean energy initiatives in August, 2009, scheduled to open 2011.

GE Healthcare opens \$165 million World-Class Digital Mammography Production Facility/Imaging Center in June 2009.

GE R&D Headquarters Since 2001, GE has made capital investments of \$330 million to expand its Global Research facilities, including large investments in its upstate NY headquarters.

GE Renewable Energy Global Headquarters Dedicated in February, 2010 - \$45 million investment in Schenectady, with 650 new jobs created.

CNSE



The College of Nanoscale Science and Engineering (CNSE)/Albany NanoTech is ranked #1 in the world for micro and nanotechnology.

RESIDENT COMPANIES INCLUDE:



CAPITAL REGION

One day's drive to over half the purchasing power of North America

150 miles north of New York City

215 miles south of Montréal

165 miles west of Boston

290 miles east of Buffalo

BE IN GOOD COMPANY



WARREN COUNTY

NEW YORK'S CAPITAL REGION

CENTER OF VIBRANT COMMUNITIES, CULTURES, ACTIVITIES & LIFESTYLES

» HOME TO FIRST-RATE EDUCATION

- 18 colleges and universities with a total enrollment of almost 105,000 students
- Over 750 degree options
- Award-winning K-12 school systems

** The balloon festival is just spectacular. We never see anything like it!*

» HOME TO A COMPETITIVE HOUSING MARKET

- Abundant housing options to fit your preference
- Reasonable, easy commutes

» HOME TO GLOBAL CULTURE AND DINING

- Active ethnic communities
- Numerous restaurants with variety of global cuisines

» HOME TO THRIVING ARTS SCENE

- RPI's Experimental Media & Performing Arts Center (EMPAC)
- Museums & rich history
- Multitude of summer music festivals

» HOME TO PROFESSIONAL AND COLLEGIATE SPORTS

- Division I College Basketball at Siena College & University at Albany; Division I College Hockey at Union College & RPI
- Access to Major League Sports in NYC, Buffalo, Boston and beyond

» HOME TO ALL-SEASON OUTDOOR PURSUITS

- Year-round recreation includes boating, fishing, hiking, swimming, apple picking, camping & skiing

» HOME TO WORLD-CLASS PERFORMANCE VENUES

- Capital Region welcomes the biggest names in rock, pop, country and classical
- Saratoga Performing Arts Center (SPAC)
- Times Union Center
- Wealth of theater options including Proctors, The Palace, The Egg & Troy Music Hall

ACCESS TO NATURAL FOOD CO-OPS, LOCAL FARMER'S MARKETS AND LOCALLY GROWN PRODUCE

CHOOSE YOUR LIFESTYLE:
URBAN, SUBURBAN OR RURAL

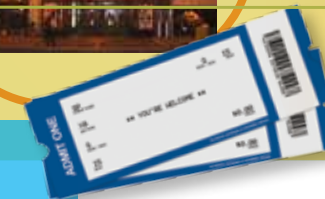
SCHENECTADY COUNTY

AFFORDABLE AND ABUNDANT URBAN, SUBURBAN AND RURAL RESIDENTIAL SETTINGS

** This theatre presents some of the Nation's top touring productions: Phantom of the Opera, Spamalot, Wicked, The Producers...*



FOUR SEASONS OF OUTDOOR PURSUITS



Adirondack Park

ADIRONDACK PARK: AT 6 MILLION ACRES, IT IS THE LARGEST PROTECTED AREA IN THE CONTINENTAL U.S.; LARGER THAN YOSEMITE, EVERGLADES, GRAND CANYON AND YELLOWSTONE NATIONAL PARKS COMBINED

LAKE PLACID: 2 TIME HOST TO THE WINTER OLYMPIC GAMES (1932, 1980)

Gore Mtn.

AN EASY TRIP BY TRAIN TO NYC, BOSTON OR MONTREAL

Killington Mtn.

WARREN COUNTY

WASHINGTON COUNTY

FULTON COUNTY

SARATOGA COUNTY

MONTGOMERY COUNTY

SCHENECTADY COUNTY

1 CAPITAL CITY, 365 DAYS OF FUN

Albany

ALBANY COUNTY

RENSSELAER COUNTY

Jiminy Peak

SCHOHARIE COUNTY

GREENE COUNTY

COLUMBIA COUNTY

Hunter Mtn.

SARATOGA COUNTY



THE SARATOGA RACE COURSE IS THE OLDEST AND MOST PRESTIGIOUS HORSE TRACK IN AMERICA



** The arts abound in this region in all forms... from ballet and opera to contemporary live music and galleries.*



I thought of you when I saw this house!



THE CATSKILL MOUNTAINS INCLUDE ONE OF THE LARGEST AND MOST COMPLEX NATURAL AREAS IN THE EAST — ON PAR WITH THE WEST'S YELLOWSTONE NATIONAL PARK. ROUND, FORESTED MOUNTAINS; NARROW, WINDING VALLEYS; RUSHING STREAMS AND RIVERS ARE FEATURES THAT ATTRACT MANY TO THE 600,000 ACRES OF THE CATSKILL PARK.

** I took a boat up the Hudson River, and learned a lot about the area's rich history from our tour guide.*



RATED AMONG THE BEST GREEN METRO AREAS AND LEAST STRESSFUL METRO AREA IN U.S.

{ Sperling's Best Places }

RENSSELAER COUNTY



5 PUBLIC HIGH SCHOOLS IN NEW YORK'S CAPITAL REGION PLACED AMONG THE TOP 5% IN THE COUNTRY

{ Newsweek Magazine }

ALBANY COUNTY

RANKED #7 AMONG FAST-GROWING CITIES THAT ARE STILL AFFORDABLE

{ MSN Money }

HOME TO A TOP 15 ACADEMIC MEDICAL CENTER



INSIDER INSIGHT

BE WHERE YOUR OPINION REALLY MATTERS

We asked professionals from New York's Capital Region to share their thoughts about the area. From corporate opportunity and global access, to quality of life and all-season activities, these comments share a common theme: ACCOMPLISHMENT.

» **DAVID BUICKO**

Chief Operating Officer, The Galesi Group

New York's Capital Region has it all: award-winning colleges and universities, affordable housing, tremendous health care facilities, and recreational opportunities for each season.

As a graduate of Siena College and a resident of the Albany area for over 35 years, the Capital Region is a place I proudly call home. The Galesi Group's local and national success is due in part to the Capital Region's talented, driven work force and its award-winning schools and universities. Most recently, the Capital Region has become the beneficiary of some of the largest economic development projects in the world: the \$5 billion GLOBALFOUNDRIES Chip Fab Project in Malta, the Nanotechnology and Sematech Projects in Albany, the GE Healthcare Project in Rensselaer and the GE Battery and GE Renewable Headquarters Projects in Schenectady.

» **KEN DALY**

President, National Grid New York

As the local electricity and gas company, National Grid will continue to be a partner every step of the way, providing both the reliable energy solutions the 21st century demands, and the strategic economic development programs that help our customers grow. The Capital Region's economic vitality is based on a history of innovation, investment and hard work. Setting the Capital Region apart is a collaborative spirit as demonstrated in the area's leadership in nanotechnology.

» **NORM ARMOUR**

VP and General Manager, FAB 8, GLOBALFOUNDRIES

New York's Capital Region is a special community filled with talented people, entrepreneurial small businesses, leading global corporations and world-class learning institutions. Historically, upstate New York has long been a home for innovation and cutting-edge technology. That spirit of innovation and leadership is once again coming home to New York. We're building Fab 8 to be the world's most advanced semiconductor manufacturing facility in the world and we believe this region has the right ingredients for phenomenal growth and success in the global 21st century economy.

» **DAN PICKETT**

Chairman & CEO, Infrastructure technologies

The quality of life resources within our region are world-class and diverse, from the concert venues at SPAC to the Saratoga Race Course to Lake George. The resources within a half day's drive are tremendous, from New York City to Boston to Philadelphia to Cape Cod. Our institutions of higher education produce a diverse world-class entry and executive level workforce of both technical and non-technical talent. Our location gives businesses a massive addressable market and tremendous operational leverage, being able to serve all of the markets face-to-face while having some cost benefits of being upstate versus downstate.

» **JAN KELTJENS**

President & CEO, AngioDynamics

The Capital Region has abundant resources available to our business, including advanced centers of education, like RPI and the University at Albany's NanoCollege, and leading medical institutions, such as Albany Med and Ellis Medicine. The nearby Albany International Airport gives us the travel options our new global strategy demands, allowing us to build deeper connections with our customers around the world.

» **JENNIFER MACPHEE**

Market President, Bank of America

We moved to the Capital Region when I was six years old, so to me it has always been home. There are so many reasons why I have stayed here and why my husband and I have chosen to raise our family here. I love the Saratoga Race Course, Lake George and the proximity of being only two and a half hours to New York City or Boston. To be able to live in a beautiful suburb and only be 6 miles from downtown Albany makes the work/life balance so much easier than many other cities. To be able to have the quality of life that the Capital District offers and work for one of the largest companies in the world allows me to not have to choose between career and family — I can have both. The business environment here is strong and the continued growth of New York's Capital Region is bringing more and more talent to our area.

» **RICK WHITNEY**

President, M+W U.S., Inc.

The upstate environment has the best of both worlds — big city amenities combined with a warmth and friendliness more often associated with smaller cities. In the 5 years I have been working here, I have discovered a great entrepreneurial spirit and proactive climate within the business community. That 'get it done' attitude also feeds a deep involvement by businesses and business-sponsored groups within the community and with maintaining a very high quality of life for the workforce. Employees moving to the area are continually commenting on the affordability of housing, the wide variety of recreational activities, access to great cultural venues and the quality of the local schools for their children. These testimonials have helped educate the 2nd and 3rd wave of employees that we are recruiting to the area.

» **DR. SHIRLEY JACKSON**

President, Rensselaer Polytechnic Institute

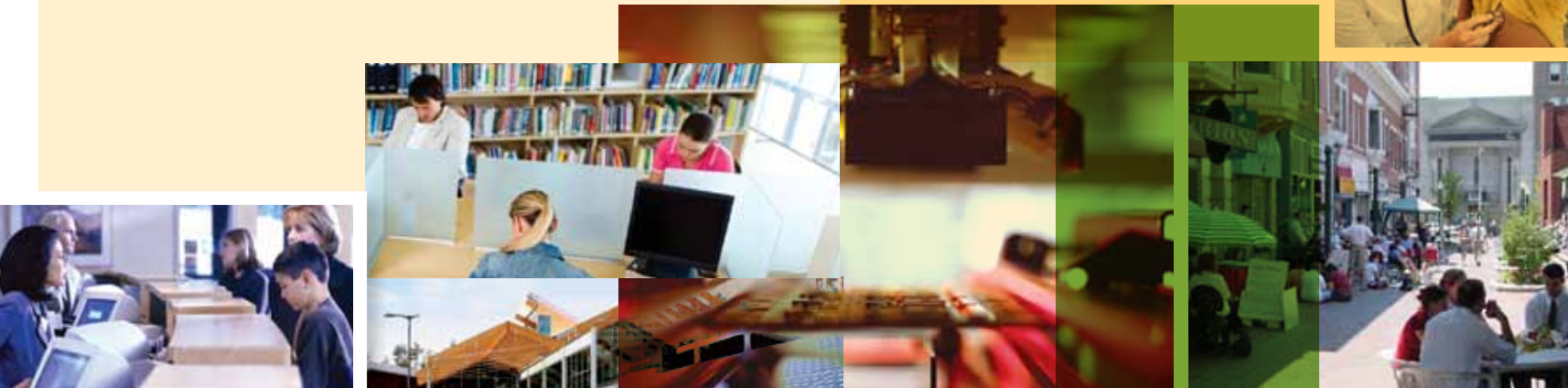
New York's Capital Region has great potential as a national model for innovation and growth. It is a vibrant, collaborative community, an innovation powerhouse surrounded by natural beauty, rich in cultural activities, and blessed with extraordinary educational resources — all leading to an exceptionally high quality of life. Rensselaer is proud to partner with CEG and the entire region in continuing to build success in New York's Capital Region.

» **DR. ANDREW J. MATONAK**

President, Hudson Valley Community College

In New York State's Capital Region, higher education and industry work hand-in-hand to foster economic growth. These partnerships fit hand and glove with Hudson Valley Community College's commitment to preparing students for a 21st-century workforce and economy. The sum of our efforts has created a state with one of the most vital, resilient and inclusive economies here in the U.S. and around the world.

So, what will New York's Capital Region mean to you?



LIVE, WORK AND PLAY AT THE HEART OF IT ALL.

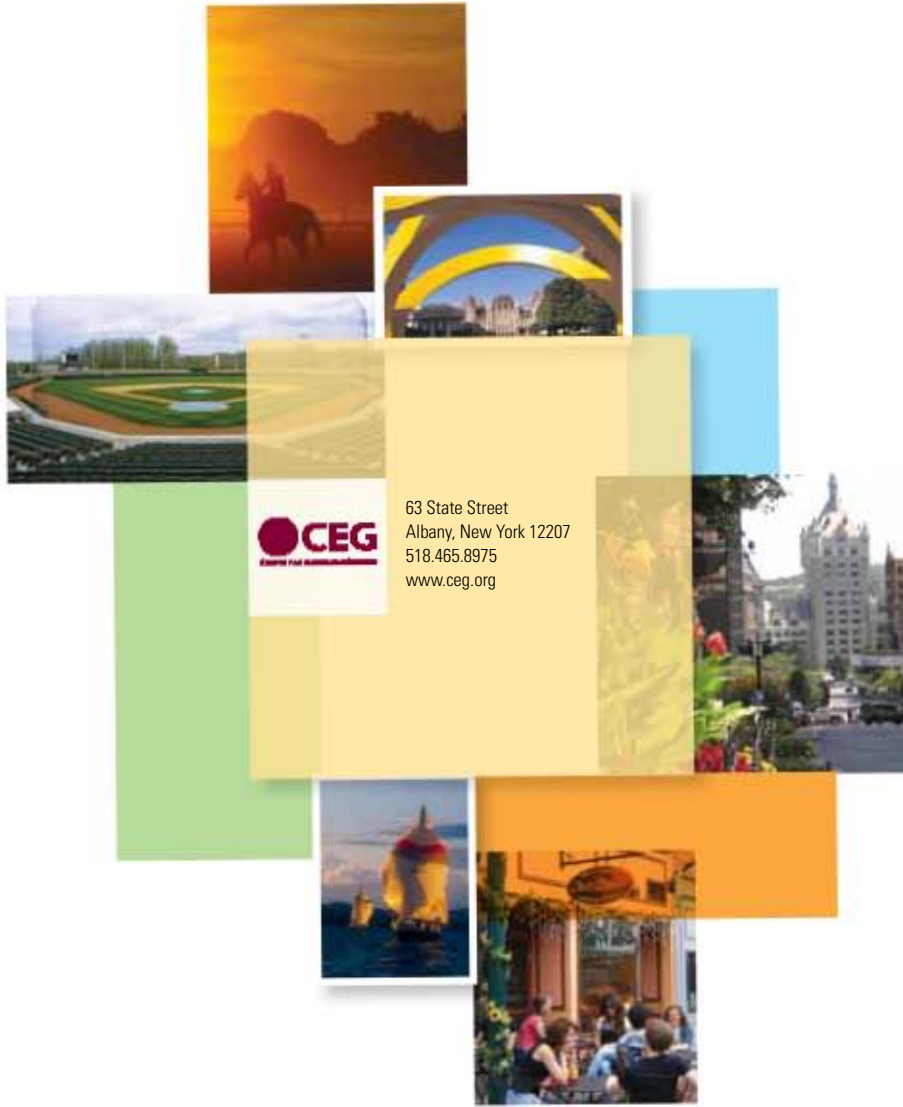
HERE.

NEW YORK'S CAPITAL REGION

GREAT MIND . EAT FIND . EAT FUTURE.

Questions? Comments? Ideas?
CALL US!





63 State Street
Albany, New York 12207
518.465.8975
www.ceb.org

Images courtesy of Albany
County Convention & Visitors
Bureau, EDC Warren County,
Rensselaer County Regional
Chamber of Commerce, Saratoga
County Chamber of Commerce
The Chamber of Schenectady
County, Adam Coglianese,
Randall Perry Photography and
Mainframe Photography.