

**UNITED STATES
PATENT AND TRADEMARK OFFICE**



Quality of design patent drawings

Karen M. Young

Director Technology Center 2900

August 5, 2021

Patent Public Advisory Committee quarterly meeting

UNITED STATES
PATENT AND TRADEMARK OFFICE



Quality of design patent drawings

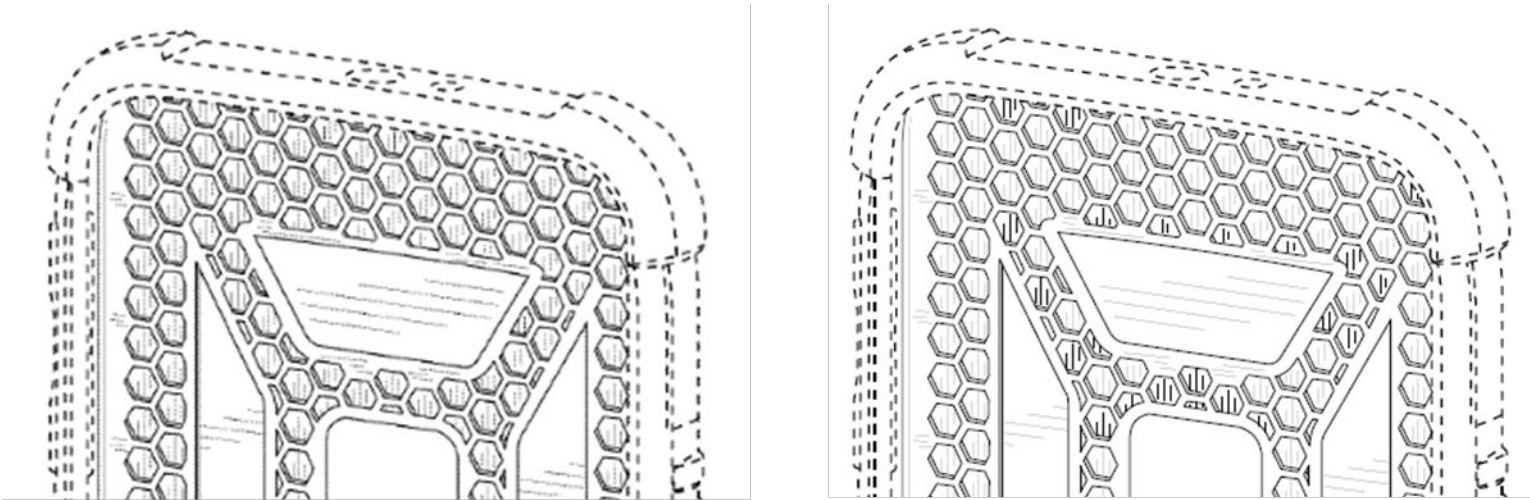
- Improvements implemented in 2016
 - The USPTO received feedback that the images published as part of design patent grants were degraded compared to the images that applicants provided to the USPTO with initial filings.
 - After investigating this issue, the USPTO identified a specific conversion process that was mainly responsible for the degraded quality of the images.

Quality of design patent drawings cont.

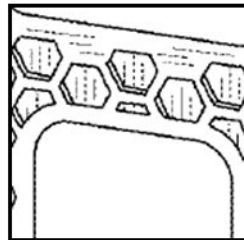
- Improvements implemented in 2016 continued
 - USPTO moved to preserving vector based drawings submitted by applicants in .pdf.
 - These .pdf drawings are stored and displayed in the Supplemental Complex Repository for Examiners (SCORE).
 - SCORE drawings are used in
 - the printed design patent and
 - loaded into the supplemental content of the electronic files of our patent application files to allow external stakeholders to download an exact, clear copy of the patent grant images.

Quality of design patent drawings cont.

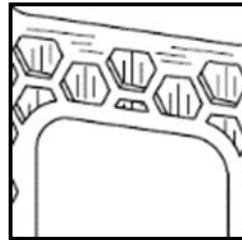
- Improvements implemented in 2016 continued



Before



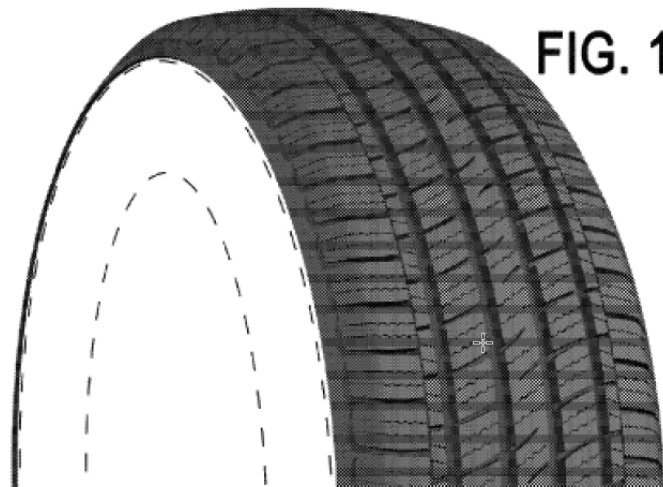
After



uspto

Quality of design patent drawings cont.

- Improvements implemented in 2016 continued



Before



After



Quality of design patent drawings cont.

- The USPTO has an ongoing effort to continue to improve the quality of published drawings.
- Noted issues include the presence of “invisible” boxes:



As filed



As published

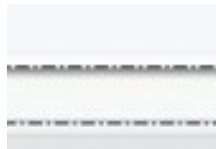


Data capture process
reveals “invisible” box



Quality of design patent drawings cont.

- Noted issues include the presence of layers:



As filed



As published



Data capture process
reveals translucent layer

Quality of design patent drawings cont.

- Noted issues include pixelation



As filed



As published

Quality of design patent drawings cont.

- Noted issues include gaps in lines:



As filed



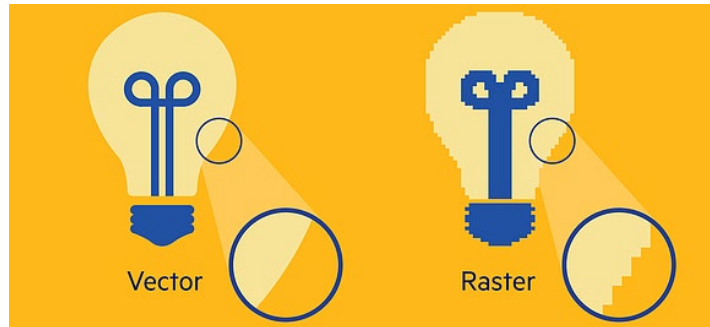
As published

Quality of design patent drawings cont.

- The USPTO is committed to continuing to improve the quality of published drawings.
- Items to note:
 - When drawings are submitted as vector based drawings they are treated as vector based throughout the process.

Quality of design patent drawings cont.

- Items to note continued:
 - However, sometimes the vector drawings have embedded elements that are raster based.
 - When this occurs, the entire drawing has to be processed as a raster image.



[Image from Holland Print House](#)

Quality of design patent drawings cont.

- Items to note continued:
 - If there are any 'hidden' objects in the figures, they can be revealed during processing with unexpected outcomes for the final patent drawings.
 - The drawings should not contain any layering or hidden objects.
 - All drawings should be flattened before submission.

Quality of design patent drawings cont.

- USPTO staff has been trained to better detect unexpected outcomes in the final drawings.
- Where possible, several IT and software improvements have been implemented to correct some of the types of output errors that have been noted.
- An update was made mid-March.
- Further solutions are currently being explored and will be implemented as soon feasible.



Thank you!

Karen M. Young

Director, Technology Center
2900

karen.young@uspto.gov

571-272-7900

www.uspto.gov