

## A24D

### CIGARS; CIGARETTES; TOBACCO SMOKE FILTERS; MOUTHPIECES FOR CIGARS OR CIGARETTES; MANUFACTURE OF TOBACCO SMOKE FILTERS OR MOUTHPIECES

#### Definition statement

*This place covers:*

Cigars, Cigarettes

Tobacco smoke filters

Manufacture of tobacco smoke filters or mouthpieces

#### Glossary of terms

*In this place, the following terms or expressions are used with the meaning indicated:*

Cigarette	"cigarette" means: (1) a small tube of wrapper containing tobacco or tobacco substitutes which people smoke by igniting it directly and where the tobacco (or the tobacco substitute) is burned; (2) in a broader sense it also means a small tube of wrapper containing tobacco or tobacco substitutes which is associated with a heat source at manufacturing or inserted by the user in a device containing a heat source, and where the tobacco (or the tobacco substitute) is heated without being burned. In this broader sense, the word "rod" is also often used in place of cigarette.
Simulated smoking device	"simulated smoking devices" means devices simulating the act of smoking without burning tobacco, e.g. so called electronic cigarettes

## A24D 1/00

### Cigars; Cigarettes

#### Definition statement

*This place covers:*

Cigars, Cigarettes as products per se

#### References

##### Informative references

*Attention is drawn to the following places, which may be of interest for search:*

Filters	<a href="#">A24D 3/00</a>
Manufacture of cigars or cigarettes	<a href="#">A24C</a>
Pipes	<a href="#">A24F 1/00</a>
Simulated smoking devices	<a href="#">A24F 40/00</a> , <a href="#">A24F 42/00</a>

**A24D 1/02****with special covers****Definition statement**

*This place covers:*

Cigars, Cigarettes in which the wrapper has a particular structure or composition.

**References****Limiting references**

*This place does not cover:*

Tobacco smoke filters with ventilation means	<a href="#">A24D 3/043</a>
--	----------------------------

**Informative references**

*Attention is drawn to the following places, which may be of interest for search:*

Treatment of cigarette papers	<a href="#">A24C 5/005</a>
-------------------------------	----------------------------

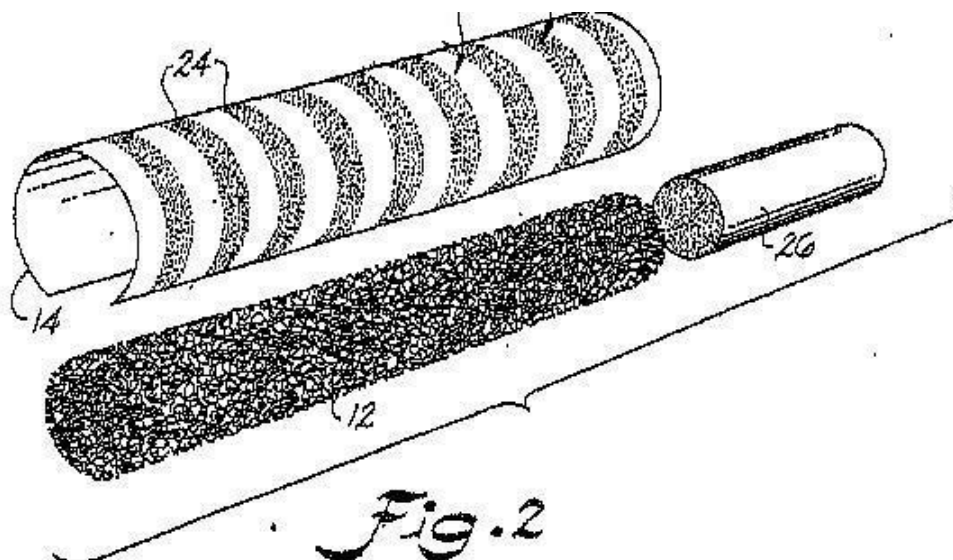
**A24D 1/025**

{the covers having material applied to defined areas, e.g. bands for reducing the ignition propensity}

**Definition statement**

*This place covers:*

US20030136420 A1

**Glossary of terms**

*In this place, the following terms or expressions are used with the meaning indicated:*

Ignition propensity	the capacity of a cigarette of burning through when left resting on a substrate without puffing
---------------------	---

## Synonyms and Keywords

In patent documents, the following abbreviations are often used:

LIP	Low ignition propensity, Low ignition proclivity
-----	--

## A24D 1/042

{with mouthpieces ([A24D 1/047](#) takes precedence; mouthpieces per se [A24D 3/18](#))}

## References

### Limiting references

This place does not cover:

With extensible mouthpieces	<a href="#">A24D 1/047</a>
-----------------------------	----------------------------

### Informative references

Attention is drawn to the following places, which may be of interest for search:

Mouthpieces per se	<a href="#">A24D 3/18</a>
--------------------	---------------------------

## A24D 1/08

with lighting means (pyrophoric compositions [C06C 15/00](#); lighters per se [F23Q](#))

## Definition statement

This place covers:

Smoking products combined with pyrophoric or easily ignitable material and products combined with match scratchers or analogous means

## References

### Informative references

Attention is drawn to the following places, which may be of interest for search:

Pyrophoric compositions	<a href="#">C06C 15/00</a>
Lighters per se	<a href="#">F23Q</a>

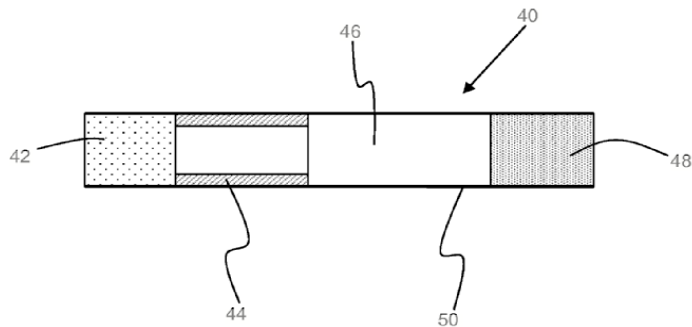
## A24D 1/20

### Cigarettes specially adapted for simulated smoking devices

#### Definition statement

*This place covers:*

Cigarettes to be inserted into simulated smoking devices where the cigarettes are heated by a heat source of the device.



Legend:

40: cigarette

42: tobacco or tobacco substitute segment

44: hollow tube

46: filter

48: mouthpiece

50: wrapper

#### References

##### Informative references

Attention is drawn to the following places, which may be of interest for search:

Making cigarettes for simulated smoking devices	<a href="#">A24C 5/01</a>
Simulated smoking devices	<a href="#">A24F 40/00</a> , <a href="#">A24F 42/00</a>

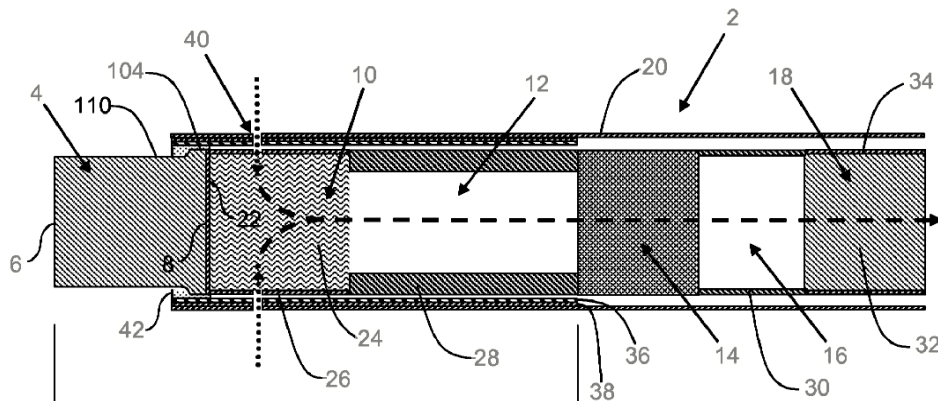
## A24D 1/22

### Cigarettes with integrated combustible heat sources, e.g. with carbonaceous heat sources

#### Definition statement

*This place covers:*

Cigarettes with an integrated combustible heat source which heats the tobacco (substitute) without burning it (to produce an aerosol) in the act of simulated smoking



Legend:

2: cigarette

4: heat source

10: tobacco or tobacco substitute segment

12: hollow tube

14: aerosol cooling element

16: spacer

18: mouthpiece, filter

20: wrapper

## A24D 3/00

### Tobacco smoke filters, e.g. filter-tips, filtering inserts; Filters specially adapted for simulated smoking devices; Mouthpieces for cigars or cigarettes (for pipes, for cigar or cigarette holders [A24F 7/00](#))

#### Definition statement

*This place covers:*

Filters for tobacco smoke, products per se and their manufacture

Mouthpieces for cigars or cigarettes

## References

### Limiting references

*This place does not cover:*

Mouthpieces for pipes, for cigar or cigarette holders	<a href="#">A24F 7/00</a>
---	---------------------------

### Informative references

*Attention is drawn to the following places, which may be of interest for search:*

Special covers for cigarettes, cigars	<a href="#">A24D 1/02</a>
Pneumatic transport of filters from the filter maker to the filter attaching machines	<a href="#">A24C 5/323</a>
Filters in general	<a href="#">B01D</a>

## A24D 3/02

**Manufacture of tobacco smoke filters (manufacture of paper or cellulosic materials for filters [D21](#))**

### Definition statement

*This place covers:*

The production of tobacco smoke filters, e.g. from the filter tow bale to the final product

## References

### Limiting references

*This place does not cover:*

Attaching filters to the cigarette rod	<a href="#">A24C 5/47</a>
Manufacture of paper or cellulosic material	<a href="#">D21</a>

### Special rules of classification

When the process of manufacture confers to the final product a particular structure, then a class of [A24D 3/04](#) should be given.

## A24D 3/0287

**{for composite filters}**

## References

### Informative references

*Attention is drawn to the following places, which may be of interest for search:*

Transporting cigarettes during manufacture with lateral transferring means	<a href="#">A24C 5/326</a>
--	----------------------------

**A24D 3/0295****{Process control means}****Definition statement***This place covers:*

Control means for the filter manufacturing process.

**References****Informative references***Attention is drawn to the following places, which may be of interest for search:*

Examining cigarettes or the rod	<a href="#">A24C 5/34</a>
---------------------------------	---------------------------

**A24D 3/04****Tobacco smoke filters characterised by their shape or structure****Definition statement***This place covers:*

The tobacco smoke filter as a product, eventually incorporated in a smoking article

Mechanical or structural aspects of the finished filter product

**References****Informative references***Attention is drawn to the following places, which may be of interest for search:*

Structural features of the filter material itself or of a filter additive	<a href="#">A24D 3/062</a>
---	----------------------------

**Special rules of classification**Manufacture of tobacco smoke filters is classified in [A24D 3/02](#).Chemical aspects of filter materials are classified in [A24D 3/06](#).**A24D 3/043****{with ventilation means, e.g. air dilution ([A24D 3/041](#) takes precedence)}****References****Limiting references***This place does not cover:*

Adjustable means for modifying the degree of filtration of the filter	<a href="#">A24D 3/041</a>
---	----------------------------

## A24D 3/048

{containing additives}

### Definition statement

*This place covers:*

Filters characterized by the presence of an additive in its constructional features.

### References

#### Informative references

*Attention is drawn to the following places, which may be of interest for search:*

Additive composition	<a href="#">A24D 3/061</a>
----------------------	----------------------------

### Special rules of classification

When the additive to the filter is incorporated in the tipping paper, the document should be classified also in [A24D 1/02](#) (special covers for cigarettes)

This class takes precedence over [A24B 15/282](#) (treatment of tobacco products by chemical substances, the action of which being delayed by indirect addition of the chemical substances)

## A24D 3/06

**Use of materials for tobacco smoke filters**

### Definition statement

*This place covers:*

Material used in the tobacco smoke filter.

Chemical, structural or functional aspects of the material or additive.

### References

#### Limiting references

*This place does not cover:*

Manufacture of tobacco smoke filters	<a href="#">A24D 3/02</a>
Shape or structure of tobacco smoke filter itself	<a href="#">A24D 3/04</a>

### Special rules of classification

This group comprises materials including natural organic or inorganic compounds of undefined constitution e.g. tobacco, sand, pine needles, cork and other materials of undefined constitution obtained from animal or plants



## A24D 3/061

{containing additives entrapped within capsules, sponge-like material or the like, for further release upon smoking (constructional aspects of the filter [A24D 3/048](#))}

### References

#### *Informative references*

*Attention is drawn to the following places, which may be of interest for search:*

Constructional aspects of the filter itself	<a href="#">A24D 3/048</a>
---	----------------------------

### Special rules of classification

capsules, sponge like material, (foam or cellular structure are also classified in [A24D 3/066](#))

## A24D 3/062

{characterised by structural features}

### Definition statement

*This place covers:*

Structural features of the material itself or the additive (other than fibers), e.g. foam like material, particle size or shape of granular additives.

### References

#### *Informative references*

*Attention is drawn to the following places, which may be of interest for search:*

Shape or structure of the filter itself	<a href="#">A24D 3/04</a>
---	---------------------------

### Special rules of classification

Documents in these subgroups are also classified in subgroups [A24D 3/06](#) and [A24D 3/08-A24D 3/163](#), according to the chemical nature of the material or additive. Double classification is therefore necessary.

## A24D 3/064

{having non-circular cross-section}

### Definition statement

*This place covers:*

e.g. Y or C cross-section

### A24D 3/065

{with sheath/core of bi-component type structure}

#### Definition statement

*This place covers:*

Fibers with any composite structure, i.e. at least two distinctive regions e.g. sheath/core

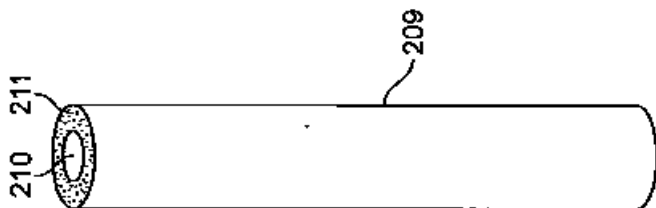
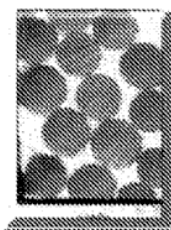


Figure taken from patent application US2008149119 from PHILIP MORRIS USA INC

Sheath/core type or hollow fibers.

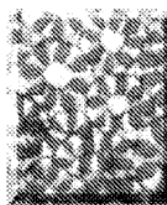
Bi-component type fibers:



**FIG. 2A**



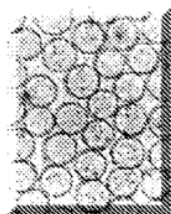
**FIG. 2B**



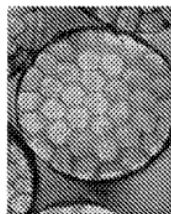
**FIG. 2C**



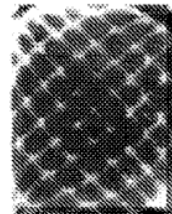
**FIG. 2D**



**FIG. 2E**



**FIG. 2F**



**FIG. 2G**

Figure taken from patent application WO2013019413 from R.J. REYNOLDS TOBACCO COMPANY

**A24D 3/066****{in the form of foam or having cellular structure}****Definition statement***This place covers:*

foam-like, cellular or porous material

**A24D 3/067****{characterised by functional properties}****Definition statement***This place covers:*

Functional properties of the material, additive or the filter itself, e.g. biodegradable filter, disintegrative paper or disintegration enhancers.

**Special rules of classification**Documents in these subgroups are also classified in subgroups [A24D 3/06](#) and [A24D 3/08-A24D 3/163](#), according to the chemical nature of the material or additive. Double classification is therefore necessary.**A24D 3/068****{Biodegradable or disintegrable}****Definition statement***This place covers:*

Biodegradability or ease of disintegration in the environment is an important feature of the material or filter itself.

**A24D 3/08****of organic materials as carrier or major constituent (of ion exchange materials [A24D 3/12](#))****References****Limiting references***This place does not cover:*

Organic compounds of undefined constitution e.g. pine needle, cork, tobacco, and other organic materials of undefined constitution obtained from animal or plants	<a href="#">A24D 3/06</a>
Of ion exchange materials	<a href="#">A24D 3/12</a>

**Special rules of classification**

Synthetic products, generally polymeric. The material constitute the carrier or main component of the filter.

**A24D 3/10****of cellulose or cellulose derivatives****Definition statement***This place covers:*

Cellulose, e.g. paper or derivative e.g. cellulose acetate

**A24D 3/14****of organic materials as additive (of ion exchange materials [A24D 3/12](#))****Definition statement***This place covers:*

Organic additive, e.g. flavouring agent,

**References****Limiting references***This place does not cover:*

Of ion exchange materials	<a href="#">A24D 3/12</a>
---------------------------	---------------------------

**A24D 3/145****{Microbial metabolite, e.g. enzyme}****Definition statement***This place covers:*

Enzymes or other microbial metabolite or extract thereof, e.g. bacterial extract.

**A24D 3/16****of inorganic materials****Definition statement***This place covers:*

Comprising inorganic material as main constituent or as additive

**References****Limiting references***This place does not cover:*

Inorganic compounds of undefined constitution e.g. sand, and other inorganic materials of undefined constitution obtained from animal or plants	<a href="#">A24D 3/06</a>
---	---------------------------

**A24D 3/163****{Carbon}****Definition statement***This place covers:*

Carbon, generally active carbon.

**A24D 3/166****{Silicic acid or silicates}****Definition statement***This place covers:*

includes also silica, zeolites, aluminosilicates

**A24D 3/18**

**Mouthpieces for cigars or cigarettes; Manufacture thereof ([A24D 3/02](#) takes precedence; making tipping materials for, or attaching them to mouthpieces of, cigars or cigarettes [A24C 5/56](#); producing cigar or cigarette holders from plastics or from substances in a plastic state [B29D 23/14](#); manufacture from metal, see the relevant subclasses of Section B)**

**Definition statement***This place covers:*

elements adapted to be inserted at the mouth end of cigar or cigarettes, usually but not necessarily having filtering action, e.g. elements for smoking Russian cigarettes.

**References****Limiting references***This place does not cover:*

Manufacture of tobacco smoke filters	<a href="#">A24D 3/02</a>
--------------------------------------	---------------------------

**Informative references***Attention is drawn to the following places, which may be of interest for search:*

Making tipping materials for, or attaching them to mouthpieces of, cigars or cigarettes	<a href="#">A24C 5/56</a>
Producing cigar or cigarette holders from plastics or substances in a plastic state	<a href="#">B29D 23/14</a>