

EUROPEAN PATENT OFFICE
U.S. PATENT AND TRADEMARK OFFICE

CPC NOTICE OF CHANGES 958

DATE: JANUARY 1, 2021

PROJECT RP0711

The following classification changes will be effected by this Notice of Changes :

<u>Action</u>	<u>Subclass</u>	<u>Group(s)</u>
SCHEME:		
Titles Changed:	F02B	SUBCLASS
	F02B	1/00
	F02B	3/00, 3/06
	F02B	5/00
	F02B	7/00
	F02B	9/00, 9/02
	F02B	11/00
	F02B	19/00, 19/10, 19/12, 19/14
	F02B	25/00, 25/26
	F02B	27/00
	F02B	29/02, 29/08
	F02B	31/00
	F02B	33/00, 33/30, 33/42, 33/44
	F02B	37/00, 37/22
	F02B	39/02
	F02B	41/10
	F02B	53/14
	F02B	61/00
	F02B	71/04
	F02B	75/06, 75/10
	F02B	77/02
	F02B	79/00
Warnings Modified:	F02B	SUBCLASS
Notes Modified:	F02B	SUBCLASS
Guidance Headings Modified:	F02B	1/00
	F02B	13/00
	F02B	19/00
	F02B	25/00
	F02B	33/00
	F02B	43/00
	F02B	47/00
	F02B	61/00
DEFINITIONS:		
Definitions Deleted: (no frozen (F) symbol definitions should be deleted)		
Definitions New:	F02B	29/02, 29/04, 29/08

CPC NOTICE OF CHANGES 958

DATE: JANUARY 1, 2021

PROJECT RP0711

<u>Action</u>	<u>Subclass</u>	<u>Group(s)</u>
Definitions Modified:	F02B	Subclass
	F02B	1/00
	F02B	3/00, 3/06
	F02B	5/00
	F02B	7/00
	F02B	9/00
	F02B	11/00
	F02B	19/00
	F02B	25/00
	F02B	27/00
	F02B	31/00
	F02B	33/00, 33/30
	F02B	35/00
	F02B	37/00, 37/12, 37/22
	F02B	39/00, 39/02
	F02B	41/10
	F02B	61/00
	F02B	75/10
	F02B	77/02
	F02B	79/00

No other subclasses/groups are impacted by this Notice of Changes.

This Notice of Changes includes the following [Check the ones included]:

1. CLASSIFICATION SCHEME CHANGES

- A. New, Modified or Deleted Group(s)
- B. New, Modified or Deleted Warning(s)
- C. New, Modified or Deleted Note(s)
- D. New, Modified or Deleted Guidance Heading(s)

2. DEFINITIONS

- A. New or Modified Definitions (Full definition template)
- B. Modified or Deleted Definitions (Definitions Quick Fix)

3. REVISION CONCORDANCE LIST (RCL)

4. CHANGES TO THE CPC-TO-IPC CONCORDANCE LIST (CICL)

5. CHANGES TO THE CROSS-REFERENCE LIST (CRL)

CPC NOTICE OF CHANGES 958

DATE: JANUARY 1, 2021

PROJECT RP0711

1. CLASSIFICATION SCHEME CHANGES

A. New, Modified or Deleted Group(s)

SUBCLASS F02B - INTERNAL-COMBUSTION PISTON ENGINES; COMBUSTION ENGINES IN GENERAL (...)

<u>Type*</u>	<u>Symbol</u>	<u>Indent Level Number of dots (e.g. 0, 1, 2)</u>	<u>Title</u> “CPC only” text should normally be enclosed in {curly brackets}**	<u>Transferred to#</u>
M	F02B	Subclass	INTERNAL-COMBUSTION PISTON ENGINES; COMBUSTION ENGINES IN GENERAL (gas-turbine plants F02C; hot-gas or combustion-product positive-displacement engine plants F02G)	
M	F02B 1/00	0	Engines characterised by fuel-air mixture compression (characterised by both fuel-air mixture compression and air compression, or characterised by both positive ignition and compression ignition F02B 11/00)	
M	F02B 3/00	0	Engines characterised by air compression and subsequent fuel addition (characterised by both fuel-air mixture compression and air compression, or characterised by both positive ignition and compression ignition F02B 11/00)	
M	F02B 3/06	1	with compression ignition (compression ignition engines using air or gas for blowing fuel into compressed air in cylinder F02B 13/02)	
M	F02B 5/00	0	Engines characterised by positive ignition (engines characterised by fuel-air mixture compression with positive ignition F02B 1/02; engines characterised by air compression and subsequent fuel addition with positive ignition F02B 3/02; with non-timed positive ignition F02B 9/06; characterised by both fuel-air mixture compression and air compression, or characterised by both positive ignition and compression ignition F02B 11/00)	
M	F02B 7/00	0	Engines characterised by the fuel-air charge being ignited by compression ignition of an additional fuel (characterised by both fuel-air mixture compression and air compression, or characterised by both positive ignition and compression ignition F02B 11/00)	

CPC NOTICE OF CHANGES 958

DATE: JANUARY 1, 2021

PROJECT RP0711

<u>Type*</u>	<u>Symbol</u>	<u>Indent Level</u> <u>Number of</u> <u>dots (e.g. 0,</u> <u>1, 2)</u>	<u>Title</u> <u>“CPC only” text should normally be</u> <u>enclosed in {curly brackets}**</u>	<u>Transferred to#</u>
M	F02B 9/00	0	Engines characterised by other types of ignition (characterised by both fuel-air mixture compression and air compression, or characterised by both positive ignition and compression ignition F02B 11/00)	
M	F02B 9/02	1	with compression ignition (engines characterised by fuel-air mixture compression with compression ignition F02B 1/12; engines characterised by air compression and subsequent fuel addition with compression ignition F02B 3/06)	
M	F02B 11/00	0	Engines characterised by both fuel-air mixture compression and air compression, or characterised by both positive ignition and compression ignition, e.g. in different cylinders	
M	F02B 19/00	0	Engines characterised by precombustion chambers	
M	F02B 19/10	1	with fuel introduced partly into pre-combustion chamber, and partly into cylinder	
M	F02B 19/12	1	with positive ignition (engines with non-timed positive ignition, and with incandescent chambers F02B 9/08)	
M	F02B 19/14	1	with compression ignition	
M	F02B 25/00	0	Engines characterised by using fresh charge for scavenging cylinders	
M	F02B 25/26	1	Multi-cylinder engines other than those provided for in, or of interest apart from, groups F02B 25/02 - F02B 25/24 (internal-combustion aspects of rotary engines F02B 57/00)	
M	F02B 27/00	0	Use of kinetic or wave energy of charge in induction systems, or of combustion residues in exhaust systems, for improving quantity of charge or for increasing removal of combustion residues	
M	F02B 29/02	1	Other fluid-dynamic features of induction systems for improving quantity of charge (for also imparting a rotation to the charge in the cylinder F02B 31/00)	
M	F02B 29/08	1	Modifying distribution valve timing for charging purposes (F02B 29/06 takes precedence)	
M	F02B 31/00	0	Modifying induction systems for imparting a rotation to the charge in the cylinder (air intakes or induction systems for internal-combustion engines F02M 35/10)	

CPC NOTICE OF CHANGES 958

DATE: JANUARY 1, 2021

PROJECT RP0711

<u>Type*</u>	<u>Symbol</u>	<u>Indent Level</u> <u>Number of dots (e.g. 0, 1, 2)</u>	<u>Title</u> <u>“CPC only” text should normally be enclosed in {curly brackets}**</u>	<u>Transferred to#</u>
M	F02B 33/00	0	Engines characterised by provision of pumps for charging or scavenging	
M	F02B 33/30	3	Control of inlet or outlet ports	
M	F02B 33/42	2	with driven apparatus for immediate conversion of combustion gas pressure into pressure of fresh charge, e.g. with cell-type pressure exchangers	
M	F02B 33/44	1	Passages conducting the charge from the pump to the engine inlet, e.g. reservoirs	
M	F02B 37/00	0	Engines characterised by provision of pumps driven at least for part of the time by exhaust	
M	F02B 37/22	2	by varying cross-section of exhaust passages or air passages {, e.g. by throttling turbine inlets or outlets or by varying effective number of guide conduits} (F02B 37/24 takes precedence)	
M	F02B 39/02	1	Drives of pumps (exhaust drives or combined exhaust and other drives F02B 37/00); Varying pump drive gear ratio	
M	F02B 41/10	2	in exhaust turbines (use of exhaust turbines for charging F02B 37/00)	
M	F02B 53/14	1	Adaptations of engines for driving, or engine combinations with, other devices	
M	F02B 61/00	0	Adaptations of engines for driving vehicles or for driving propellers; Combinations of engines with gearing (the engine torque being divided by a differential gear for driving a scavenging or charging pump and the engine output shaft F02B 39/06; adaptations or combinations of rotary-piston or oscillating-piston engines F02B 53/14)	
M	F02B 71/04	1	Adaptations of such engines for special use; Combinations of such engines with apparatus driven thereby	
M	F02B 75/06	1	Engines with means for equalising torque	
M	F02B 75/10	1	Engines with means for rendering exhaust gases innocuous (apparatus <u>per se</u> F01N 3/00)	
M	F02B 77/02	1	Surface coverings of combustion-gas-swept parts (of pistons F02F 3/10; of cylinders and cylinder heads F02F 1/00)	
M	F02B 79/00	0	Running-in of internal-combustion engines (lubrication thereof F01M 7/00)	

*N = new entries where reclassification into entries is involved; C = entries with modified file scope where reclassification of documents from the entries is involved; Q = new entries which are firstly populated with documents via administrative transfers

CPC NOTICE OF CHANGES 958

DATE: JANUARY 1, 2021

PROJECT RP0711

from deleted (D) entries. Afterwards, the transferred documents into the Q entry will either stay or be moved to more appropriate entries, as determined by intellectual reclassification; T = existing entries with enlarged file scope, which receive documents from C or D entries, e.g. when a limiting reference is removed from the entry title; M = entries with no change to the file scope (no reclassification); D = deleted entries; F = frozen entries will be deleted once reclassification of documents from the entries is completed; U = entries that are unchanged.

NOTES:

- **No {curly brackets} are used for titles in CPC only subclasses, e.g. C12Y, A23Y; 2000 series symbol titles of groups found at the end of schemes (orthogonal codes); or the Y section titles. The {curly brackets} are used for 2000 series symbol titles found interspersed throughout the main trunk schemes (breakdown codes).
- U groups: it is obligatory to display the required “anchor” symbol (U group), i.e. the entry immediately preceding a new group or an array of new groups to be created (in case new groups are not clearly subgroups of C-type groups). Always include the symbol, indent level and title of the U group in the table above.
- All entry types should be included in the scheme changes table above for better understanding of the overall scheme change picture. Symbol, indent level, and title are required for all types.
- “Transferred to” column must be completed for all C, D, F, and Q type entries. F groups will be deleted once reclassification is completed.
- When multiple symbols are included in the “Transferred to” column, avoid using ranges of symbols in order to be as precise as possible.
- For administrative transfer of documents, the following text should be used: “< administrative transfer to XX>”, “<administrative transfer to XX and YY simultaneously>”, or “<administrative transfer to XX, YY, ...and ZZ simultaneously>” when administrative transfer of the same documents is to more than one place.
- Administrative transfer to main trunk groups is assumed to be the source allocation type, unless otherwise indicated.
- Administrative transfer to 2000/Y series groups is assumed to be “additional information”.
- If needed, instructions for allocation type should be indicated within the angle brackets using the abbreviations “ADD” or “INV”: <administrative transfer to XX ADD>, <administrative transfer to XX INV>, or < administrative transfer to XX ADD, YY INV, ... and ZZ ADD simultaneously>.
- In certain situations, the “D” entries of 2000-series or Y-series groups may not require a destination (“Transferred to”) symbol, however it is required to specify “<no transfer>” in the “Transferred to” column for such cases.
- For finalisation projects, the deleted “F” symbols should have <no transfer> in the “Transferred to” column.
- For more details about the types of scheme change, see CPC Guide.

CPC NOTICE OF CHANGES 958

DATE: JANUARY 1, 2021

PROJECT RP0711

B. New, Modified or Deleted Warning(s)

SUBCLASS F02B - INTERNAL-COMBUSTION PISTON ENGINES; COMBUSTION ENGINES IN GENERAL

<u>Type*</u>	<u>Location</u>	<u>Old Warning</u>	<u>New/Modified Warning</u>
M	F02B	In this subclass non-limiting references (in the sense of paragraph 39 of the Guide to the IPC) may still be displayed in the scheme.	{ In this subclass non-limiting references (in the sense of paragraph 39 of the Guide to the IPC) may still be displayed in the scheme. }

*N = new warning, M = modified warning, D = deleted warning

NOTE: The "Location" column only requires the symbol PRIOR to the location of the warning. No further directions such as "before" or "after" are required.

CPC NOTICE OF CHANGES 958

DATE: JANUARY 1, 2021

PROJECT RP0711

C. New, Modified or Deleted Note(s)

SUBCLASS – F02B - INTERNAL-COMBUSTION PISTON ENGINES; COMBUSTION ENGINES IN GENERAL

<u>Type*</u>	<u>Location</u>	<u>Old Note</u>	<u>New/Modified Note</u>
M	F02B	<p>In this subclass, the following terms or expressions are used with the meanings indicated:</p> <p>"positive ignition" means ignition by a source external to the working fluid, e.g. by spark or incandescent source;</p> <p>"charging" means forcing air or fuel-air mixture into engine cylinders and thus embraces super-charging;</p> <p>"scavenging" means forcing the combustion residues from the cylinders other than by movement of the working pistons and thus embraces tuned exhaust systems.</p> <p>Attention is drawn to the Notes preceding class F01, specially as regards Note (1).</p> <p>Engines with specified cycles or number of cylinders are classified in group F02B 75/02 or F02B 75/16, unless other classifying features predominate.</p>	<p>1. In this subclass, the following terms or expression are used with the meanings indicated:</p> <ul style="list-style-type: none"> • "positive ignition" means ignition by a source external to the working fluid, e.g. by spark or incandescent source; • "charging" means forcing air or fuel-air mixture into engine cylinders, and thus includes supercharging; • "scavenging" means forcing the combustion residues from the cylinders other than by movement of the working pistons, and thus includes tuned exhaust systems. <p>2. Attention is drawn to the Notes preceding class F01, especially as regards Note (1).</p> <p>3. Engines with specified cycles or number of cylinders are classified in group F02B 75/02 or F02B 75/16, unless other classifying features predominate.</p>

*N = new note, M = modified note, D = deleted note

NOTE: The "Location" column only requires the symbol PRIOR to the location of the note. No further directions such as "before" or "after" are required.

CPC NOTICE OF CHANGES 958

DATE: JANUARY 1, 2021

PROJECT RP0711

D. New, Modified or Deleted Guidance Heading(s)

SUBCLASS F02B - INTERNAL-COMBUSTION PISTON ENGINES; COMBUSTION ENGINES IN GENERAL

<u>Type*</u>	<u>Location</u>	<u>Old Guidance Heading</u>	<u>New/Modified Guidance Heading</u>
M	F02B 1/00 – F02B11/00	Engines characterised by the working fluid to be compressed, or characterised by the type of ignition (with both fuel-air mixture compression and air-compression, or with both positive ignition and compression ignition F02B 11/00; with pre-combustion chambers F02B 19/00; having air storage chambers F02B 21/00; with special shape or construction of other combustion chambers F02B 23/00)	Engines characterised by the working fluid to be compressed or characterised by the type of ignition
M	F02B13/00 – F02B17/00	Engines characterised by the method of introducing fuel into cylinders (characterised by use of gaseous or solid fuels F02B 43/00, F02B 45/00; carburettors, fuel-injection apparatus F02M)	Engines characterised by the method of introducing liquid fuel into cylinders
M	F02B19/00 – F02B23/00	Engines characterised by having pre-combustion chambers or air storage chambers, or characterised by shape or construction of combustion chambers to improve operation (engines with incandescent chambers F02B 9/08)	Engines characterised by precombustion chambers or air-storage chambers, or characterised by special shape or construction of combustion chambers to improve operation
M	F02B25/00 – F02B31/00	Engines characterised by provisions for charging or scavenging (aspects concerned with driven charging or scavenging pumps F02B 33/00 - F02B 39/00)	Engines characterised by provision for charging or scavenging
M	F02B33/00 – F02B41/00	Engines characterised by provision of driven charging or scavenging pumps (introducing fuel into cylinders by air-pressure F02B 13/00; after-charging F02B 29/06; arrangements of such pumps or other auxiliary apparatus on engines F02B 67/00; combined engine and pump control, control dependent on variables other than those generic to pump F02D {Details or constructional aspects of turbines F01D; turbochargers F02C; pumps F04})	Engines characterised by provision of driven charging or scavenging pumps

CPC NOTICE OF CHANGES 958

DATE: JANUARY 1, 2021

PROJECT RP0711

<u>Type*</u>	<u>Location</u>	<u>Old Guidance Heading</u>	<u>New/Modified Guidance Heading</u>
M	F02B43/00 – F02B45/00	Engines operating on non-liquid fuels; Plants including such engines, i.e. combinations of the engines with fuel-generating apparatus (engines having gas-air charge ignited by compression-ignition of an additional fuel F02B 7/06; engines convertible from gas to other fuel consumption F02B 69/04; apparatus for generating fuel, e.g. gas, see the relevant classes, e.g. C10)	Engines operating on non-liquid fuels; Plants including such engines, i.e. combinations of the engine with fuel-generating apparatus
M	F02B47/00 – F02B51/00	Methods of operating engines involving specific pre-treating of, or adding specific substances to, combustion air, or fuel air-mixture, of the engines and not otherwise provided for (apparatus for performing such pre-treatment or additions F02M)	Methods of operating engines involving specific pre-treating of, or adding specific substances to, combustion air, fuel or fuel-air mixture of the engines, and not otherwise provided for
M	F02B61/00 – F02B65/00	Adaptations of engines for special use; Combinations of engines with devices other than engine parts or auxiliaries (of rotary-piston or oscillating-piston engines F02B 53/14; aspects predominantly concerning such devices, <u>see the relevant classes for the devices</u>)	Adaptations of engines for special use; Combinations of engines with devices other than engine parts or auxiliaries

*N = new guidance heading, M = modified guidance heading, D = deleted guidance heading

NOTES:

- The “Location” column requires the symbol AFTER the guidance heading location. No further directions such as “before” or “after” are required.
- In cases where there may be confusion as to whether a new group falls within the scope of a guidance heading, indicate the guidance heading and whether the group does or does not go with the guidance heading. This can be included in the “Location” column. For example, the guidance heading “Compounds containing carbon together with sulfur, selenium or tellurium with or without hydrogen, halogens, oxygen or nitrogen” encompasses groups C07C 301/00-395/00 only. If a new group C07C 398/00 is proposed and is included in the guidance heading scope, indicate this in the “Location” column as follows: 398/00 to be included under the guidance heading: “Compounds containing carbon together with sulfur, selenium or tellurium with or without hydrogen, halogens, oxygen or nitrogen.”

2. A. DEFINITIONS (new)

F02B 29/02

References

Limiting references

This place does not cover:

for also imparting a rotation to the charge in the cylinder	F02B 31/00
---	------------

Informative references

Attention is drawn to the following places, which may be of interest for search:

Air intakes; Induction systems for internal-combustion engines	F02M 35/10
--	------------

F02B 29/04

Informative references

Attention is drawn to the following places, which may be of interest for search:

Liquid cooling circuits not specific to a single part of internal combustion engine	F01P 3/20
---	-----------

DATE: JANUARY 1, 2021

PROJECT RP0711

Arrangement or mounting of liquid cooling devices in vehicles	B60K 11/04
---	------------

F02B 29/08

References

Limiting references

This place does not cover:

After-charging, i.e. supplementary charging after scavenging	F02B 29/06
--	------------

Informative references

Attention is drawn to the following places, which may be of interest for search:

Valve-gear therefor	F01L
---------------------	------

2. A. DEFINITIONS (modified)

F02B

References

Insert: New Limiting references section and table shown below.

Limiting references

This place does not cover:

Gas-turbine plants	F02C
Hot-gas or combustion-product positive-displacement engine plants	F02G

Informative references

Attention is drawn to the following places, which may be of interest for search:

Delete: The following rows from the Informative references table:

“Gas turbine plants”

“Use of waste heat of combustion engines”

“Apparatus for performing such pretreatments or additions”

Insert: The following new row in the Informative references table:

Controlling combustion engines	F02D
--------------------------------	------

Glossary of terms

Replace: In the last sentence of the “Engine” entry, replace the word “meter” with the word “motor” as shown below.

In this place, the following terms or expressions are used with the meaning indicated:

engine	a device for continuously converting fluid energy into mechanical power. Thus, this term includes, for example, steam piston engines or steam turbines, per se, or internal-combustion piston engines, but it excludes single-stroke devices. "Engine" also includes the fluid-motive portion of a motor unless such portion is particularly adapted for use in a motor;
--------	--

DATE: JANUARY 1, 2021

PROJECT RP0711

F02B1/00**References****Limiting references**

Delete: In the Limiting references table, delete all rows EXCEPT for the one shown below:

This place does not cover:

Characterised by both fuel-air mixture compression and air compression, or characterised by both positive ignition and compression ignition	F02B11/00
---	-----------

Insert: Informative references section and table as shown below:

Informative references

Attention is drawn to the following places, which may be of interest for search:

Characterised by precombustion chambers	F02B19/00
Characterised by air-storage chambers	F02B21/00
Characterised by special shape or construction of combustion chambers	F02B23/00

F02B3/00**References****Limiting references**

Delete: All rows EXCEPT for the one shown below:

This place does not cover:

Characterised by both fuel-air mixture compression and air compression, or characterised by both positive ignition and compression ignition	F02B11/00
---	-----------

Informative references

Insert: The new Informative references section and table shown below:

Attention is drawn to the following places, which may be of interest for search:

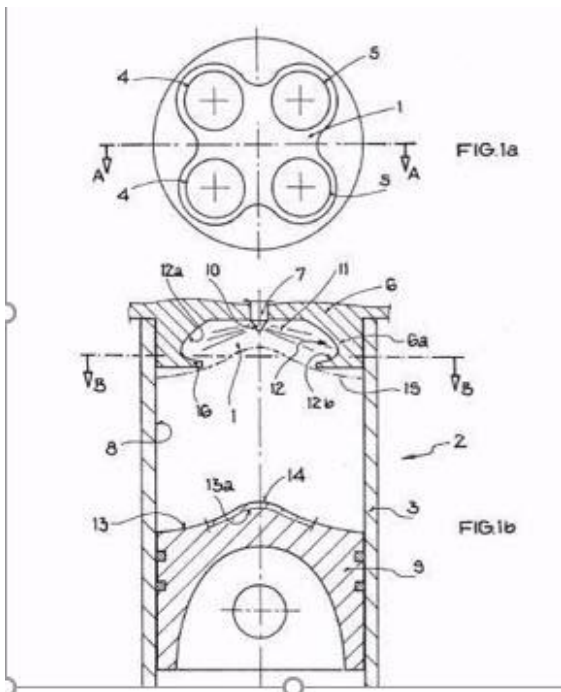
Characterised by precombustion chambers	F02B19/00
Characterised by air-storage chambers	F02B21/00
Characterised by special shape or construction of combustion chambers	F02B23/00

F02B3/06

Definition statement

This place covers:

Replace: The existing image with the new one shown below:



DATE: JANUARY 1, 2021

PROJECT RP0711

References

Insert: New Limiting references section and table.

Limiting references

This place does not cover:

Engines with positive injection	F02B13/02
---------------------------------	-----------

Insert: New Informative references section and table.

Informative references

Attention is drawn to the following places, which may be of interest for search:

Engines with fuel-air charge ignited by compression ignition of an additional fuel	F02B7/00
--	----------

F02B5/00

References

Insert: The following new table rows into Limiting references.

Limiting references

This place does not cover:

Engines with non-timed positive ignition, e.g. with hot-spots	F02B9/06
Engines characterised by both fuel-air mixture compression and air compression, or characterised by both positive ignition and compression ignition	F02B11/00

Informative references

Delete: The following rows from Informative references:

DATE: JANUARY 1, 2021

PROJECT RP0711

“Engines with non-timed positive ignition, e.g. with hot spots”

“Engines characterized by both fuel air mixture compression and air compression, or characterized by both positive ignition and compression ignition.”

Insert: The following new rows in Informative references:

Attention is drawn to the following places, which may be of interest for search:

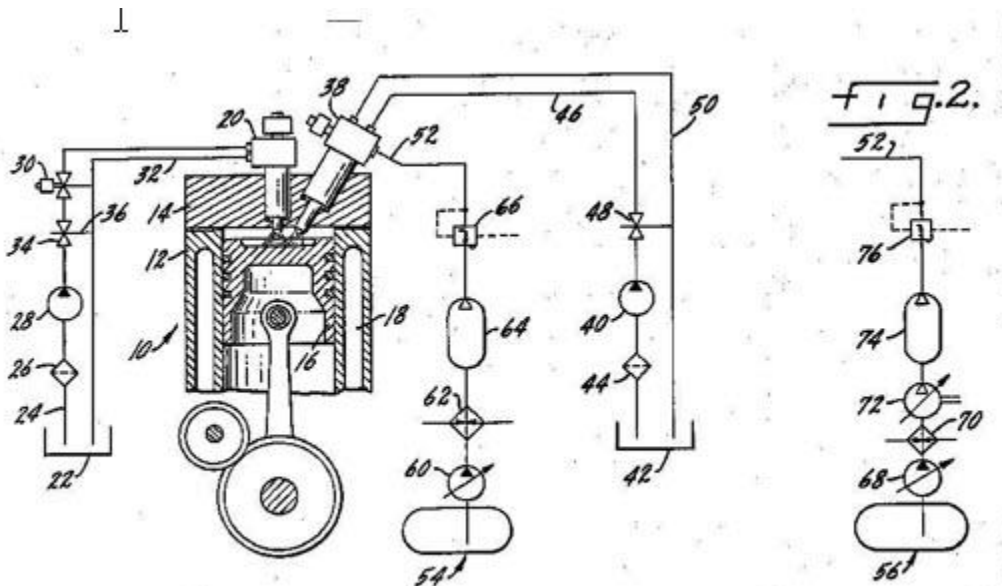
Engines characterised by precombustion chambers	F02B19/00
Engines characterised by air-storage chambers	F02B21/00

F02B7/00

Definition statement

This place covers:

Replace: Existing image with the new image shown below:



DATE: JANUARY 1, 2021

PROJECT RP0711

References

Insert: New Limiting references section and table.

Limiting references

This place does not cover:

Engines characterised by both fuel-air mixture compression and air compression, or characterised by both positive ignition and compression ignition	F02B11/00
---	-----------

Informative references

Delete: The following row from Informative references:

Engines characterised by both fuel air mixture and air compression, or characterised by both positive ignition and compression ignition	F02B11/00
---	-----------

F02B9/00

References

Insert: New Limiting references section and table shown below:

Limiting references

This place does not cover:

Engines characterised by both fuel-air mixture compression and air compression, or characterised by both positive ignition and compression ignition	F02B11/00
---	-----------

Informative references

Delete: The following row from the Informative references table:

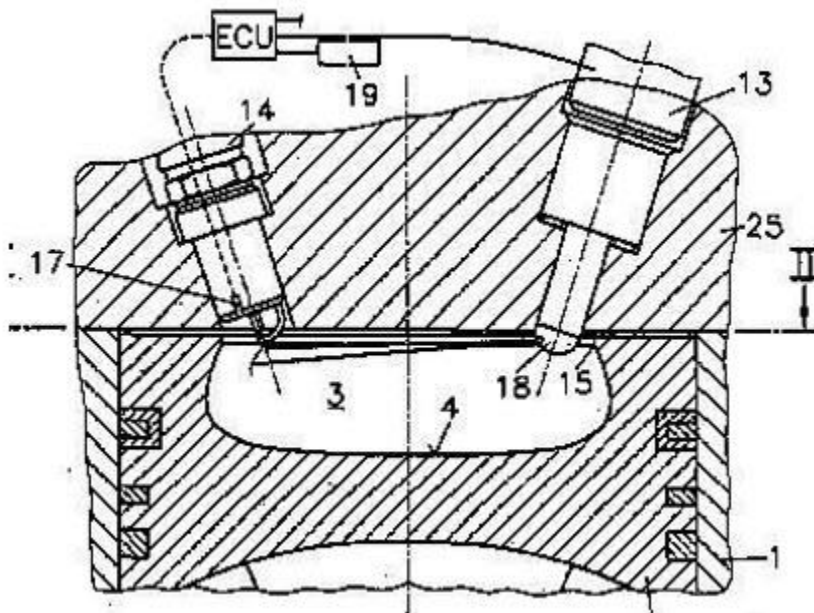
Engines characterised by both fuel-air mixture compression and air compression, or characterised by both positive ignition and compression ignition	F02B11/00
---	-----------

F02B11/00

Definition statement

This place covers:

Replace: Existing image with the new image shown below:



DATE: JANUARY 1, 2021

PROJECT RP0711

F02B19/00**References**

Delete: The Limiting references section and table.

Informative references

Insert: The following new rows in the Informative references table:

Attention is drawn to the following places, which may be of interest for search:

Engines with incandescent chambers	F02B9/08
Engines with air storage cambers	F02B21/00

F02B25/00**References**

Delete: Limiting references section and table.

Informative references

Attention is drawn to the following places, which may be of interest for search:

Insert: The following new rows in the Informative references table:

Aspects characterized by provision of driven charging or scavenging pumps.	F02B33/00 - F02B39/00
Rotary engines	F02B57/00

Glossary of terms

Replace: The word "directionin" with the words "direction in" as shown below:

In this place, the following terms or expressions are used with the meaning indicated:

Unidirectional scavenging	Scavenging gas flows in one direction in the cylinder
---------------------------	---

DATE: JANUARY 1, 2021

PROJECT RP0711

F02B27/00**References**Delete: Limiting references section and table.**Informative references***Attention is drawn to the following places, which may be of interest for search:*Insert: The following new rows in the Informative references table:

Aspects characterized by provision of driven charging or scavenging pumps	F02B33/00 - F02B39/00
Use of driven apparatus for immediate conversion of combustion gas pressure into pressure of fresh charge	F02B33/42

F02B31/00**References****Limiting references***This place does not cover:*Replace: The Limiting references table with the one below:

Air induction systems structural features	F02M35/10
---	-----------

Informative references*Attention is drawn to the following places, which may be of interest for search:*Replace: The Informative references table with the one below:

Shape of combustion chamber	F02B23/00
Lift valves	F01L3/00
Cylinders, cylinder heads	F02F1/00

DATE: JANUARY 1, 2021

PROJECT RP0711

F02B33/00

Insert: New Relationships with other classification places section and text as shown below:

Relationships with other classification places

Turbochargers per se are classified in F02C6/12.

References**Informative references**

Attention is drawn to the following places, which may be of interest for search:

Replace: The existing Informative references table with the one below:

Characterised by introducing fuel into cylinders by auxiliary fluid, e.g. by air-pressure	F02B13/00
Characterised by after-charging	F02B29/06
Characterised by provision of pumps for sucking combustion residues from cylinders	F02B35/00
Characterised by provision of exhaust-driven pumps	F02B37/00
Arrangements of such pumps or other auxiliary apparatus on engines	F02B67/00
Combined engine and pump control, control dependent on variables other than those generic to pumps	F02D
Cylinders characterised by having ports in cylinder for scavenging or charging	F02F1/22
Pumps per se	F04

F02B33/30

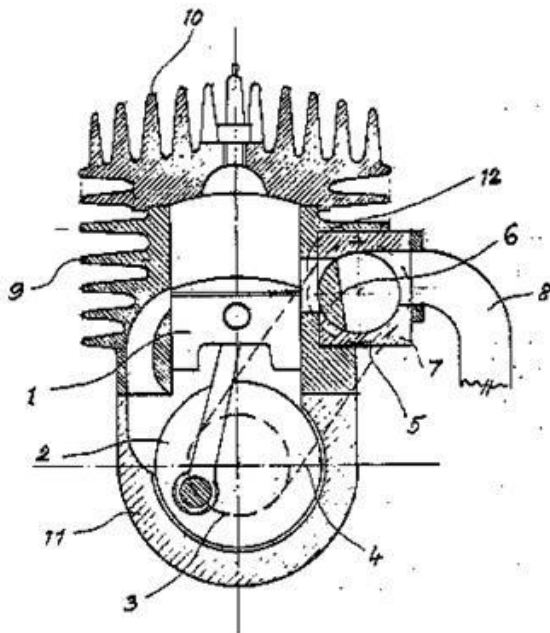
Delete: Special rules of classification section.

Insert: New Definition statement and image as shown below:

Definition statement

This place covers:

Illustrative example of subject matter classified in this group.



References

Insert: New Informative references section and table.

Informative references

Attention is drawn to the following places, which may be of interest for search:

Controlling only working-cylinder inlets	F01L
--	------

DATE: JANUARY 1, 2021

PROJECT RP0711

F02B35/00**References****Informative references***Attention is drawn to the following places, which may be of interest for search:*Insert: The following new row to the Informative references table.

Combined engine and pump control, control dependent on variables other than those generic to pump	F02D
---	------

F02B37/00Insert: New Relationships with other classification places and text.**Relationships with other classification places**

Turbochargers per se are classified in F02C6/12.

ReferencesDelete: Limiting references section and table.**Informative references***Attention is drawn to the following places, which may be of interest for search:*Replace: Existing Informative references table with the one below:

Engines characterised by the introduction of liquid fuel into cylinders by use of auxiliary fluid	F02B13/00
Characterised by after-charging	F02B29/06
Characterised by passages conducting the charge from the pump to the engine inlet	F02B33/44
Turbo-compound	F02B41/10

DATE: JANUARY 1, 2021

PROJECT RP0711

Arrangements of such pumps or other auxiliary apparatus on engines	F02B67/00
Details or constructional aspects of turbines per se	F01D17/00
Constructional aspects of bypass valves in turbochargers	F01D17/10
Final actuators for bypassing part of the fluid in non-positive displacement machines or engines	F01D17/105
Turbocharger casings, arrangement of bearings in turbochargers, cooling or lubrication of turbochargers per se	F01D25/00
Combined engine and pump control, control dependent on variables other than those generic to pump	F02D
Pumps	F04
Constructional aspects of pumps	F04C
Controls of pumps	F04D15/00
Valves in general	F16K

F02B37/12

References

Delete: Limiting references section and table.

Insert: Informative references section and table shown below:

Informative references

Attention is drawn to the following places, which may be of interest for search:

Details or constructional aspects of turbines	F01D
Final actuators for regulating or controlling by varying flow in non-positive displacement machines	F01D 17/10
Combined engine and pump control, control dependent on variables other than those generic to pump	F02D
Controlling supercharged engines	F02D23/00
Pumps	F04

DATE: JANUARY 1, 2021

PROJECT RP0711

F02B37/22

References

Limiting references

Delete: The following row from the Limiting references table:

This place does not cover:

Constructional aspects per se of such devices	F01D17/14
---	---------------------------

Informative references

Insert: New Informative references section and table.

Attention is drawn to the following places, which may be of interest for search:

Constructional aspects per se of such devices	F01D17/14
---	---------------------------

F02B39/00

References

Delete: Limiting references section and table.

Insert: New Informative references section and table.

Informative references

Attention is drawn to the following places, which may be of interest for search:

DATE: JANUARY 1, 2021

PROJECT RP0711

Engines characterised by provision of driven charging or scavenging pumps. Introducing fuel into cylinders by air-pressure	F02B13/00
After-charging	F02B29/06
Arrangements of such pumps or other auxiliary apparatus on engines	F02B67/00
Details or constructional aspects of turbines	F01D
Combined engine and pump control, control dependent on variables other than those generic to pump	F02D
Pumps	F04
Pumps in general	F04
Machine element per se	F16

F02B39/02

References

Limiting references

Replace: Limiting references table with the one below:

This place does not cover:

Exhaust drives or combined exhaust and other drives	F02B37/00
---	-----------

Informative references

Replace: Informative references table with the one below:

Attention is drawn to the following places, which may be of interest for search:

Control acting both on engine and on pump drive gear ratio	F02D
--	------

F02B41/10

Definition statement

This place covers:

Replace: The term "E.g." with the following:

DATE: JANUARY 1, 2021

PROJECT RP0711

Illustrative example of subject matter classified in this group:

References

Insert: New Limiting references section and table.

Limiting references

This place does not cover:

Use of exhaust turbines for charging	F02B37/00
--------------------------------------	-----------

Informative references

Delete: All references EXCEPT the one shown below:

Attention is drawn to the following places, which may be of interest for search:

Turbine construction	F01D
----------------------	------

F02B61/00

Definition statement

Replace: The Definition statement text AND image as shown below:

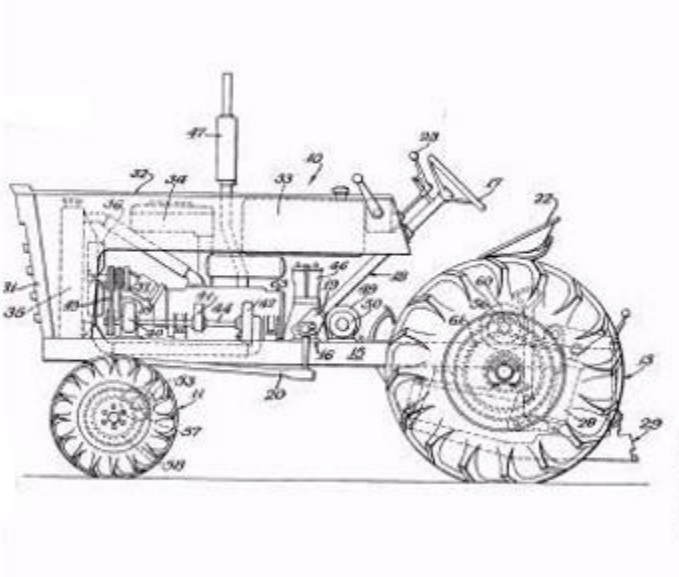
This place covers:

Adaptations of engines for driving vehicles or for driving propellers; Combinations of engines with gearing.

Illustrative example of subject matter classified in this group:

DATE: JANUARY 1, 2021

PROJECT RP0711



References

Limiting references

This place does not cover:

Delete: The following row from the Limiting references table:

Arrangements in vehicles	See the relevant classes for the specific vehicles
--------------------------	--

F02B75/10

References

Limiting references

Delete: The following row from the Limiting references table:

This place does not cover:

Control of combustion engines	F02D
-------------------------------	------

DATE: JANUARY 1, 2021

PROJECT RP0711

Informative references

Insert: The Informative references section and table as shown below:

Attention is drawn to the following places, which may be of interest for search:

Control of combustion engines	F02D
-------------------------------	------

F02B77/02

References

Limiting references

Replace: The existing Limiting references table with the updated one shown below:

This place does not cover:

Surface coverings of pistons	F02F 3/10
Surface coverings of cylinders and cylinder heads	F02F 1/00

F02B79/00

References

Delete: Informative references section and table

Insert: New Limiting references section and table.

Limiting references

CPC NOTICE OF CHANGES 958

DATE: JANUARY 1, 2021

PROJECT RP0711

This place does not cover:

Lubrication of internal combustion engines	F01M 7/00
--	-----------