

EUROPEAN PATENT OFFICE
U.S. PATENT AND TRADEMARK OFFICE

CPC NOTICE OF CHANGES 923

DATE: AUGUST 1, 2020

PROJECT RP0125

The following classification changes will be effected by this Notice of Changes:

<u>Action</u>	<u>Subclass</u>	<u>Group(s)</u>
SCHEME:		
Symbols Deleted Pending Reclassification: (frozen (F))	B65H	16/025, 16/026
Symbols New:	B65H	16/024
	B65H	18/0212
Warnings New:	B65H	16/00, 16/021, 16/023, 16/024, 16/025, 16/026
	B65H	18/021, 18/0212
	B65H	2220/03
	B65H	2511/11
DEFINITIONS:		
Definitions Deleted: (no frozen (F) symbol definitions should be deleted)		
Definitions New:	B65H	16/024, 18/0212, 19/1868, 19/2215
Definitions Modified:	B65H	16/00, 16/005, 16/02, 16/023, 19/2223

The following subclasses/groups are also impacted by this Notice of Changes (indicate subclasses/groups outside of the project scope, such as those listed in the CRL): *D06H3/00, G01B21/06, G01B21/00*

This Notice of Changes includes the following [Check the ones included]:

1. CLASSIFICATION SCHEME CHANGES

- A. New, Modified or Deleted Group(s)
- B. New, Modified or Deleted Warning(s)
- C. New, Modified or Deleted Note(s)
- D. New, Modified or Deleted Guidance Heading(s)

2. DEFINITIONS

- A. New or Modified Definitions (Full definition template)
- B. Modified or Deleted Definitions (Definitions Quick Fix)

3. REVISION CONCORDANCE LIST (RCL)

4. CHANGES TO THE CPC-TO-IPC CONCORDANCE LIST (CICL)

5. CHANGES TO THE CROSS-REFERENCE LIST (CRL)

CPC NOTICE OF CHANGES 923

DATE: AUGUST 1, 2020

PROJECT RP0125

1. CLASSIFICATION SCHEME CHANGES

A. New, Modified or Deleted Group(s)

SUBCLASS B65H - HANDLING THIN OR FILAMENTARY MATERIAL, e.g. SHEETS, WEBS, CABLES

<u>Type*</u>	<u>Symbol</u>	<u>Indent Level Number of dots (e.g. 0, 1, 2)</u>	<u>Title (new or modified) "CPC only" text should normally be enclosed in {curly brackets}**</u>	<u>Transferred to#</u>
T	B65H 16/02	1	Supporting web roll	
C	B65H 16/021	2	{Multiple web roll supports}	B65H 16/021, B65H 16/024
C	B65H 16/023	3	{rotatable}	B65H 16/023, B65H 16/024
N	B65H 16/024	4	{Turrets}	
F	B65H 16/025	2	{Unwinding apparatus incorporating length-measuring devices}	B65H 16/00, B65H 16/005, B65H 16/02, B65H 16/021, B65H 16/028, B65H 16/04, B65H 16/06, B65H 16/08, B65H 16/10, B65H 16/103, B65H 16/106, B65H 2511/11, B65H 2220/03
F	B65H 16/026	2	{Unwinding apparatus incorporating inspecting devices}	B65H 16/00, B65H 16/005, B65H 16/02, B65H 16/021, B65H 16/028, B65H 16/04, B65H 16/06, B65H 16/08, B65H 16/10, B65H 16/103, B65H 16/106
C	B65H 18/021	2	{Multiple web roll supports}	B65H 18/021, B65H 18/0212
N	B65H 18/0212	3	{Turrets}	
T	B65H 2220/03	1	indicating an entity which is measured, estimated, evaluated, calculated or determined but which does not constitute an entity which is adjusted or changed by the control process <u>per se</u>	
T	B65H 2511/11	2	Length	

CPC NOTICE OF CHANGES 923

DATE: AUGUST 1, 2020

PROJECT RP0125

*N = new entries where reclassification into entries is involved; C = entries with modified file scope where reclassification of documents from the entries is involved; Q = new entries which are firstly populated with documents via administrative transfers from deleted (D) entries. Afterwards, the transferred documents into the Q entry will either stay or be moved to more appropriate entries, as determined by intellectual reclassification; T= existing entries with enlarged file scope, which receive documents from C or D entries, e.g. when a limiting reference is removed from the entry title; M = entries with no change to the file scope (no reclassification); D = deleted entries; F = frozen entries will be deleted once reclassification of documents from the entries is completed; U = entries that are unchanged.

NOTES:

- **No {curly brackets} are used for titles in CPC only subclasses, e.g. C12Y, A23Y; 2000 series symbol titles of groups found at the end of schemes (orthogonal codes); or the Y section titles. The {curly brackets} are used for 2000 series symbol titles found interspersed throughout the main trunk schemes (breakdown codes).
- U groups: it is obligatory to display the required “anchor” symbol (U group), i.e. the entry immediately preceding a new group or an array of new groups to be created (in case new groups are not clearly subgroups of C-type groups). Always include the symbol, indent level and title of the U group in the table above.
- All entry types should be included in the scheme changes table above for better understanding of the overall scheme change picture. Symbol, indent level, and title are required for all types.
- “Transferred to” column must be completed for all C, D, F, and Q type entries. F groups will be deleted once reclassification is completed.
- When multiple symbols are included in the “Transferred to” column, avoid using ranges of symbols in order to be as precise as possible.
- For administrative transfer of documents, the following text should be used: “< administrative transfer to XX>”, “<administrative transfer to XX and YY simultaneously>”, or “<administrative transfer to XX, YY, ...and ZZ simultaneously>” when administrative transfer of the same documents is to more than one place.
- Administrative transfer to main trunk groups is assumed to be the source allocation type, unless otherwise indicated.
- Administrative transfer to 2000/Y series groups is assumed to be “additional information”.
- If needed, instructions for allocation type should be indicated within the angle brackets using the abbreviations “ADD” or “INV”: <administrative transfer to XX ADD> , <administrative transfer to XX INV>, or < administrative transfer to XX ADD, YY INV, ... and ZZ ADD simultaneously>.
- In certain situations, the “D” entries of 2000-series or Y-series groups may not require a destination (“Transferred to”) symbol, however it is required to specify “<no transfer>” in the “Transferred to” column for such cases.
- For finalisation projects, the deleted “F” symbols should have <no transfer> in the “Transferred to” column.
- For more details about the types of scheme change, see CPC Guide.

CPC NOTICE OF CHANGES 923

DATE: AUGUST 1, 2020

PROJECT RP0125

B. New, Modified or Deleted Warning(s)

SUBCLASS B65H - HANDLING THIN OR FILAMENTARY MATERIAL, e.g. SHEETS, WEBS, CABLES

Type	Location	Old warning	New warning
N	B65H 16/00		Groups B65H 16/00, B65H 16/005, B65H 16/02, B65H 16/028, B65H 16/04, B65H 16/06, B65H 16/08, B65H 16/10, B65H 16/103, and B65H 16/106 are incomplete pending reclassification of documents from groups B65H 16/025 and B65H 16/026. All groups listed in this Warning should be considered in order to perform a complete search.
N	B65H 16/021		Group B65H 16/021 is incomplete pending reclassification of documents from groups B65H 16/025 and B65H 16/026. Group B65H 16/021 is also impacted by reclassification into group B65H 16/024. All groups listed in this Warning should be considered in order to perform a complete search.
N	B65H 16/023		Group B65H 16/023 is impacted by reclassification into group B65H 16/024. Groups B65H 16/023 and B65H 16/024 should be considered in order to perform a complete search.
N	B65H 16/024		Group B65H 16/024 is incomplete pending reclassification of documents from groups B65H 16/021 and B65H 16/023. Groups B65H 16/021, B65H 16/023, and B65H 16/024 should be considered in order to perform a complete search.
N	B65H 16/025		Group B65H 16/025 is no longer used for the classification of documents as of August 1, 2020. The content of this group is being reclassified into groups B65H 16/00, B65H 16/005, B65H 16/02, B65H 16/021, B65H 16/028, B65H 16/04, B65H 16/06, B65H 16/08, B65H 16/10, B65H 16/103, B65H 16/106, B65H 2511/11, and B65H 2220/03. All groups listed in this Warning should be considered in order to perform a complete search.

CPC NOTICE OF CHANGES 923

DATE: AUGUST 1, 2020

PROJECT RP0125

Type	Location	Old warning	New warning
N	B65H 16/026		Group B65H 16/026 is no longer used for the classification of documents as of August 1, 2020. The content of this group is being reclassified into groups B65H 16/00, B65H 16/005, B65H 16/02, B65H 16/021, B65H 16/028, B65H 16/04, B65H 16/06, B65H 16/08, B65H 16/10, B65H 16/103, and B65H 16/106. All groups listed in this Warning should be considered in order to perform a complete search.
N	B65H 18/021		Group B65H 18/021 is impacted by reclassification into group B65H 18/0212. Groups B65H 18/021 and B65H 18/0212 should be considered in order to perform a complete search.
N	B65H 18/0212		Group B65H 18/0212 is incomplete pending reclassification of documents from group B65H 18/021. Groups B65H 18/021 and B65H 18/0212 should be considered in order to perform a complete search.
N	B65H 2220/03		Group B65H 2220/03 is incomplete pending reclassification of documents from group B65H 16/025. Groups B65H 16/025 and B65H 2220/03 should be considered in order to perform a complete search.
N	B65H 2511/11		Group B65H 2511/11 is incomplete pending reclassification of documents from group B65H 16/025. Groups B65H 16/025 and B65H 2511/11 should be considered in order to perform a complete search.

*N = new warning, M = modified warning, D = deleted warning

NOTE: The "Location" column only requires the symbol PRIOR to the location of the warning. No further directions such as "before" or "after" are required.

2. A. DEFINITIONS (New)

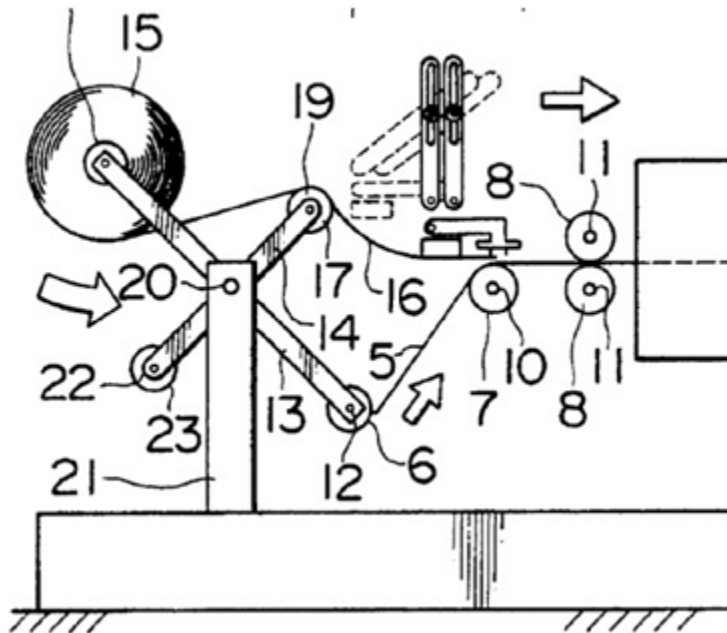
Insert: The following new Definitions.

B65H 16/024

Definition statement

This place covers:

Illustrative example of subject matter classified in this group:



References

Informative References

For unwinding	B65H 19/1868
---------------	------------------------------

Special rules of classification

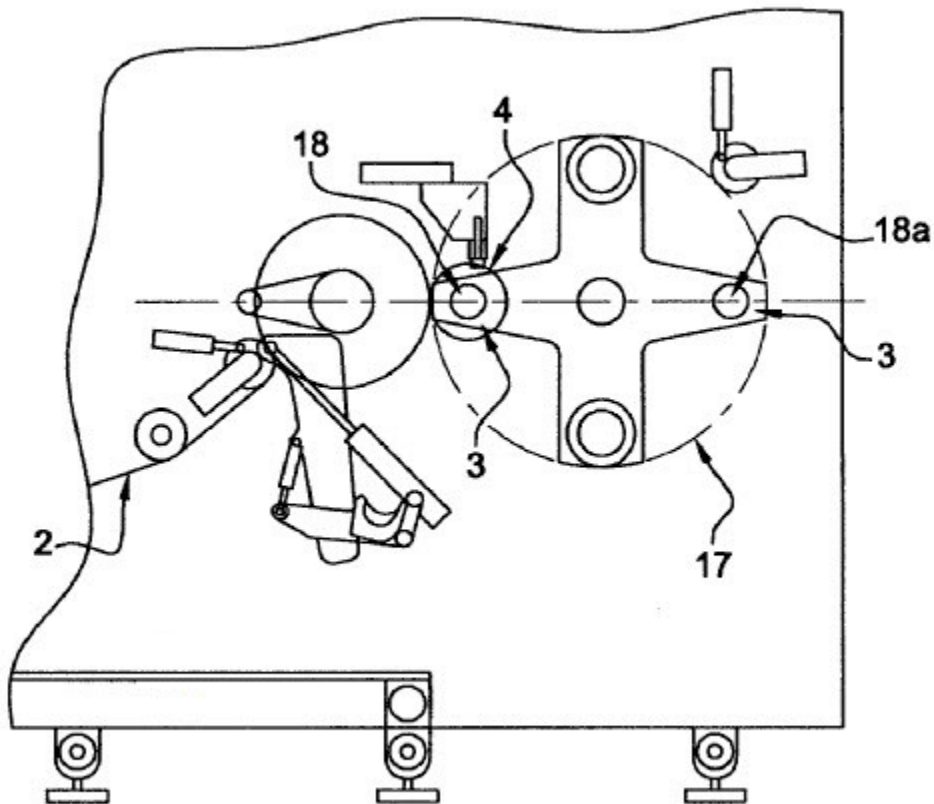
The [B65H 2408/241](#) - [B65H 2408/24156](#) Indexing Codes are obligatory and applied to documents in [B65H 16/024](#).

B65H 18/0212

Definition statement

This place covers:

Illustrative example of subject matter classified in this group:



References

Informative References

For winding	B65H 19/2215, B65H 19/2223
-------------	-------------------------------

Special rules of classification

CPC NOTICE OF CHANGES 923

DATE: AUGUST 1, 2020

PROJECT RP0125

The [B65H 2408/231](#) - [B65H 2408/23157](#) Indexing Codes are obligatory and applied to documents in [B65H 18/0212](#).

B65H 19/1868

Special rules of classification

The [B65H 2408/241](#) - [B65H 2408/24156](#) and [B65H 2408/231](#) - [B65H 2408/23157](#) Indexing Codes are obligatory and applied to documents in [B65H 19/1868](#).

B65H 19/2215

Special rules of classification

The [B65H 2408/231](#) - [B65H 2408/23157](#) Indexing Codes are obligatory and applied to documents in [B65H 19/2215](#).

2. A. DEFINITIONS (modified)

B65H 16/00

Definition statement

Replace: The existing Definition statement text with the following new text.

Unwinding processes or operations for a depleting the web continuously and mechanisms therefor.

References

Limiting references

Replace: The existing Limiting references table row with the following new table row.

Reel-to-reel type web winding and unwinding mechanisms	B65H 18/103, B65H 18/145
--	-----------------------------

Informative references

Insert: The following new row into the Informative references table.

Devices or arrangements of selective printing mechanisms, e.g. ink-jet printers, thermal printers	B41J 1/00
---	-----------

DATE: AUGUST 1, 2020

PROJECT RP0125

B65H 16/005

References

Delete: The entire existing Limiting references table.

Insert: The following new Informative references section.

Informative references

Attention is drawn to the following places, which may be of interest for search:

For constructional details of cores, supports or holders for wound material	B65H 75/02
---	----------------------------

Insert: The following new Application-oriented references section.

Application-oriented references

Examples of places where the subject matter of this place is covered when specially adapted, used for a particular purpose, or incorporated in a larger system:

Toilet paper dispensers	A47K 10/32
Containers or packages with special means for dispensing contents	B65D 83/00

B65H 16/02

References

Delete: The entire existing Limiting references section.

Insert: The following new Informative references section.

Informative references:

Attention is drawn to the following places, which may be of interest for search:

B65H 16/023

Definition statement

Insert: The following new image beneath the existing Definition statement text.

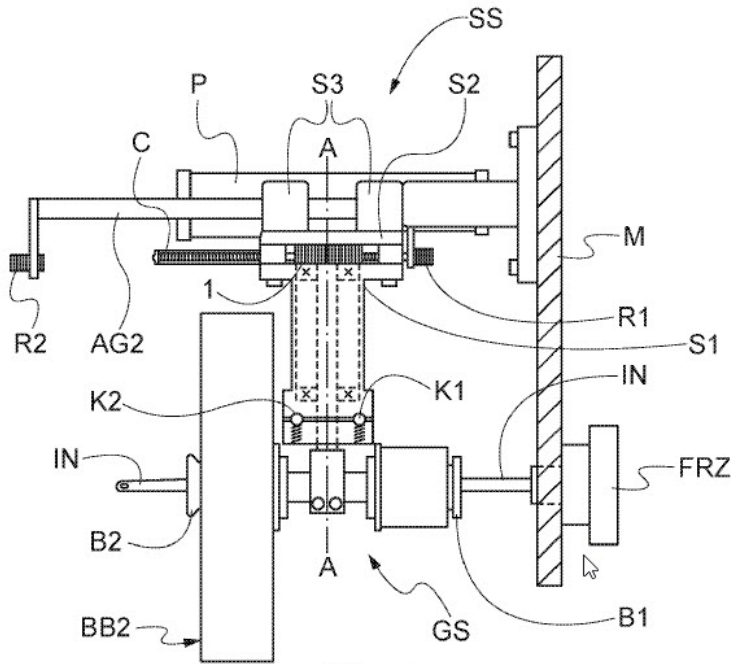


Fig. 1

CPC NOTICE OF CHANGES 923

DATE: AUGUST 1, 2020

PROJECT RP0125

B65H 19/2223

Insert: The following new Special rules of classification section.

Special rules of classification

The [B65H 2408/231](#) - [B65H 2408/23157](#) Indexing Codes are obligatory and applied to documents in [B65H 19/2223](#).

CPC NOTICE OF CHANGES 923

DATE: AUGUST 1, 2020

PROJECT RP0125

3. REVISION CONCORDANCE LIST (RCL)

Type*	From CPC Symbol (existing)	To CPC Symbol(s)
C	B65H 16/021	B65H 16/021, B65H 16/024
C	B65H 16/023	B65H 16/023, B65H 16/024
F	B65H 16/025	B65H 16/00, B65H 16/005, B65H 16/02, B65H 16/021, B65H 16/028, B65H 16/04, B65H 16/06, B65H 16/08, B65H 16/10, B65H 16/103, B65H 16/106, B65H 2511/11, B65H 2220/03
F	B65H 16/026	B65H 16/00, B65H 16/005, B65H 16/02, B65H 16/021, B65H 16/028, B65H 16/04, B65H 16/06, B65H 16/08, B65H 16/10, B65H 16/103, B65H 16/106
C	B65H 18/021	B65H 18/021, B65H 18/0212

* C = entries with modified file scope where reclassification of documents from the entries is involved; Q = new entries which are firstly populated with documents via administrative transfers from deleted (D) entries. Afterwards, the transferred documents into the Q entry will either stay or be moved to more appropriate entries, as determined by intellectual reclassification; D = deleted entries; F = frozen entries will be deleted once reclassification of documents from the entries is completed.

NOTES:

- Only C, D, F, and Q type entries are included in the table above.
- When multiple symbols are included in the “To” column, do not use ranges of symbols.
- For administrative transfer of documents, the following text should be used: “< administrative transfer to XX>”, “<administrative transfer to XX and YY simultaneously>”, or “<administrative transfer to XX, YY, ...and ZZ simultaneously>” when administrative transfer of the same documents is to more than one place.
- Administrative transfer to main trunk groups is assumed to be the source allocation type, unless otherwise indicated.
- Administrative transfer to 2000/Y series groups is assumed to be “additional information”.
- If needed, instructions for allocation type should be indicated within the angle brackets using the abbreviations “ADD” or “INV”: <administrative transfer to XX ADD>, <administrative transfer to XX INV>, or < administrative transfer to XX ADD, YY INV, ... and ZZ ADD simultaneously>.
- In certain situations, the “D” entries of 2000-series or Y-series groups may not require a destination (“To”) symbol, however it is required to specify “<no transfer>” in the “To” column for such cases.
- RCL is not needed for finalisation projects.

CPC NOTICE OF CHANGES 923

DATE: AUGUST 1, 2020

PROJECT RP0125

4. CHANGES TO THE CPC-TO-IPC CONCORDANCE LIST (CICL)

<u>CPC</u>	<u>IPC</u>	<u>Action*</u>
B65H 16/024	B65H 16/02	NEW
B65H 18/0212	B65H 18/02	NEW

*Action column:

- For an (N) or (Q) entry, provide an IPC symbol and complete the Action column with “NEW.”
- For an existing CPC main trunk entry or indexing entry where the existing IPC symbol needs to be changed, provide an updated IPC symbol and complete the Action column with “UPDATED.”
- For a (D) CPC entry or indexing entry complete the Action column with “DELETE.” IPC symbol does not need to be included in the IPC column.
- For an (N) 2000 series CPC entry which is positioned within the main trunk scheme (breakdown code) provide an IPC symbol and complete the action column with “NEW”.
- For an (N) 2000 series CPC entry positioned at the end of the CPC scheme (orthogonal code), with no IPC equivalent, complete the IPC column with “CPCONLY” and complete the action column with “NEW”.

NOTES:

- F symbols are not included in the CICL table above.
- T and M symbols are not included in the CICL table above unless a change to the existing IPC is desired.

CPC NOTICE OF CHANGES 923

DATE: AUGUST 1, 2020

PROJECT RP0125

5. CROSS-REFERENCE LIST (CRL)

Scheme references impacted by this revision project

<u>Location of reference to be changed</u>	<u>Referenced subclass or group to be changed</u>	<u>Action; New reference symbol; New text</u>
D06H 3/00	B65H 16/026	Delete: The following text and symbol. {(unwinding or rewinding apparatus incorporating inspecting devices B65H 16/026)}
G01B 21/06	B65H 16/025	Delete: The following text and symbol. {(unwinding or rewinding apparatus incorporating length measuring devices B65H 16/025)}

Definitions references impacted by this revision project

<u>Location of reference to be changed</u>	<u>Referenced subclass or group to be changed</u>	<u>Section of definition</u>	<u>Action; New reference symbol; New text</u>
G01B 21/00	B65H 16/025	Informative references	<u>Replace</u> : The existing symbol with the new symbols B65H 16/02 and B65H 2511/11 so that the table row reads as follows. Unwinding or rewinding apparatus incorporating length measuring devices B65H 16/02 , B65H 2511/11

NOTES:

- The CRL tables above are used for changes to locations **outside** of the project scope. Changes to references in scheme titles or definitions **inside** the project scope will be reflected in the “scheme change” template or one of the “definition” templates.
- In addition to other changes proposed in the tables above, in the column titled “Referenced subclass or group to be changed,” **referenced** D symbols should indicate an action of “delete” or should indicate a replacement symbol and **referenced** F symbols should indicate a replacement symbol.

CPC NOTICE OF CHANGES 923

DATE: AUGUST 1, 2020

PROJECT RP0125

- When a reference is deleted, text related to that reference will also be deleted unless other references or a range of references associated with the same text remain.