

EUROPEAN PATENT OFFICE
U.S. PATENT AND TRADEMARK OFFICE

CPC NOTICE OF CHANGES 581

DATE: JANUARY 1, 2019

PROJECT RP0544

The following classification changes will be effected by this Notice of Changes :

<u>Action</u>	<u>Subclass</u>	<u>Group(s)</u>
SCHEME:		
Titles Changed:	F16L	1/00, 1/12, 1/123, 1/20, 1/24, 1/26
	F16L	3/01, 3/015, 3/04
	F16L	5/00
	F16L	9/00, 9/02, 9/06, 9/08, 9/16, 9/18
	F16L	11/00
	F16L	13/007, 13/02, 13/08, 13/14
	F16L	15/00
	F16L	17/00, 17/10
	F16L	21/00
	F16L	23/00
	F16L	25/00, 25/01, 25/02
	F16L	27/02, 27/04, 27/08
	F16L	29/00, 29/02, 29/04
	F16L	33/00, 33/02
	F16L	37/084, 37/12, 37/50
	F16L	39/04
	F16L	41/00, 41/04, 41/082
	F16L	43/00
	F16L	47/00, 47/02, 47/04, 47/06, 47/22
	F16L	49/00, 49/06, 49/08
	F16L	51/00, 51/02
	F16L	55/02, 55/027, 55/04, 55/05, 55/07, 55/09, 55/164, 55/165, 55/17, 55/179, 55/18, 55/24, 55/26
	F16L	57/00
	F16L	58/00, 58/02, 58/04, 58/16, 58/18
	F16L	59/00, 59/12, 59/121, 59/16, 59/21
Warnings Modified:	F16L	SUBCLASS
Notes Deleted:	F16L	55/265 (Note 1)
	F16L	55/265 (Note 2)
Notes New:	F16L	55/26 (Note 1)
	F16L	55/26 (Note 2)
DEFINITIONS:		

CPC NOTICE OF CHANGES 581

DATE: JANUARY 1, 2019

PROJECT RP0544

<u>Action</u>	<u>Subclass</u>	<u>Group(s)</u>
Definitions New:	F16L	1/12, 1/20, 1/24, 1/26, 3/01, 3/015, 3/04, 9/02, 9/06, 9/08, 9/16, 9/18 13/007, 13/02, 13/08, 13/14, 17/10, 25/01, 25/02, 27/02, 27/04, 27/08, 29/02, 29/04, 33/02, 37/50, 41/082, 47/02, 47/04, 47/06, 47/22, 49/06, 49/08, 55/02, 55/027, 55/04, 55/05, 55/07, 55/09, 55/165, 55/179, 55/18, 58/02, 58/04, 58/16, 58/18, 59/12, 59/121, 59/16, 59/21
Definitions Modified:	F16L	SUBCLASS
	F16L	1/00, 1/123, 3/00, 3/202, 3/223, 5/00, 11/00, 11/11, 13/00, 15/00, 15/08, 17/00, 19/00, 21/00, 23/00, 25/00, 27/00, 27/12, 37/00, 37/02, 39/04, 41/00, 43/00, 45/00, 47/00, 49/00, 51/02, 55/00, 55/11, 55/115, 55/17, 55/24, 55/26, 57/06, 58/00

This Notice of Changes includes the following *[Check the ones included]*:

1. CLASSIFICATION SCHEME CHANGES

- A. New, Modified or Deleted Group(s)
- B. New, Modified or Deleted Warning(s)
- C. New, Modified or Deleted Note(s)
- D. New, Modified or Deleted Guidance Heading(s)

2. DEFINITIONS

- A. New or Modified Definitions (Full definition template)
- B. Modified or Deleted Definitions (Definitions Quick Fix)

3. REVISION CONCORDANCE LIST (RCL)

4. CHANGES TO THE CPC-TO-IPC CONCORDANCE LIST (CICL)

5. CHANGES TO THE CROSS-REFERENCE LIST (CRL)

CPC NOTICE OF CHANGES 581

DATE: JANUARY 1, 2019

PROJECT RP0544

1. CLASSIFICATION SCHEME CHANGES

A. New, Modified or Deleted Group(s)

SUBCLASS F16L - PIPES; JOINTS OR FITTINGS FOR PIPES; SUPPORTS FOR PIPES, CABLES OR PROTECTIVE TUBING; MEANS FOR THERMAL INSULATION IN GENERAL

<u>Type*</u>	<u>Symbol</u>	<u>Indent Level Number of dots (e.g. 0, 1, 2)</u>	<u>Title</u> “CPC only” text should normally be enclosed in {curly brackets}**	<u>Transferred to#</u>
M	F16L 1/00	0	Laying or reclaiming pipes; Repairing or joining pipes on or under water	
M	F16L 1/12	1	Laying or reclaiming pipes on or under water	
M	F16L 1/123	2	{Devices for the protection of pipes under water}	
M	F16L 1/20	2	Accessories therefor, e.g. floats, weights	
M	F16L 1/24	3	Floats; Weights	
M	F16L 1/26	1	Repairing or joining pipes on or under water	
M	F16L 3/01	1	for supporting or guiding the pipes, cables or protective tubing, between relatively movable points, e.g. movable channels	
M	F16L 3/015	2	using articulated- or supple-guiding elements	
M	F16L 3/04	2	and pressing it against a wall or other support	
M	F16L 5/00	0	Devices for use where pipes, cables or protective tubing pass through walls or partitions ({passing insulated pipes through walls F16L59/121;} arrangements for leading electric cables or lines through walls, floors or ceilings H02G3/22)	
M	F16L 9/00	0	Rigid pipes	
M	F16L 9/02	1	of metal (F16L9/16 - F16L9/22 take precedence)	
M	F16L 9/06	2	Corrugated pipes	
M	F16L 9/08	1	of concrete, cement, or asbestos cement, with or without reinforcement (F16L9/16 - F16L9/22 take precedence)	
M	F16L 9/16	1	wound from sheets or strips, with or without reinforcement	
M	F16L 9/18	1	Double-walled pipes; Multi-channel pipes or pipe assemblies	
M	F16L 11/00	0	Hoses, i.e. flexible pipes	
M	F16L 13/007	1	specially adapted for joining pipes of dissimilar materials {(joints between metal and plastic pipes F16L47/24)}	
M	F16L 13/02	1	Welded joints	

CPC NOTICE OF CHANGES 581

DATE: JANUARY 1, 2019

PROJECT RP0544

<u>Type*</u>	<u>Symbol</u>	<u>Indent Level Number of dots (e.g. 0, 1, 2)</u>	<u>Title</u> <u>“CPC only” text should normally be enclosed in { curly brackets }**</u>	<u>Transferred to#</u>
M	F16L 13/08	1	Soldered joints {(specially adapted for connecting metal hoses to rigid members F16L33/26)}	
M	F16L 13/14	1	made by plastically deforming the material of the pipe, e.g. by flanging, rolling	
M	F16L 15/00	0	Screw-threaded joints {(hose connections with parts screwed directly on or into the hose F16L33/24; joining pipes to wall F16L41/00)}; Forms of screw-threads for such joints	
M	F16L 17/00	0	Joints with packing adapted to sealing by fluid pressure ({for hoses F16L33/16} compensating devices F16L51/00)	
M	F16L 17/10	1	the packing being sealed by the pressure of a fluid other than the fluid in or surrounding the pipe	
M	F16L 21/00	0	Joints with sleeve or socket (F16L13/00, {F16L15/00,} F16L17/00, F16L19/00 {, F16L25/0027, F16L27/00, F16L37/00} take precedence {; specially adapted to be made of plastics or to be used with pipes made of plastics F16L47/06; specially adapted for pipes of brittle material F16L49/02})	
M	F16L 23/00	0	Flanged joints (F16L13/00, F16L17/00, F16L19/00 take precedence; adjustable joints F16L27/00; for hoses F16L33/00; couplings of the quick-acting type F16L37/00; for double-walled or multi-channel pipes or assemblies F16L39/00; connecting arrangements or other fittings specially adapted to be made of plastics or to be used with pipes made of plastics F16L 47/00; specially adapted for pipes of brittle material pipe F16L49/00)	
M	F16L 25/00	0	Constructive types of pipe joints not provided for in groups F16L13/00 - F16L23/00 (adjustable or allowing movement F16L 27/00; with fluid cut-off means F16L29/00; quick-acting F16L 37/00; for double-walled or multi-channel pipes F16L39/00; connecting arrangements or other fittings specially adapted to be made of plastics or to be used with pipes made of plastics F16L 47/00; specially adapted for pipes of brittle material F16L 49/00){; Details of pipe joints not otherwise provided for, e.g.	

CPC NOTICE OF CHANGES 581

DATE: JANUARY 1, 2019

PROJECT RP0544

<u>Type*</u>	<u>Symbol</u>	<u>Indent Level Number of dots (e.g. 0, 1, 2)</u>	<u>Title</u> <u>“CPC only” text should normally be enclosed in { curly brackets }**</u>	<u>Transferred to#</u>
			electrically conducting or insulating means }	
M	F16L25/01	1	specifically adapted for realising electrical conduction between the two pipe ends of the joint or between parts thereof	
M	F16L25/02	1	Electrically insulating joints or couplings	
M	F16L27/02	1	Universal joints, i.e. with mechanical connection allowing angular movement or adjustment of the axes of the parts in any direction	
M	F16L27/04	2	with partly spherical engaging surfaces	
M	F16L27/08	1	allowing adjustment or movement only about the axis of one pipe	
M	F16L29/00	0	Joints with fluid cut-off means (quick-acting joints with cut-off means F16L37/28)	
M	F16L29/02	1	with a cut-off device in one of the two pipe ends, the cut-off device being automatically opened when the coupling is applied	
M	F16L29/04	1	with a cut-off device in each of the two pipe ends, the cut-off devices being automatically opened when the coupling is applied	
M	F16L33/00	0	Arrangements for connecting hoses to rigid members; Rigid hose connectors, i.e. single members engaging both hoses	
M	F16L33/02	1	Hose-clips	
M	F16L37/084	2	combined with automatic locking	
M	F16L37/12	2	using hooks, pawls or other movable or insertable locking members (F16L37/084 takes precedence)	
M	F16L37/50	1	adjustable; allowing movement of the parts joined	
M	F16L39/04	1	allowing adjustment or movement {(of the multiline swivel type F16L39/06)}	
M	F16L41/00	0	Branching pipes; Joining pipes to walls (F16L39/00 takes precedence {; characterised by couplings of the quick-acting type F16L37/008; specially adapted to be made of plastics or to be used with pipes made of plastics F16L47/26 })	
M	F16L41/04	1	Tapping pipe walls, i.e. making connections through the walls of pipes while they are carrying fluids; Fittings therefor	

CPC NOTICE OF CHANGES 581

DATE: JANUARY 1, 2019

PROJECT RP0544

Type*	Symbol	Indent Level Number of dots (e.g. 0, 1, 2)	Title “CPC only” text should normally be enclosed in { curly brackets }**	Transferred to#
M	F16L41/082	2	{ Non-disconnectible joints, e.g. soldered, adhesive or caulked joints }	
M	F16L43/00	0	Bends; Siphons (with cleaning apertures F16L45/00)	
M	F16L47/00	0	Connecting arrangements or other fittings specially adapted to be made of plastics or to be used with pipes made of plastics {(connections for hoses of plastics F16L33/006)}	
M	F16L47/02	1	Welded joints; Adhesive joints	
M	F16L47/04	1	with a swivel nut or collar engaging the pipe	
M	F16L47/06	1	with sleeve or socket formed by or in the pipe end	
M	F16L47/22	2	using shrink-down material	
M	F16L49/00	0	Connecting arrangements, e.g. joints, specially adapted for pipes of brittle material, e.g. glass, earthenware	
M	F16L49/06	1	Joints in which sealing surfaces are pressed together by means of a member, e.g. swivel nut, screwed on, or into, one of the joint parts	
M	F16L49/08	1	Adjustable joints; Joints allowing movement	
M	F16L51/00	0	Expansion-compensation arrangements for pipe-lines (telescopic pipes F16L27/12)	
M	F16L51/02	1	making use of bellows or an expansible folded or corrugated tube	
M	F16L55/02	1	Energy absorbers; Noise absorbers (in valves F16K47/00)	
M	F16L55/027	2	Throttle passages	
M	F16L55/04	1	Devices damping pulsations or vibrations in fluids {(F16L55/02 takes precedence)}	
M	F16L55/05	3	Buffers therefor	
M	F16L55/07	1	Arrangement or mounting of devices, e.g. valves, for venting or aerating or draining (apparatus for draining F16T)	
M	F16L 55/09	1	Air conditioning, e.g. de-watering, in pneumatic systems	
M	F16L55/164	3	a sealing fluid being introduced in the pipe (F16L 55/1645 takes precedence)	
M	F16L55/165	3	a pipe {or flexible liner} being inserted in the damaged section	
M	F16L55/17	3	by means of rings, bands or sleeves pressed against the outside surface of the pipe or hose	

CPC NOTICE OF CHANGES 581

DATE: JANUARY 1, 2019

PROJECT RP0544

Type*	Symbol	Indent Level Number of dots (e.g. 0, 1, 2)	Title “CPC only” text should normally be enclosed in { curly brackets }**	Transferred to#
M	F16L55/179	2	specially adapted for bends, branch units, branching pipes or the like	
M	F16L55/18	1	Appliances for use in repairing pipes (F16L55/10 takes precedence)	
M	F16L55/24	1	Preventing accumulation of dirt or other matter in the pipes, e.g. by traps, by strainers	
M	F16L55/26	1	Pigs or moles, i.e. devices movable in a pipe or conduit with or without self-contained propulsion means	
M	F16L57/00	0	Protection of pipes or objects of similar shape against external or internal damage or wear ({protection under water F16L1/123; } supporting of pipes inside other pipes or sleeves F16L7/00; used in connection with end fittings of hoses F16L35/00; protection thereof during transport B65D59/00)	
M	F16L58/00	0	Protection of pipes or pipe fittings against corrosion or incrustation (compound tubes F16L9/14)	
M	F16L58/02	1	by means of internal or external coatings	
M	F16L58/04	2	Coatings characterised by the materials used (F16L58/16 takes precedence)	
M	F16L58/16	2	the coating being in the form of a bandage	
M	F16L58/18	1	specially adapted for pipe fittings	
M	F16L59/00	0	Thermal insulation in general	
M	F16L59/12	1	Arrangements for supporting insulation from the wall or body insulated, e.g. by means of spacers between pipe and heat-insulating material; Arrangements specially adapted for supporting insulated bodies	
M	F16L59/121	2	{for pipes passing through walls or partitions }	
M	F16L59/16	2	Arrangements specially adapted to local requirements at flanges, junctions, valves or the like	
M	F16L59/21	3	adapted for expansion-compensation devices	

*N = new entries where reclassification into entries is involved; C = entries with modified file scope where reclassification of documents from the entries is involved; Q = new entries which are firstly populated with documents via administrative transfers from deleted (D) entries. Afterwards, the transferred documents into the Q entry will either stay or be moved to more appropriate entries, as determined by intellectual reclassification; E= existing entries with enlarged file scope, which receive documents from C or D entries, e.g. when a limiting reference is removed from the entry title; M = entries with no change to the file scope (no

CPC NOTICE OF CHANGES 581

DATE: JANUARY 1, 2019

PROJECT RP0544

reclassification); D = deleted entries; F = frozen entries will be deleted once reclassification of documents from the entries is completed; U = entries that are unchanged.

NOTES:

- **No {curly brackets} are used for titles in CPC only subclasses, e.g. C12Y, A23Y; 2000 series symbol titles of groups found at the end of schemes (orthogonal codes); or the Y section titles. The {curly brackets} are used for 2000 series symbol titles found interspersed throughout the main trunk schemes (breakdown codes).
- U groups: it is obligatory to display the required “anchor” symbol (U group), i.e. the entry immediately preceding a new group or an array of new groups to be created (in case new groups are not clearly subgroups of C-type groups). Always include the symbol, indent level and title of the U group in the table above.
- All entry types should be included in the scheme changes table above for better understanding of the overall scheme change picture. Symbol, indent level, and title are required for all types.
- “Transferred to” column must be completed for all C, D, F, and Q type entries. F groups will be deleted once reclassification is completed.
- When multiple symbols are included in the “Transferred to” column, avoid using ranges of symbols in order to be as precise as possible.
- For administrative transfer of documents, the following text should be used: “<administrative transfer to XX>”, “<administrative transfer to XX and YY simultaneously>”, or “<administrative transfer to XX, YY, ...and ZZ simultaneously>” when administrative transfer of the same documents is to more than one place.
- Administrative transfer to main trunk groups is assumed to be the source allocation type, unless otherwise indicated.
- Administrative transfer to 2000/Y series groups is assumed to be “additional information”.
- If needed, instructions for allocation type should be indicated within the angle brackets using the abbreviations “ADD” or “INV”: <administrative transfer to XX ADD>, <administrative transfer to XX INV>, or <administrative transfer to XX ADD, YY INV, ... and ZZ ADD simultaneously>.
- In certain situations, the “D” entries of 2000-series or Y-series groups may not require a destination (“Transferred to”) symbol, however it is required to specify “<no transfer>” in the “Transferred to” column for such cases.
- For finalisation projects, the deleted “F” symbols should have <no transfer> in the “Transferred to” column.
- For more details about the types of scheme change, see CPC Guide.

CPC NOTICE OF CHANGES 581

DATE: JANUARY 1, 2019

PROJECT RP0544

B. New, Modified or Deleted Warning(s)

SUBCLASS F16L - PIPES; JOINTS OR FITTINGS FOR PIPES; SUPPORTS FOR PIPES, CABLES OR PROTECTIVE TUBING; MEANS FOR THERMAL INSULATION IN GENERAL

<u>Type*</u>	<u>Location</u>	<u>Old Warning</u>	<u>New/Modified Warning</u>
M	F16L	In this subclass non-limiting references (in the sense of paragraph 39 of the Guide to the IPC) may still be displayed in the scheme.	{ In this subclass non-limiting references (in the sense of paragraph 39 of the Guide to the IPC) may still be displayed in the scheme. }

*N = new warning, M = modified warning, D = deleted warning

NOTE: The "Location" column only requires the symbol PRIOR to the location of the warning. No further directions such as "before" or "after" are required.

CPC NOTICE OF CHANGES 581

DATE: JANUARY 1, 2019

PROJECT RP0544

C. New, Modified or Deleted Note(s)

SUBCLASS F16L - PIPES; JOINTS OR FITTINGS FOR PIPES; SUPPORTS FOR PIPES, CABLES OR PROTECTIVE TUBING; MEANS FOR THERMAL INSULATION IN GENERAL

<u>Type*</u>	<u>Location</u>	<u>Old Note</u>	<u>New/Modified Note</u>
D	F16L55/265	<p>1. Pigs or moles specially adapted for particular applications are classified in the relevant places for the applications, e.g.</p> <ul style="list-style-type: none"> • stopping flow from or in pipes or hoses F16L55/12 • repairing pipes F16L55/18 • applying liquids or other fluent materials to the inside of tubes B05C7/08 • cleaning pipes or tubes or systems of pipes or tubes B08B9/02 • welding or cutting B23K37/02 • earth drilling E21B • {separating products F17D3/08;} • cleaning chimneys F23J3/02 • cleaning internal or external surfaces of heat-exchange or heat-transfer conduits F28G • measuring, testing G01 • inspection of vessels in nuclear reactors G21C17/003 • inspection or maintenance of pipe-lines or tubes in nuclear installations G21C17/017 <p>installing electric, or combined optical and electric, cables or lines H02G</p>	Delete Note 1.
N	F16L55/26		<p>Insert Note 1:</p> <p>Pigs or moles specially adapted for particular applications are classified in the relevant places for the applications, e.g.</p> <ul style="list-style-type: none"> • stopping flow from or in pipes or hoses F16L55/12 • repairing pipes F16L55/18

CPC NOTICE OF CHANGES 581

DATE: JANUARY 1, 2019

PROJECT RP0544

<u>Type*</u>	<u>Location</u>	<u>Old Note</u>	<u>New/Modified Note</u>
			<ul style="list-style-type: none"> • applying liquids or other fluent materials to the inside of tubes B05C 7/08 • cleaning pipes or tubes or systems of pipes or tubes B08B 9/02 • welding or cutting B23K 37/02 • earth drilling E21B • {separating products F17D 3/08;} • cleaning chimneys F23J 3/02 • cleaning internal or external surfaces of heat-exchange or heat-transfer conduits F28G • measuring, testing G01 • inspection of vessels in nuclear reactors G21C 17/003 • inspection or maintenance of pipe-lines or tubes in nuclear installations G21C 17/017 installing electric, or combined optical and electric, cables or lines H02G
D	F16L55/265	In groups F16L55/26 - F16L55/48, the indexing codes of F16L2101/00 - F16L2101/70 are added	Delete.
N	F16L55/26		Insert as Note(2): In this group, it is desirable to add the indexing codes of group F16L 2101/00.

*N = new note, M = modified note, D = deleted note

NOTE: The "Location" column only requires the symbol PRIOR to the location of the note. No further directions such as "before" or "after" are required.

DATE: JANUARY 1, 2019

PROJECT RP0544

2. A. DEFINITIONS (new)

Insert: The following new Definitions.

F16L 1/12

References

Informative references

Attention is drawn to the following places, which may be of interest for search:

Buoyant hoses	F16L 11/133
---------------	-----------------------------

F16L 1/20

References

Informative references

Attention is drawn to the following places, which may be of interest for search:

Buoys	B63B 22/00
-------	----------------------------

F16L 1/24

References

Informative references

Attention is drawn to the following places, which may be of interest for search:

Salvaging sunken vessels or underwater object	B63C 7/00
Floats per se	B63B 22/00

DATE: JANUARY 1, 2019

PROJECT RP0544

F16L 1/26**References****Informative references***Attention is drawn to the following places, which may be of interest for search:*

Buoyant hoses	F16L 11/133
Joints per se	F16L 13/00 – F16L 49/00
Joining pipes to underwater installations	E21B

F16L 3/01**References****Informative references***Attention is drawn to the following places, which may be of interest for search:*

Hauling- or hoisting-chains with arrangements for holding electric cables, hoses or the like	F16G 13/16
--	----------------------------

F16L 3/015**References****Informative references***Attention is drawn to the following places, which may be of interest for search:*

Cranes with means for transmitting pneumatic, hydraulic or electric power to movable parts or devices	B66C 13/12
---	----------------------------

DATE: JANUARY 1, 2019

PROJECT RP0544

F16L 3/04**References****Informative references***Attention is drawn to the following places, which may be of interest for search:*

Staples	F16B 15/00
---------	----------------------------

F16L 9/02**References****Limiting references***This place does not cover:*

Rigid pipes wound from sheets or strips, with or without reinforcement	F16L 9/16
Rigid pipes obtained by bending a sheet longitudinally and connecting the edges	F16L 9/17
Double-walled pipes; Multi-channel pipes or pipe assemblies	F16L 9/18
Rigid pipes made of sound-absorbing materials or with sound-absorbing structure	F16L 9/21
Rigid pipes composed of a plurality of segments	F16L 9/22

Informative references*Attention is drawn to the following places, which may be of interest for search:*

Finned pipes	F28F
--------------	----------------------

DATE: JANUARY 1, 2019

PROJECT RP0544

F16L 9/06**References****Informative references***Attention is drawn to the following places, which may be of interest for search:*

Corrugated flexible pipes	F16L 11/15
---------------------------	----------------------------

F16L 9/08**References****Limiting references***This place does not cover:*

Rigid pipes wound from sheets or strips, with or without reinforcement	F16L 9/16
Rigid pipes obtained by bending a sheet longitudinally and connecting the edges	F16L 9/17
Double-walled pipes; Multi-channel pipes or pipe assemblies	F16L 9/18
Rigid pipes made of sound-absorbing materials or with sound-absorbing structure	F16L 9/21
Rigid pipes composed of a plurality of segments	F16L 9/22

Informative references*Attention is drawn to the following places, which may be of interest for search:*

Shaping clay or other ceramic compositions, slag or mixtures containing cementitious material	B28B
---	----------------------

DATE: JANUARY 1, 2019

PROJECT RP0544

F16L 9/16

References

Informative references

Attention is drawn to the following places, which may be of interest for search:

Making wound paper articles	B31C
-----------------------------	------

F16L 9/18

References

Informative references

Attention is drawn to the following places, which may be of interest for search:

Joints therefor	F16L 39/00
-----------------	------------

F16L 13/007

References

Limiting references

This place does not cover:

Joints between metal and plastic pipes	F16L 47/24
--	------------

Informative references

Attention is drawn to the following places, which may be of interest for search:

Disconnectible joints for pipes of dissimilar materials	F16L 25/0072
---	--------------

DATE: JANUARY 1, 2019

PROJECT RP0544

F16L 13/02

References

Informative references

Attention is drawn to the following places, which may be of interest for search:

Arc welding of curved planar seams	B23K 9/028
------------------------------------	----------------------------

F16L 13/08

References

Limiting references

This place does not cover:

Joints specially adapted for connecting metal hoses to rigid members	F16L 33/26
--	----------------------------

Informative references

Attention is drawn to the following places, which may be of interest for search:

Soldering metal	B23K 1/00
-----------------	---------------------------

F16L 13/14

References

Informative references

Attention is drawn to the following places, which may be of interest for search:

Working of metal tubes without essentially removing material	B21D
--	----------------------

DATE: JANUARY 1, 2019

PROJECT RP0544

F16L 17/10

References

Informative references

Attention is drawn to the following places, which may be of interest for search:

Expansion-compensation arrangements for pipe-lines	F16L 51/00
--	----------------------------

F16L 25/01

References

Informative references

Attention is drawn to the following places, which may be of interest for search:

Electrically-conductive connections between or with tubular conductors	F16L 47/00
--	----------------------------

F16L 25/02

References

Informative references

Attention is drawn to the following places, which may be of interest for search:

Insulating bodies in general	H01B
------------------------------	----------------------

DATE: JANUARY 1, 2019

PROJECT RP0544

F16L 27/02

References

Informative references

Attention is drawn to the following places, which may be of interest for search:

Articulated hoses made of rigid material	F16L 11/18
--	----------------------------

F16L 27/04

References

Informative references

Attention is drawn to the following places, which may be of interest for search:

Joints with, between the surfaces, a flexible element which undergoes shear and flexure	F16L 27/103
---	-----------------------------

F16L 27/08

References

Informative references

Attention is drawn to the following places, which may be of interest for search:

Swivel joints in hose lines for flushing boreholes	E21B 21/02
--	----------------------------

DATE: JANUARY 1, 2019

PROJECT RP0544

F16L 29/02

References

Informative references

Attention is drawn to the following places, which may be of interest for search:

Screw joints without cut-off devices	F16L 19/00
--------------------------------------	----------------------------

F16L 29/04

References

Informative references

Attention is drawn to the following places, which may be of interest for search:

Screw joints without cut-off devices	F16L 19/00
--------------------------------------	----------------------------

F16L 33/02

References

Informative references

Attention is drawn to the following places, which may be of interest for search:

Covering leaks in pipes or hoses	F16L 55/16
----------------------------------	----------------------------

DATE: JANUARY 1, 2019

PROJECT RP0544

F16L 37/50

References

Informative references

Attention is drawn to the following places, which may be of interest for search:

Adjustable joints in general	F16L 27/00
Joints for double-walled or multi-channel pipes or pipe assemblies	F16L 37/56

F16L 41/082

References

Informative references

Attention is drawn to the following places, which may be of interest for search:

Non-disconnectible pipe joints in general	F16L 13/00
---	----------------------------

F16L 47/02

References

Informative references

Attention is drawn to the following places, which may be of interest for search:

Non-disconnectible pipe-joints in general	F16L 13/00
---	----------------------------

DATE: JANUARY 1, 2019

PROJECT RP0544

F16L 47/04

References

Informative references

Attention is drawn to the following places, which may be of interest for search:

Joints in which sealing surfaces are pressed together by means of a member screwed on or into one of the joint parts, in general	F16L 19/00
--	----------------------------

F16L 47/06

References

Informative references

Attention is drawn to the following places, which may be of interest for search:

Joints with sleeves or socket, in general	F16L 21/00
---	----------------------------

F16L 47/22

References

Informative references

Attention is drawn to the following places, which may be of interest for search:

In other than plastics	F16L 13/004
------------------------	-----------------------------

DATE: JANUARY 1, 2019

PROJECT RP0544

F16L 49/06**References****Informative references***Attention is drawn to the following places, which may be of interest for search:*

Joints in which sealing surfaces are pressed together by means of a member screwed on or into one of the joint parts, in general	F16L 19/00
--	----------------------------

F16L 49/08**References****Informative references***Attention is drawn to the following places, which may be of interest for search:*

Adjustable joints, in general	F16L 27/00
-------------------------------	----------------------------

F16L 55/02**References****Limiting references***This place does not cover:*

Means in valves for absorbing fluid energy	F16K 47/00
--	----------------------------

Informative references*Attention is drawn to the following places, which may be of interest for search:*

Springs, shock absorbers, means for damping vibration in general	F16F
--	----------------------

DATE: JANUARY 1, 2019

PROJECT RP0544

F16L 55/027**References****Informative references***Attention is drawn to the following places, which may be of interest for search:*

Influencing flow of fluids	F15D 1/00
Control of fluid flow	G05D 7/00

F16L 55/04**References****Limiting references***This place does not cover:*

Energy absorbers; Noise absorbers	F16L 55/02
-----------------------------------	------------

Informative references*Attention is drawn to the following places, which may be of interest for search:*

Counter-acting cavitation in pumps	F04B 39/00
Springs, shock absorbers, means for damping vibration in general	F16F
Means in valves for absorbing fluid energy	F16K 47/00

F16L 55/05**References****Informative references***Attention is drawn to the following places, which may be of interest for search:*

Accumulators	F15B 1/04
--------------	-----------

DATE: JANUARY 1, 2019

PROJECT RP0544

F16L 55/07**References****Limiting references***This place does not cover:*

Apparatus for draining	F16T
------------------------	----------------------

Informative references*Attention is drawn to the following places, which may be of interest for search:*

Arrangement of draining devices in water supply systems	E03B 7/08
Venting or aerating devices per se	F16K 24/00

F16L 55/09**References****Informative references***Attention is drawn to the following places, which may be of interest for search:*

Air conditioning in general	F24F
-----------------------------	----------------------

F16L 55/165**References****Informative references***Attention is drawn to the following places, which may be of interest for search:*

Protection against corrosion	F16L 58/10
------------------------------	----------------------------

DATE: JANUARY 1, 2019

PROJECT RP0544

F16L 55/179**References****Informative references***Attention is drawn to the following places, which may be of interest for search:*

Pigs or moles specially adapted to work at or near a junction between a main and a lateral pipe	F16L 55/265
---	-----------------------------

F16L 55/18**References****Limiting references***This place does not cover:*

Means for stopping flow from or in pipes or hoses	F16L 55/10
---	----------------------------

Informative references*Attention is drawn to the following places, which may be of interest for search:*

Pigs or moles for pipes, in general	F16L 55/26
-------------------------------------	----------------------------

F16L 58/02**References****Informative references***Attention is drawn to the following places, which may be of interest for search:*

Coatings for thermal insulation	F16L 59/00
Methods or machines for applying coatings	B28B 11/04 , B28B 21/94

DATE: JANUARY 1, 2019

PROJECT RP0544

F16L 58/04**References****Limiting references***This place does not cover:*

Coatings in the form of a bandage	F16L 58/16
-----------------------------------	----------------------------

Informative references*Attention is drawn to the following places, which may be of interest for search:*

Compositions of coatings	C04B
--------------------------	----------------------

F16L 58/16**References****Informative references***Attention is drawn to the following places, which may be of interest for search:*

Apparatus for covering cores by winding	B65H 81/00
---	----------------------------

F16L 58/18**References****Informative references***Attention is drawn to the following places, which may be of interest for search:*

Non-disconnectible joints of coated pipes	F16L 13/0254
Screw joints for coated pipes comprising pipes with collars or flanges	F16L 19/0243

DATE: JANUARY 1, 2019

PROJECT RP0544

F16L 59/12

References

Informative references

Attention is drawn to the following places, which may be of interest for search:

Pipe supports allowing movement in axial direction	F16L 3/18
--	---------------------------

F16L 59/121

References

Informative references

Attention is drawn to the following places, which may be of interest for search:

Devices for use where pipes, cables or protective tubing pass through walls or partition in general	F16L 5/00
---	---------------------------

F16L 59/16

References

Informative references

Attention is drawn to the following places, which may be of interest for search:

Means in or on valves for heating or cooling	F16K 49/00
--	----------------------------

DATE: JANUARY 1, 2019

PROJECT RP0544

F16L 59/21

References

Informative references

Attention is drawn to the following places, which may be of interest for search:

Expansion-compensation arrangements for pie-lines	F16L 51/00
---	----------------------------

DATE: JANUARY 1, 2019

PROJECT RP0544

2. A. DEFINITIONS (modified)

F16L

References

Delete: The entire Limiting references section.

Delete: The existing Informative references table.

Insert: The following new Informative references table.

Informative references

Attention is drawn to the following places, which may be of interest for search:

Watering gardens, fields, sports grounds, or the like, e.g. perforated pipe-lines	A01G 25/00
Vacuum cleaners, e.g. corrugated hoses; leaning machines, e.g. hose connections combined with electrical contacts, steam hoses with cables for steam ironing	A47L
Connectors in the medical field, e.g. catheters	A61M
Fire fighting; fire fighting hoses; sprinkler systems	A62C
Micro/macro connectors, e.g. for lab on chip	B01L
Sprayers	B05B
Cleaning of pipes	B08B
Air conditioning ducts in vehicles	B60H
Fuel conduits in vehicles, connections to LPG tank	B60K 15/00
Fixing of hoses or cables in motors vehicles	B60R
Arrangement of piping or air hoses for brake systems	B60T 17/04
Pipe laying ships	B63B
Containers/bags/vessels/tanks Connections to containers in general; Closing straps	B65D

CPC NOTICE OF CHANGES 581

DATE: JANUARY 1, 2019

PROJECT RP0544

Bends for conveying concrete	B65G
Wear protection for bends for conveying concrete	B65G 53/52
LPG couplings/filling nozzles/ Transferring fluids, e.g. fuel from bulk to vehicles or portable containers	B67D
Dispensing fluids, e.g. filling bottles or cans	B67D 1/00
Fastening of pipes or cables to bridges	E01D 19/00
Couplings for dredgers	E02F 3/3609
Domestic plumbing: shower hoses; toilet installations; drainage; Sewage	E03C, E03D, E02B, E03F
Downpipes for roof drainage, fixing means therefore	E04D
Vertical ducts, channels in buildings, e.g. chimneys	E04F
Fluid concrete transport	E04G
Air ducts for ventilation of mines or tunnels, connections therefore	E21F1/04
Suspension devices for tubes or the like in mines or tunnels	E21F 17/00
Exhaust pipes	F01N
Air intake in motor engines, e.g. ducts between motor and filter	F02M
Fixing devices, e.g. hollow screws	F16B
Valves	F16K
Conduits, junctions for lubrication systems	F16N 21/00
Connections to gas tanks	F17C
Pipelines/pipe systems	F17D
Water tubes of steam boilers	F22B 37/00
Joints, connection for chimneys or flues	F23J 13/00
Hot water systems, central heating, e.g. distributors for heating built up from modules	F24D
Ducting arrangements for air-conditioning	F24F 13/02
Heat exchangers	F28D

DATE: JANUARY 1, 2019

PROJECT RP0544

Sealing elements into header boxes or end plates of heat-exchangers	F28F 9/00
Pipes in nuclear reactors	G21C 15/00
Installation of electric cables, e.g. cable or pipe binders, cable or pipe channels	H02G

Delete: The existing Special rules of classification section.

Insert: The following new Special rules of classification section.

Special rules of classification

- Classification is not allocated when the features in the document concerning this subclass are obviously of no technical value, or a mere reference (e.g. if in a document it is mentioned that the connection can be also made by gluing, welding, screwing... without a further relevant technical information)
- Documents mainly concerning the material of the pipe or hose are classified in main groups F16L 9/00 or F16L 11/00
- There is a horizontal indexing scheme for further details not related to a specific CPC group:

Uses or applications of pigs or moles F16L 2101/00

Special arrangements for pipe couplings F16L 2201/00

DATE: JANUARY 1, 2019

PROJECT RP0544

F16L 1/00**References**

Delete: The entire Limiting references section.

Delete: The existing Informative references table.

Insert: The following new Informative references table.

Informative references

Attention is drawn to the following places, which may be of interest for search:

Soldering or welding	B23K
Pipe laying ships	B63B
Lifting-gear and load-engaging elements	B66
Hydraulic installations, soil drainage	E02B
Excavations or underwater constructions	E02D
Machines for digging trenches in combination with pipe-assembly	E02F
Tunneling	E21D
Lining of pipes, replacement of damaged part of a pipe, replacing an existing pipe with a new pipe, wherein the old pipe is being ruptured	F16L 55/16
Laying electric, or combined optical and electric, cables	H02G

DATE: JANUARY 1, 2019

PROJECT RP0544

F16L 1/123Insert: The following new Informative references section.**References****Informative references***Attention is drawn to the following places, which may be of interest for search:*

Protection of pipes in general	F16L 57/00
--------------------------------	----------------------------

F16L 3/00**References**Delete: The existing Limiting references table.Insert: The following new Limiting references table.**Limiting references***This place does not cover:*

Anchors for holding pipes on or under the ground	F16L 1/06
Sound-damping supports	F16L 55/035
Supports for insulated pipes	F16L 59/135

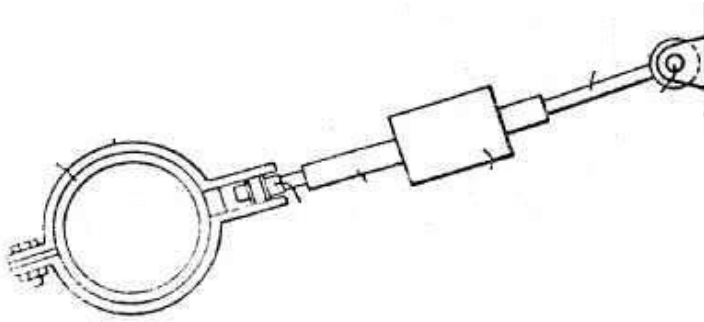
Delete: The entire Application-oriented references section.Delete: The existing Informative references table.Insert: The following new Informative references table.**Informative references***Attention is drawn to the following places, which may be of interest for search:*

Compositions of coatings	C04B
--------------------------	----------------------

F16L 3/202

Definition statement

Replace: The existing figure with the following.



Insert: The following new Limiting references section.

Limiting references

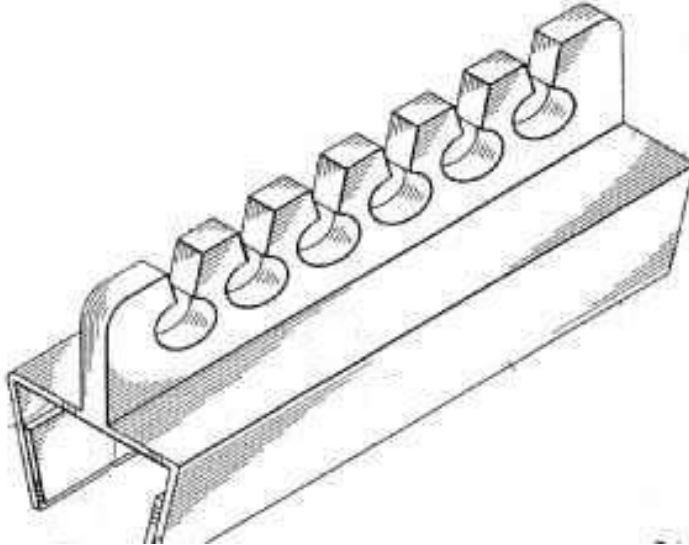
This place does not cover:

Movement of the pipes being hydraulically or electrically controlled	F16L 3/215
--	------------

F16L 3/223

Definition statement

Replace: The existing figure with the following.



Insert: The following new Limiting references section.

Limiting references

This place does not cover:

Supports for a bundle of pipes or a plurality of pipes placed side by side in contact with each other	F16L 3/23
Supports for two pipes only	F16L 3/237

DATE: JANUARY 1, 2019

PROJECT RP0544

F16L 5/00**References**

Delete: The following two references from the Limiting references table.

Limiting references

This place does not cover:

Joining pipes to walls	F16L 41/00
Joining plastic pipes to walls	F16L 47/26

Delete: The existing Informative references table.

Insert: The following new Informative references table.

Informative references

Attention is drawn to the following places, which may be of interest for search:

Sealing elements into header boxes or end plates of heat-exchangers	F28F 9/00
Joining pipes to walls	F16L 41/00
Joining plastic pipes to walls	F16L 47/26

F16L 11/00

Delete: The entire Limiting references section.

Insert: The following new Informative references section.

References**Informative references**

Attention is drawn to the following places, which may be of interest for search:

Hose-like supports for pipes, cables or protective tubing, between relatively movable points	F16L 3/01
--	---------------------------

DATE: JANUARY 1, 2019

PROJECT RP0544

F16L 11/11

References

Insert: The following new Limiting references section.

Limiting references

This place does not cover:

Corrugated hoses wound from strips or bands	F16L 11/24
---	----------------------------

F16L 13/00

References

Add: The following new reference to the Limiting references table.

Limiting references

This place does not cover:

Non-disconnectible joints for rigid pipes of plastics	F16L 47/00
---	----------------------------

Delete: The entire Application-oriented references section.

DATE: JANUARY 1, 2019

PROJECT RP0544

F16L 15/00

References

Delete: The following reference from the Limiting references table.

Limiting references

This place does not cover:

Screw threaded connections for drilling rods (drill hammer)	E21B 17/042
---	-----------------------------

Add: The following new reference to the Application-oriented references table.

Application-oriented references

Examples of places where the subject matter of this place is covered when specially adapted, used for a particular purpose, or incorporated in a larger system:

Screw threaded connections for drilling rods (drill hammer)	E21B 17/042
---	-----------------------------

Delete: The existing Informative references table.

Insert: The following new Informative references table.

Informative references

Attention is drawn to the following places, which may be of interest for search:

Lubricating compositions	C10M
--------------------------	----------------------

DATE: JANUARY 1, 2019

PROJECT RP0544

F16L 15/08**References**Insert: The following new Limiting references section.**Limiting references***This place does not cover:*

Screw-threaded joints with additional sealings	F16L 15/04
Branching pipes; Joining pipes to walls	F16L 41/00
Bends or siphons adapted to make use of special securing means	F16L 43/02

F16L 17/00**References**Insert: The following new Limiting references section.**Limiting references***This place does not cover:*

Sealing by fluid pressure for hoses	F16L 33/16
Compensating devices	F16L 51/00

Replace: The first row of the Informative references table, “For universal joints...” with the following.**Informative references***Attention is drawn to the following places, which may be of interest for search:*

Sealing by fluid pressure for universal joints with partly spherical engaging surfaces	F16L 27/067
--	-----------------------------

DATE: JANUARY 1, 2019

PROJECT RP0544

Delete: The following reference from the Informative references table.

Informative references

Attention is drawn to the following places, which may be of interest for search:

Compensating devices	F16L 51/00
----------------------	----------------------------

F16L 19/00

References

Delete: The existing Limiting references table.

Insert: The following new Limiting references table.

Limiting references

This place does not cover:

Screw threaded joints	F16L 15/00
Joints with packing adapted to sealing by fluid pressure	F16L 17/00
Flanged joints with sealing surfaces pressed together by bolts or equivalent connecting means	F16L 23/00
Electrically insulating joints	F16L 25/02
Adjustable joints, joints allowing movement	F16L 27/00
Specially adapted for pipes of brittle material	F16L 49/06

Delete: The entire Application-oriented references section.

Delete: The entire Informative references section.

DATE: JANUARY 1, 2019

PROJECT RP0544

Insert: The following new Special rules of classification section.

Special rules of classification

Looping references between F16L 19/00 and F16L 23/00 have been identified. Until this inconsistency is resolved, the current classification practice in CPC is as follows:

Flanged joints with sealing surfaces pressed together by means other than bolts or equivalent are classified only in F16L 19/00.

Flanged joints with sealing surfaces pressed together by bolts or equivalent are classified only in F16L 23/00.

F16L 21/00

References

Add: The following two new references to the Limiting references table.

Limiting references

This place does not cover:

Joins with sleeve and socket specially adapted to be used with pipes of plastic	F16L 47/06
Joins with sleeve and socket specially adapted to be used with pipes of brittle material	F16L 49/02

Delete: The entire Application-oriented references section.

DATE: JANUARY 1, 2019

PROJECT RP0544

F16L 23/00**References**Delete: The existing Limiting references table.Insert: The following new Limiting references table.**Limiting references***This place does not cover:*

Non-disconnectable pipe joints	F16L 13/00
Joints adapted to sealing by fluid pressure	F16L 17/00
Flanged joints with sealing surfaces pressed together by means other than bolts or equivalent	F16L 19/00
Adjustable joints	F16L 27/00
For hoses	F16L 33/00
Couplings of the quick-acting type	F16L 37/00
For double-walled or multi-channel pipes or assemblies	F16L 39/00
Connecting arrangements or other fittings specially adapted to be made of plastics or to be used with pipes made of plastics	F16L 47/00
Specially adapted for pipes of brittle material	F16L 49/00

Delete: The entire Application-oriented references section.

DATE: JANUARY 1, 2019

PROJECT RP0544

Insert: The following new Special rules of classification section.

Special rules of classification

Looping references between F16L 19/00 and F16L 23/00 have been identified. Until this inconsistency is resolved, the current classification practice in CPC is as follows:

Flanged joints with sealing surfaces pressed together by means other than bolts or equivalent are classified only in F16L 19/00.

Flanged joints with sealing surfaces pressed together by bolts or equivalent are classified only in F16L 23/00.

F16L 25/00

References

Delete: The existing Limiting references table.

Insert: The following new Limiting references table.

Limiting references

This place does not cover:

Adjustable joints	F16L 27/00
Joints with fluid cut-off means	F16L 29/00
Couplings of the quick-acting type	F16L 37/00
Joints or fittings for double-walled or multi-channel pipes or pipe assemblies	F16L 39/00
Specially adapted to be made of plastics or to be used with pipes made of plastics	F16L 47/00
Specially adapted for pipes of brittle material	F16L 49/00

DATE: JANUARY 1, 2019

PROJECT RP0544

Insert: The following new section References out of a residual place.

References out of a residual place

Examples of places in relation to which this place is residual:

Non-disconnectable pipe joints	F16L 13/00
Screw-threaded joints	F16L 15/00
Joints adapted to sealing by fluid pressure	F16L 17/00
Joints in which sealing surfaces are pressed together by means of a member, e.g. swivel nut	F16L 19/00
Joints with sleeve or socket	F16L 21/00
Flanged joints	F16L 23/00

Delete: The entire Application-oriented references section.

F16L 27/00

References

Delete: The existing Limiting references table.

Insert: The following new Limiting references table.

Limiting references

This place does not cover:

Couplings of the quick-acting type	F16L 37/50
For double-walled or multi-channel pipes or assemblies	F16L 39/04
Connecting arrangements or other fittings specially adapted to be made of plastics or to be used with pipes made of plastics	F16L 47/00
Specially adapted to be used with pipes of brittle material	F16L 49/00

DATE: JANUARY 1, 2019

PROJECT RP0544

Delete: The following two lines from the Application-oriented references table.

Application-oriented references

Examples of places where the subject matter of this place is covered when specially adapted, used for a particular purpose, or incorporated in a larger system:

Connecting arrangements or other fittings specially adapted to be made of plastics or to be used with pipes made of plastics	F16L 47/00
Specially adapted to be used with pipes of brittle material	F16L 49/00

Insert: The following new Informative references section.

Informative references

Attention is drawn to the following places, which may be of interest for search:

Branching pipes, wherein the branch pipes are moveable	F16L 41/18
--	------------

F16L 27/12

References

Delete: The existing Limiting references table.

Insert: The following new Limiting references table.

Limiting references

This place does not cover:

Joint allowing movement by use of screw-threads	F16L 15/02
---	------------

DATE: JANUARY 1, 2019

PROJECT RP0544

Insert: The following new Informative references section.

Informative references

Attention is drawn to the following places, which may be of interest for search:

Telescopic bends	F16L 43/006
------------------	-----------------------------

F16L 37/00

References

Delete: The existing Limiting references table.

Insert: The following new Limiting references table.

Limiting references

This place does not cover:

Radially binding sleeves	F16L 17/04 , F16L 21/06
Connecting hoses to rigid members	F16L 33/00
Connections made automatically when vehicles are brought together	B60D , B61G
Specially adapted for lubricating devices	F16N 21/00

Delete: The following two references from the Application-oriented references table.

Application-oriented references

Examples of places where the subject matter of this place is covered when specially adapted, used for a particular purpose, or incorporated in a larger system:

Connections made automatically when vehicles are brought together	B60D , B61G
Specially adapted for lubricating devices	F16N 21/00

DATE: JANUARY 1, 2019

PROJECT RP0544

Insert: The following new Informative references section.

Informative references

Attention is drawn to the following places, which may be of interest for search:

Welded connections or screwed connections	F16L 13/00, F16L 15/00
---	---------------------------

F16L 37/02

References

Insert: The following new Limiting references table.

Limiting references

This place does not cover:

Connections maintained by means of balls, rollers or helical springs under radial pressure between the parts	F16L 37/22
--	------------

F16L 39/04

References

Insert: The following new Limiting references table.

Limiting references

This place does not cover:

Joints of the multiple swivel type	F16L 39/06
------------------------------------	------------

Insert: The following new Informative references section.

Informative references

Attention is drawn to the following places, which may be of interest for search:

Joints allowing adjustment or movement in general	F16L 27/00
---	------------

DATE: JANUARY 1, 2019

PROJECT RP0544

F16L 41/00**References**Delete: The existing Limiting references table.Insert: The following new Limiting references table.**Limiting references***This place does not cover:*

The branch pipe being joint to the main pipe or the wall by a coupling of the quick acting type	F16L 37/008
Joints or fittings for double-walled or multi-channel pipes or pipe assemblies	F16L 39/00
Specially adapted to be made of plastics or to be used with pipes made of plastics	F16L 47/26

Delete: The following reference from the Application-oriented references table.**Application-oriented references***Examples of places where the subject matter of this place is covered when specially adapted, used for a particular purpose, or incorporated in a larger system:*

Specially adapted to be made of plastics or to be used with pipes made of plastics	F16L 47/26
--	------------

Add: The following new reference to the Informative references table.**Informative references***Attention is drawn to the following places, which may be of interest for search:*

Pipes passing through walls	F16L 5/00
-----------------------------	-----------

DATE: JANUARY 1, 2019

PROJECT RP0544

F16L 43/00

References

Delete: The following reference from the Limiting references table.

Limiting references

This place does not cover:

Expansion-compensation arrangements making use of bends	F16L 51/04
---	----------------------------

Add: The following new reference to the Application-oriented references table.

Application-oriented references

Examples of places where the subject matter of this place is covered when specially adapted, used for a particular purpose, or incorporated in a larger system:

Expansion-compensation arrangements making use of bends	F16L 51/04
---	----------------------------

F16L 45/00

References

Delete: The entire Limiting references section.

Add: The following new reference to the Informative references table.

Informative references

Attention is drawn to the following places, which may be of interest for search:

Means for stopping flow from or in pipes or hoses	F16L 55/10
---	----------------------------

DATE: JANUARY 1, 2019

PROJECT RP0544

F16L 47/00

Replace: The term “therefore” with the spelling “therefor” in the section Relationships with other classification places.

Relationships with other classification places

Not covered are fitting made of plastic or which are used with plastic pipes, but are not specially adapted therefor, e.g. if they could be made of any other material without any adaptations. These fittings are classified in the general groups for the respective connections.

Add: The following new reference to the Informative references table.

Informative references

Attention is drawn to the following places, which may be of interest for search:

Bends or siphons	F16L 43/008
------------------	-------------

F16L 49/00

Replace: The term “therefore” with the spelling “therefor” in the section Relationships with other classification places.

Relationships with other classification places

Not covered are joints of pipes of brittle material when the connection is not specially adapted therefor, e.g. if they could be made of any other material without any adaptations. These fittings are classified in the general groups for the respective connections.

DATE: JANUARY 1, 2019

PROJECT RP0544

References

Delete: The entire Limiting references section.

Insert: The following new Informative references section.

Informative references

Attention is drawn to the following places, which may be of interest for search:

Sleeves, nipples of reduction pieces made of elastic material	F16L 21/005
---	-----------------------------

F16L 51/02

References

Delete: The entire Limiting references section.

Insert: The following new Application-oriented references section.

Application-oriented references

Examples of places where the subject matter of this place is covered when specially adapted, used for a particular purpose, or incorporated in a larger system:

Bellows that are intended to provide adjustment or movement to the coupling	F16L 27/107
---	-----------------------------

Insert: The following new Informative references section.

Informative references

Attention is drawn to the following places, which may be of interest for search:

Rigid corrugated pipes	F16L 9/06
Corrugated hoses made of rigid material	F16L 11/15

DATE: JANUARY 1, 2019

PROJECT RP0544

F16L 55/00

Replace: The existing Definition statement with the following.

Definition statement

Devices for use in, or in connection with pipes or pipe systems that are not covered by groups F16L 1/00 – F16L 53/00, F16L 57/00, F16L 59/00, e.g. damping devices, means for stopping flow, devices for covering leaks, pigs or moles, preventing accumulation of dirt.

References

Delete: The following reference from the Limiting references table.

Limiting references

This place does not cover:

Steam traps for draining of liquids from enclosure containing gases or vapours	F16T
--	------

Replace: The third row of the Application-oriented references table, “For domestic...” with the following.

Application-oriented references

Examples of places where the subject matter of this place is covered when specially adapted, used for a particular purpose, or incorporated in a larger system:

Devices for domestic plumbing installations	E03C 1/00
---	-----------

F16L 55/11

Replace: The existing Definition statement with the following.

Definition statement

Closing means which can be fixed inside the pipe end

References

Insert: The following new Limiting references section.

Limiting references

This place does not cover:

In situ expandable members introduced axially into pipes or hoses	F16L 55/128
---	-----------------------------

F16L 55/115

Replace: The existing Definition statement with the following.

Definition statement

Closing means which can be fixed on the outside of the pipe end

References

Insert: The following new Limiting references section.

Limiting references

This place does not cover:

In situ expandable caps introduced axially into pipes or hoses	F16L 55/1286
--	------------------------------

DATE: JANUARY 1, 2019

PROJECT RP0544

F16L 55/17

Replace: The existing Definition statement with the following.

Definition statement

also two half sleeves for covering leaks in pipes from outside the pipe

References

Insert: The following new Informative references section.

Informative references

Attention is drawn to the following places, which may be of interest for search:

Hose-clips for connecting hoses to rigid members	F16L 33/02
--	----------------------------

F16L 55/24

References

Delete: The entire Limiting references section.

Insert: The following new Informative references section.

Informative references

Attention is drawn to the following places, which may be of interest for search:

Preventing accumulation in pneumatic conveyors	B65G 53/521
Cleaning of pipes	B08B

F16L 55/26

Replace: The existing Definition statement with the following.

Definition statement

General features of pigs or moles for use in pipes or pipe systems

Insert: The following new section Relationships with other classification places.

Relationships with other classification places

Special adaptations of pigs or moles for the use in pipes or pipe systems as defined in Note 1. are classified only in the corresponding place of the Note.

General features of pigs or moles, e.g. propulsion means, not specially adapted to the use in pipes or pipe systems as defined in Note 1. are classified in [F16L 55/26](#) and subgroups.

References

Delete: The entire Limiting references section.

Insert: The following new Informative references section.

Informative references

Attention is drawn to the following places, which may be of interest for search:

Tunnel railway systems	B61B 13/10
Conveying articles through pipes or tubes, e.g. tube mail systems	B65G 1/00

DATE: JANUARY 1, 2019

PROJECT RP0544

F16L 57/06**References**Insert: The following new Limiting references section.**Limiting references***This place does not cover:*

Protection against fire or sources of extreme heat	F16L 57/04
--	------------

Replace: The existing Informative references table with the following.**Informative references***Attention is drawn to the following places, which may be of interest for search:*

Wear protection of pipes conveying material in bulk, e.g. concrete	B65G 53/523
--	-------------

F16L 58/00**References**Delete: The following reference from the Limiting references table.**Limiting references***This place does not cover:*

Cathodic corrosion protection	C25F
-------------------------------	------

Add: The follow new reference to the Informative references table.**Informative references***Attention is drawn to the following places, which may be of interest for search:*

Cathodic corrosion protection	C25F
-------------------------------	------