

EUROPEAN PATENT OFFICE
U.S. PATENT AND TRADEMARK OFFICE

CPC NOTICE OF CHANGES 1122

DATE: AUGUST 1, 2021

PROJECT RP0686

The following classification changes will be effected by this Notice of Changes:

<u>Action</u>	<u>Subclass</u>	<u>Group(s)</u>
SCHEME:		
Symbols Deleted:	B60C	2007/107, 2007/146
Symbols New:	B60C	7/101, 7/1015, 7/107, 7/121, 7/146
Titles Changed:	B60C	Subclass
	B60C	3/06, 7/105, 9/1835, 11/246, 13/003, 15/0236, 15/0603
Indents Changed:	B60C	5/10
Warnings New:	B60C	5/002, 7/10, 7/101, 7/1015, 7/102, 7/105, 7/12, 7/121, 7/125, 17/065
DEFINITIONS:		
Definitions New:	B60C	3/02, 3/04, 3/06, 5/04, 5/08, 5/10, 7/101, 7/121, 9/1835, 11/246, 13/003, 15/0236, 15/0603
Definitions Modified:	B60B	1/00, 9/00
Definitions Modified:	B60C	3/00, 3/08, 7/00, 7/10, 7/12

No other subclasses/groups are impacted by this Notice of Changes.

This Notice of Changes includes the following [Check the ones included]:

1. CLASSIFICATION SCHEME CHANGES

- A. New, Modified or Deleted Group(s)
- B. New, Modified or Deleted Warning(s)
- C. New, Modified or Deleted Note(s)
- D. New, Modified or Deleted Guidance Heading(s)

2. DEFINITIONS

- A. New or Modified Definitions (Full definition template)
- B. Modified or Deleted Definitions (Definitions Quick Fix)

3. REVISION CONCORDANCE LIST (RCL)

4. CHANGES TO THE CPC-TO-IPC CONCORDANCE LIST (CICL)

5. CHANGES TO THE CROSS-REFERENCE LIST (CRL)

CPC NOTICE OF CHANGES 1122

DATE: AUGUST 1, 2021

PROJECT RP0686

1. CLASSIFICATION SCHEME CHANGES

A. New, Modified or Deleted Group(s)

SUBCLASS B60C - VEHICLE TYRES; TYRE INFLATION; TYRE CHANGING OR REPAIRING; REPAIRING, OR CONNECTING VALVES TO, INFLATABLE ELASTIC BODIES IN GENERAL; DEVICES OR ARRANGEMENTS RELATED TO TYRES

<u>Type*</u>	<u>Symbol</u>	<u>Indent Level Number of dots (e.g. 0, 1, 2)</u>	<u>Title</u> <u>“CPC only” text should normally be enclosed in {curly brackets}**</u>	<u>Transferred to[#]</u>
M	B60C	Subclass	VEHICLE TYRES; TYRE INFLATION; TYRE CHANGING; CONNECTING VALVES TO INFLATABLE ELASTIC BODIES IN GENERAL; DEVICES OR ARRANGEMENTS RELATED TO TYRES	
M	B60C 3/06	1	asymmetric	
C	B60C 5/002	1	{filled at least partially with foam material}	B60C 5/002, B60C 7/101, B60C 7/1015, B60C 7/121
M	B60C 5/10	1	formed as a single discontinuous ring with contiguous ends which may be connected together	
C	B60C 7/10	1	characterised by means for increasing resiliency	B60C 7/10, B60C 7/101, B60C 7/121
N	B60C 7/101	2	{Tyre casings enclosing a distinct core, e.g. foam (enclosed chambers defined by a distinct core B60C7/121)}	
N	B60C 7/1015	3	{using foam material}	
C	B60C 7/102	2	{Tyres built-up with separate rubber parts}	B60C 7/102, B60C 7/101, B60C 7/121
C	B60C 7/105	2	{using foam material (B60C7/1015 takes precedence)}	B60C 7/105, B60C 7/1015
N	B60C 7/107	2	{comprising lateral openings}	
D	B60C 2007/107	2	{comprising lateral openings}	<administrative transfer to B60C 7/107 INV>
C	B60C 7/12	2	using enclosed chambers, e.g. gas-filled	B60C 7/12, B60C 7/101, B60C7/121
N	B60C 7/121	3	{enclosed chambers defined by a distinct core}	

CPC NOTICE OF CHANGES 1122

DATE: AUGUST 1, 2021

PROJECT RP0686

<u>Type*</u>	<u>Symbol</u>	<u>Indent Level Number of dots (e.g. 0, 1, 2)</u>	<u>Title</u> <u>“CPC only” text should normally be enclosed in curly brackets</u> **	<u>Transferred to#</u>
C	B60C 7/125	3	{enclosed chambers defined between rim and tread }	B60C 7/125, B60C 7/101, B60C 7/121
U	B60C 7/143	3	{having a lateral extension disposed in a plane parallel to the wheel axis }	
N	B60C 7/146	3	{extending substantially radially, e.g. like spokes }	
D	B60C 2007/146	3	{extending substantially radially, e.g. like spokes }	<administrative transfer to B60C 7/146 INV>
M	B60C 9/1835	2	{Rubber strips or cushions at the belt edges }	
M	B60C 11/246	2	{Tread wear monitoring systems }	
M	B60C 13/003	1	{characterised by sidewall curvature }	
M	B60C 15/0236	2	{Asymmetric bead seats, e.g. different bead diameter or inclination angle (asymmetric transverse section B60C 3/06)}	
M	B60C 15/0603	2	{characterised by features of the bead filler or apex }	
C	B60C 17/065	3	{made-up of foam inserts (tyres filled with foam B60C 5/002)}	B60C 17/065, B60C 7/101

*N = new entries where reclassification into entries is involved; C = entries with modified file scope where reclassification of documents from the entries is involved; Q = new entries which are firstly populated with documents via administrative transfers from deleted (D) entries. Afterwards, the transferred documents into the Q entry will either stay or be moved to more appropriate entries, as determined by intellectual reclassification; T = existing entries with enlarged file scope, which receive documents from C or D entries, e.g. when a limiting reference is removed from the entry title; M = entries with no change to the file scope (no reclassification); D = deleted entries; F = frozen entries will be deleted once reclassification of documents from the entries is completed; U = entries that are unchanged.

NOTES:

- **No {curly brackets} are used for titles in CPC only subclasses, e.g. C12Y, A23Y; 2000 series symbol titles of groups found at the end of schemes (orthogonal codes); or the Y section titles. The {curly brackets} are used for 2000 series symbol titles found interspersed throughout the main trunk schemes (breakdown codes).
- U groups: it is obligatory to display the required “anchor” symbol (U group), i.e. the entry immediately preceding a new group or an array of new groups to be created (in case new groups are not clearly subgroups of C-type groups). Always include the symbol, indent level and title of the U group in the table above.
- All entry types should be included in the scheme changes table above for better understanding of the overall scheme change picture. Symbol, indent level, and title are required for all types.
- “Transferred to” column must be completed for all C, D, F, and Q type entries. F groups will be deleted once reclassification is completed.
- When multiple symbols are included in the “Transferred to” column, avoid using ranges of symbols in order to be as precise as possible.
- For administrative transfer of documents, the following text should be used: “<administrative transfer to XX>”, “<administrative transfer to XX and YY simultaneously>”, or “<administrative transfer to XX, YY, ...and ZZ simultaneously>” when administrative transfer of the same documents is to more than one place.
- Administrative transfer to main trunk groups is assumed to be the source allocation type, unless otherwise indicated.
- Administrative transfer to 2000/Y series groups is assumed to be “additional information”.

CPC NOTICE OF CHANGES 1122

DATE: AUGUST 1, 2021

PROJECT RP0686

- If needed, instructions for allocation type should be indicated within the angle brackets using the abbreviations “ADD” or “INV”: <administrative transfer to XX ADD> , <administrative transfer to XX INV>, or < administrative transfer to XX ADD, YY INV, ... and ZZ ADD simultaneously>.
- In certain situations, the “D” entries of 2000-series or Y-series groups may not require a destination (“T transferred to”) symbol, however it is required to specify “<no transfer>” in the “T transferred to” column for such cases.
- For finalisation projects, the deleted “F” symbols should have <no transfer> in the “T transferred to” column.
- For more details about the types of scheme change, see CPC Guide.

CPC NOTICE OF CHANGES 1122

DATE: AUGUST 1, 2021

PROJECT RP0686

B. New, Modified or Deleted Warning(s)

SUBCLASS B60C - VEHICLE TYRES; TYRE INFLATION; TYRE CHANGING OR REPAIRING; REPAIRING, OR CONNECTING VALVES TO, INFLATABLE ELASTIC BODIES IN GENERAL; DEVICES OR ARRANGEMENTS RELATED TO TYRES

<u>Type*</u>	<u>Location</u>	<u>Old Warning</u>	<u>New/Modified Warning</u>
N	B60C 5/002		Group B60C 5/002 is impacted by reclassification into groups B60C 7/101, B60C 7/1015 and B60C 7/121. Groups B60C 5/002, B60C 7/101, B60C 7/1015 and B60C 7/121 should be considered in order to perform a complete search.
N	B60C 7/10		Group B60C 7/10 is impacted by reclassification into groups B60C 7/101 and B60C 7/121. Groups B60C 7/10, B60C 7/101 and B60C 7/121 should be considered in order to perform a complete search.
N	B60C 7/101		Group B60C 7/101 is incomplete pending reclassification of documents from groups B60C 5/002, B60C 7/10, B60C 7/102, B60C 7/12, B60C 7/125 and B60C 17/065. All groups listed in this Warning should be considered in order to perform a complete search.
N	B60C 7/1015		Group B60C 7/1015 is incomplete pending reclassification of documents from groups B60C 5/002 and B60C 7/105. Groups B60C 5/002, B60C 7/105 and B60C 7/1015 should be considered in order to perform a complete search.
N	B60C 7/102		Group B60C 7/102 is impacted by reclassification into groups B60C 7/101 and B60C 7/121. Groups B60C 7/102, B60C 7/101 and B60C 7/121 should be considered in order to perform a complete search.
N	B60C 7/105		Group B60C 7/105 is impacted by reclassification into group B60C 7/1015. Groups B60C 7/105 and B60C 7/1015 should be considered in order to perform a complete search.
N	B60C 7/12		Group B60C 7/12 is impacted by reclassification into groups B60C 7/101 and B60C 7/121. Groups B60C 7/12, B60C 7/101 and

CPC NOTICE OF CHANGES 1122

DATE: AUGUST 1, 2021

PROJECT RP0686

<u>Type*</u>	<u>Location</u>	<u>Old Warning</u>	<u>New/Modified Warning</u>
			B60C 7/121 should be considered in order to perform a complete search.
N	B60C 7/121		Group B60C 7/121 is incomplete pending reclassification of documents from groups B60C 5/002, B60C 7/10, B60C 7/102, B60C 7/12 and B60C 7/125. All groups listed in this Warning should be considered in order to perform a complete search.
N	B60C 7/125		Group B60C 7/125 is impacted by reclassification into groups B60C 7/101 and B60C 7/121. Groups B60C 7/125, B60C 7/101 and B60C 7/121 should be considered in order to perform a complete search.
N	B60C 17/065		Group B60C 17/065 is impacted by reclassification into group B60C 7/101. Groups B60C 17/065 and B60C 7/101 should be considered in order to perform a complete search.

*N = new warning, M = modified warning, D = deleted warning

NOTE: The "Location" column only requires the symbol PRIOR to the location of the warning. No further directions such as "before" or "after" are required.

DATE: AUGUST 1, 2021

PROJECT RP0686

2. A. DEFINITIONS (new)

Insert: The following new Definitions.

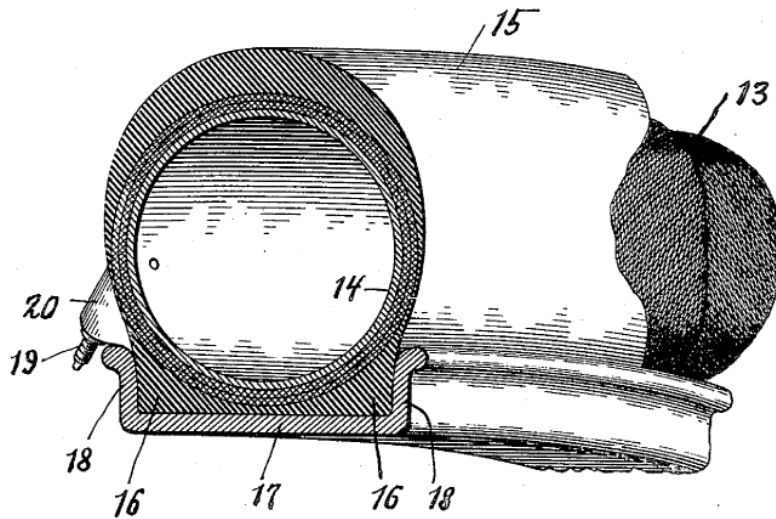
B60C 3/02

Definition statement

This place covers:

Subject matter under main group B60C 3/00 wherein a cross-section defined by a plane passing through the rotation axis of the tyre defines a continuous, circular-type configuration.

Example:



References

Informative references

Attention is drawn to the following places, which may be of interest for search:

Securing tyres without beads; Securing closed torus or tubular tyres	B60C 15/0233
Tyres with openings closeable by means other than the rim; Closing means therefor	B60C 19/04

DATE: AUGUST 1, 2021

PROJECT RP0686

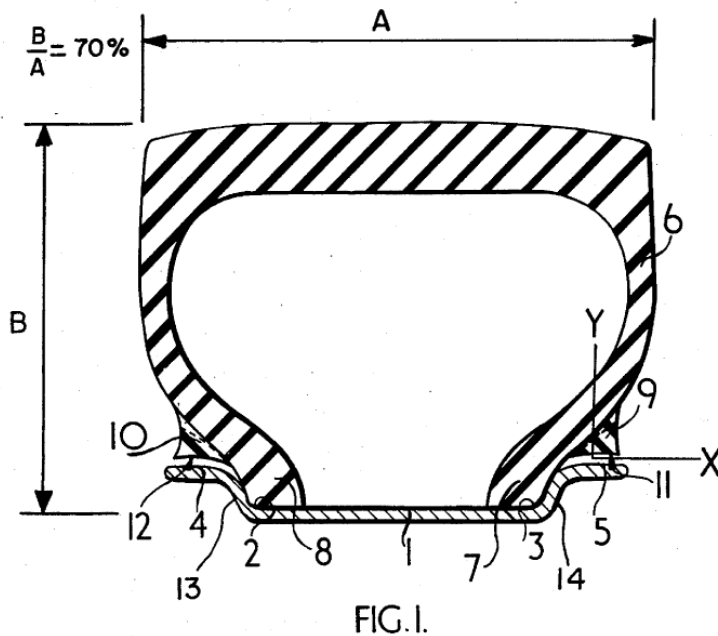
B60C 3/04

Definition statement

This place covers:

Subject matter under main group B60C 3/00 wherein the tyre is characterised by the relative dimensions of the section, e.g., section width, section height, and/or aspect ratio.

Example:



References

Limiting references

This place does not cover:

Tyre cross-section asymmetric about equatorial plane	B60C 3/06
--	---------------------------

B60C 3/06

Definition statement

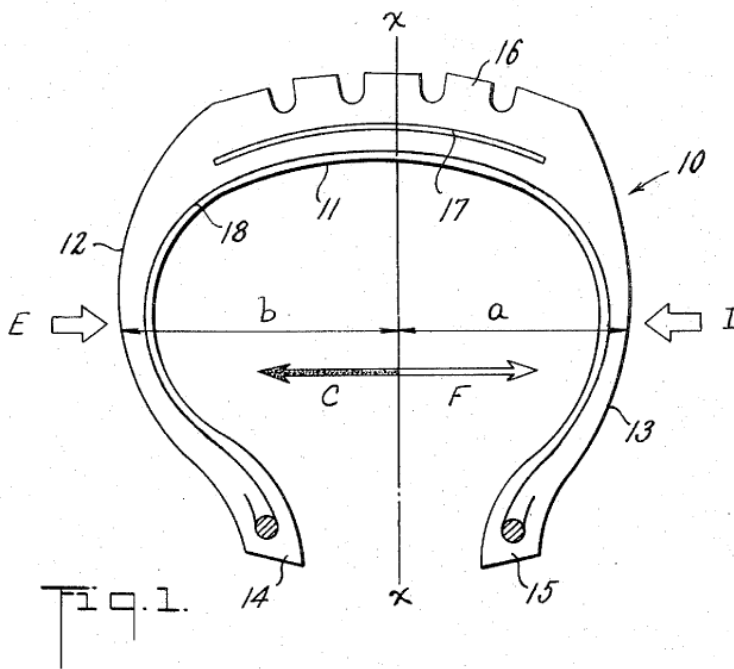
DATE: AUGUST 1, 2021

PROJECT RP0686

This place covers:

Subject matter under main group B60C 3/00 wherein the section does not have a plane longitudinally bisecting the section into mirror image halves, i.e. tyre equatorial plane or midcircumferential plane.

Example:



References

Informative references

Attention is drawn to the following places, which may be of interest for search:

Asymmetric carcasses	B60C 9/17
Asymmetric belts	B60C 9/30
Asymmetric caps and base treads	B60C 11/0066
Asymmetric tread patterns	B60C 11/0304
Asymmetric bead seats	B60C 15/0236
Asymmetric bead reinforcement	B60C 2015/0696
Tyres requiring asymmetric or special mounting	B60C 19/001

DATE: AUGUST 1, 2021

PROJECT RP0686

B60C 5/04

Definition statement

This place covers:

Subject matter wherein the inflatable insert is defined by a special shape or construction.

References

Limiting references

This place does not cover:

Inflatable pneumatic tyres or inner tubes formed as a single discontinuous ring with contiguous ends which may be connected together	B60C 5/10
--	---------------------------

B60C 5/08

Definition statement

This place covers:

Subject matter wherein the inner tube is strengthened throughout at least a portion of its extent.

B60C 5/10

Definition statement

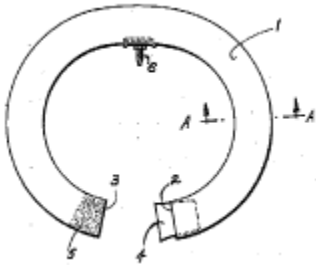
This place covers:

Subject matter wherein the pneumatic tyre forms a discontinuous ring, the ends of which may connect together, overlap, or abut.

Example 1:

DATE: AUGUST 1, 2021

PROJECT RP0686



Example 2:



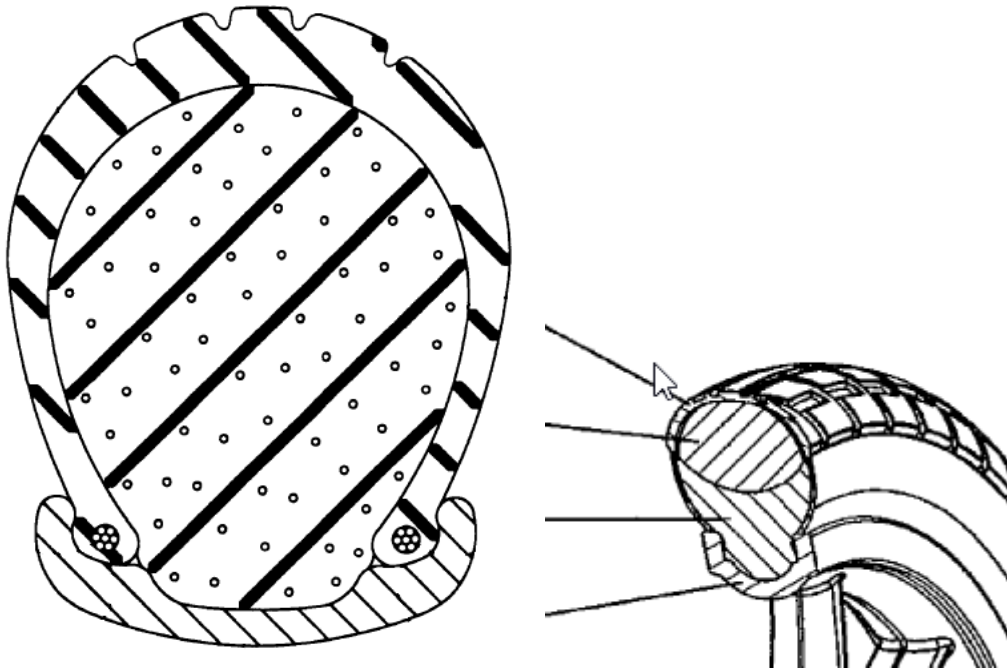
B60C 7/101

Definition statement

This place covers:

Subject matter wherein the tyre consists of a casing enclosing a core where the core may be separate or integral with the casing. The core and casing must be distinct by reason of differing materials or arrangement.

Example:



References

Limiting references

This place does not cover:

Tyre casing enclosing a distinct core where the core has chambers therein	B60C 7/121
---	----------------------------

Informative references

Attention is drawn to the following places, which may be of interest for search:

Pneumatic tyre at least partially filled with foam material	B60C 5/002
Tyres comprising resilient foam means which become load supporting in deflated or damaged condition	B60C 17/065

B60C 7/121

Definition statement

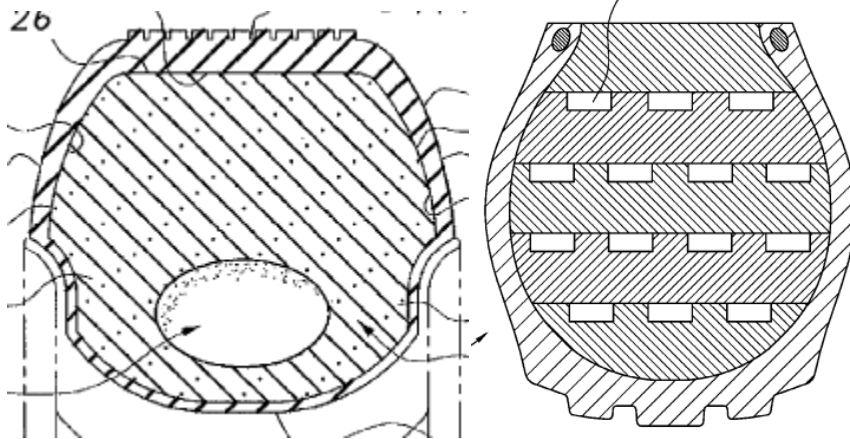
DATE: AUGUST 1, 2021

PROJECT RP0686

This place covers:

Subject matter wherein the tyre consists of a casing enclosing a core where the core may be separate or integral with the casing. The core and casing must be distinct by reason of differing materials or arrangement and include chambers within the core.

Example:



B60C 9/1835

Informative references

Attention is drawn to the following places, which may be of interest for search:

Compositions	B60C 2001/0075
--------------	-------------------

B60C 11/246

Informative references

Attention is drawn to the following places, which may be of interest for search:

Tyre pressure monitoring	B60C 23/04
--------------------------	------------

DATE: AUGUST 1, 2021

PROJECT RP0686

B60C 13/003

Informative references

Attention is drawn to the following places, which may be of interest for search:

Carcass ply curvature	B60C 9/0292
-----------------------	-----------------------------

B60C 15/0236

Limiting references

This place does not cover:

Asymmetric transverse section	B60C 3/06
-------------------------------	---------------------------

Informative references

Attention is drawn to the following places, which may be of interest for search:

Asymmetric bead reinforcement	B60C 2015/0696
-------------------------------	------------------------------------

B60C 15/0603

Informative references

Attention is drawn to the following places, which may be of interest for search:

Compositions of the apex rubber	B60C 2001/0058
---------------------------------	------------------------------------

DATE: AUGUST 1, 2021

PROJECT RP0686

2. A. DEFINITIONS (modified)

B60B 1/00

Replace: The existing Informative references table with the following updated table.

Informative references

Attention is drawn to the following places, which may be of interest for search:

Production of spoke wheels	B21D 53/268
Non-inflatable or solid tyre characterised by means for increasing resiliency	B60C 7/10

B60B 9/00

Replace: The existing Informative references table with the following updated table.

Informative references

Attention is drawn to the following places, which may be of interest for search:

Non-inflatable or solid tyre characterised by means for increasing resiliency	B60C 7/10
---	---------------------------

B60C 3/00

Insert: The following new Definition statement and images.

Definition statement

This place covers:

Tyres distinguished by a mathematical relationship, e.g. equation or ratio, or an absolute dimension, e.g. radius of curvature, which mathematical relationship or absolute dimension describes the cross-sectional profile or cross-sectional shape of the tyre.

Example 1:

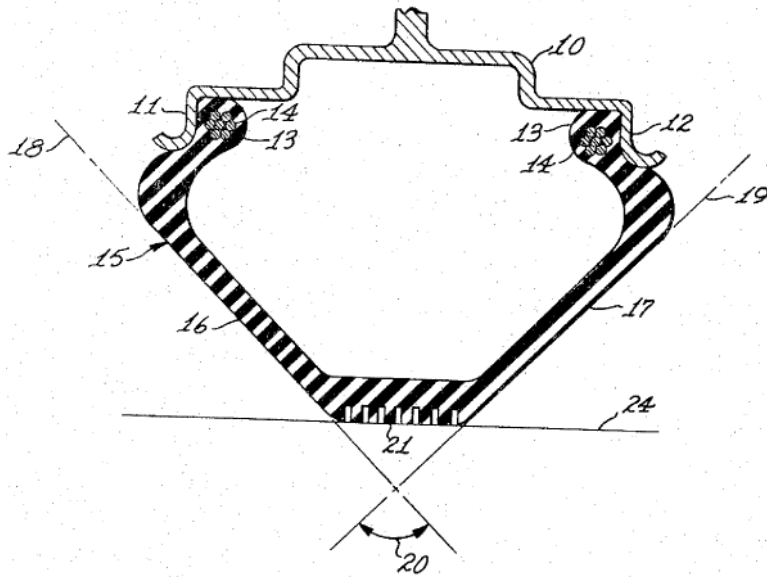
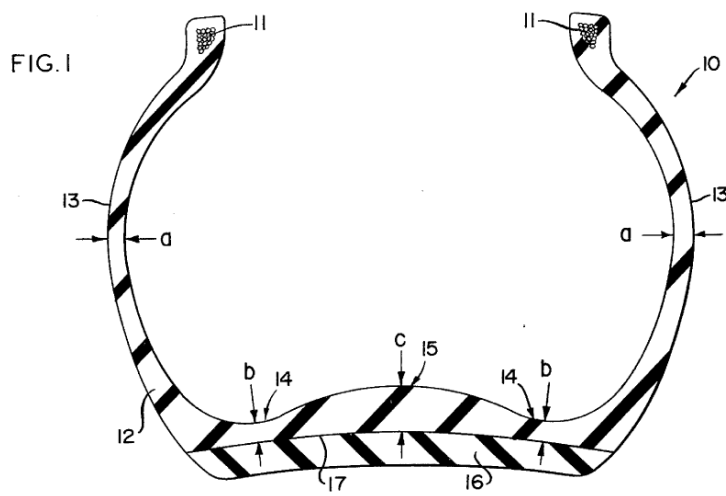


FIG. 1

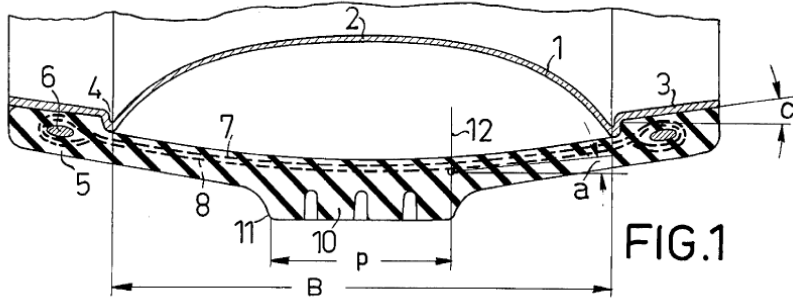
Example 2:



Example 3:

DATE: AUGUST 1, 2021

PROJECT RP0686



References

Informative references

Attention is drawn to the following places, which may be of interest for search:

Replace: The existing Informative references table with the following updated table.

Wheels characterized by rail-engaging elements and having non-elastic tyres	B60B 17/0055
Wheels characterized by rail-engaging elements and having elastic tyres,	B60B17/02

Insert: The following new Special rules of classification section.

Special rules of classification

Documents which nominally fit within [B60C 3/00](#) but otherwise fit in any of the areas listed below should be classified in the appropriate area listed below:

Tyres whose transverse section is characterised only by carcass ply curvature	B60C 9/0292
Tyres whose transverse section is characterised only by tyre tread radius of curvature	B60C 11/0083
Tyres whose transverse section is characterised only by shape of the shoulders between tread and sidewall	B60C 11/01
Tyres whose transverse section is characterised only by sidewall radius of curvature	B60C 13/003

Tyres whose transverse section is characterised only by arrangement of sidewall grooves or ribs	B60C 13/02
Tyres whose transverse section is characterised only by shape of the tyre bead contour	B60C 15/024

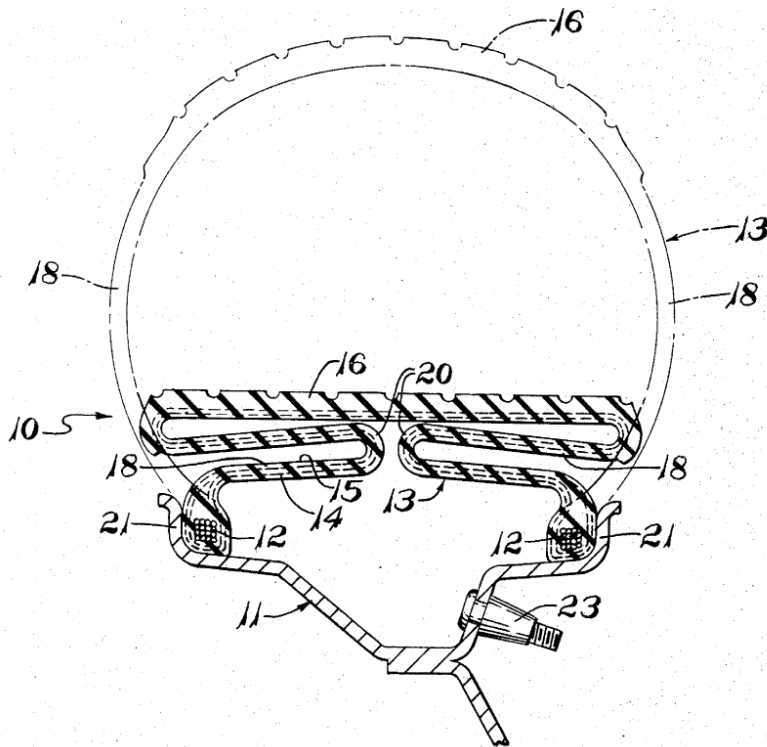
B60C 3/08

Insert: The following new Definition statement and image.

Definition statement

This place covers:

Example illustrating storage condition vs. inflated condition of a spare tyre:



B60C 7/00

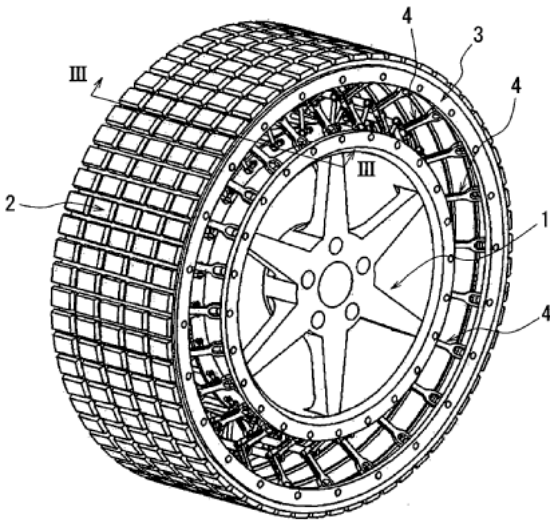
Insert: The following new Definition statement and image.

Definition statement

This place covers:

- non-inflatable tires of the solid rubber tyre type (e.g. sectional, casing enclosed core, integral) whether or not they include voids such as chamber openings
- non-inflatable tires made up of a tread band supported by a plurality of springs or spokes
- means for securing non-inflatable tyres to rims

Example:



DATE: AUGUST 1, 2021

PROJECT RP0686

References

Informative references

Attention is drawn to the following places, which may be of interest for search:

Insert: The following new reference in the Informative references table.

Castor wheels	B60B 33/00
---------------	------------

Insert: The following new Special rules of classification section.

Special rules of classification

The precedential classification within [B60C 1/00](#) should be given if the subject matter cannot to be classified within any subgroup of [B60C 7/00](#). For example, disclosure which is related to the chemical composition of the tread but also discloses a solid tyre using foam material should be classified in both [B60C 1/0016](#) as well as [B60C 7/105](#).

B60C 7/10

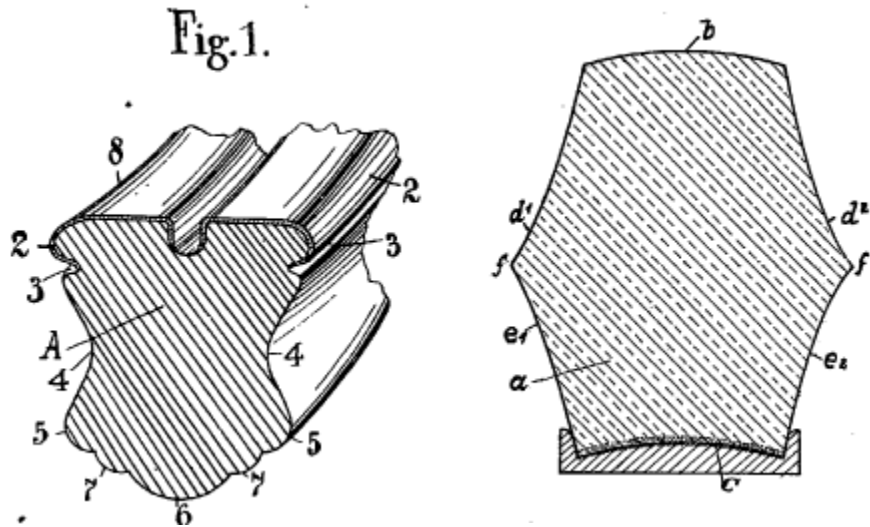
Insert: The following new Definition statement and images.

Definition statement

This place covers:

Subject matter wherein there is provided means for absorbing road shocks other than the use of a pneumatic means (e.g. non-inflatable or solid tyre having a particular structure and/or composition).

Examples:



B60C 7/12

Insert: The following new Definition statement.

Definition statement

This place covers:

Subject matter where the tyres use enclosed chambers where the chambers are effectively empty, i.e. not filled with a solid material.

CPC NOTICE OF CHANGES 1122

DATE: AUGUST 1, 2021

PROJECT RP0686

3. REVISION CONCORDANCE LIST (RCL)

Type*	From CPC Symbol (existing)	To CPC Symbol(s)
C	B60C 5/002	B60C 5/002, B60C 7/101, B60C 7/1015, B60C 7/121
C	B60C 7/10	B60C 7/10, B60C 7/101, B60C 7/121
C	B60C 7/102	B60C 7/102, B60C 7/101, B60C 7/121
C	B60C 7/105	B60C 7/105, B60C 7/1015
D	B60C 2007/107	<administrative transfer to B60C 7/107 INV>
C	B60C 7/12	B60C 7/12, B60C 7/101, B60C 7/121
C	B60C 7/125	B60C 7/125, B60C 7/101, B60C 7/121
D	B60C 2007/146	<administrative transfer to B60C 7/146 INV>
C	B60C 17/065	B60C 17/065, B60C 7/101

* C = entries with modified file scope where reclassification of documents from the entries is involved; Q = new entries which are firstly populated with documents via administrative transfers from deleted (D) entries. Afterwards, the transferred documents into the Q entry will either stay or be moved to more appropriate entries, as determined by intellectual reclassification; D = deleted entries; F = frozen entries will be deleted once reclassification of documents from the entries is completed.

NOTES:

- Only C, D, F, and Q type entries are included in the table above.
- When multiple symbols are included in the “To” column, do not use ranges of symbols.
- For administrative transfer of documents, the following text should be used: “< administrative transfer to XX>”, “<administrative transfer to XX and YY simultaneously>”, or “<administrative transfer to XX, YY, ...and ZZ simultaneously>” when administrative transfer of the same documents is to more than one place.
- Administrative transfer to main trunk groups is assumed to be the source allocation type, unless otherwise indicated.
- Administrative transfer to 2000/Y series groups is assumed to be “additional information”.
- If needed, instructions for allocation type should be indicated within the angle brackets using the abbreviations “ADD” or “INV”: <administrative transfer to XX ADD>, <administrative transfer to XX INV>, or < administrative transfer to XX ADD, YY INV, ... and ZZ ADD simultaneously>.
- In certain situations, the “D” entries of 2000-series or Y-series groups may not require a destination (“To”) symbol, however it is required to specify “<no transfer>” in the “To” column for such cases.
- RCL is not needed for finalisation projects.

CPC NOTICE OF CHANGES 1122

DATE: AUGUST 1, 2021

PROJECT RP0686

4. CHANGES TO THE CPC-TO-IPC CONCORDANCE LIST (CICL)

<u>CPC</u>	<u>IPC</u>	<u>Action*</u>
B60C 7/101	B60C 7/10	New
B60C 7/1015	B60C 7/10	New
B60C 7/107	B60C 7/10	New
B60C 2007/107		Delete
B60C 7/121	B60C 7/12	New
B60C 7/146	B60C 7/14	New
B60C 2007/146		Delete

*Action column:

- For an (N) or (Q) entry, provide an IPC symbol and complete the Action column with “NEW.”
- For an existing CPC main trunk entry or indexing entry where the existing IPC symbol needs to be changed, provide an updated IPC symbol and complete the Action column with “UPDATED.”
- For a (D) CPC entry or indexing entry complete the Action column with “DELETE.” IPC symbol does not need to be included in the IPC column.
- For an (N) 2000 series CPC entry which is positioned within the main trunk scheme (breakdown code) provide an IPC symbol and complete the action column with “NEW”.
- For an (N) 2000 series CPC entry positioned at the end of the CPC scheme (orthogonal code), with no IPC equivalent, complete the IPC column with “CPCONLY” and complete the action column with “NEW”.

NOTES:

- F symbols are not included in the CICL table above.
- T and M symbols are not included in the CICL table above unless a change to the existing IPC is desired.